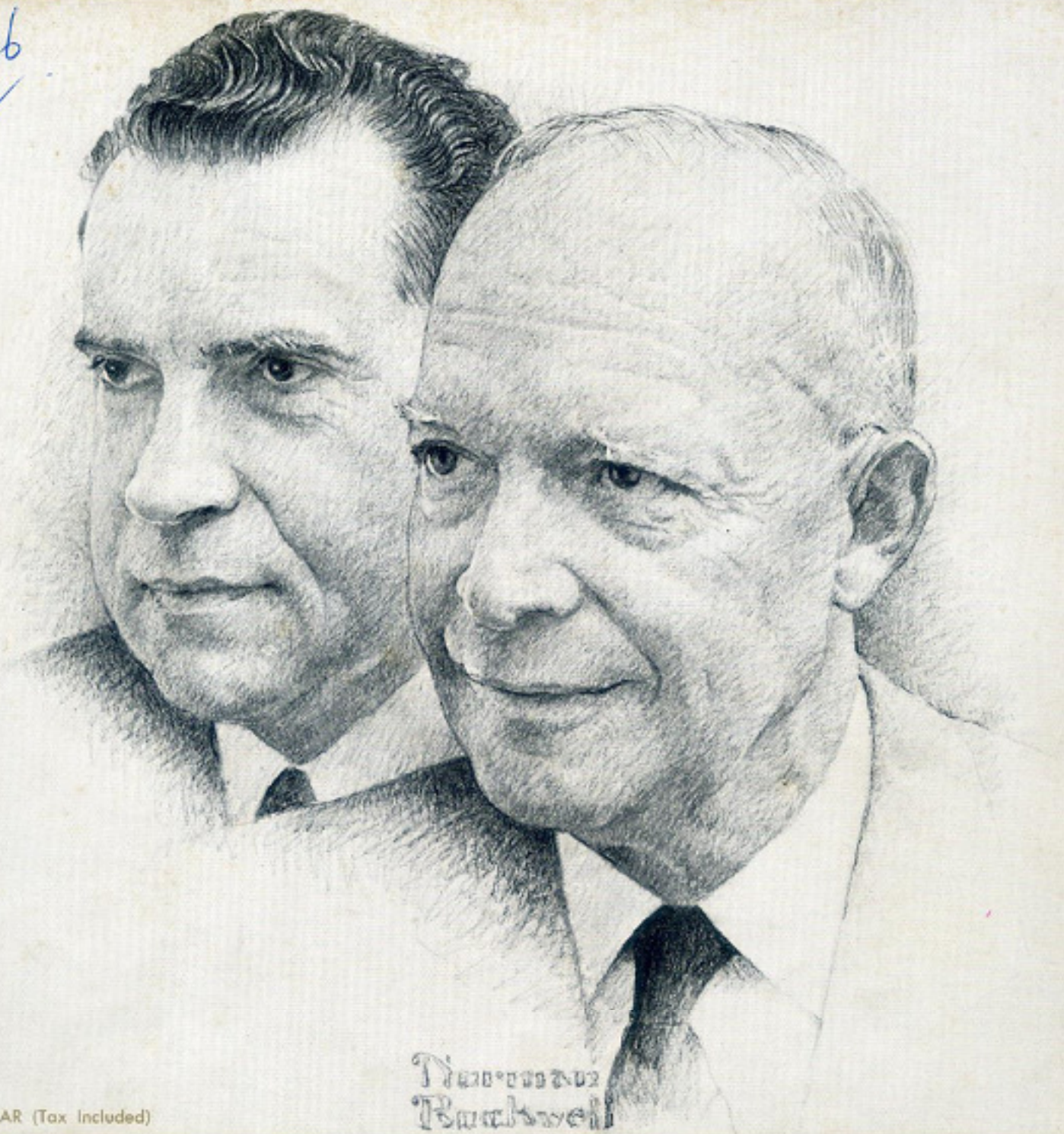


46



Norman
Backwell

ONE DOLLAR (Tax Included)

Official Program
43rd INAUGURATION
1957



The drawing of President Eisenhower and Vice President Nixon on the cover is from an original sketch, graciously donated to the 1957 Inaugural Committee by Norman Rockwell, one of America's foremost artists. Mr. Rockwell's series depicting the Four Freedoms are world renowned; and his Saturday Evening Post cover paintings have won him wide recognition for his warm portrayals of the contemporary American scene.



Copyright 1957

INAUGURAL COMMITTEE 1957

Liberty Loan Building, 14th and D Streets S.W.
Washington, D. C.



Official Program
43rd Inauguration
1957

INDUCTING INTO OFFICE

Dwight D. Eisenhower
PRESIDENT OF THE UNITED STATES

Richard M. Nixon
VICE PRESIDENT OF THE UNITED STATES



★ Contents ★

★ Greetings to Visitors.....	3	★
★ Program of Inaugural Events.....	4	★
★ Program of Inaugural Ceremonies.....	5	★
★ The Joint Congressional Inaugural Committee.....	6	★
★ Officers of the 1957 Inaugural Committee.....	7	★
★ Dwight D. Eisenhower, Photo and Biographical Sketch.....	8, 9	★
★ Richard M. Nixon, Photo and Biographical Sketch.....	10, 11	★
★ Herbert Hoover, Photo and Biographical Sketch.....	12, 13	★
★ George Washington, Photo and Biographical Sketch.....	14	★
★ Abraham Lincoln, Photo and Biographical Sketch.....	15	★
★ Mrs. Dwight D. Eisenhower.....	16	★
★ Mrs. Richard M. Nixon.....	17	★
★ The Eisenhower Family.....	18	★
★ The Nixon Family.....	19	★
★ The 1956 Inaugural Parade.....	20-23	★
★ The Inaugural Ball, Past and Present.....	24, 25	★
★ The First Four Years, Eisenhower-Nixon Administration.....	26-30	★
★ Past Presidents of the United States.....	31-34	★
★ The Nation's Capital.....	35-38	★
★ Roster of the 1957 Inaugural Committee.....	39-48	★
★ The 1957 Inaugural Medal.....	Inside Back Cover	★





Greetings to Visitors

WELCOME TO WASHINGTON, our Nation's Capital.

On behalf of the Inaugural Committee of 1957, I extend warmest greetings to all participating in this historic event, either in person or by radio and television.

The theme of this 43rd Inaugural, "Consent of the Governed," comes from a portion of the Declaration of Independence that will live forever:

"We hold these truths to be self-evident, that all men are created equal, that they are endowed by their Creator with certain unalienable Rights, that among these are Life, Liberty and the Pursuit of Happiness. That to secure these rights, Governments are instituted among Men, deriving their just powers from the consent of the governed."

Seldom in our history has the "Consent of the Governed" been given so clearly as it was three months ago. The American people resoundingly chose to continue the leadership of President Dwight D. Eisenhower and Vice President Richard M. Nixon.

This Inaugural climaxes again, as it did four years ago, the crusade which started with a homecoming speech in which President Eisenhower asked Americans everywhere to share his conviction: "I believe we can have peace with honor, reasonable security with national solvency. I believe in the future of the United States of America."

The people of America have re-affirmed their conviction in leaders of vigor, integrity and imagination—leaders who are building a better future for each of us, our children and our grandchildren. The promise of an America prosperous and at peace is a reality. We have security with a sound economy. We continue to seek stability among nations abroad, recognizing American leadership as the greatest force for a just peace in the world today.

Our beautiful city has been the setting for many Presidents and Vice Presidents as they travel the traditional inaugural route along Pennsylvania Avenue. But never before have our citizens gathered, as we do in 1957, to confer again the supreme honor and duty of the Presidency upon a man who represents so deeply the simple prayers of people everywhere for lasting world peace.

May these prayers be answered as our chosen leaders dedicate themselves anew to the service of all our citizens.

Robert V. Fleming, Chairman
1957 Inaugural Committee



Program

of INAUGURAL EVENTS

SATURDAY, JANUARY 19

- Afternoon** Reception for Official Distinguished Ladies, Pan American Union, 3 P.M. By invitation only.
- Evening** The Inaugural Festival. Entertainment by celebrities from stage, screen and radio-TV. Uline Arena, 8 P.M. Tickets available to the public.
- Young Republican Reception, Willard Hotel, 5 P.M.-7 P.M. By invitation only.

SUNDAY, JANUARY 20

- Morning** Special Inaugural church services throughout the District of Columbia.
- Afternoon** Reception for Governors and distinguished guests, Statler Hotel ballroom, 3:30 P.M. 6:30 P.M. By invitation only.
- Young Republicans program: "American Dedication to World Peace," Sheraton Park Hotel, 2:30 P.M. Tickets available to the public.
- Evening** Inaugural concert, National Symphony Orchestra, Soloists, Constitution Hall, 8:30 P.M. Tickets available to the public.
- Dinner honoring Nationalities Advisory Committee, Statler Hotel Ballroom, 8 P.M. By Invitation Only.
- (Private swearing-in ceremony for the President and Vice President, White House, will be held during the day.)

MONDAY, JANUARY 21

- Noon** Induction into office of President and Vice President. East Main Steps, United States Capitol. Inaugural address of the President of the United States. Invitations issued by the Joint Congressional Committee.
- Afternoon** Inaugural Parade, 1:30 P.M., Pennsylvania Avenue. Tickets available to the public.
- Evening** Inaugural Balls, 9 P.M.-2 A.M., four locations: National Guard Armory, Sheraton Park Hotel, Statler Hotel, Mayflower Hotel. By invitation only.

OTHER EVENTS OF INTEREST

State Societies: Each State Society has planned a program of events of special interest to visitors from their states during the inaugural period.

Embassy tours: The Official Hostesses and Hospitality Committee is arranging tours of the embassies for visitors to be conducted throughout the three-day period.

Art Galleries will feature special twilight and philharmonic concerts. Included are National Gallery of Art, the Corcoran, the Phillips and Freer Galleries.

JOINT CONGRESSIONAL
Committee
OF THE
UNITED STATES SENATE
AND THE
HOUSE OF REPRESENTATIVES



SENATOR
STYLES BRIDGES
Chairman



SENATOR
THEODORE FRANCIS GREEN



SENATOR
JOHN J. SPARKMAN



HONORABLE
SAM RAYBURN, M.C.



HONORABLE
JOHN W. McCORMACK, M.C.



HONORABLE
JOSEPH W. MARTIN, JR., M.C.



J. MARK TRICE
Secretary



Robert V. Fleming
Chairman



Lewis T. Breuninger
Executive Vice Chairman

OFFICERS OF THE INAUGURAL COMMITTEE



Edward Burling, Jr.
Vice Chairman



Mrs. Howard A. Coffin
Vice Chairman



Clyde D. Garrett
Vice Chairman



George L. Hart, Jr.
Vice Chairman



David B. Karrick
Vice Chairman



Thomas A. Lane
Vice Chairman



Robert McLaughlin
Vice Chairman



Samuel Spencer
Vice Chairman



J. Franklin Wilson
Vice Chairman



James C. Wilkes
General Counsel



Randolph G. Bishop
Executive Secretary



Douglas C. Whitlock
Secretary



John M. Christie
Assistant to the Chairman



Bruce Baird
Treasurer



Daniel W. Bell
Budget Chairman



John A. Reilly
Finance Chairman



Clarence G. Adamy
Executive Assistant



James A. Councilor, Jr.
Comptroller



George Murphy
Director of Entertainment



L. Richard Guylay
Director, Public Relations





DWIGHT D. EISENHOWER

AS DWIGHT D. EISENHOWER begins his second term as President of the United States, history will place him alongside our great Presidents—Lincoln and Washington.

Our 34th President was born in humble surroundings in Denison, Texas. The Eisenhower family moved to Abilene, Kansas where Ike and his five brothers grew up in an atmosphere of a rugged frontier town life in a deeply religious home. All the boys worked after school to help the family's meager income.

After his graduation from West Point in 1915, he met Mamie Geneva Doud, and they were married in 1916. An Army career for the Eisenhowers carried them to a wide variety of assignments and posts. The young officer graduated first in his class from the Army Command General Staff School.

When World War II broke out, Eisenhower moved up rapidly. He commanded the American forces landing in North Africa in 1942, and in December of 1943 became Supreme Commander, Allied Expeditionary Forces. He led the greatest land, sea and air force ever assembled to victory in Europe.

After signing the unconditional surrender in 1945, and serving as Military Governor of the U. S. zone in Germany, General Eisenhower returned to a grateful America to become Chief of Staff.

In 1948 he was appointed President of Columbia University. During this period at Columbia Mr. Eisenhower made the many speeches which so clearly set forth his principles of government.

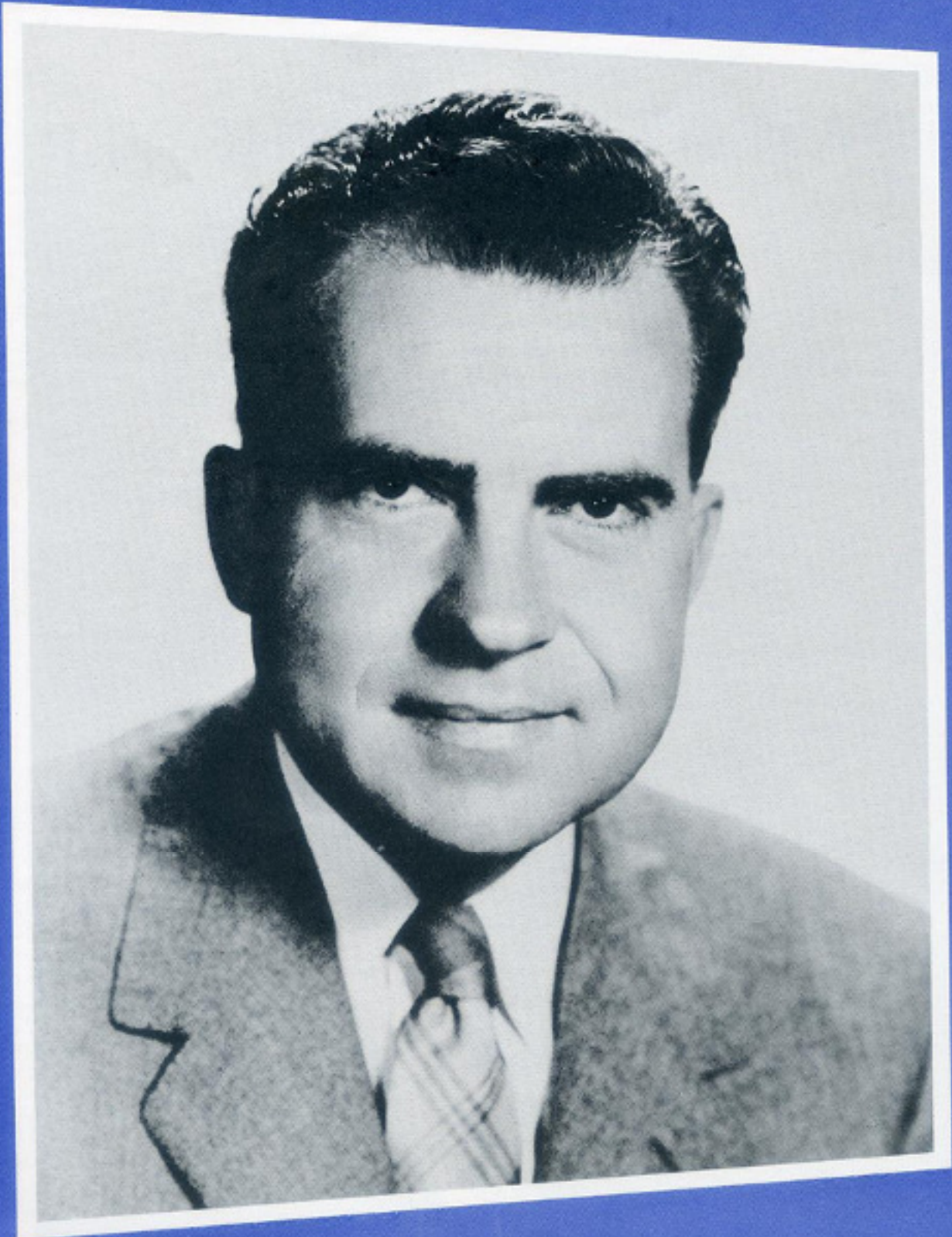
In 1950 he took leave of absence from Columbia to become Supreme Allied Commander in Europe where he further displayed his great abilities for leadership and organization by bringing together many nations into a single force for peace. Again his unique ability to inspire teamwork and assure the success of a common endeavor was demonstrated.

Declaring himself a Republican, Mr. Eisenhower was nominated for President in 1952 and won an overwhelming victory. Four years later the American people re-elected him President by the largest vote in American history and he won the electoral votes of 41 states.

A humble man who places complete faith in the moral and spiritual qualities of people, President Eisenhower restored dignity, leadership and prestige to the White House.

All Americans look forward to four more years of peace, prosperity and progress under this soldier-statesman—a humble, optimistic, God-fearing leader who represents the hopes of people everywhere for lasting world peace.





RICHARD M. NIXON

NO MAN in public life today so typifies the traditional American success story than Richard M. Nixon, our 36th Vice President.

From a young lawyer 10 years ago, to a leader described by President Eisenhower as "the most valuable member of my team," Mr. Nixon has brought real stature to Vice Presidency.

Born in Yorba Linda, California, he learned from his Quaker parents the principles of hard work, thrift and spiritual values. As a youngster, he worked in his family's general store; later working his way through Whittier College and Duke University Law School. His charming wife Pat also came up the hard way. Orphaned early, she worked in hospitals and department stores to put herself through college. The Nixons met in Whittier, California where she was teaching school and were married in 1940. Their first daughter Patricia was born in 1946; and the second, Julie, in 1948.

Mr. Nixon practiced law for five years and after a brief period in government service in Washington joined the Navy. He earned two battle stars during nearly four years of service, including 15 months in the South Pacific.

Elected to Congress in 1946, the young Congressman served with distinction on the Herter Committee studying European recovery. He was re-elected to Congress in 1948—receiving the nominations of both Democrats and Republicans. His voting record, service and outstanding ability led to his election as United States Senator in 1950.

Perhaps the greatest testimony to Mr. Nixon's ability and character was Dwight D. Eisenhower's selection of him as running mate in 1952. Following the Eisenhower-Nixon landslide in the 1952 election, the Vice President has been given precedent-breaking responsibilities. He has presided over Cabinet and National Security Council meetings and plays a major role in forming Eisenhower Administration policies.

Representing the President on two round-the-world trips, Pat and Dick Nixon visited 32 foreign countries, winning countless friends for America.

Although the second youngest man ever elected Vice President, Mr. Nixon is mature in experience, leadership and judgment. President Eisenhower sums up his remarkable career: "Never has there been a Vice President so well versed in the activities of government. Whatever dedication to country, loyalty and patriotism and great ability can do for America, Dick Nixon will do—and that I know."





HERBERT HOOVER

"Above all else, President Eisenhower and his colleagues have sustained two vital forces in the minds of free men. They are integrity and religious faith. No Nation of free men can endure without these pillars of strength. The pursuit of the Holy Grail of Freedom is useless without them."

THE SETTING for the words above was the Centennial Convention of the Republican Party in San Francisco, August 21, 1956.

The speaker was Herbert Hoover, 31st President of the United States, addressing his seventh Republican National Convention. His words were a re-affirmation of his own personal philosophy of freedom, as well as a tribute to the leadership of the Eisenhower-Nixon Administration.

Iowa-born, and orphaned at the age of six, Herbert Hoover has devoted his life to the service of mankind with devotion and one principle as his guide: that government is the servant and never the master of the people. Leaders of our nation have sought his counsel and drawn freely on his ability, vast experience and wisdom.

From 1895 to 1914, Mr. Hoover practiced engineering in 20 countries throughout the world. During World War I, he conducted the relief of people in Belgium and Northern France. He also served as U.S. food administrator during the war: after the armistice he was director general of relief and reconstruction of 250 million people in Europe.

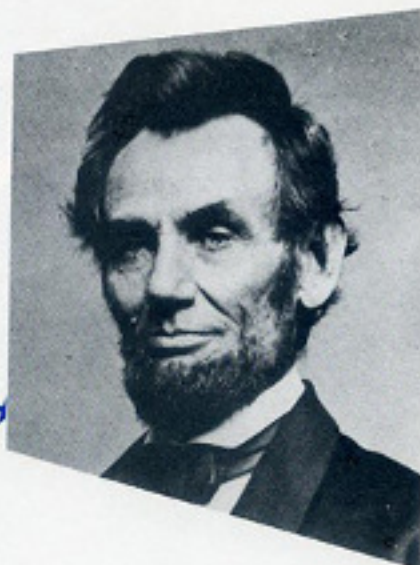
After serving as Secretary of Commerce from 1921 to 1928, he was elected President of the United States from 1929 to 1933. During this 12-year period he had a major part in the public works development of our nation. He was chairman of the Colorado River Commission resulting in Hoover Dam, and chairman of the St. Lawrence Water Commission which authorized the waterway. He set up the Reconstruction Finance Corporation, the Federal Farm Board, the Federal Home Loan Banks, and established the federal relief of unemployed.

Following the second World War, Mr. Hoover served in the relief of 750 million people in the postwar famine in 35 countries. In 1948 he served as Chairman of the first Commission on Reorganization of the Executive Departments of the Government; President Eisenhower appointed him again as chairman of the second commission. Mr. Hoover continued this vital task until June, 1955 when he retired after 42 continuous years of public service in and out of government. The former President served without compensation for himself, and his salary was always returned to the government or used in a good public cause.

Herbert Hoover is revered throughout the world as the symbol of public service in every human field.



ABRAHAM LINCOLN



First Republican President of the United States

ABRAHAM LINCOLN became the 16th President of the United States at a tense, dramatic moment in American history.

War clouds were heavy over Washington on Inauguration Day—March 4, 1861. The streets leading to the Capitol bristled with loaded cannon, and with the rifles of infantrymen and cavalrymen.

It was a solemn, grim-faced Lincoln who took the oath of office from the aged Chief Justice Roger B. Taney on the steps of the still-unfinished Capitol. A multitude of citizens heard him deliver a warning to the South:

"In your hands, my dissatisfied fellow countrymen, and not in mine, is the momentous issue of civil war. The government will not assail you. You can have no conflict without being yourselves the aggressors. You have no oath registered in heaven to destroy the government, while I shall have the most solemn one to 'preserve, protect, and defend' it."

But it was of no avail. A month later, Confederate batteries fired on Fort Sumter, and the war was on. Heartbreaking, backbreaking responsibilities were thrust upon the humble lawyer from Springfield, Illinois, whose philosophy was that "this government cannot endure permanently half-slave and half-free."

The Constitution designated the President as Commander-in-Chief of the Army, and Lincoln accepted this vital role without hesitation. As a result, his enemies blamed him whenever there was a reversal on the battlefield. The Nation, however, had come to recognize the greatness of the man, and he was re-elected on the Republican ticket in 1864, with 212 electoral votes to only 21 for his opponent.

When Lincoln's second Inauguration Day came, the war was almost over, but the heart of the Nation was heavy on March 4, 1865. The fighting had taken an awful toll, and Lincoln's gaunt frame was stooped, and his kindly face was stamped with sadness, as he took the oath before a vast crowd assembled in the Capitol Plaza. His Second Inaugural Address contained the immortal words:

"With malice toward none, with charity for all, with firmness in the right as God gives us to see the right, let us strive on to finish the work we are in, to bind up the nation's wounds, to care for him who shall have borne the battle and for his widow and his orphan, to do all which may achieve and cherish a just and lasting peace among ourselves and with all nations."

A month later—on April 9, 1865—Lee surrendered to Grant at Appomattox, and the war was at an end. But Lincoln was not to lead the Nation to the re-union he had so often prayed for during his fateful days in the White House.

On Good Friday, April 14, only six days after the war ended, John Wilkes Booth shot the President at Ford's Theater, while Mr. and Mrs. Lincoln were attending a performance of "Our American Cousin."

At 7:22 in the morning of April 15, Abraham Lincoln died, and his body was removed to Springfield for burial. The whole Nation mourned the loss of this great and noble man, of whom it was said:

"Now he belongs to the ages."





Mamie

Mrs. Dwight D. Eisenhower





Mrs. Richard M. Nixon

Pat





The Eisenhower Family

THE PRESIDENT and First Lady established their first home in two-room quarters in 1916 at Fort Sam Houston, Texas. Since then they have lived at various Army posts in the United States, France, Panama Canal Zone and the Philippines. The permanent residence of the Eisenhowers is now a farm home at Gettysburg, Pennsylvania where the four grandchildren are frequent visitors. In the 1956 Easter Day photo above, the President and his son, Major John Eisenhower are standing behind Barbara Anne, born at West Point on May 30, 1949; Dwight David 2nd, born at West Point on March 31, 1948; Susan Elaine, born at Fort Knox, Kentucky on December 31, 1951; Mrs. Mamie Eisenhower is holding the youngest grandchild, Mary Jean who was born December 21, 1955 in Washington; and Mrs. John Eisenhower.

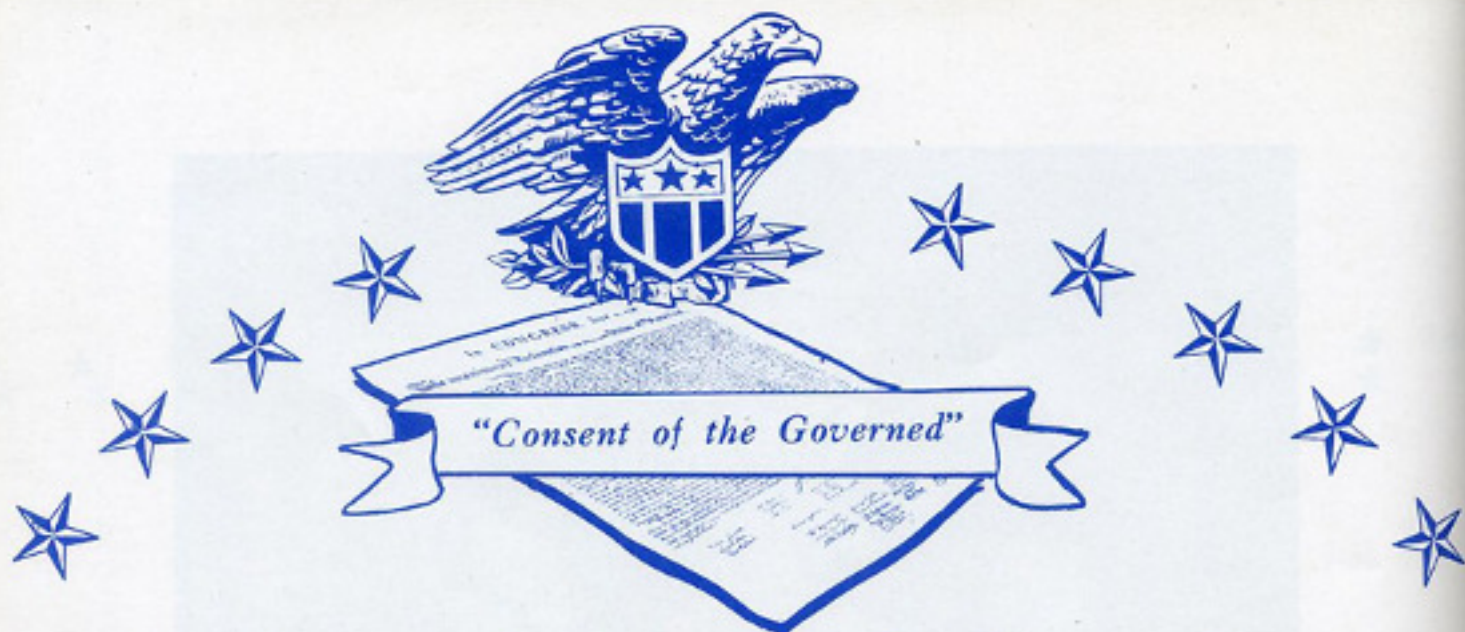




The Nixon Family

VICE PRESIDENT and Mrs. Nixon have been members of Washington's "official family" since January, 1947 when he began his first term as a member of the U. S. House of Representatives. The Nixons first lived in a small apartment across the Potomac River in Alexandria, Virginia; and now reside in the Spring Valley section of Washington. They are frequent visitors in Whittier, California where the Vice President attended college and also practiced law. The Nixons established homes during his naval service in Iowa, Pennsylvania, Maryland, New York City and San Francisco. The photo above was taken during the autumn of 1956 and shows the Vice President and Mrs. Nixon with Patricia, born in Whittier on February 21, 1946; and Julie, born July 5, 1948 in Washington.





The Inaugural Parade



ADM. ARTHUR W. RADFORD,
Grand Marshal



EDWARD R. CARR,
Chairman Inaugural Parade



MAJ. GEN. J. C. VAN HOUTEN,
*Chairman Armed Services
Participation*

The 1957 Inaugural Parade will be an impressive, fast-moving and colorful spectacle, based upon the "Consent of the Governed" theme of the 43rd Inauguration.

The parade will assemble within the area from the west curb of 7th Street S.E., to the east curb of 4th Street S.W. The initial point will be at the intersection of New Jersey and Independence Avenues.

The marchers will cross the Capitol Plaza, turn left into Constitution Avenue, then swing along Pennsylvania Avenue to 15th Street N.W. The parade will turn north on 15th Street, then west again on Pennsylvania Avenue at the Treasury Department Building.

At that point, the parade participants will enter the Court of "The Spirit of Freedom," where the President and Vice President will leave the line of march to review the parade from the Presidential Reviewing stand, located in front of the White House.

After leaving the Court of "The Spirit of Freedom," the parade will enter dispersal areas beginning at 17th Street and ending at 23rd Street.

The parade is expected to pass the Presidential reviewing stand in about two hours. The grandstands located along the line of march will accommodate 65,800 persons, which is 2,900 more than in 1953.

THE LINE OF MARCH

PRESIDENTIAL DIVISION

Robert V. Murray
Chief, D. C. Metropolitan Police
PLATOON—METROPOLITAN POLICE
"Λ" FORMATION
PLATOON—PARK POLICE
"IKE" FORMATION
GRAND MARSHAL:
Admiral Arthur W. Radford
INAUGURAL CHAIRMAN
Robert V. Fleming, and
Executive Vice Chairman Lewis T. Breuninger
PARADE COMMITTEE CAR:
Edward R. Carr, Parade Chairman
Major General John G. Van Houten,
Armed Forces Chairman
THE UNITED STATES ARMY BAND
PRESIDENTIAL ESCORT—BATTALION 3d U. S.
INFANTRY
PRESIDENTIAL COLORS
SECRET SERVICE CAR
THE PRESIDENT OF THE UNITED STATES
DWIGHT D. EISENHOWER and
MRS. EISENHOWER
THE VICE PRESIDENT OF THE UNITED STATES
RICHARD M. NIXON and MRS. NIXON
PRESS AND RADIO VEHICLES
MASSED COLORS OF THE 48 STATES, THE
DISTRICT OF COLUMBIA, ALASKA, GUAM,
HAWAII, PUERTO RICO, VIRGIN ISLANDS
THE CHIEF JUSTICE
Earl Warren
FORMER PRESIDENT OF THE UNITED STATES
Herbert Hoover
MEMBERS OF THE CABINET

FIRST DIVISION

DIVISION MARSHAL—Senator William Knowland
MASSED COLORS
UNITED STATES MILITARY ACADEMY BAND
THREE BATTALIONS OF CADETS, UNITED
STATES MILITARY ACADEMY,
WEST POINT, N. Y.
UNITED STATES NAVAL ACADEMY BAND,
ANNAPOLIS, MD.
THREE BATTALIONS OF MIDSHIPMEN,
UNITED STATES NAVAL ACADEMY,
ANNAPOLIS, MD.

UNITED STATES AIR FORCE ACADEMY BAND,
LOWRY AFB
TWO SQUADRONS OF CADETS, UNITED
STATES AIR FORCE ACADEMY,
LOWRY AFB
UNITED STATES COAST GUARD ACADEMY
BAND, NEW LONDON, CONN.
THE CADET CORPS, UNITED STATES COAST
GUARD ACADEMY, NEW LONDON,
CONN.
UNITED STATES MERCHANT MARINE
ACADEMY BAND, KINGS POINT, N. Y.
THE CADET MIDSHIPMEN, UNITED STATES
MERCHANT MARINE ACADEMY, KINGS
POINT, N. Y.
FIVE FREEDOM FOUNDATION ESSAY
WINNERS
2d BATTALION, 3d INFANTRY REGIMENT,
FT. MYER, VA.
WAC BAND, FORT McCLELLAN, ALA.
BATTALION, 82d AIRBORNE DIVISION,
FT. BRAGG, N. C.
RECONNAISSANCE TROOP, 2d ARMORED
CAVALRY REGIMENT, FT. MEADE, MD.
REDSTONE MISSILE, REDSTONE ARSENAL, ALA.
CORPORAL MISSILE, REDSTONE ARSENAL, ALA.
TWO HONEST JOHN MISSILES,
FT. CAMPBELL, KY.
TWO NIKE MISSILES, WASHINGTON, D. C.

SECOND DIVISION

DIVISION MARSHAL—Gen. John Reed Kilpatrick
MASSED COLORS
UNITED STATES MARINE CORPS BAND AND
DRUM AND BUGLE CORPS,
WASHINGTON, D. C.
UNITED STATES MARINE CORPS CEREMONIAL
BATTALION, WASHINGTON, D. C.
ONE UNITED STATES MARINE CORPS
COMBAT INFANTRY BATTALION,
QUANTICO, VA.
ONE COMPANY WOMEN MARINES,
WASHINGTON, D. C.
UNITED STATES NAVY BAND,
WASHINGTON, D. C.
ONE COMPANY, WAVES
ONE BATTALION, UNITED STATES NAVAL
TRAINING COMMAND, BAINBRIDGE, MD.
ONE TERRIER MISSILE, NORFOLK, VA.

LINE OF MARCH (Continued)

ONE REGULUS MISSILE, NORFOLK, VA.
ONE SPARROW MISSILE, NORFOLK, VA.
ONE SIDEWINDER MISSILE, NORFOLK, VA.
ONE FLOAT WITH MODELS OF U.S.S.
FORRESTAL AND U.S.S. NAUTILUS
UNITED STATES AIR FORCE BAND AND DRUM
AND BUGLE CORPS, BOLLING AFB
COMPOSITE GROUP, UNITED STATES AIR
FORCE, BOLLING AFB
GROUP, 1401st AIR BASE WING,
ANDREWS AFB
THE 543d WAF BAND, LACKLAND AFB
ONE SQUADRON WAF
ONE MATADOR MISSILE
ONE SNARK MISSILE

THIRD DIVISION

DIVISION MARSHAL—Hon. Wilbur M. Brucker
COMMISSIONERS, DISTRICT OF COLUMBIA
MASSED COLORS
METROPOLITAN POLICE BAND,
WASHINGTON, D. C.
FLOAT, DISTRICT OF COLUMBIA
NATIONAL VETERANS ORGANIZATIONS
PLATOON, MOUNTED U. S. PARK POLICE
COMPOSITE GROUP NATIONAL GUARD,
WASHINGTON, D. C.
COMPOSITE GROUP ARMY RESERVE,
WASHINGTON, D. C.
461st AIR FORCE BAND, CALIFORNIA
AIR NATIONAL GUARD
COMPOSITE GROUP, AIR NATIONAL GUARD,
WASHINGTON, D. C.
THE CITADEL BAND, CHARLESTON,
SOUTH CAROLINA
THE BLACK HORSE TROOP, CULVER, INDIANA
COMPOSITE GROUP CADETS,
WASHINGTON, D. C.
COMPOSITE GROUP CADETS, ST. JOHNS'
COLLEGE HIGH SCHOOL,
WASHINGTON, D. C.
COMPOSITE GROUP, NAVAL ROTC
FLOAT, AMERICAN FEDERATION OF
MUSICIANS

THE PARADE OF STATES

DELAWARE
PENNSYLVANIA
NEW JERSEY
GEORGIA
CONNECTICUT
MASSACHUSETTS

TREASURY SAVINGS BOND UNIT

At This Point The World's Largest Float
Will Present:
"Liberty and Strength
Through
Consent Of The Governed"

FOURTH DIVISION

DIVISION MARSHAL—Hon. Charles F. Thomas
TWELVE STATE UNITS IN THE FOLLOWING
ORDER:

MARYLAND
SOUTH CAROLINA
NEW HAMPSHIRE
VIRGINIA
NEW YORK
NORTH CAROLINA
RHODE ISLAND
VERMONT
KENTUCKY
TENNESSEE
OHIO
LOUISIANA

FIFTH DIVISION

DIVISION MARSHAL—Hon. Donald Quarles
TWELVE STATE UNITS IN THE FOLLOWING
ORDER:

INDIANA
MISSISSIPPI
ILLINOIS
ALABAMA
MAINE
MISSOURI
ARKANSAS
MICHIGAN
FLORIDA
TEXAS
IOWA
WISCONSIN

SIXTH DIVISION

DIVISION MARSHAL—Hon. E. Frederic Morrow
TWELVE STATE UNITS IN THE FOLLOWING
ORDER:

CALIFORNIA
MINNESOTA
OREGON
KANSAS
WEST VIRGINIA
NEVADA

NEBRASKA
COLORADO
NORTH DAKOTA
SOUTH DAKOTA
MONTANA
WASHINGTON

SEVENTH DIVISION

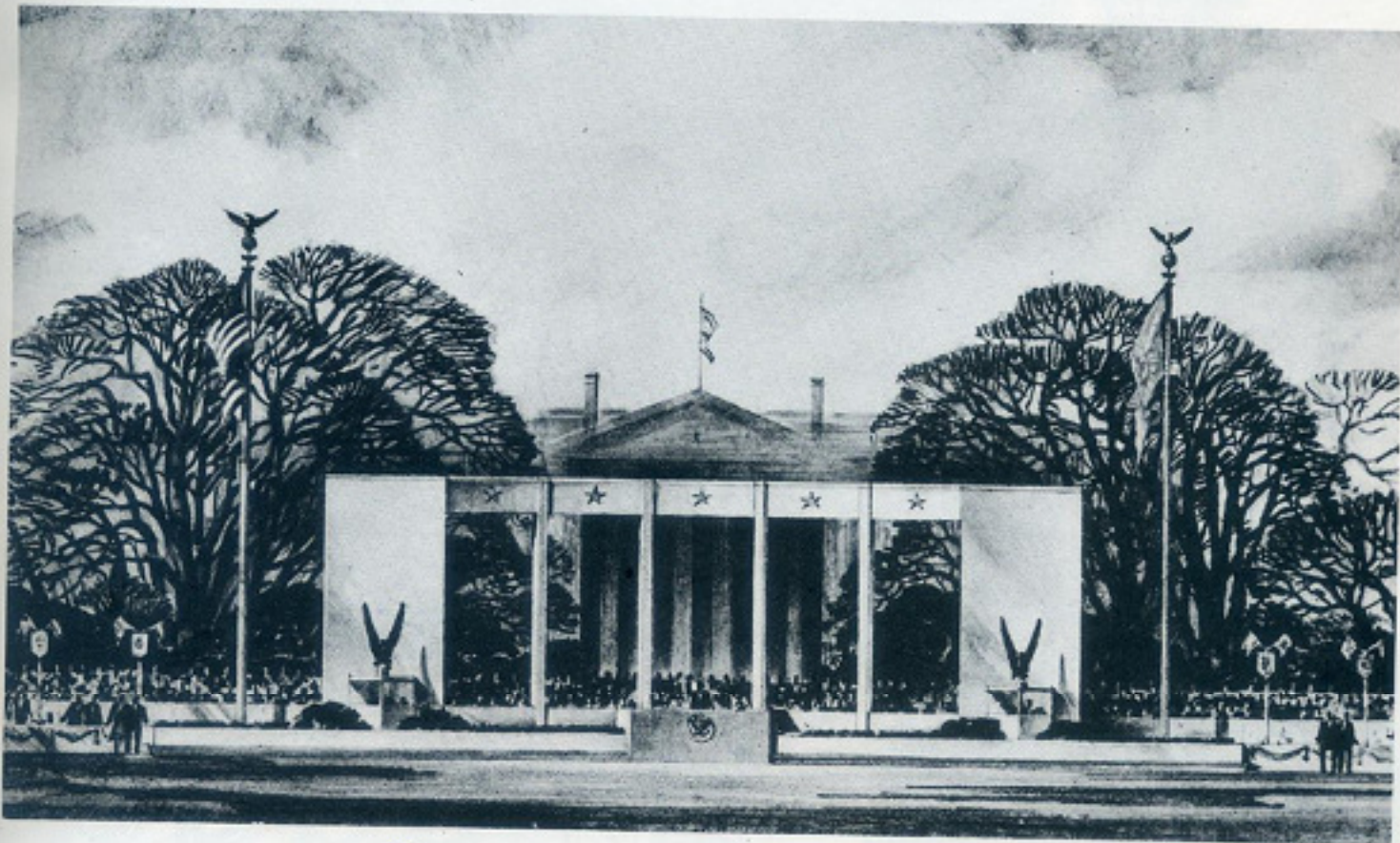
DIVISION MARSHAL—Hon. Ivy Baker Priest
SIX STATE AND SIX TERRITORIAL UNITS
IN THE FOLLOWING ORDER:

IDAHO
WYOMING
UTAH
OKLAHOMA

NEW MEXICO
ARIZONA
ALASKA
HAWAII
PUERTO RICO
VIRGIN ISLANDS
GUAM
AMERICAN SAMOA

EIGHTH DIVISION

DIVISION MARSHAL—
Maj. Gen. W. H. Abendroth
NATIONAL AND CIVIC ORGANIZATIONS
FINALE



The President's Reviewing Stand

The Presidential Reviewing Stand in the "Court of the Spirit of Freedom." The President and Vice President will leave the line of march at this point to review the Inaugural Parade. Reviewing stand designed by Robert A. Weppner, Jr.



Inaugural

TO BE HELD THE EVENING OF JANUA

THE INAUGURAL BALL is a tradition dating back to a spring evening in 1789 when gentlemen in powdered wigs and handsomely-gowned ladies danced the minuet before George and Martha Washington. The painting above is a historical record of the first Inaugural Ball, held in the hall of the New York Dancing Assemblies on lower Broadway.

Some records list President Madison's first ball on the evening of March 4, 1809 as the first ball, because it was the first to be arranged as an official event of Inauguration day.

Precedent for having the Inaugural Ball in more than one location dates from the Inauguration of President Harrison in 1841 when three balls were held. Four years later, two balls were given in honor of President Polk.

The Pension Office, which had an exceptionally large hall and a balcony, was the scene of some of the gayest and most elaborate balls in history from 1885 to 1909. There were no balls in 1913 and 1917 when President Wilson was inaugurated, and the custom continued until 1933 when balls again became an official event of the Inauguration.



Inaugural Ball

JANUARY 21, 1957, WASHINGTON, D. C

THE INAUGURAL BALL—the gracious and memorable social event of the 43rd Inauguration—will be held simultaneously in four locations the evening of January 21, 1957. Balls will be at the National Guard Armory, the Mayflower Hotel, the Sheraton Park Hotel and the Statler Hotel.

Decorations are planned around the Inaugural theme "Consent of the Governed," and will feature the replicas of official seals of the President, Vice President and the Cabinet. Pastel colors and subdued lighting will give the fullest effects to the ball gowns of the ladies. Two orchestras will play at each ball for dancing.

The President and Mrs. Eisenhower and the Vice President and Mrs. Nixon will attend the four celebrations.

Each of the states will have an official box at one of the ball locations. Guests, officials, and Members of Congress from a particular state will be invited to attend the ball at the location where the state is assigned. Members of the Diplomatic Corps, Cabinet officers, and patrons and patronesses will be in attendance in equal number at each ball.

Pictorial Review
of the
FIRST FOUR YEARS



Dwight D. Eisenhower begins his crusade five years ago with a homecoming speech in Abilene, Kansas, standing bareheaded in the rain—one of the great dramatic moments in American politics.



Vice President Nixon meets Sir Winston Churchill upon his arrival in Washington, June 1954.



The President-elect visits Korea in 1952, fulfilling his campaign promise. Within six months after taking office, the fighting ended in Korea.

West Germany's Konrad Adenauer arrives in Washington to meet the President, and is greeted by Secretary of State Dulles and Vice President Nixon.



During 1956, President Eisenhower met with other hemisphere Presidents in Panama City to solidify relations with our neighbors to the South.



On world tours covering 32 nations, Vice President Nixon proved an impressive ambassador of peace and good will. The enthusiastic crowds above greeted him in Manila, The Philippines.



The Prime Minister of Canada and the President of Mexico meet with President Eisenhower.



Here are candid photographs of America's first families: Clockwise from upper left—The President and Mrs. Eisenhower with three of their four grandchildren at Gettysburg; one of Mr. Eisenhower's favorite photographs—Grandson David greeting the President; the 1955 prize-winning news photo; the President with the Nixon family; a lighter moment when the Eisenhower-Nixon team discuss the fish that got away; and a small admirer getting a treasured autograph from the Vice President.





Scene during the final session of the Centennial Convention of the Republican Party, San Francisco Cow Palace.



Singing "God Bless America" from the podium at the Republican National Convention.



The Republican standard bearers just before Vice President Nixon started his first swing of the 1956 campaign.



The President and First Lady wave to crowds during the Republican National Convention in San Francisco, August 1956.



The President, who always has a keen interest in farm matters, checks cattle fodder on a visit to a government research station.



The President finds out for himself the opinions and needs of labor. He chats with workmen on a housing project.



"No one man—certainly not I—nor any political party could ever truthfully pretend that his efforts—or its efforts—alone can bring all good things to pass.

"But I dare speak a simple belief and—a simple prayer.

"I would dare believe that history may say that, during the years of my first Administration, the faith of our people—in the growth of peace and of justice—grew steadily stronger.

"And I would pray that—if it be the people's will that I continue my present service—the years of my second Administration may prove that—thanks to the labor of all Americans—this faith was justified."

—President Eisenhower at Pittsburgh, Pa., October 9, 1956



Past

PRESIDENTS OF THE UNITED STATES



GEORGE WASHINGTON
April 30, 1789-March 3, 1797



JOHN ADAMS
March 4, 1797-March 3, 1801



THOMAS JEFFERSON
March 4, 1801-March 3, 1809



JAMES MADISON
March 4, 1809-March 3, 1817



JAMES MONROE
March 4, 1817-March 3, 1825



JOHN QUINCY ADAMS
March 4, 1825-March 3, 1829

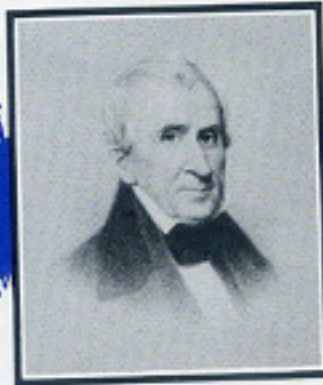


ANDREW JACKSON
March 4, 1829-March 3, 1837





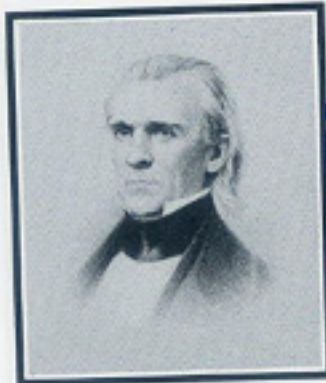
MARTIN VAN BUREN
March 4, 1837-March 3, 1841



WILLIAM HENRY HARRISON
March 4, 1841-April 4, 1841



JOHN TYLER
April 6, 1841-March 3, 1845



JAMES K. POLK
March 4, 1845-March 3, 1849



ZACHARY TAYLOR
March 5, 1849-July 9, 1850



MILLARD FILLMORE
July 10, 1850-March 3, 1853



FRANKLIN PIERCE
March 4, 1853-March 3, 1857



JAMES BUCHANAN
March 4, 1857-March 3, 1861



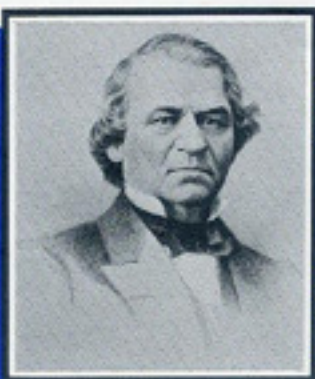
ABRAHAM LINCOLN
March 4, 1861-April 15, 1865





Past
PRESIDENTS OF
THE UNITED STATES

(Continued)



ANDREW JOHNSON
April 15, 1865-March 3, 1869



ULYSSES S. GRANT
March 4, 1869-March 3, 1877



RUTHERFORD B. HAYES
March 4, 1877-March 3, 1881



JAMES A. GARFIELD
March 4, 1881-September 19, 1881



CHESTER A. ARTHUR
September 20, 1881-March 3, 1885



GROVER CLEVELAND
March 4, 1885-March 3, 1889



BENJAMIN HARRISON
March 4, 1889-March 3, 1893



GROVER CLEVELAND
March 4, 1893-March 3, 1897





WILLIAM McKINLEY
March 4, 1897-September 14, 1901



THEODORE ROOSEVELT
September 14, 1901-March 3, 1909



WILLIAM H. TAFT
March 4, 1909-March 3, 1913



WOODROW WILSON
March 4, 1913-March 3, 1921



WARREN G. HARDING
March 4, 1921-August 2, 1923



CALVIN COOLIDGE
August 3, 1923-March 3, 1929



HERBERT HOOVER
March 4, 1929-March 3, 1933



FRANKLIN D. ROOSEVELT
March 4, 1933-April 12, 1945



HARRY S. TRUMAN
April 12, 1945-January 20, 1953



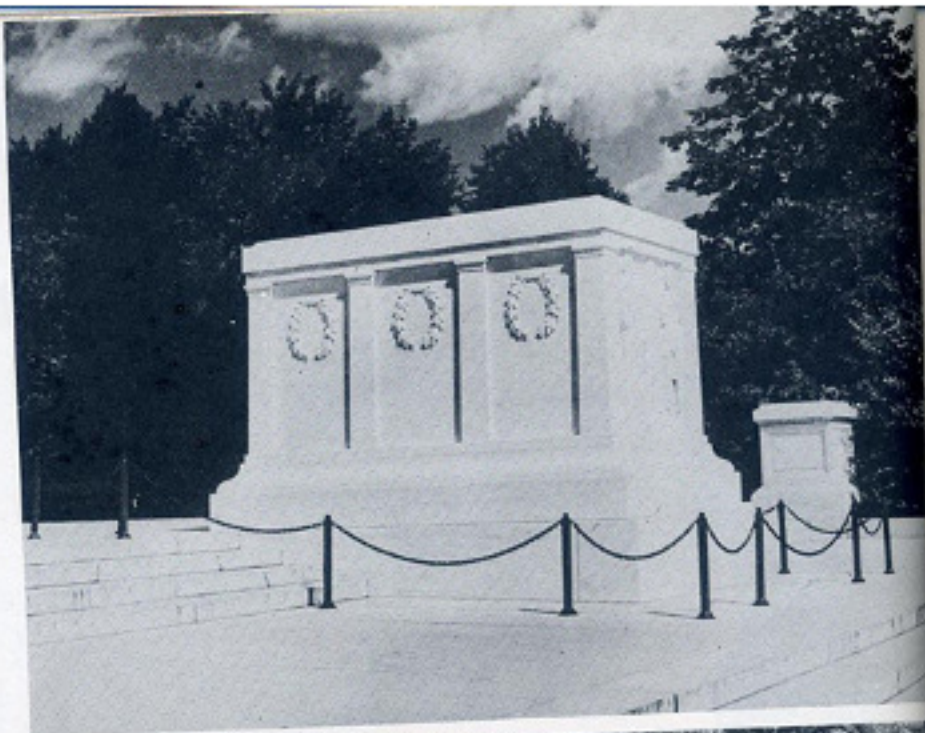
Welcome to your
NATION'S CAPITAL





TOMB OF UNKNOWN SOLDIER

"Here Rests in Honored Glory an American Soldier Known But to God." This is the simple inscription on the Tomb of the Unknown Soldier in Arlington National Cemetery. The tomb, carved from a block of white marble, overlooks the City of Washington. It contains the body of an unknown soldier who fell in France during World War I. The entombment took place on Armistice Day, November 11, 1921, in the presence of President Harding.



ROCK CREEK PARK

The beauty of Washington is enhanced by Rock Creek Park, which traverses the city from the Maryland state line in the northwest to the Potomac River near the Lincoln Memorial. This natural park, roamed many years ago by the Algonquin Indians, consists of 1,752 acres of woods, brooks and streams. A recreational haven for Washingtonians, it contains 27 miles of bridle paths and 11 miles of foot trails.



WHITE HOUSE

President John Adams became the first occupant of the White House, then known as "The President's House," in 1800. The Executive Mansion, built of Virginia sandstone, stands at 1600 Pennsylvania Avenue, about one mile and a half northwest of the Capitol. It was reopened in April, 1952, after being closed 3½ years for interior reconstruction and remodeling.





LINCOLN MEMORIAL

One of the most impressive of all the monuments and public buildings in the Capital is the Lincoln Memorial. This great marble temple, with its 50-foot-high Greek Ionic columns, is at the entrance to the Memorial Bridge leading to Arlington National Cemetery and the Tomb of the Unknown Soldier. Lincoln's Gettysburg Address is inscribed on the south wall of the Memorial, and on the north wall is his Second Inaugural Address.



WASHINGTON MONUMENT

The cornerstone of the Washington Monument was laid in 1848, but it was not until 1884 — 85 years after the First President's death — that the white marble shaft was completed. The Monument, which stands between the Capitol and the Lincoln Memorial, is more than 555 feet in height, and contains 898 steps from the entrance level to the 500-foot observation chamber.

UNITED STATES CAPITOL

The U. S. Capitol — the heart of the Nation — stands as an impressive symbol of the American form of government. The Statue of Freedom surmounting the dome is of bronze and weighs almost 15,000 pounds. George Washington laid the cornerstone of the north section of the building on September 18, 1793. Congress met for the first time in the North Wing in 1800, but not until 1863 was the structure completed substantially as it is today.





SUPREME COURT

This magnificent marble structure on Capitol Hill houses the Nation's highest tribunal — the Supreme Court of the United States. Prior to its completion in 1935, the sessions of the Court were held in the Capitol. The Court Chamber, where the nine Justices sit, is a great hall flanked by Ionic columns of Italian marble, and draped with curtains of rich dark-red velvet.

MELLON ART GALLERY

The National Gallery of Art, a gift to the Nation by the late Andrew W. Mellon, was built at a cost of more than \$15,000,000, and was opened to the public in March, 1941. One of the largest marble structures in the world, it houses a priceless collection of paintings and sculpture dating from the 13th to the 19th century. The handsome building, also known as the Mellon Art Gallery, faces the Mall, and has a second impressive entrance on Constitution Avenue at 6th Street, N. W.



MOUNT VERNON

Stately Mount Vernon, the home and burial place of George Washington, is on the Virginia shore of the Potomac River, 15 miles south of the Nation's Capital. The 18th century plantation home has been restored, and contains many historic documents and relics of the American Revolution and the early days of the Republic.





Roster of the INAUGURAL COMMITTEE 1957



ROBERT V. FLEMING, *Chairman*
LEWIS T. BREUNINGER, *Executive Vice Chairman*

CLYDE D. GARRETT, *Vice Chairman*
MRS. HOWARD ALDRIDGE COFFIN, *Vice Chairman*
GEORGE L. HART, JR., *Vice Chairman*
ROBERT E. McLAUGHLIN, *Vice Chairman*
DAVID B. KARRICK, *Vice Chairman*
BRIG. GEN. THOMAS A. LANE, *Vice Chairman*
SAMUEL SPENCER, *Vice Chairman*
EDWARD BURLING, JR., *Vice Chairman*
J. FRANKLIN WILSON, *Vice Chairman*
JAMES C. WILKES, *General Counsel*

RANDOLPH G. BISHOP, *Executive Secretary*
DOUGLAS WHITLOCK, *Secretary*
JOHN A. REILLY, *Finance Chairman*
DANIEL W. BELL, *Budget Chairman*
JAMES A. COUNCILOR, JR., *Comptroller*
GEORGE MURPHY, *Director of Entertainment*
L. RICHARD GUYLAY, *Director of Public Relations*
JOHN M. CHRISTIE, *Assistant to the Chairman*
RAY W. SMITH, *Assistant to the Executive Vice Chairman*
CLARENCE G. ADAMY, *Executive Assistant*

BRUCE BAIRD, *Treasurer*

LIAISON OFFICERS:

MISS BERTHA S. ADKINS, *Republican National Committee* WILLIAM ARMSTRONG, *Inaugural Committees*
THOMAS E. STEPHENS, *White House* ALEXIS DOSTER, *Citizens for Eisenhower*
J. MARK TRICE, *Joint Congressional Committee For The Inaugural*





GENERAL INAUGURAL COMMITTEE 1957

FRANCIS G. ADDISON, JR.
 FLOYD D. AKERS
 ALVIN L. AUBINOE
 REAR ADM. HAROLD D. BAKER
 EDWARD C. BALTZ
 JOHN T. BARNETT
 DR. J. BRECKINRIDGE BAYNE
 RALPH BECKER
 FRANK BELL
 WILLIAM C. BIRELY
 HULBERT T. BISSELLE
 JAMES C. BLACK
 JACK J. BLANK
 DR. WALTER A. BLOEDORN
 HERBERT C. BLUNCK
 EVERETT J. BOOTHBY
 J. C. BOWEN
 MRS. C. E. BOWERS
 A. MARVIN BRAYERMAN
 WILLIAM H. BRETT
 NEWTON BREWER, JR.
 WILLIAM M. B. BROOKS
 MISS RUTH M. BROWN
 ROBERT V. BRYCE
 GEO. B. BURRUS
 W. CAMERON BURTON
 THOMAS A. BUTT
 MORRIS CAFRITZ
 DANIEL J. CALLAHAN, JR.
 RENAH F. CAMALIER
 EDMUND O. CARL
 EDWARD R. CARR
 JAMES A. CASSIDY
 O. ROY CHALK
 LEON CHATELAIN, JR.
 E. TAYLOR CHEWNING
 A. E. CLAS
 EDWARD CLIFFORD
 JAMES A. COBB
 MR. AND MRS. DAVID C. COLLADAY
 MR. AND MRS. EDWARD F. COLLADAY
 MR. AND MRS. STEPHEN COLLADAY
 JAMES E. COLLIFLOWER
 MRS. MARK H. CORNELL
 MRS. ANNE B. COTE
 MRS. WILLIAM S. CULBERTSON
 HARRY DAVIDOW
 BOURBON A. DAWES
 HARRY A. DEBUTTS
 CHARLES DELMAR
 J. FLIPPER DERRICOTTE
 CLARK G. DIAMOND
 WALTER E. DILLON, JR.
 FRED L. DIXON
 NORRIS A. DODSON
 CORNELIUS H. BOHERTY
 THEODORE W. DOMINICK
 PROCTOR L. DOUGHERTY
 CHARLES D. DRAYTON
 T. HOWARD DUCKETT
 RT. REV. ANGUS DUN
 E. ROY DUNN

RICHARD P. DUNN
 MRS. FAY C. EDGAR
 MRS. DAVIS ELKINS
 DR. EDWARD L. R. ELSON
 JOSHUA EVANS, JR.
 WILLIAM T. FARICY
 GEORGE M. FERRIS
 DAVID E. FINLEY
 MRS. FAITH GWYNNE FISHER
 WILLIAM L. FLATHER, JR.
 ROBERT W. FLEMING
 JOHN CLIFFORD FOLGER
 WARREN R. FORSTER
 MRS. WILLIAM H. GALVIN
 DR. NORMAN GERSTENFELD
 RICHARD D. GIBBS
 CHARLES C. GLOVER, JR.
 RALPH L. GOLDSMITH
 ALFRED GOLDSTEIN
 MISS LOUISE GORE
 PHILIP LARNER GORE
 KARL K. GOWER
 PHILIP L. GRAHAM
 MAJ. GEN. U. S. GRANT, III
 WILLIAM H. GRASS
 ERNEST W. GREENE
 PHILIP GUARINO
 GRANVILLE GUDE
 HON. M. ROBERT GUGGENHEIM
 HARVEY J. GUNDERSON
 GILBERT HAHN
 GILBERT HAHN, JR.
 MISS ELIZABETH HALTOM
 WEST A. HAMILTON
 JOHN HAMLIN
 MISS KAY HANSON
 RINGGOLD HART
 NELSON T. HARTSON
 SIDNEY L. HECHINGER
 JOSEPH G. HERBERT, JR.
 A. B. HERMANN
 CLARENCE B. HEWES
 MELVIN D. HILDRETH
 JOHN HILLIARD
 MISS LENA HITCHCOCK
 REV. J. I. S. HOLLOWMAN
 MAJ. GEN. REUBEN C. HOOD, JR.
 MRS. ERNEST W. HOWARD
 FRANCIS C. HUNTER
 DR. OSCAR B. HUNTER, JR.
 MRS. B. LOWMEDES JACKSON, JR.
 C. F. JACOBSEN
 FRANK R. JELLEFF
 JAMES M. JOHNSTON
 EDWARD K. JONES
 WILEY O. JONES
 WILLIAM H. JOYNER
 HOWARD W. KACY
 NORMAN C. KAL
 FRANCIS J. KANE
 SOL KANN
 SAMUEL H. KAUFFMANN

CECIL D. KAUFFMANN
 ROBERT S. KELLER
 WILLIAM F. KELLY
 H. CECIL KILPATRICK
 MILTON W. KING
 PRESTON C. KING, JR.
 MORRIS L. KRAFT
 THOMAS P. KROCK
 ADELBERT W. LEE
 FRANK LEON
 JOHN LOUGHRAN
 FRANK J. LUCHS
 RUFUS LUSK
 C. J. MACK
 EARL MACKINTOSH
 J. NOEL MACY
 J. WILLARD MARRIOTT
 MRS. HAROLD N. MARSH
 RICHARD MARSH
 JOHN E. McCLURE
 MRS. JOSEPH C. McGARRAGHY
 BENJAMIN M. McKELWAY
 WILLIAM J. McMANUS
 MRS. HARRY G. MEEM
 HARRY L. MERRICK
 EUGENE MEYER
 ROY H. MILLENSON
 ALLISON N. MILLER
 JOHN W. MILLER
 DOUGLAS G. MODOE
 C. BEDELL MONRO
 L. GARDNER MOORE
 E. K. MORRIS
 EDGAR MORRIS
 JAMES B. MORRISON
 MRS. CHARLES E. MURRAY
 FRANCIS A. MURRAY
 ROBERT V. MURRAY
 ALFRED G. NEAL
 MAURY L. NEE
 CLIFFORD H. NEWELL
 CHARLES L. NORRIS, JR.
 RICHARD A. NORRIS
 MOST REV. PATRICK A. O'BOYLE
 FRANK O'CONNELL
 MANDEL OURISMAN
 CLAUDE W. OWEN
 THORNTON W. OWEN
 JOHN OWENS
 ANDREW PARKER
 BARRINGTON D. PARKER
 GEORGE A. PARKER
 G. H. PARRISH
 DR. ROBERT B. PEARSON
 JAMES C. PETRILLO
 EUGENE H. PHIFER
 LANDRA B. PLATT
 HARRY E. FOLK
 RABBI TZVI H. PORATH
 I. LEE POTTER
 CLEMENT F. PRELLER
 WILLIAM H. PRESS

THOMAS A. RAYSOR
 CHARLES S. RHYNE
 LAWRENCE RICHEY
 JULES C. RICKER
 JOHN C. RILL
 GUSTAVE RING
 MRS. JACK ROGERS
 HERBERT S. ROSENBERG
 JUDGE O. ELLSWORTH RUE
 STANLEY RUMBROUGH, JR.
 WILLIAM G. RUSSELL
 H. L. RUST JR.
 RUFUS W. LEE
 HERMAN F. SCHEURER, JR.
 WILLIAM F. SCHNITZLER
 JAMES E. SCHWAB
 DR. DANIEL L. SECKINGER
 WILLIAM E. SHANNON
 JAMES McD. SHEA
 CARL L. SHIPLEY
 REV. ALBERT P. SHIRKEY
 HON. AND MRS. JOUETT SHOUSE
 HON. JOHN F. SIMMONS
 JOHN J. SIRICA
 GRAHAME T. SMALLWOOD, JR.
 FRED A. SMITH
 JOHN LEWIS SMITH, JR.
 A. J. SOMERVILLE
 JACK SPAIN
 DR. W. CALHOUN STIRLING
 AMBASSADOR L. CORRIN STRONG
 MARK SULLIVAN, JR.
 MRS. A. BURKS SUMMERS
 PHILIP M. TALBOTT
 HOWARD E. THOMPSON
 JOHN W. THOMPSON, JR.
 LEWIS S. THOMPSON
 CHARLES H. TOMPKINS, JR.
 JOHN TOPE
 MORGAN C. TORREY
 FRED W. TROPP
 JOHN UNDERHILL
 MAJ. GEN. J. C. VAN HOUTEN
 H. HOLMES VOGEL
 CHANNING S. WALKER
 DR. M. T. WALKER
 GLENN E. WATTS
 FRANK E. WEAKLY
 B. EARL WENGER
 MRS. HELEN GATLEY WHEELER
 DR. CHARLES STANLEY WHITE
 MARTIN T. WIEGAND
 MRS. JAMES C. WILKES
 WESLEY S. WILLIAMS
 JOHN J. WILSON
 ORME WILSON
 LLOYD J. WINELAND
 ROBERT D. WISE
 DR. WALLACE M. YATER
 IRVING B. YOCHELSON
 MRS. ROSE SAUL ZALLES
 DEWEY ZIRKIN



SUB-COMMITTEES—INAUGURAL COMMITTEE 1957



ARMED SERVICES PARTICIPATION

MAJ. GEN. JOHN G. VAN HOUTEN, USA, Chairman
 Rear Adm. Harold D. Baker, USN
 Maj. Gen. Reuben C. Hood, Jr., USAF
 Rear Adm. William W. Kenner, USCG
 Col. Leonard F. Chapman, Jr., USMC

Joint Executive

Col. John A. Bradley USA Chairman
 Capt. Frank D. Glambattista USN
 Col. Littleton J. Pardue USAF
 Com. Arnold E. Carlson USCG
 Maj. Harold R. Kurth Jr. USMC

Liaison

Lt. Col. Roy J. Batterton Jr., USMC, Chairman
 Com. William F. Cass, USCG
 Lt. Col. William O. Frazier, USA
 Com. Robert G. Tower, USN
 Maj. James E. Geurts, USAF

Logistics

Col. Milton S. Glatterer, USA, Chairman
 Lt. Col. Joseph E. Dick, USAF
 Com. James Hyslop, USCG
 Lt. Com. Frank P. Pirrmane, USN
 Maj. Lawrence V. M. Wickham, USMC

Parade

Col. Robert D. Burhans, USA, Chairman
 Com. William F. Adams, USCG
 Lt. Col. Robert Y. Decker, USAF
 Maj. Samuel L. King, USA
 Maj. Carl H. Schmidt, USMC
 Lt. Romero M. DiGirola, USN
 Lt. Col. Leonard A. Olson, USA
 Lt. Col. Royal R. Maszy, USA
 Lt. Col. Lawson B. Caskey, USA
 Cdr. Ralph Pickles, USN

Public Relations

Col. George R. Creel, USA, Chairman
 Lt. Com. John F. Mayer, USN
 Maj. Raymond H. W. Pelt, USMC
 Maj. Alva W. Wilber, USAF
 Lt. Sam Tricchio, USCG

Special Events

Col. Robert E. White, USAF, Chairman
 Lt. Com. Richard Arlander, USCG
 Lt. Col. Merlin L. Davis, USA
 Maj. John C. Scharf, USMC
 Lt. Douglas W. Madison, USN

Transportation

Lt. Col. Fred C. Allen, USA, Chairman
 Com. Robert Rea, USCG
 Maj. Joseph J. Paulone, USAF
 Maj. Earl K. Vickers, USMC
 Lt. James M. Hill, USN
 Lt. Col. Gerald C. Adams, USA

VIP Aids

Capt. Charles W. Moses, USN, Chairman
 Com. William L. Morrison, USCG
 Lt. Col. Jodie G. Stewart, USAF
 Maj. Gordon H. Wilson, USAF
 Capt. John W. Haggerty III, USMC

AUDIT AND COMPTROLLER

JAMES A. COUNCILOR, Jr., Chairman
 Mrs. Edna H. Nick, Vice Chairman

BUDGET

DANIEL W. BELL, Chairman
 Bruce Baird
 Samuel Biddle
 Mrs. C. E. Bowers
 Lewis T. Breuninger
 Mrs. Cyrus S. Ching
 Howard W. Kacy
 Edgar Morris
 M. Everett Parkleson
 George M. Quirk
 John A. Riley
 Hamilton Robinson

Ex Officio

Bruce Baird
 Lewis T. Breuninger
 Don Byrne
 Robert V. Fleming
 John A. Reilly

COMMITTEE COORDINATOR

GRAHAM T. SMALLWOOD, JR., Chairman
 Mrs. Kathryn H. Madson, Secretary
 William P. Chisholm, Assistant to Chairman

CONCESSIONS

RALPH E. BECKER, Chairman
 Robert F. Kneipp, Vice Chairman
 Gerald P. Price, Vice Chairman
 Walter W. Burdette
 F. Murray Callahan
 Insp. Robert D. Chesleit
 Edmund Dreyfus
 William N. Dripps
 Fred J. Huber
 T. Sutton Jeff
 Stanley R. Levine
 Thomas N. Mudd
 C. T. Nottingham
 Capt. R. C. O'Connor
 E. A. Frichard
 John H. Riley
 Walter C. Thompson

DECORATIONS

RICHARD D. GIBBS, Co-Chairman
GRANVILLE GUDE, Co-Chairman
 Elizabeth Isa, Secretary
 James E. Colliflower
 Edwin W. Davis
 Oscar I. Dadek
 Herbert A. Friebe
 Ringgold Hart
 Wayne Mead
 Harry Merrick, Jr.
 John Reeves
 Clarence Jo Shaffer
 Boris V. Timchak

FESTIVAL

MRS. A. BURKS SUMMERS, Chairman
 George Murphy, Director of Entertainment
 Edward R. Carr, Vice Chairman
 Alfred C. Gordon, Jr., Vice Chairman
 Orville Crouch, Vice Chairman
 Charles H. Day, Vice Chairman
 Rev. Gilbert Hartke, Vice Chairman
 J. Willard Marriott, Vice Chairman
 Bryson B. Bash, Vice Chairman
 W. Royce Powell, Executive Assistant

Box

Edward E. Williams, Chairman
 Miss Louise Gore, Chairman
 Mrs. Frederick John Callen
 Mrs. Albert N. Abajian
 Mrs. George M. Aspell
 Mrs. Andrew C. Fretz
 Mrs. Paul H. Hatch
 Mrs. Albert H. Holland
 Miss Virginia G. Kemp
 Mrs. Thomas H. Litch
 Mrs. Patricia Luce
 Mrs. Carole Martineau
 Mrs. Harry A. McDonald
 Mrs. Karl Mandt
 Mrs. P. J. J. Nicolaides
 Mrs. John E. Shields
 Mrs. Thomas E. Stephens

Department of Defense

Mrs. Roy St. Lewis, Chairman
 Mrs. L. B. Brubaker
 Mrs. J. Hunter Dram
 Mrs. Charles Finucane
 Mrs. Albert L. Hoffman
 Mrs. Douglas Mode
 Mrs. John Shields
 Mrs. H. Ben Smith

Hall Arrangements

Allred C. Gordon, Jr., Chairman
 E. George Ballman
 Ernest H. Day
 Pat Fitzpatrick
 Jerome J. Harris
 Stephen J. Johnson
 Col. Waldron E. Leonard

Thomas Pope
 William R. Richards
 Roy Simmons

Host Star Escort

Thaddeus Browns, Chairman
 Jack Foxe, Chairman
 Joel Margolis, Chairman
 Harold K. Robinson, Chairman
 Robert M. Adams
 Shep Allen
 Jerome D. Baker
 Thomas W. Baldrige
 Thomas J. Breyhill
 Harry Coonin
 Dr. Sylvan Danzansky
 Clark M. Davis
 Hersh De La Viaz
 Sidney Eckman
 Morton Gerber
 Florence O. Hint
 William Marvin Hoyle
 Vincent G. Iorio
 Joseph Krozman
 Frank La Falce
 Rick La Falce
 Herman A. Lowe
 Hal Marshall
 Herman M. Paris
 E. Wade Pearson
 Cody Planfischl
 David M. Poland
 H. E. Robinson
 Jay Royen
 M. Robert Rogers
 David Sadel
 John K. Smithson
 Gerald Wagner
 Paul Wall
 Campbell Hagner Watson

Host and Hostess to Reception

Mrs. William A. Hepburn, Chairman
 J. R. Pat Gorman, Co-Chairman
 David H. Gordon, Co-Chairman
 Mrs. Tyler R. Atherton
 Don P. Bostwick
 Mrs. Mary E. Caldwell
 Mrs. Frank A. Coppock
 Mrs. Kirkley Coulter
 Donald M. Counihan
 W. Perry Doing
 Ben C. Fisher
 Benny Fitcher
 Mrs. Caroline Freeland
 Mrs. James Harris
 Jeanne E. Korpeck
 William R. Lockemby, Jr.
 Elizabeth Lewis
 Frank Meyer
 Daniel H. Neviser
 Mrs. Hammond L. Oder
 Mrs. G. Russell
 Oscar A. Whitehouse
 Talmage Wilckir
 Mrs. Wilbur Young

Hostesses to Artists

Mrs. J. Hunter Drum, Jr., Chairman
 Mrs. Wiley T. Buchanan, Jr.
 Mrs. William F. Burdick
 Mrs. Charles C. Finucane
 Mrs. Stuart G. Frieze
 Miss Ruth D. Galloway
 Mrs. Barry M. Goldwater
 Mrs. John H. King, Jr.
 Mrs. Gilbert G. La Gorce
 Mrs. Corvin R. Lockwood
 Mrs. Herman A. Lowe
 Mrs. A. Lothrop Luttwell
 Mrs. William Beverly Mason
 Mrs. Roy St. Lewis
 Mrs. Robert E. Schenck
 Mrs. Edwila Shelton
 Mrs. John Francis Shields
 Mrs. E. Carle Shotwell
 Mrs. Delbert B. Slater
 Mrs. Bea H. Smith
 Mrs. Edward Sweeney
 Mrs. Campbell Watson
 Mrs. G. Louis Weller, Jr.

Invitation

Mrs. Randolph G. Bishop, Co-Chairman
 Mrs. William P. MacCracken, Co-Chairman
 Mrs. Prentiss Coonley
 Mrs. James A. Councilor, Jr.
 Mrs. Arthur W. Gardner
 Mrs. Louis A. Graville
 Mrs. Alexander Hagrier
 Mrs. Randall Hagner
 Mrs. De Witt S. Hyde

Mrs. A. Lewis MacCracken
 Mrs. Charles Carroll Morgan
 Mrs. W. A. Morgan
 Mrs. J. Miller Poppelton
 Mrs. Frank C. Waldrop

Liaison Officers

Mrs. Charles W. O. Bunker
 Mrs. William Burdick
 Edward Burling, Jr.
 Mrs. Howard A. Coffin
 Mrs. William H. G. Fitzgerald
 Mrs. Peter Gibson
 Mrs. Evan Howell
 Mrs. Irene Juno
 Mrs. Garfield Kass
 Mrs. Russell V. Meck
 Hazel Markel
 Mrs. Karl Muedt
 Honorable Mildred E. Reeves
 Mrs. Roy St. Lewis
 Mrs. Ida S. Taylor
 Mrs. Mark Trice

Patron and Patroness

Mrs. Fulton Lewis, Jr., Chairman
 Mrs. Robert Hurlleigh
 Edward F. McGinnis
 Mrs. Harry M. Moses
 Mrs. Roger Robb

Ticket Committee

Mrs. Peter Cameron, Chairman
 Mrs. E. A. Riley, Co-Chairman
 Mrs. Charles E. Krampf, Vice Chairman

Mrs. Henri Kere Carnal
 Mrs. Arthur Cox
 Mrs. Fabian Cox
 Dr. Darrell C. Crain
 Mrs. William E. Cramer, Jr.
 Mrs. T. H. Creighton, Jr.
 Mrs. George Dietz
 Mrs. John N. Dismore
 Mrs. Richard P. Doherty
 Mrs. Herman LeRoy Emmet
 Carl W. Flesher
 John J. Greer
 Mrs. Kenneth F. Hallinan
 Mrs. Edward McKinney Hunt
 Mrs. Claude W. Lamont
 Mrs. Corwin Lockwood
 Mrs. John Marshall, Jr.
 Mrs. Conrad E. Myhre
 Mrs. John Alexander Portner
 Mrs. Edgar E. Quayle
 Doris Fielding Reid
 Mrs. Arthur E. Ripley
 Richard P. Schulze
 Mrs. Henry Taff Snowdon
 Mrs. Herbert A. Teilmann
 Mrs. Julia B. Terry
 Mrs. William Henry Weeks
 Mrs. George Louis Weller

Treasurer

Miss Ruth M. Brown, Chairman
 Mrs. Walter E. Balfon
 Mrs. J. Gordon Douglas
 Mrs. Rebecca Le Fèvre Swope
 Mrs. Frank E. Weekly

FINANCE

JOHN A. REILLY, Chairman
 James C. Black, Vice Chairman
 Robert W. Fleming, Vice Chairman
 Francis G. Addison, Jr.
 Floyd D. Akers
 F. Gloyd Awalt
 Edgar A. Bolshaw
 Edward C. Baltz
 John T. Barrett
 Frank J. Bell
 Jack J. Blank
 Everett J. Boothby
 George B. Burris
 Lee D. Butler
 Thomas A. Butt
 Morris Cairity
 Daniel J. Callahan
 James A. Cassidy
 O. Roy Chalk
 Leon Chatelain, Jr.
 E. Taylor Chewing, Sr.
 Edward J. Clarke
 James E. Colliflower
 Barnum L. Colton
 Karl W. Corby
 Orville Crouch
 Harry Davidson
 F. Wood Davis
 Harry A. deBaths
 Clark G. Diamond
 George A. Didden, Jr.

★ ★ ★ **SUB-COMMITTEES—INAUGURAL COMMITTEE 1957** ★ ★ ★

Charles B. Dulcan
Richard F. Duns
R. Roy Duns
Earl H. Gammons
Herbert H. Goodman
Leo Goodwin
Phillip L. Graham
Samuel W. Hauser
M. K. Heartfield
Joseph H. Himes
Frank R. Jelliff
Eric A. Johnston
Rowland Jones, Jr.
Howard W. Kacy
Francis J. Kass
Garfield I. Kass
S. H. Kauffmann
Cecil D. Kaufmann
Fred J. Kogod
Preston C. King, Jr.
W. Russell Lamer
W. Herbert Lamb
Adm. Emory S. Land
C. J. Mack
Frank J. McCarthy
George Meany
Harry L. Merrick
Joseph C. Monaghan
Edgar Morris
E. K. Morris
James B. Morrison
William J. Mosgey
Francis A. Murray
Maurice L. Nee
John T. O'Rourke
Thornon W. Owen
Andrew Parker
Eugene H. Pfifer
Lendra B. Platt
Col. Gustave Ring
H. L. Rust, Jr.
Jerome M. Saks
William E. Shannon
Robert C. Simmons
Carlton D. Smith
L. P. Stewart
Ward B. Stringham
Dr. Donald H. Stubbs
A. Burks Summers
Mrs. Garvin E. Taskersley
Dr. J. Ross Veal
H. Holmes Vogel
Frank E. Weakly
Dr. Charles Stanley White
A. Hermann Wilson

GENERAL SERVICES

WILLIAM ARMSTRONG, Chairman
H. L. Rust, Executive Vice Chairman
Andrew J. Murphy, Executive Secretary
Dorcas Ramey, Secretary

Badges and Insignia
Philip Gore, Vice Chairman
Rudolph J. Carson
Paul E. Croxson, Jr.
Joseph E. Keller

Communications and Amplification
Gaylord P. Hoas, Vice Chairman
William Baylor
Leonard F. Heisicke
C. H. Maher
Lt. Col. R. R. Maury
Carl E. Pitt, Jr.
Sam E. Scruggs

Carillon
Harry T. Thompson, Vice Chairman
Charles T. Chapman

Grandstand Operations
A. Murray Preston, Vice Chairman
Douglas C. Moore
Paul Seltzer
Glenn E. Watts
Paul E. Wemple

Ticket Collection
Douglas R. Phillips, Vice Chairm
Thomas Heening
Roy C. Swab
Herbert J. Wilkins

Complaints and Adjustments
Howard B. Blanchard, Vice Chairman
George E. Math
E. A. Powell

Ushers and Supervisors
L. Ray Torpy, Vice Chairman
William K. Bennett, Jr.

A. Robert Hamilton
Lyman W. Karr

Chairs and Signs—Lost and Found
H. F. Brownefield, Vice Chairman
Kirby Kendall
Frank Selby

First Aid Personnel
Daniel A. Leonard, Vice Chairman
Ralph F. Bartley
Bernard J. Hogedora
G. Edward Todd

Commissary Contracts
Charles S. MacDonald, Vice Chairman
John T. Mahula
Louise Wiesinger

Commissary Service
Joseph F. Robinson, Vice Chairman
Richard N. Dixon
Harold P. Gans
Harry A. Jorgensen

Line of March
Raphael Semmes, Vice Chairman
William S. Anderson
A. Smith Bowman
G. G. Gately
Fred D. Maize

Girl Scout Activities
Mrs. Robert M. Eaves, Vice Chairman
Mrs. Trisham Coffin
Miss Margaret E. Gregg
Miss Helaine A. Todd

Boy Scout Activities
Earle P. Bross, Vice Chairman
Thomas F. Lehmiere
Percy H. Russell, Jr.
Thomas R. Uffelman

Health and Safety
Edward K. Uhler, Vice Chairman
John V. Brink
Washington I. Cleveland
David Locking

Parade
Colonel George E. Stover,
Vice Chairman
Raymond F. Heck
Charles B. Glover

Guard of Honor
Brig. Gen. George O. Van Orden,
USMC, Ret., Vice Chairman
Mark Evans
Edward F. Feaning, Jr.

Reserves
Francis Gregory, Vice Chairman
John Grosemeyer
Rocco Pomponio

Visitors
David G. Bross, Vice Chairman
Walter Ryan, Jr.
Dr. Frank H. Wiley

HOUSING

A. B. HERMANN, Chairman
Robert D. Blackstone, Vice Chairman
Herbert C. Blusack, Vice Chairman
C. J. Mack, Vice Chairman
Mrs. Helen M. Miller,
Executive Secretary

John M. Hamlin, Executive Assistant
Edward C. Beltz
Donald M. Bernard
George C. Clarke
John C. Cost
Bourbon A. Dawes
Howard L. Grothe
Godfrey Kauffmann
Austin Kenny
Rayburn Miller
L. Gardner Moore
Hudson Moses
Charles L. Norris, Sr.
Kurt A. Smith

INAUGURAL BALL

CARL L. SHIPLEY, Chairman
William H. Preis, Exec. Vice Chairman
Edward Burling, Jr., Vice Chairman

Newell W. Ellison, Vice Chairman
George E. C. Hayes, Vice Chairman
Garfield I. Kass, Vice Chairman
Mrs. G. Gordon Moore, Vice Chairman
Mrs. Julie B. Kirlin,
Assistant to Chairman

Honorary Hosts and Hostesses
Miss Bertha S. Adkins
Mrs. Howard Aldridge Coffin
Clifford Folger
Clyde D. Garrett
Leonard W. Hall
George L. Hart, Jr.
Andrew F. Schoeppl
Richard M. Simpson

Residing at Ball Locations
Garfield I. Kass,
Chairman National Guard Armory
Mrs. William F. Burdick,
Co-Chairman National Guard Armory
Mrs. G. Gordon Moore,
Chairman Mayflower Hotel
Mrs. James C. Wilkes,
Co-Chairman Mayflower Hotel
Edward Burling, Jr.,
Chairman Sheraton Park Hotel
Mrs. George L. Hart, Jr.,
Co-Chairman Sheraton Park Hotel
Newell W. Ellison,
Chairman Statler Hotel
Mrs. Clyde D. Garrett,
Co-Chairman Statler Hotel

Advisory
Thaddeus H. Brown, Jr., Co-Chairman
Clarence B. Hewes, Co-Chairman
Mrs. Merriweather Post, Co-Chairman
Mrs. Carol Arth
Mrs. Edward Burling, Jr.
Mrs. Wm. Hooper Dayton
Hon. Charles S. Dewey
John R. Eakin
Joseph Fairbanks
Mr. and Mrs. Robert W. Fleming
Mrs. Edmund K. Goldsborough
Mrs. Kingston Gould
Harvey J. Gunderson
John L. Harris
Mrs. Paul H. Hatch
Mrs. Rose Kass
Mr. and Mrs. Gould Lincoln
Clifford H. Newell
Mrs. Fletcher Plumley
Mr. and Mrs. Harry E. Polk
Mr. and Mrs. Rufus G. Poole
Mr. and Mrs. John J. Sirica
Rev. E. C. Smith
Dr. A. L. Spencer
Mrs. Ida S. Taylor
Mrs. John Toppe
Dr. M. T. Walker

Armed Services
Adm. Arthur W. Radford, USN,
Chairman
Adm. Arleigh A. Burke, USN
Gen. Randolph McC. Pate, USMC
Gen. Maxwell D. Taylor, USA
Gen. Nathan F. Twining, USAF

Armory
Arthur J. Bergman, Chairman
James E. Antis
C. K. Brown, Jr.
Raymond R. Dickey
Ernest C. Dickson
Roger B. Douless
James E. Jones
Lyle O. Jones
Stephen S. Madison
Ernest O. Paloud
John A. Reilly
Leo Schlesberg
Mrs. William E. Wrafter

Arrangements
Mrs. Bruce Baird, Co-Chairman
Mrs. Francis V. duPont, Co-Chairman
Mrs. McCook Knox, Co-Chairman
Mrs. Harold N. Marsh, Co-Chairman
Mrs. W. Beverley Mason, Jr.,
Co-Chairman

Boxes
James Cusard Black, Chairman
Mrs. Robert Low Bacon
Mrs. William H. Brett
Mrs. Smith W. Brookhart
Hon. M. Yashti Burr
Mrs. J. Gordon Douglass
Mrs. M. Robert Guggenheim

Mrs. John Morris Kerr
Mrs. Logan Morris
Mrs. Martin I. Murphy
Mrs. H. H. Norein
Admiral Neill Phillips
Mrs. Albert J. Robertson
Mrs. Paul E. Shorb
Miss Rebecca LeFewe Swope
Mrs. Richard H. Todd

Coordinating
Grahame T. Smallwood, Jr., Chairman
Mrs. Albert B. Hermans, Co-Chairman
Maurice Friedman
Malvin Gelman
Mrs. Clinton S. Raynor
Nelson C. Root

Decorations
Mrs. Gilbert Hahn, Jr., Co-Chairman
Mrs. Joseph C. McGarraghy,
Co-Chairman
Mrs. Irving Berger
Mrs. C. Thomas Claggett
Mrs. Mark H. Correll
Mrs. John A. Danaher
Mrs. John Washington Davidge
Mrs. Neill Phillips
Mrs. William H. Press
Mrs. Marie Rogers
Mrs. John Lewis Smith, Jr.
Mrs. J. Ernest Wilkins
Mrs. Whitney Young
Mrs. Edward Zimmerman

Diplomatic Liaison
His Excellency Wilhelm Munthe
de Morgenstjerne
Hon. John F. Simmons

Distinguished Guests
Hon. and Mrs. William P. McCracken,
Jr., Chairman
Mr. and Mrs. Robert C. Baker
Mr. and Mrs. Foshaine C. Bradley
Mrs. Harold Hitz Burton
Mr. and Mrs. Lee D. Butler
Hon. James A. Cobb
Col. and Mrs. J. Huster Drum
Mrs. Wade Ellis
Mr. and Mrs. Norman B. Frost
Mr. and Mrs. Charles C. Glover, III
Mr. and Mrs. Edward Cleveland
Sweeney
Mr. and Mrs. Bernard S. Van
Rensselaer
Hon. and Mrs. Orme Wilson

Entertainment
George Murphy, Chairman
Mrs. C. E. Bowers
Barnee Breskin
Mrs. Tamara Dmitrieff
Mrs. Clifford Folger
Hugh T. Fullerton
Col. West A. Hamilton
Mrs. Randall Hegner
Mrs. David B. Karrick
Milton W. King
Mrs. Howard Mitchell

Finance
Garson Nordlinger, Jr., Chairman
Ellsworth C. Alvord
Bruce Baird
Samuel Biddle
Herbert C. Blusack
Miss Kathryn E. Bowers
Mrs. Cyrus S. Ching
Mrs. E. H. Cushing
Mrs. Faith Gwynne Fisher
Mrs. Carroll D. Kearns
Orton S. Lloyd
Mr. and Mrs. Carroll Morgan
Royce Powell
Julia C. Ricker
James E. Schwab
Douglas R. Smith

Floor
Ralph E. Becker, Co-Chairman
Hon. Evan Howell, Co-Chairman
John A. Logan, Co-Chairman
Edgar Morris, Co-Chairman
Mrs. Clark Butler
Mrs. Edward R. Carr
Bernard J. Gallagher
Charles C. Glover, Jr.
Mrs. Alfred Goldstein
Miss Louise Gore
John F. Hillyard



SUB-COMMITTEES—INAUGURAL COMMITTEE 1957



George A. Horkan, Jr.
Dr. O. Benwood Hunter, Jr.
Edward F. McGinnis
William J. McManus
Mrs. J. Willard Marriott
Roy H. Millerson
Lawler B. Reeves
Ray W. Smith
Douglas Whitlock

Flower

Mrs. Marion Nailor Bailey,
Co-Chairman
Mrs. Edward A. Beard, Co-Chairman
Mrs. Charles C. Benedict,
Co-Chairman
Mrs. Parker W. West, Co-Chairman
Mrs. Charles W. Adams, Jr.
Mrs. Robert Taylor Bebbas
Mrs. Warren E. Burger
Mrs. Peter Cameron
Mrs. Avis J. Carter
Mrs. William R. Castle
Mrs. Blair Childs
Mrs. Anne Cote
Miss Joella F. Howell
Miss Marilyn L. Howell
Mrs. Leonard P. Walsh
Mrs. James F. Foley
Mrs. Jewel Ziegemeier

Hosts and Hostesses

Gen. and Mrs. Charles L. Bolte,
Co-Chairman
Hon. and Mrs. Roy St. Lewis,
Co-Chairman
Hon. and Mrs. Jovett Shouse,
Co-Chairman
Dr. and Mrs. Charles Stanley White,
Co-Chairman
Mr. and Mrs. J. Scott Appleby, Jr.
Mr. and Mrs. Theodore Dominick
Mr. and Mrs. Edward R. Finkenstaedt
Mr. and Mrs. Carson G. Frailey
Dr. and Mrs. Gilbert Grosvenor
Mr. and Mrs. Nelson T. Hartson
Mr. and Mrs. Cecil D. Kaufmann
Mr. and Mrs. John Marshall
Mr. and Mrs. Samuel Spencer
Dr. and Mrs. W. Colton Stirling

Junior Hosts and Hostesses

Mr. and Mrs. Michael Gill,
Co-Chairman
Mr. and Mrs. Leo Howard Kerns,
Co-Chairman
Mr. and Mrs. Duane McDowell,
Co-Chairman
Mr. and Mrs. Edmund E. Pendleton, Jr.
Co-Chairman
Mr. and Mrs. George H. Buschmann
Mr. and Mrs. Richard Gill, Jr.
Mr. and Mrs. Richard S. T. Marsh
Mr. and Mrs. Barrington D. Parker
Mr. and Mrs. Charles R. Richey

Patrons and Patronesses

Dr. and Mrs. J. Breckinridge Bayne,
Chairman
Hon. and Mrs. Robert Woods Bliss
Hon. and Mrs. William S. Culbertson
Hon. and Mrs. George Angus Garrett
Mr. and Mrs. Frank R. Jelliff
Mr. and Mrs. Samuel H. Kaufmann
Capt. and Mrs.
Charles Hamilton Maddox
Mr. and Mrs. Curt C. Schiffler
Hon. and Mrs. Maurice H. Thatcher

Program

Fred L. Dixon, Chairman
Miss Catherine D. Scott, Co-Chairman
Miss Nancy Kipp
Mrs. Herman F. Scheurer, Jr.
Miss Barbara Spillinger
Miss Jill Whittemore
Mr. and Mrs. Robert E. Williams

Publicity

Pat Manopa, Chairman
Lloyd L. Herkins
Mrs. Roy E. James
Wiley O. Jones
Mrs. Arthur T. Lyon
J. Bernard McDonnell
Douglas G. Mede
Dr. Robert B. Pearson

Reception

Mrs. Alice Roosevelt Longworth,
Chairman
Mr. and Mrs. Floyd D. Akers,
Co-Chairman

Mr. and Mrs. James Curard Black,
Co-Chairman
Mr. and Mrs. Edward F. Colladay,
Co-Chairman
Mr. and Mrs. Emory A. Wheeler,
Co-Chairman

Safety

Maj. Gen. W. H. Aberdeeth,
Chairman

John J. Agnew, Vice Chairman
Col. Dean E. Cooley, Vice Chairman
Millard Sutton, Vice Chairman
Sherman Ackerman
Irving Berger
Morris Coltritz
A. R. Cies
Mrs. W. E. Denkle
Harold D. Fengbener
William H. Grass
George A. Parker
Mrs. Roger Robb
Jack Rogers
James G. Tyson
Philip H. Watts
J. Frankia Wilson

Security and Transportation

William Armstrong, Chairman
G. Del Bates
Mrs. Joel D. Blackwell
L. L. Braethover
Max A. Brogan
Miss Mary A. Buckler
Miss Marion E. Greenberg
Wayne G. Johnson
Joseph D. Kaufman
Mrs. Douglas C. Moore
Howard P. Moore
Richard J. O'Brien
Eugene H. Phifer
Mrs. William Piranian
Edward Rosenblum
Howard E. Thompson

Supper

J. Willard Marriott, Chairman
Mrs. Ralph E. Becker
Miss Ruth M. Brown
John H. Connaughton
Miss Mary Graves
J. Flipper Gericotte
Philip A. Guarino
Alfred McGarraghy
George M. Kivairo

Veterans

Hon. John Lewis Smith, Jr., Chairman
Chapin Bauman
T. Edward Braswell, Jr.
David C. Colladay
Norris A. Dodson
Mrs. Herman LeRoy Emmet, Jr.
Alfred Goldstein
Mrs. Arthur M. Hill
James Ellwood Jones, Jr.
Adelbert W. Lee
Claude Worthington Owen
Col. Robert L. Pollard
Kurt A. Smith
Mrs. Charles S. Thomas
Winfield Weitzel
Irving B. Yochelson

Young Republicans

Herman F. Scheurer, Jr., Chairman
Charles K. McWhorter, Co-Chairman
Donald R. Byrne
Miss Jane Case
Miss Shirley A. Camus
Val Choslowski
Mr. and Mrs. William B. Crouch
John Curtin
Mr. and Mrs. John A. Finken
Miss Joan Foreman
William Frawley
Miss Lucille Hertz
Mr. and Mrs. Edmund M. Jaskiewicz
Mr. and Mrs. Leonard A. Jaskiewicz
Walter L. Jubian
Marlin K. McDaniel
Mr. and Mrs. Julian B. McKay
Robert G. McCune
Mr. and Mrs. Patrick J. Ogden, Jr.
Samuel Portwine
Miss Janice Roberts
Del Smith
James Stenger

Inaugural Ball Staff

Mrs. Isla M. Benedict
James A. Blanchard, II

Mrs. Irene Harrison
Mrs. Fay Imhoff
Miss Jean Russ Kern
Miss Patricia Lilly
Louis Mettinger
Mrs. Mildred G. Patterson
Miss Jane M. Vide
Miss Janet Wright

INAUGURAL CONCERT

CLYDE B. GARRETT, Chairman
Carson G. Frailey, Vice Chairman
Ralph Black, Executive Secretary
Basil R. Liffin, Publicity Chairman
Mrs. Lawler B. Reeves,
Chairman, Ticket Sales
Ernest A. Tupper,
Vice Chairman, Ticket Sales

Floyd D. Akers
Andrew T. Altmann
Hon. Barry J. Anslinger
Hugh D. Auchinclose
Mrs. Robert Low Bocas
Mrs. J. Breckinridge Bayne
Mrs. Ralph E. Becker
Mrs. Peter Belin
Mrs. Robert Woods Bliss
Augusta Boas
Dr. Walter Willard Boyd
Thad H. Brown, Jr.
Mrs. Floyd Bryant
Mrs. Edward E. Burling, Jr.
Leo D. Butler
Hon. William R. Castle
Mrs. Cyrus S. Ching
Theodore Cogswell
Edward F. Colladay
Raymond E. Cox
Mrs. William S. Culbertson
Dr. Frederick J. Callen
Mrs. William Hooper Dayton
Fred J. Eden
Mrs. Wade H. Ellis
Mrs. Morton D. Finn
Mrs. George A. Garrett
Charles C. Glover III
Mrs. Joseph S. Harbison
A. Stedman Hills
Frank R. Jelliff
Eric Johnston
Mrs. Theophil Kemmholz
David B. Kerrick
Mrs. Milton W. King
Mrs. J. Noel Macy
Mrs. Charles Hamilton Maddox
Mrs. Harold N. Marsh
William McChesney Martin, Jr.
Archibald McLachlen
Lanier P. McLachlen
Harold G. Mosier
H. Gabriel Murphy
Gerson Nordlinger, Jr.
Claude W. Owen
Mrs. Neill Phillips
Mrs. Fletcher Plumley
Mrs. Merriweather Post
Lawler B. Reeves
M. Robert Rogers
Roy St. Lewis
James Edward Schaub
Mrs. Carl L. Shipley
Mrs. Jovett Shouse
Mrs. John F. Simmons
Gregory B. Smith
A. Burke Summers
A. Lloyd Symington
Mrs. DeForest Van Slyke
Mrs. Arthur W. Vennell
Mrs. William B. Willard
Hon. Orme Wilson

Ernest A. Tupper,
Vice Chairman, Ticket Sales
Floyd D. Akers
Andrew T. Altmann
Hon. Barry J. Anslinger
Hugh D. Auchinclose
Mrs. Robert Low Bocas
Mrs. J. Breckinridge Bayne
Mrs. Ralph E. Becker
Mrs. Peter Belin
Mrs. Robert Woods Bliss
Augusta Boas
Dr. Walter Willard Boyd
Thad H. Brown, Jr.
Mrs. Floyd Bryant
Mrs. Edward E. Burling, Jr.
Leo D. Butler
Hon. William R. Castle
Mrs. Cyrus S. Ching
Theodore Cogswell
Edward F. Colladay
Raymond E. Cox
Mrs. William S. Culbertson
Dr. Frederick J. Callen
Mrs. William Hooper Dayton
Fred J. Eden
Mrs. Wade H. Ellis
Mrs. Morton D. Finn
Mrs. George A. Garrett
Charles C. Glover III
Mrs. Joseph S. Harbison
A. Stedman Hills
Frank R. Jelliff
Eric Johnston
Mrs. Theophil Kemmholz
David B. Kerrick
Mrs. Milton W. King
Mrs. J. Noel Macy
Mrs. Charles Hamilton Maddox
Mrs. Harold N. Marsh
William McChesney Martin, Jr.
Archibald McLachlen
Lanier P. McLachlen
Harold G. Mosier
H. Gabriel Murphy
Gerson Nordlinger, Jr.
Claude W. Owen
Mrs. Neill Phillips
Mrs. Fletcher Plumley
Mrs. Merriweather Post
Lawler B. Reeves
M. Robert Rogers
Roy St. Lewis
James Edward Schaub
Mrs. Carl L. Shipley
Mrs. Jovett Shouse
Mrs. John F. Simmons
Gregory B. Smith
A. Burke Summers
A. Lloyd Symington
Mrs. DeForest Van Slyke
Mrs. Arthur W. Vennell
Mrs. William B. Willard
Hon. Orme Wilson

INAUGURAL PARADE

EDWARD R. CARR, Chairman
Clarence A. Arata, General
Vice Chairman
Robert A. Collier,
Vice Chairman, Floats
James P. Foley, Public Relations
Mrs. Mildred G. Lofland, Secretary
Mrs. Georganne Hendry, Secretary
Leon Chatelain, Jr.
Clarke Daniel
George M. Fuller
Donald Gingery
Arthur Gray
Edward J. Kelly
Austin Kenny
Reginald Martine
Charles N. Payne
Harold R. Robinson
Howard E. Thompson
Jay C. Turner
Langhorne Washburn

INAUGURAL STANDS

BRIG. GEN. THOMAS A. LANE,
Chairman
Lt. Col. Robert B. Mathe,
Vice Chairman
George A. England,
Executive Secretary

Construction

Alvin L. Aubino, Chairman
James A. Blaser
J. Slater Davidson, Jr.
Lt. Col. Thomas B. Hunter
Edward J. Kelly
Bernard F. Locraft
F. Morgan McConite
John Morrissey
Fred W. Tropp

Designs and Decorations

Leon Chatelain, Jr., Chairman
Harland Bartholomew
Grosvener Chapman
Roy E. Guard
Louis Justement
Thomas H. Locraft
Robert A. Wappner, Jr.

Finance and Budget

Everett J. Boothby, Chairman
E. Roy Dunn
Brig. Gen. Gordon R. Young (Ret.)

Inspection

Lt. Gen. Samuel D. Sturgis (Ret.),
Chairman
Cabell Gwathmey
Col. Thaddeus M. Nosek
Francis M. Tompkins

Insurance

John Remos, Chairman
Chester Gray
Schuyler Lowe

News Facilities

James B. Morrison, Chairman
Maj. Gen. Louis W. Prentiss (Ret.)
George E. Keneipp

Sanitary and Snow Removal

P. Y. K. Howat
David V. Auld
O. Roy Chalk
J. N. Robertson
Lt. Gen. Raymond Wheeler (Ret.)

INSURANCE

JOHN J. SIRICA, Chairman
Jules C. Ricker, Vice Chairman
James A. Cobb
Raymond A. DeFour
Richard W. Galther
Bernard M. Levy
Lisle T. Lipscomb
Schuyler Lowe
Lawrence J. Mills
Edward J. Rennie

LABOR PARTICIPATION

FRANCIS A. O'CONNELL,
Co-Chairman
C. F. PRELLER, Co-Chairman
Thomas Moran, Vice Chairman
J. F. Turner, Vice Chairman
Charles J. Bell
Miss Selma N. Borchardt
Mrs. Laura Brandon
Mrs. Hattie Dorfman
James C. Gildea
Mrs. Madge Giles
Charles S. Hill
F. H. McGuigan
John E. Martin
John L. Monaghan
H. E. Shanton
Ernest B. Spangler
W. F. Spangler
W. F. Strong
Leo Urbasik, Jr.

LAW AND LEGISLATION

JAMES C. WILKES, Chairman
Irving Bryan
Norman M. Glasgow
Andrew J. Graham
Ernest Henry
Alexander M. Haron
John F. Hillyard



SUB-COMMITTEES—INAUGURAL COMMITTEE 1957



William N. McLeod, Jr.
George A. Parker
Roger Robb
James Cunningham Rogers
Edward Rosenblum
James C. Wilkes, Jr.
Irving S. Yochelson

LIAISON OFFICER FOR PROTOCOL

JOHN F. SIMMONS, Chairman

MEDAL DESIGN

DAVID E. FINLEY, Chairman
Mrs. W. Randolph Burgess
Perry B. Cott
Mrs. John Clifford Folger
Mrs. G. Gordon Moore, Jr.
Mrs. Duncan Phillips
John Walker
Herman Williams

MEDAL DISTRIBUTION

GILBERT HAHN, JR., Chairman
Mrs. L. Corrin Strong, Vice Chairman
Mrs. Jean P. Sawyer, Executive Director
Mrs. Bette Carabin, secretary
Mrs. Betty Benzwingler, Secretary
Philip S. Bowie
B. Berner Burgunder, Jr.
Webb C. Hayes III
John W. Hechinger
Mrs. William A. Hepburn
Ernest S. Johnston
Miss Olive D. Kisman
Mrs. T. A. Nixewater

MEDICAL AID

MRS. B. LOWNDES JACKSON JR., Chairman
Dr. Ralph M. Caulk, Vice Chairman
Daniel Leonard, Vice Chairman
Dr. William B. Walsh, Vice Chairman
Mrs. Montgomery Blair
Dr. Leroy Surney
Adm. George W. Calver
Dr. V. T. DeVault
Dr. Claudine Gay
Maj. Gen. Silas B. Hays
Mrs. Francis Hildebrand
Rear Adm. Bartholomew W. Hogan
Dr. William Middleton
Dr. Emmett J. Murphy
Maj. Gen. Dan C. Ogle
Dr. Herbert P. Ramsey
Dr. Roy Lyman Sexton
Maj. Gen. Howard Seyder
Dr. S. Ross Taggart
Dr. Frank E. Wilson
Theodore Wiprud
Dr. Wallace Yater

NATIONALITIES PARTICIPATION AND LIAISON

PHILIP A. GUARINO, Chairman
C. K. Brown, Vice Chairman
William Darous, Vice Chairman
Paul G. Mazolis, Vice Chairman
Stephan J. Skubik, Vice Chairman
Colby Bowden, Executive Secretary

Advisory Committee

Method M. Balco
Walter Boehm
Dr. Lev Dobriansky
Stephen Gobozy
John T. R. Godlewski
Dmytro Halychyn
Joseph Jackovics
Chester Kowal
William T. Kvetkas
Leo J. Lamberson
George Mandikies
Col. Leon Nicolai
Thomas Pappas
Wilbur W. H. Pye
William Schwende
John J. Sirica
Col. Nicholas T. Stepanovich
Stephen Tkatch
Alexander L. Zivich

General

Frank Abbo
Dr. Onelan Astonovich
Sanford Bomstein

Charles Burke
Gusli Battinelli
Col. Serge Cheremetoff
Alfred Goldstein
Anthony Izzo
Prof. Tibor Kerekas
Al Lewis
Dr. Joseph A. Mikus
Mai Mon Ngoc
Peter Monocrossos
A. G. Penosian
Charles Saah
Robert Zosville
Leon Zeiger
Harry P. Zitelman

OFFICIAL INAUGURAL HOSTESSES AND HOSPITALITY

MRS. HOWARD ALDRIDGE COFFIN, Chairman

Honorary Vice-Chairmen

Mrs. Robert Woods Bliss
Mrs. Lewis T. Brunsinger
Mrs. Julia Grant Cantacuzene
Mrs. Edward L. R. Elton
Mrs. Robert V. Fleming
Mrs. Philip L. Graham
Mrs. Ulysses S. Grant, III
Miss Helen Hayes
Mrs. Samuel H. Kaufmann
Mrs. Carroll D. Kearns
Mrs. Nicholas Longworth
Mrs. Arthur MacArthur
Mrs. Benjamin M. McKelvey
Mrs. Eugene Meyer
Mrs. John T. O'Rourke
Mrs. Harlan Fiske Stone

Vice-Chairmen

Miss Bertha S. Adkins
Mrs. George E. Allen
Mrs. Marion Nailor Bailey
Mrs. J. Breckinridge Bayne
Mrs. W. Randolph Burgess
Mrs. William Foster Burdick
Mrs. Morris Caffitt
Mrs. Irene Caldwell
Mrs. Edward F. Colladay
Mrs. James L. Dixon
Mrs. Marcella Miller du Pont
Mrs. David E. Finley
Mrs. John Clifford Folger
Mrs. Clyde D. Garrett
Mrs. Peter Gibson
Mrs. Leonard W. Hall
Mrs. George Luzerne Hart, Jr.
Mrs. Hiram Cole Houghton
Mrs. B. Lowndes Jackson, Jr.
Mrs. Garfield J. Kass
Mrs. McCook Knox
Mrs. Harry Grant Meem
Mrs. George Gordon Moore
Mrs. Nell Phillips
Mrs. Merriweather Post
Miss Catherine D. Scott
Mrs. Carl L. Shipley
Mrs. A. Burks Summers
Mrs. Ida Smith Taylor
Mrs. Parker Whitney West
Mrs. Emory A. Wheeler
Mrs. J. Franklin Wilson

Liaison United States Senate Wives

Mrs. Styles Bridges
Mrs. Andrew Schoeppl
Mrs. J. Mark Trice

Liaison United States House of Representatives

Hon. Marguerite Stitt Church
Mrs. Richard Simpson
Mrs. Hugh Scott

Diplomatic

Mrs. Menche de Morgenstjerne
Señora Dona Lillian de Sevilla-Sacasa
Mrs. John F. Simmons

Military Forces

Mrs. Arthur W. Radford
Mrs. Nathan F. Twining
Mrs. Maxwell D. Taylor
Mrs. Arleigh Burke

Judiciary

Mrs. Homer Ferguson
Mrs. Joseph C. McGarraghy
Judge Mildred Reeves

Officials Government Departments

Hon. Ivy Baker Priest
Hon. Pearl Carter Pace

Independent Agencies

Mrs. George C. McConaghey
Mrs. Whitney Gilliland

District Government

Mrs. Robert E. McLaughlin
Mrs. David B. Karrick
Mrs. Samuel Spencer

The White House

Mrs. Floyd E. McCaffree

Official Inauguration Hostesses

Mrs. Timothy Peter Ambery
Mrs. Floyd Akers
Mrs. Samuel A. Alexander
Mrs. Edward L. Bacher
Mrs. James E. Bacon
Mrs. Bruce Baird
Mrs. Robert K. Beahan
Mrs. Ralph E. Becker
Mrs. Samuel Biddle
Mrs. Randolph G. Bishop
Mrs. James Cunard Black
Mrs. Montgomery Blair
Mrs. Millard Moore Bosworth
Mrs. Harry T. Bowers
Miss Kathryn Bowers
Miss Correlia Bowie
Mrs. Fred Bradley
Mrs. Frederick A. Brittes
Mrs. Charles W. O. Busker
Miss Ruth M. Brown
Mrs. Edward Barling, Jr.
Mrs. Clark Butler
Mrs. Peter Cameron
Mrs. Edward R. Carr
Mrs. Blair Childs
Mrs. David C. Colladay
Mrs. Mark H. Cornell
Mrs. Esther C. Costa
Mrs. Ann B. Cobb
Mrs. James A. Councilor, Sr.
Mrs. Thomas Richard Cowell
Mrs. William Smith Culbertson
Mrs. William Hooper Dayton
Mrs. J. Flipper Derricotte
Mrs. Alexis Doster
Mrs. J. Gordon Douglas
Mrs. J. Hunter Drum
Mrs. Ruth Dudley
Mrs. Willard Edwards
Mrs. Wade Hampton Ellis
Mrs. Newell W. Ellison
Mrs. Herman LeRoy Emmet, Jr.
Miss Meta Morris Evans
Mrs. Violet K. Faulkner
Mrs. Harold Everett Fellows
Mrs. Robert W. Fleming
Mrs. James P. Fowler
Mrs. Arthur A. Fuller
Mrs. George M. Fuller
Mrs. Bernard J. Gallagher
Mrs. Julian E. Gillespie
Mrs. Alfred Goldstein
Mrs. Ann Dodge Goodbee
Miss Louise Gore
Mrs. Gilbert Grosvenor
Mrs. M. Robert Guggenheim
Mrs. L. Richard Guxley
Mrs. Randall H. Hagner
Mrs. Gilbert Hahn, Jr.
Mrs. John N. Hamlin
Mrs. Paul H. Hatch
Mrs. A. B. Hermann
Mrs. Shedman Hill
Mrs. Francis W. Hill, Jr.
Miss Lena Hitchcock
Mrs. Henry Holland
Mrs. Edward McKinsey Hunt
Mrs. Joseph Straub Harbison
Mrs. Roy James
Mrs. Alice Frel Johnson
Mrs. Roger Johnson
Mrs. David B. Karrick
Mrs. John Morrison Kerr
Mrs. Harold A. Kertz
Mrs. Edward Allen Keys
Mrs. Julia B. Kirlin
Mrs. Huron W. Lawson
Miss Faye Lewisohn
Miss Emma Parley Lincoln
Mrs. G. Gould Lincoln
Mrs. Corwin R. Lockwood, Jr.
Mrs. A. Lathrop Luttrell
Mrs. Robert E. McLaughlin
Mrs. William P. MacCrocken
Mrs. Harry MacDonald
Mrs. Charles Hamilton Maddox
Mrs. J. Willard Marriott
Mrs. John Marshall
Mrs. John Marshall, Jr.
Mrs. Harold N. Marsh
Mrs. William Beverly Mason

Mrs. Logan Morris
Mrs. Harold Mosier
Mrs. Lee Andrew Murphy
Mrs. J. Leg Murphy
Mrs. Martin I. Murphy
Miss E. Pauline Myers
Mrs. Frederick E. Nash
Mrs. Urban Niblo
Mrs. Henry Norair
Mrs. Leo Brison Norris
Mrs. Barrington Parker
Mrs. Fletcher D. Plumley
Mrs. Harry E. Polk
Mrs. W. Royce Powell
Mrs. James H. Paroy
Miss Doris Fielding Reid
Mrs. Eugene H. Rietke
Mrs. Floyd Sterling Rogers, Jr.
Mrs. Higginson Rogers
Mrs. Joseph E. Ruttkay
Mrs. Roy St. Lewis
Mrs. Herman Scheurer, Jr.
Mrs. Carolyn Hagner Shaw
Mrs. Daniel W. Shields
Mrs. Paul E. Sherb, Jr.
Mrs. John J. Sirica
Mrs. John Lewis Smith, Jr.
Mrs. J. Robert Smith, Jr.
Mrs. Ray E. Smith
Mrs. James Martin Souby
Mrs. Samuel Spencer
Mrs. Persifer G. Spitsbury
Mrs. Calhoun Sterling
Mrs. John Shickley
Mrs. Edward C. Sweeney
Miss Rebecca Swape
Mrs. Charles M. Thomas
Mrs. Merle Thorpe, Sr.
Mrs. John Topp
Mrs. Edward Russell Truss, Jr.
Mrs. John Walker, III
Mrs. Dorothy Lee Ward
Mrs. Frank E. Weakly
Mrs. G. Louis Weller
Mrs. Anne Wheaton
Mrs. George Y. Wheeler, II
Mrs. Charles Stanley White
Mrs. Douglas Whitlock
Mrs. James C. Wilkes
Mrs. Wesley Williams
Mrs. Yvonne Poe Wilson
Miss Rose Mary Woods
Mrs. William E. Wrathier
Mrs. J. J. Wuerthner, Jr.
Mrs. Whitney Young
Mrs. Ellis A. Yost
Mrs. Rose Saul Zalles
Mrs. Henry J. Ziegemeir

Official Junior Inauguration Hostesses

Miss Barbara Botsch
Mrs. George K. Brobeck, Jr.
Miss Ann Campbell
Miss Margaret Du Fief
Miss Joan M. Foreman
Miss Bernadette Gannon
Mrs. Michael D. Gill
Miss Virginia Hines
Miss Joyce Huff
Miss Nancy Anne Kipp
Miss Nell E. MacCrocken
Mrs. Edmund Pendleton
Miss Roberts Van Beck
Miss Helen G. Wheeler
Mrs. James C. Wilkes, Jr.
Miss Sandra Winne
Miss Jill Whitehead

Deb and Sub Deb Hostesses

Miss Ellen Moore, Chairman
Miss Mamie Moore, Vice Chairman
Miss Ruth Eisenhower
Miss Ann Brownell
Miss Beverly Benson
Miss Josephine Black
Miss Bethina Brown
Miss Ann Walsh Dulles
Miss Deborah Drum
Miss Ellen Dayton
Miss Elizabeth Fulbright
Miss Joan Goldwater
Miss Emily Beale McLean
Miss Patricia McMahon
Miss Judith Nash
Miss Lavinia Plumley
Miss Dale Rogers
Miss Jane Wigglesworth
Miss Mary Elizabeth Young
Miss Eleanor McConehe
Miss Ann Kauffmann

The Pan American Union Reception For Distinguished Women

Mrs. Howard Aldridge Coffin, Chairman



SUB-COMMITTEES—INAUGURAL COMMITTEE 1957



Mrs. J. Clifford Folger, Asst. Chairman
Mrs. J. Breckinridge Bayne
Mrs. Arthur A. Fowler
Mrs. Leonard W. Hall
Mrs. Garfield I. Kass
Mrs. Benjamin McKelway
Mrs. William P. MacCracken
Mrs. Thomas E. Stephens
Mrs. Merle Thorpe, Sr.
Mrs. Parker West
Mrs. Whitney Young

Tickle-Lish

Mrs. William Hooper Dayton, Chairman
Mrs. Urban Niblo
Miss Rebecca Swope

Coordinating

Mrs. Harry Grant Meem, Chairman
Mrs. John Marshall
Mrs. Floyd S. Rogers, Jr.
Mrs. Paul Shorb
Mrs. William E. Wreather

Arrangements

Mrs. Parker Whitney West
Mrs. Floyd D. Akers
Mrs. Marion Naylor Bailey
Mrs. Morris Cafritz
Mrs. J. Hunter Drum
Mrs. B. Lowages Jackson, Jr.
Mrs. Robert C. Jones
Mrs. A. Lothrop Luthrell
Mrs. Charles Hamilton Maddox
Mrs. Fletcher Plumley
Mrs. Merriweather Post

Art Galleries and Twilight

Concerts

Mrs. John Walker, III, Chairman
Mrs. David E. Finley, Asst. Chairman
Mrs. David B. Kirtick
Mrs. McCook Knox
Mrs. Harlan Fiske Stone
Mrs. Herman W. Williams, Jr.
Mrs. Robert Woodliff
Mrs. Leonard Carmichael
Mrs. James Denby
Mrs. Wayne C. Grover
Mrs. George Hewitt Myers
Mrs. L. Quincy Mumford
Mrs. Dancan Phillips
Mrs. Robert Richman
Mrs. Archibald G. Wesley
Mrs. Louis Wright

Budget

Mrs. Robert K. Beahm
Miss Ruth M. Brown
Mrs. Ann Cole
Mrs. John Morrison Kerr

Church Hospitality

Mrs. Montgomery Blair
Mrs. Edward L. R. Elson
Mrs. Anne Dodge Goodbee
Mrs. Garfield I. Kass
Mrs. Ida Smith Taylor

Embassies Hospitality

Mrs. W. Randolph Burgess, Chairman
Mrs. M. Robert Guggenheim, Vice Chairman
Miss Elizabeth A. Burton, Secretary
Mrs. Wiley T. Buchanan, Jr.
Mrs. Harold Coolidge
Miss Meta M. Evans
Mrs. Charles Finucane
Mrs. Reginald Foster
Mrs. George M. Fuller
Mrs. Randall Hagner
Mrs. Henry Holland
Mrs. Roger Johnson
Mrs. Thomas Kirkaid
Mrs. Curtis Munson
Mrs. William P. MacCracken
Mrs. Neill Phillips
Mrs. Merriweather Post
Mrs. Lawrence B. Robbins
Mrs. John Farr Simmons
Mrs. Samuel Spencer
Mrs. Rose Saul Zalles

Guide Book

Mr. Fred L. Dixon, Co-Chairman
Mr. James E. Bacon, Jr., Co-Chairman
Mrs. Daniel W. Shields, Asst. Chairman
Mr. Donald J. Tubridy
Miss Virginia Hines
Miss Sandra Wiane

Hospitality Liaison with the Festival

Mrs. Robert W. Fleming
Mrs. Michael Gill
Miss Nell MacCracken
Mrs. William Beverly Mason
Mrs. John Sirica

Official Welcoming and Information Booths

Mrs. Irene B. Caldwell, Chairman
Mrs. Robert E. McLaughlin, Vice Chairman
Mrs. George E. Allen, Vice Chairman
Mrs. Edward Burling, Jr., Vice Chairman

Mrs. Clark Butler, Vice Chairman
Mrs. Alfred Goldstein, Vice Chairman
Mrs. George E. Green, Vice Chairman
Miss Catherine Scott, Vice Chairman
Mrs. Frank Weakly, Vice Chairman
Mrs. Everett W. Abdill
Miss Lucille L. Aird
Mrs. Timothy Peter Ansberry
Miss Georgina Bailey
Miss Mary Bakshian
Mrs. Ralph E. Becker
Miss Lenore Beckington
Mrs. Samuel Biddle
Mrs. Harry Bowers
Miss Kathryn Bowers
Miss Millard Bosworth
Miss Barbara Bolsh
Miss Gail Brinkman
Miss Elizabeth A. Brinkman
Miss Ciyolene Bush
Miss Luella Chase
Miss Ann Cecilia Campbell
Mrs. Esther C. Costa
Mrs. Ann B. Cote
Mrs. Thomas R. Cowell
Mrs. Darrin Crane
Mrs. John Cross
Mrs. William S. Culbertson
Mrs. Meredith Cushman
Mrs. J. Gordon Douglas
Mrs. J. Hunter Drum
Mrs. W. Earle Duke
Miss Margaret Du Rief
Mrs. Fred L. Baker
Mrs. Herman LeRoy Emmet, Jr.
Miss Nanette Emery
Miss Ann Farcasin
Mrs. Alan Ferguson-Warren
Mrs. George Fleming
Miss Joan M. Foreman
Miss Alice Freer, Jr.
Miss Bernadette Garson
Miss Margaret A. Gerli
Mrs. Michael D. Gill
Miss Elizabeth Gillbanks
Mrs. Juliana Gillespie
Mrs. Whitney Gilliland
Mrs. Ann Dodge Goodbee
Mrs. G. E. Griggs
Mrs. Joseph S. Harbison
Mrs. John B. Harvey
Mrs. Aice Helm
Miss Virginia Hines
Mrs. George W. Hinman
Mrs. William D. Hitabidle
Miss Lena Hitchcock
Miss Joyce Huff
Mrs. James McKinley Hunt
Mrs. Robert W. Imbrie, Jr.
Mrs. Robertson Marshall
Mrs. Donald L. Jenkins
Miss Janice Johnson
Mrs. Kether Johnson
Mrs. Lambert Jones
Mrs. Frederick T. Keamans
Miss Marthejane Kennedy
Mrs. Harold A. Kertz
Miss Nancy Anne Kipp
Mrs. S. E. W. Kittelle
Mrs. William Klaus
Mrs. Marguerite Kochenderfer
Miss Agnes Katsrumbis
Mrs. James F. Lowery
Mrs. Huren W. Lawson
Mrs. William R. Leckamby, Jr.
Mrs. Wilmot Lewis, Jr.
Mrs. J. Noel Macy
Mrs. Joseph C. McGarraghy
Miss Nell E. MacCracken
Mrs. Cecil M. MacGregor
Mrs. William P. McClure
Mrs. Grace McRay
Mrs. John Marshall, Jr.
Mrs. Robertson Marshall
Mrs. William Beverly Mason
Miss Margaret May
Miss Fred R. Miller
Mrs. Douglas Mode
Mrs. Ralph Coolidge Mulligan

Mrs. Lee Andrew Murphy
Miss E. Pauline Myers
Mrs. Urban Niblo
Mrs. Leo William Nilon
Mrs. Henry Norair
Mrs. Leo Brison Norris
Mrs. Edmund Pendleton
Mrs. Fletcher D. Plumley
Miss Mary Stuart Montague Price
Miss Carol Raymond
Mrs. Eugene Rietzke
Mrs. V. J. Roofnyder
Miss Janice Roberts
Mrs. Paul E. Shorb, Jr.
Mrs. Walter A. Simon
Mrs. John J. Sirica
Mrs. J. Robert Smith, Jr.
Mrs. James Martin Sosby
Mrs. Calhoun Sterling
Mrs. William L. Taylor
Mrs. Thomas Thompson
Miss Roberta Van Beek
Mrs. Kathleen Dowd Watson
Mrs. Henry Weeks
Mrs. G. Louis Weller
Mrs. Harry J. Wheaton
Miss Helen G. Wheeler
Miss Jill Whittemore
Mrs. James C. Wilkes
Mrs. Yvlla Poe Wilton
Miss Sally Wilkinson
Miss Sandra Winsor
Mrs. Lloyd G. Wolfe
Mrs. G. Lynn Woodruff
Mrs. Edward W. Wootton
Mrs. William E. Wreather
Mrs. Henry J. Ziegemeir

Liaison Hostesses

Mrs. Paul H. Hatch, Chairman
Mrs. Alfred Goldstein
Mrs. Esther C. Costa
Mrs. John Dismore
Mrs. Faith Gwynne Fisher
Mrs. John N. Hamlin
Mrs. Corwin Lockwood
Mrs. Douglas Whitlock

Hospitality Liaison

Transportation
Mrs. Frederick E. Nash, Chairman
Miss Ciyolene Bush
Mrs. Eugene H. Rietzke

Hospitality Press Liaison

Mrs. Alice Frelin Johnson
Miss Violet K. Foulkner
Mrs. Anne Wheaton

OFFICIAL PROGRAM

HARRY L. MERRICK, Chairman
Gerald F. Price, Vice Chairman
Bruce Bryan
Raul Blumberg
E. J. DeVore
Alvin Q. Ehrlich
William N. Freeman
Harry Gladstein
Norman C. Kal
R. F. Mack
Paul Matthews
Victor H. Ottenstein
George R. Titus

PARADE TICKETS

JOHN TOPE, Chairman
John Morrissey, Vice Chairman
Charles Egan
Miss Lynn Gerli
Mrs. Jane Prather

PUBLIC HEALTH AND SANITATION

DR. DANIEL L. SECKINGER, Chairman
Walter W. Bardette, Vice Chairman
Dr. Frederick C. Heath, Vice Chairman
William A. Xanten, Vice Chairman
David V. Auld, Chairman, Subcommittee on Public Convenience Stations
William M. Bucher, Chairman, Subcommittee on Hospital Facilities
Walter W. Bardette, Chairman, Subcommittee on Food Precautions and Supervision
William H. Cary, Chairman, Subcommittee on Badges, Insignia and Emergency Regulations

E. Milton Dulis, Chairman, Subcommittee on Housing Sanitation
John A. Reed, Chairman, Subcommittee on D. C. Emergency Ambulance Service
William A. Xanten, Chairman, Subcommittee on Pullman Housing
David V. Auld
William E. Bowman
Rudolph R. Bertel
Dr. Ralph G. Beachley
William M. Bucher
Colonel William H. Cary
E. Milton Dulis
Dr. Thomas S. Englar
Dr. Daniel L. Fanciane
Maj. Gen. Leonard D. Heaton
Norbert Melick
Dr. William J. Peoples
Joseph P. Prescott
Harry Shaw
A. Clarke Slaymaker
Dr. S. Ross Taggart
Dr. William N. Wooldridge

PUBLIC SAFETY

CHIEF ROBERT V. MURRAY, Chairman
Deputy Chief John J. Agnew
Deputy Chief Robert S. Bryant
Deputy Chief William J. Cunningham
Deputy Chief Clarence H. Lutz
Deputy Chief Edgar E. Scott
Deputy Chief George R. Wallrodt
Inspctr. Loraine T. Johnson,
Liaison Officer to the Inaugural Com.
Lt. Carol L. Kratochwil, Secretary

Cables and Barricades

Young J. Wright, Chairman
William A. Collis
George E. Hess
Edgar S. Walker

Capitol

Chief Robert C. Pearce, Chairman
Inspctr. Henry H. Heflin
Capt. Jeremiah F. Flaherty

Permits and Passes

Inspctr. Robert D. Chensault, Chairman
Capt. Albert L. Embroy
Capt. John B. Layton
Lt. Ashley A. Aderholdt

Traffic

George E. Keneipp, Chairman
Wallace L. Braun
John H. Milton

U. S. Parks

Chief Harold F. Stewart, Chairman

White House

U. E. Baughman, Chairman
James M. Beary

RECEPTION OF GOVERNORS AND DISTINGUISHED GUESTS

Executive

EDWARD F. COLLADAY, Chairman
William J. McMasus, Exec. Vice Chairman
Walter D. Goodrich, Assistant to Chairman
Mrs. Wm. Hooper Dayton, Secretary
Miss Ruth M. Brown, Asst. Secretary
Joseph E. Fitzpatrick, Treasurer

Vice Chairmen and Advisory

Mrs. Anne Archibald
Mrs. Montgomery Blair
Herbert C. Blusck
O. Roy Chalk
James A. Cobb
Mrs. Howard A. Coffin
Harry Davidson
J. Flipper Derricotte
Norris A. Dodson
Charles B. Dulcan, Sr.
Mrs. Francis V. duPont
Clyde D. Gerritt
Mrs. M. Robert Guggenheim
Nelson T. Hartson
Mrs. Paul H. Hatch



SUB-COMMITTEES—INAUGURAL COMMITTEE 1957



Planning and Decorations

Henry N. Boucher, Chairman
 Hugh N. Fleming, Vice Chairman
 Albion A. Blaks
 Carl Dodge
 Leon Gibbs

Protocol

Robert C. Hill, Chairman
 Thad H. Brown, Jr., Vice Chairman
 Wiley Buchanan

General

Francis G. Addison, Jr.
 Vincent P. Ahearn
 Dr. Hursel R. Anderson
 T. Peter Arsberry
 Mrs. Carol Arth
 Hugh D. Auchincloss
 Mrs. Hugh D. Auchincloss
 Mrs. James Austin
 Edward A. Bacon
 Mrs. Robert Low Bacon
 Robert C. Baker
 Miss Mary Bakshian
 Willis J. Ballinger
 Mrs. J. Breckinridge Boyne
 Mrs. Robert Beahan
 Ralph E. Becker
 Mrs. Dorothy P. Beckley
 C. F. Bell
 William T. Bell
 Mrs. Irving D. Berger
 Harry P. Bergmann
 Theodore Bernier
 Mrs. James T. Berryman
 James T. Berryman
 Samuel Biddle
 Halbert T. Bisselle
 James C. Black
 Joel D. Blackwell
 Dr. Montgomery Blair
 Clarence J. Baker
 E. Goring Bliss
 Mrs. George Waller Blow
 Herbert C. Blunck
 Howard Booher
 Everett J. Boothby
 Mrs. Ellington Botts
 Miss Laura Boulton
 Miss Joyce L. Bovik
 Mrs. Harry W. Bowers
 Miss Kathryn E. Bowers
 Frederick M. Bradley
 L. L. Braithover
 Mrs. L. L. Braithover
 Mrs. Fred A. Britton
 Rear Admiral Maurice E. Browder
 Leon Brullhoff
 Mrs. Wiley T. Buchanan, Jr.
 William A. Buchanan
 Mrs. Henry Buckardt
 Mrs. William F. Burdick
 Robert H. Burkart
 Clarence F. Burton
 Thomas A. Butt
 Donald R. Byrne
 Dr. Edward Caffritz
 Charles A. Camalleri
 Mrs. Avis J. Carter
 Miss Jeannette Carter
 James A. Cassidy
 Dr. Philip A. Caulfield
 Aloys E. Chaffee
 Samuel Charlesworth
 Mr. F. A. Chidsey
 Blair Childs
 Mrs. Reginald E. Clark
 George C. Clarke
 Mrs. H. Alvin Cline
 Mrs. David C. Colladay
 Mrs. Edward F. Colladay
 Mrs. Stephen F. Colladay
 James E. Colliflower
 Henry J. Conner
 William W. Connor
 Albert E. Cozzadis
 Dr. Robert F. Costello
 James R. Crook
 Edward B. Crosland
 Orville Crouch
 Mrs. Vera Cudmore
 Mrs. William S. Culbertson
 Major Henry M. Cunningham
 Col. Charles C. V. Cushman
 Mrs. Aloysius Darling
 Mr. W. Hooper Dayton
 Harry Dean
 Harry A. deBuffs
 John D. deBuffs
 Charles Delmar
 Mr. Andre deLimur

Andrew L. Devlin
 Victor B. Deyber
 Clark G. Diamond
 Mrs. Ethel Dickey
 Fred L. Dixon
 Mrs. Thurman L. Dodson
 Cornelius H. Doherty
 William B. Dolph
 Theodore W. Dominick
 Mrs. J. Gordon Douglas
 Charles D. Drayton
 Mrs. Charles B. Dulcan, Sr.
 R. Roy Dwin
 Thomas L. Eagan
 John R. Eakin
 James B. Edmunds
 Mrs. Willard Edwards
 Mrs. Barbara Essinger
 Mrs. Wade H. Ellis
 Mrs. Henry Parsons Erwin
 Mrs. Grace Mayo Evans
 John K. Evans
 Joshua Evans, Jr.
 Mrs. Warren T. Faircloth
 William T. Faricy
 Melvis M. Farr
 John A. Finken
 Edward R. Finkenstaedt
 Miss Janet Fish
 Mrs. Faith Gwynne Fisher
 William J. Fletcher, Jr.
 R. V. Fletcher
 Stephan H. Fletcher
 Mrs. Henry Doloman Flood
 Eustace L. Florence
 James D. Foley
 Miss Joan Foreman
 George A. Frediani
 Mrs. Bessie Mercer Freeman
 James M. Freeman
 Robert E. Freer
 Mrs. Stuart G. Fris
 Norman B. Frost
 Earl H. Gammons
 Mrs. Leland G. Gardner
 Clyde D. Garrett
 Mrs. Clyde D. Garrett
 Raymond F. Garrity
 Oliver Gasch
 James L. Gibbons
 James McM. Gibson
 Michael David Gill
 Mrs. Leslie Glenn
 Charles C. Glover, Jr.
 Charles C. Glover III
 Mrs. Alfred Goldstein
 Col. Julius Goldstein
 Edgar J. Goodrich
 George Goodrich
 Mrs. Walter D. Goodrich
 Miss Louise Gore
 Clarence W. Gosnell
 Phillip L. Graham
 Sidney Graves
 Mrs. Sidney Graves
 Mrs. Charles B. Gray
 Gilbert H. Grosvenor
 Harry C. Grove
 Granville Guide
 Frederick J. Haas
 Mrs. Randall H. Hagner
 Randall H. Hagner, Jr.
 Gilbert Hays, Jr.
 Richard B. Hall
 Charles Hamel
 George E. Hamilton, Jr.
 Mrs. Julia West Hamilton
 Frank Hanighan
 P. A. Hanigan, Jr.
 Mrs. Joseph Staub Harbison
 Edward T. Harding
 Rev. Frederick Brown Harris
 George C. Harris
 Col. Leland Harrison
 Col. George L. Hart, Jr.
 Barge L. Hartz
 Dr. Paul H. Hatch
 Paul M. Hawkins
 Ann E. Hayler
 George E. C. Hayes
 Dr. Michael M. Healy
 Mrs. Alfred Heiberg
 Lucille Hertz
 Frederick A. Hessick
 Mrs. Arthur M. Hill
 Robert Hill
 Arthur J. Hilland
 John F. Hillyard
 Miss Lena Hitchcock
 Dean Holt
 Mrs. Dean Holt
 Rev. J. L. S. Holloman
 Rev. J. Hillman Hollister
 Alfred V. Holmes
 James M. Hood

George A. Horkos, Jr.
 H. Peyton Howard, Jr.
 A. C. Houghton
 Harry Jaftle
 Leonard A. Jaskiewicz
 Coeman Jennings
 Charles H. Jerman
 Nelson T. Johnson
 James M. Johnston
 Vernon A. Johnson
 Mrs. Isabelle McCoy Jones
 Wiley O. Jones
 Karl F. Joss
 Dr. Helen Gladys Kain
 David B. Karrick
 Mrs. Garfield I. Kass
 Mrs. Joseph D. Kaufman
 Cecil D. Kaufman
 Samuel H. Kaufman
 Abraham S. Kay
 Clarence E. Kefauver
 Clyde E. Kellogg
 Mr. L. Howard Kern
 Adm. Thomas C. Kiscald
 Milton W. King
 Miss Nancy Kipp
 Mrs. Katherine McCook Knox
 Lt. Gen. Lawrence S. Kuter
 Gilbert G. LaGorce
 John Oliver LaGorce
 Brig. Gen. Thomas A. Lane
 Mrs. Thomas A. Lane
 Dr. John Latimer, Jr.
 Alfred H. Lawson
 Robert A. Leamard
 Mrs. William Leatch
 Dr. Alexander Leonard
 George A. Levitt
 Dr. Lloyd Lewis
 Mrs. Roosa Lewis
 Albert W. Lewitt
 Luther W. Linkins
 Benjamin H. Littleton
 Mrs. Demarest Lloyd
 Harold Allen Long
 J. Stanley Long
 Frank J. Lucks
 Rufus S. Lusk
 Mrs. Arthur MacArthur
 Bowma MacArthur
 Miss Nell MacCracken
 Mrs. William P. MacCracken
 Dr. A. Magruder MacDonald
 Donald F. MacKenzie
 M. C. MacKinnon
 John E. McClure
 Robert C. McCana
 F. Moran McConite
 Frank J. McCarthy
 Robert G. McCune
 Marlin K. McDaniel
 Alfred McGarraghy
 Mrs. Joseph C. McGarraghy
 Mr. Julian B. McKay
 B. M. McKelway
 Lanier P. McLachlen
 Archibald McLaughlin
 Archibald McLachlen
 George L. McMorris
 Howard E. McPeck
 Charles K. McWhorter
 Frederick G. Macarow
 Howard W. Macy
 J. Noel Macy
 H. Randolph Maddox
 Charles P. Maloney, Sr.
 H. Wells March
 Melvin J. Marques
 Richard S. T. Marsh
 Fred T. Marshall
 John Marshall
 John Marshall, Jr.
 Dr. Cloyd Heck Marvin
 Frank May
 Francis P. May
 Richard G. May
 Calvert C. McCabe, Jr.
 Hugh McGowan
 Mrs. Edward D. Merrill
 Vice Adm. Charles B. Morrison
 James B. Morrison
 Robert W. Michie
 Davidson C. Miller
 Reburn Miller
 Harry D. Mitchell
 Mrs. Jess Mitchell
 Douglas C. Moore
 Mrs. Douglas C. Moore
 L. Gardner Moore
 Charles Carroll Morgan
 Dr. Felix Morley
 Joseph R. Morris
 Ned Morris
 J. B. Morrison
 Godfrey L. Muster

J. Willard Nails, Sr.
 Frederick C. Nash
 Alfred G. Neal
 Dr. Julius S. Neviasser
 Blake T. Newton, Jr.
 W. O. Nicholls
 Patrick J. Ogden
 Stuart S. Ogilvie
 Dr. A. Harry Ostrow
 Claude W. Owen
 Henry S. Oweas
 J. Mitchell Owens
 Andrew Parter
 Barrington Parker
 Mrs. George A. Parker
 L. M. Parsons
 Harold O. Payne
 Dr. Robert B. Pearson
 Edmund E. Pendleton, Jr.
 James F. Perrin
 Eugene H. Philfer
 Rear Adm. Neil Phillips
 Landra B. Platt
 Mrs. Fletcher P. Plumley
 Harry E. Polk
 Dr. Andrew Prandoni
 E. Barrett Prattman
 Robert L. Pritchard
 Dr. Maurice Protos
 George M. Quirk
 Thomas M. Rayson
 John A. Reilly
 Lawrence Richey
 Mrs. B. W. Richwine
 Rear Adm. Charles E. Riggs
 William H. Rippard
 Mrs. Floyd S. Rogers, Jr.
 Mrs. Jack Rogers
 William Rogers
 Hon. Leo A. Rorer
 Harry L. Ruit, Jr.
 Roy St. Lewis
 Bernard F. Saul, Jr.
 Victor O. Schinnerer
 Mrs. Herman F. Scheurer
 Col. William E. Schooley
 James E. Schwab
 Mrs. William A. Scully
 Charles E. Sener, Jr.
 C. Melvin Sharpe
 William C. Shelton
 Donald D. Shepard
 Frederick P. H. Siddons
 Fred A. Smith
 John Lewis Smith, Jr.
 Mrs. J. Robert Smith, Jr.
 Robert Ellsworth Smith
 Robert T. Smith
 Bernard V. Somers
 Mrs. James M. Souby
 Dr. A. L. Spencer
 Samuel Spencer
 Lester H. Steinem
 Mrs. T. Lofthrop Stoddard
 Waide B. Stringham
 Mrs. L. Corrin Strong
 Harry N. Strull
 Mark Sullivan, Jr.
 Arthur J. Swadlow
 Mrs. Annie Laura Swartz
 Edward Claveland Swaney
 Miss Rebecca LeFerre Swape
 Richard N. Talianero
 Mrs. Robert Lee Taylor
 Brig. Gen. John Thomas Taylor
 Maurice H. Thatcher
 Carconan Thom, Jr.
 Charles M. Thomas
 Walter G. Thomas
 Mrs. Merle Thorpe
 Merle Thorpe, Jr.
 Mrs. Nicholas I. Troskoff
 Ernest H. Van Fossan
 H. Holmes Vogel
 Robert A. Walker
 William H. Wannell
 Wilmer J. Waller
 Mrs. Winfield Weitzel
 Millard F. West, Jr.
 Mrs. Douglas Whitlock
 Martin T. Wiggand
 James C. Wilkes
 Mrs. John F. Wilkins
 John H. Wilkins, Jr.
 Robert E. Williams
 Wesley S. Williams
 Mrs. J. Franklin Wilson
 Lloyd B. Wilson
 Mr. and Mrs. Ormo Wilson
 Robert W. Wilson
 William R. Winslow
 Ernest S. Wollen
 Mrs. Jorge E. Zalles
 Mrs. H. Jewel Ziegemeir



SUB-COMMITTEES—INAUGURAL COMMITTEE 1957



RELIGIOUS OBSERVANCE

THE RT. REV. ANGUS DUN,
Co-Chairman
REV. DR. EDWARD L. R. ELSON,
Co-Chairman
DR. NORMAN GERSTENFELD,
Co-Chairman
MOST REV. PATRICK A. O'BOYLE,
Co-Chairman
RABBI TZVI H. PORATH,
Co-Chairman
REV. ALBERT P. SHIRKEY,
Co-Chairman

Bishop Philip M. Hanna
Rev. Ward Hurlbutt
Bishop G. Bremley Osnam

STATE SOCIETIES PARTICIPATION

JACK SPAIN, Chairman
Miss Catherine M. Flynn, Vice-Chairman

Clayton Gasque, Vice-Chairman
Charles A. Henderson, Treas.
Ralph Dens, Assistant Treasurer
Miss Charlotte A. Marr, Sec'y.
Miss Phemie Miller, Assistant Sec'y.
Bernard V. Somers, Vice-Chairman
Mrs. Ellen Woodward, Historian
Mrs. Esther Costa
Mrs. Paul Hatch
Sigvard Anderson, South Dakota
Arthur E. Angel, New Mexico
Omar Ketches, Kansas
Frank Borecivich, Oregon
John S. Bertlett, Ohio
Miss Mary Bartsch, Nevada
Jose Boris, Guam
Felix M. Broussard, Louisiana
Robert Brumback, Virginia
John R. Butt, Colorado
William R. Clay, Maryland
Philip Cohen, New Hampshire
William R. Cosnole, Connecticut
Basil P. Cooper, Kentucky
Jack O. Crawford, Mississippi
John A. Delaney, Pennsylvania
Mrs. Joseph R. Farrington, Hawaii
Joseph F. Flake, Washington
Miss Marie Flanagan, Rhode Island
Stephen H. Fletcher, Utah
Edward C. Gaertner, Indiana
W. H. Gilmore, Ohio
Amos T. Hafner, Vermont
Roy C. Haines, Maine
Zola B. Hyde, Oklahoma
Fred L. Kaye, New York
Robert Kelley, Delaware
James Key, West Virginia
Melvin R. Laird, Wisconsin
John A. Lang, Jr., North Carolina
Miss Charlotte Marr, Illinois
Sen. Thomas E. Marlin, Iowa
Mac A. Hollibaugh, Arkansas
Samuel D. McEllwain, Mississippi
Thomas McGregor, Alabama
Mr. Dale Miller, Texas
Cong. Robert Ashmore, South Carolina
Walker T. Phair, California
Mr. John L. Risher, Georgia
J. D. Cy Price, Idaho
F. M. Radigan, Michigan
Brig. Gen. Louis H. Renfrow, Missouri
Heber H. Rice, Kentucky
Ray Schafer, North Dakota
Lawrence Schoewe, Montana
James G. Sharon, Florida
James G. Sharp, Oregon
Mike Macitis, Wyoming
John K. Slear, North Carolina

Rufus Stehoo, Jr., Maine
Walter W. Stevens, Massachusetts
Henry J. Sullivan, Jr., Minnesota
Warren E. Van Norman, Nebraska
Bernard S. Van Rensselaer, Montana
Carl M. Walker, South Dakota
Orville Watkins, Puerto Rico
Worth Crowley, Tennessee
William B. Wideall, New Jersey

TRANSPORTATION

FRANK A. LEON, Chairman
Maj. Henry M. T. Cunningham,
Executive Vice Chairman
William J. Warner,
Executive Secretary

William Calomiris, Vice Chairman
Eugene J. Cremins, Vice Chairman
Rody W. Markley, Jr., Vice Chairman
Frank L. Roberts, Vice Chairman
Floyd G. Sease, Vice Chairman
J. B. Woodside, Vice Chairman

Advisory

Fred A. Smith, Chairman
J. Howley Smith, Vice Chairman
Chief U. E. Baughman
Edmund O. Carl
Washington I. Cleveland
Karl W. Corby
Dep. Chief Howard V. Covell
Leonard B. Doggett, Jr.
Capt. Albert L. Embrey
Norma E. Jett
Edward J. Kelly
John J. McDonald
William A. Miller
Capt. Charles W. Moss, U.S.N.
Charles M. Murphy
Chief Robert V. Murray
John D. Riggs
Blake M. Walker
George R. Wilson

Aviation

Vice Adm. E. S. Land, Chairman
Frank Macklin, Vice Chairman
J. H. Carmichael
Colonel Carroll Cone
Robert Rempick
Morris Shipley
T. K. Taylor
S. G. Tipton

Bus Fleet

Henry F. Burroughs, Chairman
Thomas D. Kelly, Vice Chairman
Chester Atwood
Morris Fox
Robert Mitchell
Vincent Paris
Marvin Walsh
John Wilson

Parking and Traffic Sub-Committee

George E. Keneipp, Chairman
Wallace L. Braun, Vice Chairman
Dep. Chief John J. Agnew
Otto Berkley
O. Ray Chalk
John Christmas
Donald Clemmer
Arthur J. Dezesdorf
Anthony L. Ellison
Morris Fox
Herbert A. Friede
Capt. Marshall Gore
Fred Haller

Samuel E. Harrison
George E. C. Hayes
Lee M. Hedgcock
Thomas G. Jones
Capt. Melvin Leach
William J. Liverman
Elmo H. Mitten
John N. Robertson
John L. Smith, Jr.
James G. Somerville
Howard Starling
Chief Harold Stewart
Arthur J. Sudlus
Harry A. Swaggart
William H. Voltz

Railroad Sub-Committee

W. T. Faricy, Chairman
W. J. Kelly, Vice Chairman
E. E. Barry
W. H. Clifford
E. K. Comer
C. L. Dozier
M. B. Duggan
J. R. Getty
M. H. Lingenfelter
Justin Nolan
E. B. Padrick
H. R. Powell
A. H. Eitter
J. B. Sharpton
J. F. Whitington
A. J. Winkler

Steamship Sub-Committee

Alvin Shapiro, Chairman
James J. Nolan, Vice Chairman
E. Russell Lutz
Nicholas D. Pasco
A. J. Pessel
William H. Trauth

Taxicab Fleet Sub-Committee

Harry C. Davis, Chairman
Alden T. Keating, Vice Chairman
E. A. Abner
G. C. Benjamin
A. W. Day
Jesse Givens
Frank Gresham
James J. Jewell
Oscar Lovig
Melville Milthead
Arch J. Oliver
J. Byron Patrick
Charles E. Patterson
Gerald Russo
Daniel Smith
E. I. Youngblood

UNAUTHORIZED PRACTICES

DEWEY ZIRKIN, Chairman
Leland McCarthy, Vice Chairman

VETERANS PARTICIPATION

JOHN LEWIS SMITH, JR., Chairman
Waldron E. Leonard, Vice Chairman
Edwin S. Bettelheim, Jr.,
Chairman, Sub-Com. on Parades

Herbert Borchardt
Michael Casey
Harry W. Colmery
George F. Cook
Claude L. Dawson
James A. DeForce
Louis D. Dilde

Fred Daring
Alexander C. Galante
J. P. (Pat) Gorman
Charles E. Grimm
Mrs. Pearl Heagerty
Frank R. Heise
Lloyd E. Henry
Fred Jefferson
Omar B. Ketchum
T. O. Kragel
Robert W. Livingston
William F. Luckett
Ralph L. Mayo
J. William McAvoy
Edward F. McGinnis
LeRoy G. Metz
John M. Murphy, Sr.
Reginald H. Murphy, Jr.
Leonard J. Orbeck
Bertram Reikind
Robert H. Rizer
William D. Rogers
Frank R. Schwengel
Luther Skaggs, Jr.
Morris V. Spicci
Lynn U. Stambaugh
Bruce Stubblefield
John Thomas Taylor
W. B. Warrington
Henry E. Williams
Raymond K. Wiper

VOLUNTEER PARTICIPATION

MRS. MARK H. CORNELL, Chairman
Mrs. Maxine T. Howells, Vice Chairman

Mrs. Carl Beck
Mrs. Dorothy Beckley
Mrs. Edwin Bell
Mrs. Whitney Gilliland
Miss Juliette Pothier

YOUNG REPUBLICAN ACTIVITIES

HERMAN F. SCHEURER, JR., Chairman
Edmund M. Jaskiewicz, Vice Chairman
Robert G. McCune—Executive
Secretary

Miss Joyce Bovik
Donald R. Byrne
Miss Shirley Camus
Miss Jane Case
Val Choslowski
Mrs. William B. Crouch
John Curtin
Fred L. Dixon
John A. Finken
James P. Foley
Miss Joan Foreman
William Frawley
Miss Lucille Hertz
Leonard A. Jaskiewicz
Walter Jubies
L. Howard Kerns
Miss Nancy Kipp
Richard S. T. Marsh
Marlin K. McDaniel
Mr. and Mrs. Duane McDowell
Julian B. McKay
Charles K. McWhorter
Patrick J. Opaten, Jr.
Samuel E. Portwine
Miss Janice Roberts
Miss Catherine D. Scott
Del Smith
Miss Barbara Spillinger
James Stanger
Miss Jill Whitmore
Robert E. Williams

CREDITS

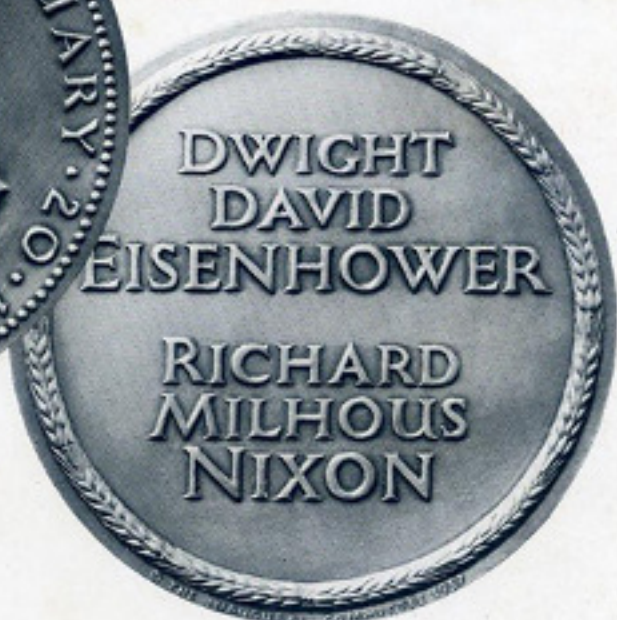
Chase Studios, Washington
Republican Senatorial Campaign Committee
Miller of Washington
Scurlock, Washington
Smithsonian Institution, Washington
Waltz Studio, Washington
Harris & Ewing, Washington
John Henderson
Arnold Newman, New York

Library of Congress
National Republic Magazine
U. S. Park Service
Vincent A. Finnigan
San Francisco Call-Bulletin
San Francisco Chronicle
International News Photos
Wide World Photos
United Press Photos

Arthur Scott
U. S. Navy
Van Durand, Washington
Pan American World Airways
U. S. Army
Glogau, Washington
Fabian Bachrach
Republican National Committee
The Saturday Evening Post

Typography by Nave Typographic Service, Washington, D. C.
Lithographed in U.S.A. by Haynes Lithograph Co., Rockville, Md.
Brochure designed and written by Joseph Ruttkay and J. J. Wuerthner, Jr.





INAUGURAL MEDAL



THE INAUGURAL MEDAL for the second inauguration of Dwight D. Eisenhower and Richard M. Nixon, pictured above, is a memorable souvenir of the 43rd Inauguration.

Two originals of this medal are struck in gold in the same size, about 2¾ inches, and presented to the President and Vice President after the Inauguration. Silver and bronze medals are also struck for sale to the general public.

This is the first Inaugural Medal to bear the likeness of both the President and Vice President on the face since 1909 when President William Howard Taft and Vice President James S. Sherman were both depicted on the face of the medal. The 1957 medal is the twelfth to be struck since the custom of Inaugural Medals started in 1901 on the occasion of the second inauguration of President McKinley.

Walker Hancock, an American sculptor of international fame, designed the 1957 medal. The first medal of President Eisenhower in 1953 was also created by Mr. Hancock, and the 1957 medal follows the impressive simplicity of the 1953 medal.

A resident of Gloucester, Massachusetts, Mr. Hancock is currently in Rome, Italy, at the American Academy. He has won many awards, including the Widener Gold Medal and the Prix de Rome. Among his distinguished works are the War Memorial of the Pennsylvania Railroad at Philadelphia, the World War II Air Medal and the U.S. Marine Corps Expeditionary Medal.

Designed in Rome, the finished models of the 1957 Inaugural Medal were flown to the United States to be struck by the Medallion Art Company of New York City, one of the foremost firms of medalists in the United States.

How to get your Inaugural Medal . . .

Bronze and silver Inaugural Medals may be obtained by writing Gilbert Hahn, Jr., Chairman, 1957 Inaugural Medal Committee, 1022-15th Street, N.W., Washington, D. C. The price, postage paid, is \$3.50 for the bronze medal and \$27.50 for a serialized silver medal. Add 2% sales tax if mailed to the District of Columbia.

The President's PRAYER

Almighty God

As we stand here at this moment,
my future associates in the executive branch
of the Government join me in beseeching
that Thou wilt make full and complete
our dedication to the service of the people in
this throng and their fellow citizens everywhere.

Give us, we pray, the power to discern clearly
right from wrong and allow all our words
and actions to be governed thereby and by
the laws of this land.

Especially we pray that our concern shall be
for all the people, regardless of station,
race or calling.

May cooperation be permitted
and be the mutual aim of those who, under the
concept of our Constitution, hold to differing
political beliefs—so that all may work for the good
of our beloved country and for Thy Glory

Amen