

C 1 1 3 7

IV 83.1

OVERZICHT

DER METEOROLOGISCHE WAARNEMINGEN
VERRICHT OP DE METEOROLOGISCHE STATIONS
IN NEDERLANDS WEST-INDIË
IN DE JAREN 1940—1946

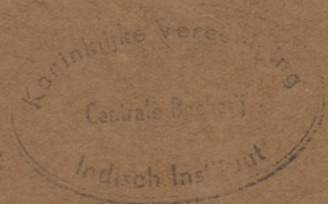
SAMENGESTELD
DOOR HET KONINKLIJK NEDERLANDS
METEOROLOGISCH INSTITUUT

*

SUMMARY

OF THE METEOROLOGICAL OBSERVATIONS
MADE AT THE METEOROLOGICAL STATIONS
IN THE NETHERLANDS WEST-INDIES
DURING THE YEARS 1940—1946

COMPILED
BY THE ROYAL DUTCH METEOROLOGICAL
INSTITUTE



TE VERKRIJGEN BIJ

STAATSDRUKKERIJ / 'S-GRAVENHAGE

TO BE PURCHASED FROM

1948

PRIJS F 1,50

PRICE F 1,50



OVERZICHT
DER METEOROLOGISCHE WAARNEMINGEN
VERRICHT OP DE METEOROLOGISCHE STATIONS
IN NEDERLANDS WEST-INDIË
IN DE JAREN 1940—1946

SAMENGESTELD
DOOR HET KONINKLIJK NEDERLANDS
METEOROLOGISCH INSTITUUT

★

SUMMARY
OF THE METEOROLOGICAL OBSERVATIONS
MADE AT THE METEOROLOGICAL STATIONS
IN THE NETHERLANDS WEST-INDIES
DURING THE YEARS 1940—1946

COMPILED
BY THE ROYAL DUTCH METEOROLOGICAL
INSTITUTE

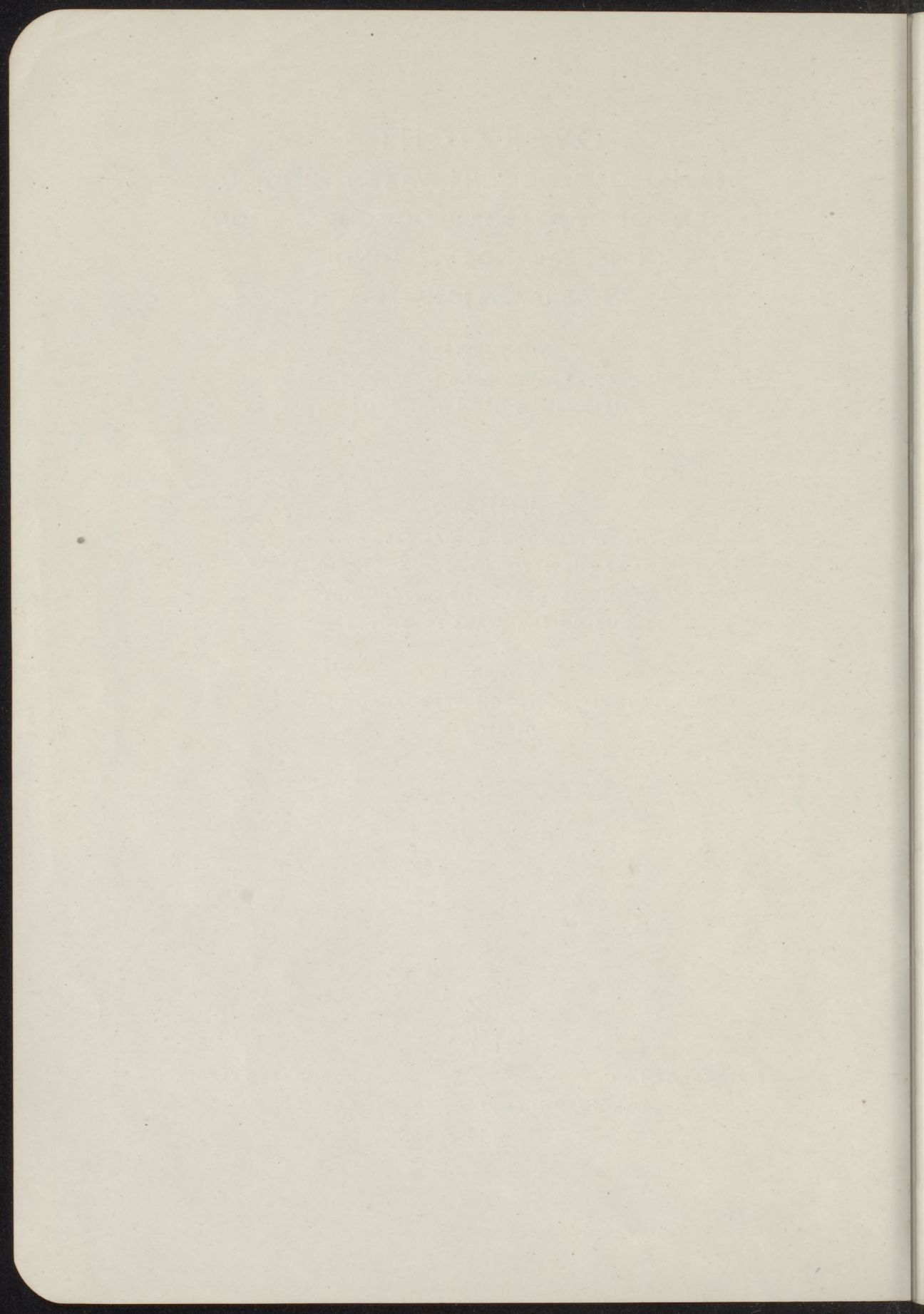


TE VERKRIJGEN BIJ

STAATSDRUKKERIJ / 'S-GRAVENHAGE

TO BE PURCHASED FROM

1948



INHOUD

	Blz.
INLEIDING	5
WAARNEMINGEN TE PARAMARIBO. Jaarlijkse overzichten der uitkomsten van driemaaldaagse waarnemingen in de jaren 1940—1946	6
JAARLIJKSE OVERZICHTEN van de uitkomsten der regenwaarnemingen in Suriname, 1940—1946	14
WAARNEMINGEN op Curaçao. Jaarlijkse overzichten van driemaaldaagse waarnemingen te Willemstad (Fort Nassau), 1940—1946	24
JAARLIJKSE OVERZICHTEN van de uitkomsten der regenwaarnemingen op de Nederlandse Antillen, 1940—1946	36

CONTENTS

	Page
INTRODUCTION	5
OBSERVATIONS AT PARAMARIBO. Annual summaries of the results, obtained from observations taken 3 times a day, during the years 1940—1946	6
ANNUAL SUMMARIES of the results of rainfall observations in Suriname, 1940—1946	14
OBSERVATIONS AT CURAÇAO. Annual summaries of the results, obtained from observations taken 3 times a day at Willemstad (Fort Nassau), 1940—1946	28
ANNUAL SUMMARIES of the results of rainfall observations made in the Netherlands Antilles, 1940—1946	36

INDEX

1940-1941

1941-1942

1942-1943

1943-1944

1944-1945

1945-1946

1946-1947

1947-1948

1948-1949

1949-1950

1950-1951

1951-1952

1952-1953

1953-1954

1954-1955

1955-1956

1956-1957

1957-1958

1958-1959

1959-1960

1960-1961

1961-1962

1962-1963

1963-1964

1964-1965

1965-1966

1966-1967

1967-1968

1968-1969

1969-1970

1970-1971

1971-1972

1972-1973

1973-1974

1974-1975

1975-1976

1976-1977

1977-1978

1978-1979

1979-1980

1980-1981

1981-1982

1982-1983

1983-1984

1984-1985

1985-1986

1986-1987

1987-1988

1988-1989

1989-1990

1990-1991

1991-1992

1992-1993

1993-1994

1994-1995

1995-1996

1996-1997

1997-1998

1998-1999

1999-2000

2000-2001

2001-2002

2002-2003

2003-2004

2004-2005

2005-2006

2006-2007

2007-2008

2008-2009

2009-2010

2010-2011

2011-2012

2012-2013

2013-2014

2014-2015

2015-2016

2016-2017

2017-2018

2018-2019

2019-2020

2020-2021

CONTENTS

1940-1941

1941-1942

1942-1943

1943-1944

1944-1945

1945-1946

1946-1947

1947-1948

1948-1949

1949-1950

1950-1951

1951-1952

1952-1953

1953-1954

1954-1955

1955-1956

1956-1957

1957-1958

1958-1959

1959-1960

1960-1961

1961-1962

1962-1963

1963-1964

1964-1965

1965-1966

1966-1967

1967-1968

1968-1969

1969-1970

1970-1971

1971-1972

1972-1973

1973-1974

1974-1975

1975-1976

1976-1977

1977-1978

1978-1979

1979-1980

1980-1981

1981-1982

1982-1983

1983-1984

1984-1985

1985-1986

1986-1987

1987-1988

1988-1989

1989-1990

1990-1991

1991-1992

1992-1993

1993-1994

1994-1995

1995-1996

1996-1997

1997-1998

1998-1999

1999-2000

2000-2001

2001-2002

2002-2003

2003-2004

2004-2005

2005-2006

2006-2007

2007-2008

2008-2009

2009-2010

2010-2011

2011-2012

2012-2013

2013-2014

2014-2015

2015-2016

2016-2017

2017-2018

2018-2019

2019-2020

2020-2021

INLEIDING

De reeks van overzichten der West-Indische waarnemingen is na 1939 door de oorlog onderbroken. De uitkomsten van 1940—1946 worden nu gezamenlijk uitgegeven, zoals zulks ook voor die van 1919—1928 het geval is geweest.

De bewolkingswaarnemingen van Curaçao in 1944, 1945 en 1946 zijn niet opgenomen, omdat zij de indruk maakten te hoog te zijn. Verder kan omtrent de dampdrukking worden opgemerkt, dat de waarnemingen van 1941—1944 iets te hoog schijnen te zijn. De temperatuurwaarnemingen van Curaçao zijn abnormaal hoog in 1940 tot en met October 1944, zonder dat daarvoor een verklaring is te geven. Daarna zijn ze zelfs iets aan de lage kant, vergeleken met die van vóór 1940.

De waarnemingsuren zijn uitgedrukt in plaatselijke tijd. De waarnemingen zijn sinds 1 Augustus 1944 op Curaçao, verricht te 7.30, 13.30 en 19.30 Porto Rico Standard Time, overeenkomende met 6.54, 12.54 en 18.54 plaatselijke tijd.

Een bewerking van de West-Indische waarnemingen is in 1935 verschenen als n^o. 36 van de „Mededelingen en Verhandelingen” van het Koninklijk Nederlands Meteorologisch Instituut, onder de titel „Het klimaat van Nederlands West-Indië”.

INTRODUCTION

The series of these summaries has been interrupted after 1939. The results of 1940—1946 are now published together.

The observations of cloudiness at Curaçao in 1944, 1945, and 1946 have not been inserted, being apparently too high. Furthermore, it may be remarked that vapour pressure in 1941—1944 seems to be somewhat too high. The temperature observations of Curaçao are abnormally high in 1940 till October 1944 included, the cause of this deviation being unknown. Afterwards temperature is even relatively low in comparison with that before 1940. The hours of observation are expressed in local time. Since August 1, 1944, the observations of Curaçao were taken at 7.30, 13.30, and 19.30 Porto Rico Standard Time, corresponding with 6.54, 12.54, and 18.54 local time.

An essay on these West-Indian observations was published in 1935 as n^o. 36 of the „Mededelingen en Verhandelingen” of the Royal Netherlands Meteorological Institute, under the title „The Climate of the Netherlands West-Indies”.

OVERZICHT VAN DE WAARNEMINGEN

TE PARAMARIBO IN 1940

	Luchtdrukking in mm, herleid op 0° C ¹⁾						Temperatuur in graden						
	8	14	18	M	Max.	Min.	8	14	18	M	Maximum		
											M	Abs.	Datum
Januari	762.6	761.3	761.2	761.7	764.0	759.3	24.5	30.0	26.4	27.0	30.8	32.2	29
Februari	762.3	761.3	760.8	761.5	763.5	758.5	25.5	31.0	26.8	27.8	32.0	33.7	27
Maart	761.8	760.5	760.2	760.8	763.4	758.3	25.9	31.1	27.3	28.1	32.1	33.8	10
April	762.2	760.8	760.4	761.1	763.5	758.2	26.5	30.2	27.5	28.1	32.1	33.4	24
Mei	761.8	760.6	760.3	760.9	763.6	758.6	26.3	29.5	26.7	27.5	31.5	33.0	12
Juni	762.6	761.4	761.1	761.7	764.7	760.0	25.6	29.1	26.5	27.1	30.8	32.6	12
Juli	763.3	762.1	761.7	762.4	765.4	760.1	25.7	29.6	26.5	27.3	31.6	33.2	22
Augustus	762.6	761.3	760.8	761.6	763.6	758.7	26.1	30.6	26.8	27.8	32.4	33.6	21
September	761.9	760.4	760.2	760.8	762.6	758.8	26.4	31.5	27.5	28.5	33.1	33.9	25
October	761.6	760.1	759.8	760.5	762.7	758.6	27.0	31.7	27.7	28.8	33.5	34.6	11
November	760.0	758.2	758.1	758.8	761.7	755.8	26.6	31.2	27.3	28.4	33.0	34.9	8
December	761.5	760.1	759.9	760.5	762.3	758.5	25.5	29.3	26.6	27.1	31.3	32.7	26
Jaar	762.0	760.7	760.4	761.0	765.4	755.8	26.0	30.4	27.0	27.8	32.0	34.9	—

Celsius			Dampdrukking in mm						Betrekkelijke vochtigheid in procenten					Bewolking (0—10)				Regenval in mm		
Minimum			8	14	18	M	Max.	Min.	8	14	18	M	Min.	8	14	18	M	Totaal	Max.	Datum
M	Abs.	Datum																		
21.0	17.9	27	20.6	19.2	19.6	19.8	23.7	16.7	90	61	76	76	50	3.4	5.1	3.1	3.9	83.3	46.7	8
21.9	19.2	3, 7	20.7	19.0	19.0	19.6	22.2	16.1	86	57	73	72	43	4.4	5.8	3.9	4.7	4.9	1.7	19
22.2	19.9	28	20.7	19.5	19.8	20.0	24.0	16.7	84	59	74	72	47	5.2	6.6	4.6	5.5	25.5	11.0	16
23.3	21.4	25, 26	21.7	20.7	20.7	21.0	24.3	16.8	85	66	76	76	46	6.8	6.6	4.8	6.1	114.9	27.5	16
23.4	21.3	5	22.1	21.9	21.5	21.8	25.4	17.8	87	73	83	81	49	7.5	7.2	6.6	7.1	283.2	61.8	18
23.2	22.1	3	22.2	22.7	22.3	22.4	24.9	18.6	91	77	87	85	53	6.8	7.5	7.3	7.2	470.1	74.3	27
23.0	21.9	27	21.8	22.3	21.9	22.0	24.6	19.0	89	73	85	82	54	3.4	7.6	5.6	5.5	273.4	69.2	26
23.1	22.2	28	22.1	22.2	21.8	22.0	24.7	18.0	88	69	77	78	50	2.6	6.5	6.0	5.0	236.4	59.0	17
23.3	22.4	22	22.4	21.4	22.2	22.0	24.3	18.9	88	63	81	77	51	2.2	5.8	4.6	4.2	108.7	27.8	23
23.2	22.1	11	22.1	21.6	22.2	22.0	24.7	16.6	83	63	80	75	43	3.5	5.8	4.7	4.7	59.0	16.3	18
23.2	21.9	30	21.9	21.5	21.6	21.7	24.8	16.5	84	65	80	76	41	4.0	6.8	5.3	5.4	110.3	27.0	23
22.9	21.2	26	22.0	21.6	21.6	21.7	23.7	19.0	91	72	84	82	56	4.7	7.7	7.5	6.6	127.4	22.7	15
22.8	17.9	—	21.7	21.1	21.2	21.3	25.4	16.1	87	66	80	78	41	4.5	6.6	5.3	5.5	1897.1	74.3	—

OVERZICHT VAN DE WAARNEMINGEN

TE PARAMARIBO IN 1941

	Luchtdrukking in mm, herleid op 0° C ¹⁾						Temperatuur in graden						
	8	14	18	M	Max.	Min.	8	14	18	M	Maximum		
											M	Abs.	Datum
Januari	762.2	760.9	760.6	761.2	765.1	758.4	25.4	28.5	26.4	26.8	30.2	32.3	11
Februari	762.1	761.1	760.7	761.3	762.9	759.2	25.6	29.8	26.7	27.4	30.7	31.9	23
Maart	762.1	761.0	760.6	761.2	763.4	759.0	25.7	30.6	27.0	27.8	31.7	33.3	3
April	761.6	760.4	759.9	760.6	763.7	758.4	26.5	30.0	27.7	28.1	31.7	33.0	11, 18, 19
Mei	761.8	760.6	760.2	760.9	763.3	758.4	26.3	28.7	26.9	27.3	31.0	32.9	5
Juni	763.3	762.0	761.8	762.4	764.8	760.1	25.5	29.1	26.3	27.0	30.7	32.4	2
Juli	763.1	761.9	761.5	762.2	764.4	759.9	25.8	30.0	26.8	27.5	31.7	33.6	31
Augustus	762.2	760.7	760.5	761.1	764.1	758.7	26.1	30.8	27.1	28.0	32.6	33.4	2
September	761.5	759.9	759.6	760.3	763.0	758.0	26.6	32.3	28.0	29.0	33.5	34.7	26
October	761.7	760.0	759.8	760.5	763.9	758.3	26.9	31.1	27.6	28.5	33.3	35.4	22
November	760.6	759.1	758.9	759.5	761.7	757.6	26.5	31.2	27.1	28.3	32.7	34.0	18, 24
December	761.6	760.2	759.9	760.6	762.9	759.1	25.6	28.8	26.3	26.9	30.5	32.4	1, 2
Jaar	762.0	760.6	760.3	761.0	765.1	757.6	26.0	30.1	27.0	27.7	31.7	35.4	—

Celsius			Dampdrukking in mm						Betrekkelijke vochtigheid in procenten					Bewolking (0—10)				Regenval in mm		
Minimum			8	14	18	M	Max.	Min.	8	14	18	M	Min.	8	14	18	M	Totaal	Max.	Datum
M	Abs.	Datum																		
23.1	20.1	10	21.5	21.5	20.8	21.3	24.8	18.8	90	75	82	82	59	6.6	7.7	6.3	6.9	186.2	35.5	29
23.1	20.7	28	21.7	20.6	20.4	20.9	23.1	18.2	89	67	79	78	54	5.9	6.4	4.3	5.5	45.2	19.4	17
22.1	18.4	12	21.2	20.4	20.2	20.6	23.5	17.4	86	63	77	75	51	4.3	6.7	4.0	5.0	72.7	25.7	25
23.2	21.1	23	22.6	21.8	21.2	21.9	24.5	18.5	88	70	80	79	51	5.8	7.5	5.0	6.1	187.1	58.1	29
23.8	21.4	29	22.8	22.9	22.2	22.6	25.2	19.2	90	79	84	84	61	6.7	8.0	6.0	6.9	439.9	59.0	9
23.5	22.4	19	22.3	22.8	22.6	22.6	24.5	20.7	92	77	89	86	58	6.9	7.9	7.6	7.5	258.0	44.0	3
23.2	21.9	18	22.2	21.8	22.2	22.1	24.0	18.5	90	70	85	82	53	4.1	7.0	6.4	5.8	177.9	26.3	12
23.5	22.6	23, 28, 30	22.4	22.6	22.3	22.4	24.6	20.0	88	69	84	80	55	3.5	6.8	5.7	5.3	145.2	26.1	23
23.4	22.2	21	22.5	21.5	21.8	21.9	25.1	15.7	87	60	78	75	42	2.9	5.4	3.4	3.9	44.4	16.0	17
23.6	22.1	10	23.0	22.2	22.3	22.5	24.8	17.6	87	67	81	78	45	4.7	7.0	7.5	6.4	167.3	41.5	29
23.2	20.7	19	22.5	21.7	22.0	22.1	24.2	18.1	87	65	83	78	48	4.9	7.0	5.1	5.7	77.3	20.5	25
22.9	21.1	23	22.1	22.6	21.8	22.2	24.7	19.8	91	77	86	85	64	5.7	7.2	7.0	6.6	247.3	32.1	31
23.2	18.4	—	22.2	21.9	21.6	21.9	25.2	15.7	89	70	82	80	42	5.2	7.0	5.7	6.0	2048.5	59.0	—

1) Hoogte boven zee 3.7 m.

OVERZICHT VAN DE WAARNEMINGEN

TE PARAMARIBO IN 1942

	Luchtdrukking in mm, herleid op 0° C ¹)						Temperatuur in graden							Celsius			Dampdrukking in mm						Betrekkelijke vochtigheid in procenten					Bewolking (0—10)				Regenval in mm		
	8	14	18	M	Max.	Min.	8	14	18	M	Maximum			Minimum			8	14	18	M	Max.	Min.	8	14	18	M	Min.	8	14	18	M	Totaal	Max.	Datum
											M	Abs.	Datum	M	Abs.	Datum																		
Januari	762.7	761.5	761.1	761.8	763.9	758.6	24.9	29.4	26.1	26.8	30.9	32.4	31	22.1	20.0	5	21.1	20.8	20.6	20.8	23.6	18.5	90	68	81	80	58	4.3	6.7	4.2	5.1	52.5	11.7	27
Februari	760.8	759.9	759.5	760.1	762.6	758.4	25.3	29.5	26.4	27.1	30.7	32.5	27	22.5	21.5	6.9	21.1	21.0	20.3	20.8	24.3	17.7	88	68	79	79	55	6.3	6.6	4.1	5.7	112.8	29.5	13
Maart	761.9	760.9	760.2	761.0	763.0	758.4	25.7	30.0	26.7	27.5	31.4	33.0	21	23.0	21.1	7, 10, 12, 13	21.1	20.9	20.7	20.9	23.2	18.7	87	66	80	78	57	6.1	7.2	5.3	6.2	46.3	14.3	29
April	762.1	760.7	760.3	761.0	763.2	758.5	25.8	29.0	26.4	27.1	30.9	33.0	30	23.3	20.3	16	21.8	22.2	21.5	21.8	24.9	17.4	88	85	84	86	51	6.3	7.8	6.1	6.7	233.3	37.4	28
Mei	761.9	760.5	760.0	760.8	763.5	758.0	25.7	28.3	26.4	26.8	31.1	32.9	7	23.6	22.6	21	22.5	23.0	22.1	22.5	25.1	18.0	92	81	86	86	55	6.2	7.7	6.3	6.7	353.1	39.3	16
Juni	762.5	761.5	761.0	761.7	763.8	760.0	25.2	27.9	26.0	26.4	31.0	32.9	16	23.2	22.0	27	22.0	22.7	22.2	22.3	24.8	19.5	92	82	89	88	61	4.8	8.3	7.5	6.9	407.7	59.8	27
Juli	763.1	761.8	761.4	762.1	764.8	760.1	24.8	29.2	25.9	26.6	31.3	32.9	22, 30	22.7	21.2	3	21.2	22.3	21.9	21.8	25.1	19.1	91	74	88	84	54	5.2	7.8	6.8	6.6	259.8	31.7	28
Augustus	762.4	761.0	760.6	761.3	763.4	759.2	25.6	30.6	26.6	27.6	32.5	35.2	29	23.0	21.6	7	21.9	21.7	21.9	21.8	24.4	17.9	90	67	85	81	52	2.3	6.1	5.9	4.8	143.2	20.2	25
September	761.9	760.4	760.0	760.8	763.5	758.3	26.4	31.2	27.1	28.2	33.2	34.4	20, 28	23.4	22.1	22	22.4	21.5	22.0	22.0	24.4	18.5	88	65	82	78	47	3.3	5.6	4.6	4.5	95.7	37.3	22
October	760.9	759.3	759.1	759.8	763.0	757.7	26.8	30.9	27.4	28.4	33.5	34.4	14	23.3	22.1	17	22.2	21.7	22.3	22.1	24.4	18.0	85	66	82	78	46	2.6	6.5	3.9	4.3	94.9	27.3	12
November	760.0	758.1	758.0	758.7	762.4	756.1	26.7	32.6	27.9	29.1	33.8	35.0	3, 21	23.5	21.6	16	21.8	20.5	22.5	21.6	25.9	16.9	84	57	80	74	45	2.9	5.2	3.4	3.8	44.7	19.2	1
December	761.1	759.7	759.5	760.1	762.8	757.8	24.8	28.4	25.4	26.2	30.8	34.4	1	22.7	21.1	5	21.5	21.9	21.7	21.7	24.0	18.9	93	77	90	87	52	6.3	8.3	7.6	7.4	247.3	33.6	13
Jaar	761.8	760.4	760.1	760.8	764.8	756.1	25.6	29.8	26.5	27.3	31.8	35.2	—	23.0	20.0	—	21.7	21.7	21.6	21.7	25.9	16.9	89	71	81	82	45	4.7	7.0	5.5	5.7	2091.3	59.8	—

OVERZICHT VAN DE WAARNEMINGEN

TE PARAMARIBO IN 1943

	Luchtdrukking in mm, herleid op 0° C ¹)						Temperatuur in graden							Celsius			Dampdrukking in mm						Betrekkelijke vochtigheid in procenten					Bewolking (0—10)				Regenval in mm		
	8	14	18	M	Max.	Min.	8	14	18	M	Maximum			Minimum			8	14	18	M	Max.	Min.	8	14	18	M	Min.	8	14	18	M	Totaal	Max.	Datum
											M	Abs.	Datum	M	Abs.	Datum																		
Januari	761.5	760.2	759.9	760.5	762.8	758.7	24.7	27.9	25.6	26.1	29.9	31.4	7, 8, 24	22.8	21.6	5, 18	21.6	21.8	21.4	21.6	24.1	18.1	94	79	88	87	59	6.4	7.7	7.1	7.1	251.0	25.6	8
Februari	761.7	760.7	760.4	760.9	762.8	758.9	24.6	28.2	25.5	26.1	29.8	31.4	4	22.7	21.6	9	21.4	21.6	20.7	21.2	23.5	19.2	93	77	85	85	63	6.9	7.5	6.7	7.0	244.4	52.7	22
Maart	761.4	760.5	759.9	760.6	763.1	758.7	24.4	27.5	25.2	25.7	29.2	31.1	2	22.5	21.1	14	21.1	21.2	20.5	20.9	24.0	18.8	93	79	86	86	63	7.7	8.1	7.2	7.7	408.5	55.6	22
April	762.4	761.1	760.6	761.4	764.0	759.6	25.3	28.3	26.0	26.5	30.6	31.9	7, 30	22.6	20.6	2, 3	21.8	21.3	21.1	21.4	25.0	16.5	91	76	85	84	50	5.5	7.2	6.3	6.3	155.3	33.4	5
Mei	762.1	760.8	760.6	761.2	764.4	759.4	25.0	27.7	25.7	26.1	30.3	32.3	1	23.0	22.1	4	22.1	22.7	22.1	22.3	24.1	20.4	94	82	90	89	66	6.5	7.8	7.1	7.1	172.4	19.4	4
Juni	762.6	761.4	761.1	761.7	764.1	758.8	24.7	27.7	26.1	26.2	30.2	33.3	17	22.7	21.0	14	21.8	22.3	22.4	22.2	24.3	18.6	94	82	89	88	50	5.1	7.7	6.2	6.3	256.7	43.0	1
Juli	763.5	762.3	762.0	762.6	764.7	761.0	24.8	28.7	25.7	26.4	31.2	32.3	22, 29	22.6	21.3	4	21.8	22.2	21.6	21.9	24.5	18.7	94	76	88	86	55	3.9	6.9	6.8	5.9	299.4	75.0	4
Augustus	762.4	760.9	760.5	761.3	763.9	757.5	28.7	30.2	26.8	28.6	32.5	34.2	21	23.1	22.0	7	23.0	22.1	22.2	22.4	24.9	18.3	92	70	85	82	50	2.8	6.5	4.9	4.7	118.5	33.7	6
September	762.0	760.5	760.1	760.9	762.9	758.1	26.2	32.1	27.6	28.6	33.9	35.9	9	23.3	21.7	27	22.2	21.3	22.8	22.1	25.0	17.9	88	61	83	77	47	2.2	5.0	3.6	3.6	51.6	17.7	22
October	761.1	759.4	759.4	760.0	762.7	757.4	26.1	32.4	27.8	28.8	34.0	35.2	14	23.2	21.5	31	22.3	21.4	22.1	21.9	24.6	16.1	89	60	79	76	40	3.7	4.9	3.6	4.1	52.1	23.5	2
November	760.7	759.1	759.1	759.6	762.3	757.3	25.3	30.3	26.4	27.3	32.5	34.3	13	22.5	20.6	5	22.6	23.1	22.4	22.7	25.5	19.7	94	73	88	85	53	4.7	5.8	5.0	5.2	133.4	25.3	27
December	761.0	759.6	759.5	760.0	762.3	758.0	24.9	28.5	25.9	26.4	30.7	33.3	6	22.7	21.4	16	21.5	21.8	21.7	21.7	24.8	17.5	92	76	87	85	49	6.0	7.6	6.6	6.7	244.9	35.5	26
Jaar	761.9	760.5	760.3	760.9	764.7	757.3	25.4	29.1	26.2	26.9	31.2	35.9	—	22.8	20.6	—	21.9	21.9	21.8	21.9	25.5	16.1	92	74	86	84	40	5.1	6.9	5.9	6.0	2388.2	75.0	—

1) Hoogte boven zee 3.7 m.

OVERZICHT VAN DE WAARNEMINGEN

TE PARAMARIBO IN 1944

	Luchtdrukking in mm, herleid op 0° C ¹)						Temperatuur in graden							Celsius			Dampdrukking in mm						Betrekkelijke vochtigheid in procenten					Bewolking (0—10)				Regenval in mm		
	8	14	18	M	Max.	Min.	8	14	18	M	Maximum			Minimum			8	14	18	M	Max.	Min.	8	14	18	M	Min.	8	14	18	M	Totaal	Max.	Datum
											M	Abs.	Datum	M	Abs.	Datum																		
Januari	762.2	761.1	760.8	761.4	763.5	758.9	24.3	28.6	25.9	26.3	30.5	32.5	1	21.9	20.1	21	20.6	20.4	20.5	20.5	23.8	17.3	92	71	83	82	55	4.2	5.6	4.5	4.8	126.6	25.8	11
Februari	762.4	761.5	761.0	761.6	763.6	760.0	24.5	28.4	26.0	26.3	30.4	32.1	4	21.6	20.0	16	20.8	20.9	20.3	20.7	24.3	18.2	91	73	82	82	60	6.1	6.2	5.4	5.9	228.9	66.7	28
Maart	762.2	761.2	760.8	761.4	763.1	759.1	24.9	28.6	25.9	26.5	30.9	33.1	18	21.7	18.2	13	21.2	21.3	20.9	21.1	24.1	17.6	91	74	84	83	57	6.5	7.2	7.0	6.9	249.8	55.0	25
April	762.3	761.0	760.6	761.3	763.4	759.2	25.5	28.7	26.4	26.9	31.6	33.1	2	22.5	20.9	1	22.0	22.3	21.6	22.0	24.3	18.2	91	77	84	84	56	6.9	7.3	7.0	7.1	218.8	49.2	30
Mei	761.9	760.4	759.9	760.7	763.0	758.1	25.6	29.2	27.0	27.3	31.1	33.2	12	23.4	21.2	11	22.5	23.1	22.5	22.7	24.9	20.4	92	74	85	84	57	6.4	7.0	6.1	6.5	241.8	61.0	30
Juni	762.0	760.8	760.4	761.1	763.3	759.4	25.1	28.8	26.6	26.8	30.3	32.1	28	23.2	22.2	8	22.0	22.9	22.2	22.4	25.5	20.1	93	79	86	86	60	6.0	7.1	6.5	6.5	357.3	67.2	19
Juli	763.1	761.6	761.1	761.9	764.9	759.7	25.3	29.2	26.4	27.0	30.9	33.4	25	23.1	22.1	29	21.8	22.5	22.2	22.2	24.7	19.6	91	75	87	84	53	3.8	6.7	7.0	5.8	215.6	24.4	29
Augustus	762.1	760.5	760.1	760.9	763.3	758.3	26.2	31.4	27.8	28.5	32.3	34.0	21	23.6	22.9	21	21.8	21.6	22.3	21.9	24.2	16.4	86	64	80	77	43	3.6	5.3	4.9	4.6	80.4	19.0	24
September	762.1	760.4	760.0	760.8	763.4	758.5	26.2	31.1	27.4	28.2	32.2	33.7	18	23.3	22.1	2	22.0	21.8	22.1	22.0	25.3	17.8	87	66	82	78	47	3.0	5.9	5.3	4.7	106.8	32.4	22
October	760.9	759.0	758.9	759.6	762.1	757.5	26.3	32.5	27.9	28.9	33.3	34.8	20	23.1	21.3	25	22.1	21.0	21.3	21.5	24.3	16.1	87	60	76	74	40	3.9	5.6	5.5	5.0	52.8	13.6	5
November	759.4	757.7	757.5	758.2	762.3	755.0	26.5	31.2	27.7	28.5	32.6	34.4	21	23.2	21.6	10	22.4	21.6	21.7	21.9	24.7	15.7	87	65	79	77	40	3.8	6.3	5.8	5.3	89.2	24.2	23
December	760.2	758.8	758.5	759.2	761.9	757.1	25.6	30.8	26.9	27.8	31.6	33.4	6	22.8	20.2	27	21.9	21.3	21.3	21.5	24.5	17.8	90	65	81	79	49	4.4	5.7	5.1	5.1	44.3	7.5	21
Jaar	761.7	760.3	760.0	760.7	764.9	755.0	25.5	29.9	26.8	27.4	31.5	34.8	—	22.8	18.2	—	21.8	21.7	21.6	21.7	25.5	15.7	90	70	82	81	40	4.9	6.3	5.8	5.7	2012.3	67.2	—

OVERZICHT VAN DE WAARNEMINGEN

TE PARAMARIBO IN 1945

	Luchtdrukking in mm, herleid op 0° C ¹)						Temperatuur in graden							Celsius			Dampdrukking in mm						Betrekkelijke vochtigheid in procenten					Bewolking (0—10)				Regenval in mm		
	8	14	18	M	Max.	Min.	8	14	18	M	Maximum			Minimum			8	14	18	M	Max.	Min.	8	14	18	M	Min.	8	14	18	M	Totaal	Max.	Datum
											M	Abs.	Datum	M	Abs.	Datum																		
Januari	761.9	760.5	760.2	760.9	763.1	758.8	24.3	28.5	26.2	26.3	29.2	31.7	16	22.5	20.4	14	20.9	21.0	20.9	20.9	23.8	18.4	93	73	83	83	55	7.7	7.2	6.9	7.3	270.9	40.1	21
Februari	761.3	760.4	760.0	760.6	763.2	758.0	24.8	28.8	26.2	26.6	29.8	31.5	15	22.3	20.3	24	20.8	20.1	20.1	20.3	22.5	18.1	90	69	80	80	51	5.4	6.2	4.7	5.4	223.1	70.1	16
Maart	762.0	760.8	760.3	761.0	763.1	758.5	25.4	29.2	26.4	27.0	30.1	32.2	28	22.9	19.9	22	21.4	20.8	20.4	20.9	23.8	17.5	89	70	80	80	54	6.1	7.2	5.5	6.3	155.1	54.2	24
April	761.7	760.4	760.1	760.7	762.7	758.5	25.7	29.7	26.7	27.4	30.6	32.4	13	22.9	20.5	6	21.8	21.7	21.0	21.5	24.9	18.3	89	70	81	80	54	6.4	6.7	6.0	6.4	97.8	24.4	18
Mei	762.1	760.8	760.5	761.1	763.3	759.1	24.9	28.2	26.4	26.5	29.5	31.7	4, 5	22.8	20.7	2	21.7	22.1	22.0	21.9	23.7	18.5	93	78	86	86	55	7.5	8.0	7.1	7.5	364.0	65.5	12
Juni	762.2	761.0	760.7	761.3	763.3	759.7	25.0	28.4	26.1	26.5	29.9	32.2	18	23.2	22.1	16	21.9	22.3	22.1	22.1	24.7	20.5	93	78	88	86	58	6.3	7.4	7.7	7.1	463.7	126.5	14
Juli	762.5	761.3	760.8	761.5	764.3	759.3	25.2	29.5	26.7	27.1	30.9	32.6	13	23.1	22.5	13, 15, 30	21.6	21.4	21.9	21.6	24.0	16.8	91	71	85	82	49	5.2	7.2	6.4	6.3	201.2	44.7	7
Augustus	762.1	760.7	760.3	761.0	763.4	758.9	25.9	31.3	27.1	28.1	32.2	33.4	31	23.5	22.6	29	21.8	21.5	22.1	21.8	24.6	19.4	88	64	83	78	51	3.7	5.2	5.9	4.9	166.6	21.5	29
September	762.4	760.7	760.4	761.2	763.7	758.5	26.5	32.5	28.2	29.1	33.5	34.5	28	23.5	22.0	18	21.5	20.9	21.5	21.3	25.3	15.7	84	58	76	73	41	2.8	5.9	4.4	4.4	12.9	4.5	18
October	761.5	759.9	759.6	760.3	762.9	758.3	26.0	31.7	28.0	28.6	33.2	34.8	31	23.0	21.1	30	21.9	21.5	21.6	21.7	24.9	15.9	88	63	77	76	40	3.6	6.7	5.4	5.2	38.4	8.5	13
November	760.5	759.0	758.7	759.4	761.8	756.2	25.7	30.1	27.2	27.7	32.0	35.1	1	23.0	21.1	2	22.0	21.7	21.9	21.9	25.1	18.0	90	70	82	81	47	4.8	6.9	5.8	5.8	135.2	32.3	12
December	761.3	760.2	759.9	760.5	762.3	758.4	24.7	28.6	26.2	26.5	29.8	32.8	2	22.8	21.3	11	21.4	21.3	21.3	21.3	23.4	18.7	93	74	84	84	54	6.2	7.3	6.5	6.7	224.5	50.9	17
Jaar	761.8	760.5	760.1	760.8	764.3	756.2	25.3	29.7	26.8	27.3	30.9	35.1	—	23.0	19.9	—	21.6	21.4	21.4	21.4	25.3	15.7	90	70	82	81	40	5.5	6.8	6.0	6.1	2353.4	126.5	—

1) Hoogte boven zee 3.7 m.

OVERZICHT VAN DE WAARNEMINGEN

	Luchtdrukking in mm, herleid op 0° C ¹⁾						Temperatuur in graden						
	8	14	18	M	Max.	Min.	8	14	18	M	Maximum		
											M	Abs.	Datum
Januari	761.9	761.0	760.4	761.1	763.4	758.8	24.2	28.5	26.1	26.3	29.4	31.3	13
Februari	761.7	761.0	760.5	761.1	763.8	758.7	24.6	29.1	26.3	26.7	29.5	31.7	4
Maart	762.1	761.0	760.5	761.2	763.7	758.8	24.8	29.2	26.5	26.8	30.4	33.9	4
April	761.9	760.6	760.0	760.8	763.2	759.2	25.3	28.5	26.8	26.9	30.2	32.0	22
Mei	762.0	760.9	760.5	761.1	763.7	758.4	25.0	27.2	26.0	26.1	29.0	31.0	9, 26
Juni	763.3	762.3	761.9	762.5	764.7	758.8	24.9	28.6	26.7	26.7	30.5	32.5	19
Juli	763.0	762.0	761.3	762.1	764.5	759.7	24.6	29.1	26.6	26.8	30.4	32.8	17
Augustus	762.9	761.6	761.0	761.8	764.5	759.9	25.0	30.4	26.9	27.4	31.3	32.9	25
September	762.0	760.6	760.3	761.0	762.9	758.5	25.7	31.3	28.1	28.4	32.6	34.4	28
October	761.3	759.9	759.6	760.3	761.9	757.8	25.8	31.5	27.6	28.3	32.8	34.0	2, 29
November	760.5	759.0	758.6	759.4	762.5	756.7	25.3	30.4	27.1	27.6	31.7	33.7	8
December	760.6	759.5	759.0	759.7	761.8	757.7	24.7	30.1	26.7	27.2	31.4	33.5	8
Jaar	761.9	760.8	760.3	761.0	764.7	756.7	25.0	29.5	26.8	27.1	30.8	34.4	—

1) Hoogte boven zee 3.7 m.

TE PARAMARIBO IN 1946

Celsius			Dampdrukking in mm						Betrekkelijke vochtigheid in procenten				Bewolking (0—10)				Regenval in mm			
Minimum			8	14	18	M	Max.	Min.	8	14	18	M	Min.	8	14	18	M	Totaal	Max.	Datum
M	Abs.	Datum																		
22.4	20.1	6	20.9	20.6	20.8	20.8	22.8	17.3	93	71	84	83	53	6.1	7.6	6.3	6.7	192.3	60.4	10
22.7	20.4	27	21.1	20.4	20.2	20.6	23.5	18.1	92	68	79	80	56	6.6	7.0	5.6	6.4	138.7	48.9	7
22.7	20.6	31	21.1	20.9	20.6	20.9	23.2	18.0	91	70	80	80	55	5.7	6.9	6.3	6.3	125.5	22.0	27
23.3	22.1	8	22.3	22.3	21.6	22.1	25.2	18.6	93	78	83	85	59	7.7	7.2	7.4	7.4	242.4	39.7	15
23.4	22.1	23	22.0	22.6	22.2	22.3	25.7	17.7	94	85	89	89	68	6.7	8.9	8.4	8.0	611.1	79.8	13
23.0	22.1	28	21.4	22.1	22.5	22.0	25.3	17.1	91	77	87	85	47	3.7	7.2	6.3	5.7	207.4	53.3	7
22.6	21.0	2	21.0	21.8	22.1	21.6	24.0	18.7	91	74	86	84	54	4.2	6.5	6.3	5.7	292.0	85.7	22
22.8	21.0	9	20.9	21.3	22.0	21.4	24.4	17.4	89	67	83	80	49	2.7	5.9	5.4	4.7	198.2	50.7	9
23.3	22.1	1	21.6	21.1	21.4	21.4	24.4	17.1	88	63	76	76	46	3.0	6.3	4.4	4.6	109.2	15.9	11
23.0	22.2	10	21.2	21.2	20.9	21.1	24.5	17.4	86	63	77	75	46	3.5	6.1	4.5	4.7	143.9	44.7	12
22.8	21.6	28	21.7	21.5	22.3	21.8	25.8	16.4	91	67	84	81	49	4.8	6.7	4.9	5.5	135.3	55.7	22
22.7	21.4	14	21.3	20.9	21.2	21.1	24.0	17.0	92	67	81	80	46	5.1	6.8	4.5	5.5	69.5	16.3	27
22.9	20.1	—	21.4	21.4	21.5	21.4	25.8	16.4	91	71	82	81	46	5.0	6.9	5.9	5.9	2465.5	85.7	—

REGENVAL IN SURINAME UITGEDRUKT IN MM¹⁾

1940	Jan.	Febr.	Mrt.	April	Mei	Juni	Juli	Aug.	Sept.	Oct.	Nov.	Dec.	Jaar
<i>Stroomgebied Corantijn</i>													
Kapoeri	123.1	8.8	36.8	77.5	237.6	314.2	96.9	359.9	32.7	36.3	70.6	265.9	1660.3
<i>Stroomgebied Nickerie</i>													
Nw. Nickerie	39.9	17.2	32.7	12.3	90.9	237.5	246.7	171.5	72.8	33.6	64.0	291.6	1310.7
Paradise	62.0	16.0	58.5	20.5	153.0	223.0	301.0	219.5	86.0	31.0	51.0	302.0	1523.5
Gemiddeld	50.9	16.6	45.6	16.4	121.9	230.2	273.8	195.5	79.4	32.3	57.5	296.8	1417.1
<i>Noordkust tussen Nickerie en Coppename</i>													
Leasowes.	—	—	—	—	134.5	—	180.2	131.5	62.7	44.8	31.1	298.7	—
Totness (Coronie)	32.9	17.8	53.9	28.5	124.9	169.8	157.2	155.1	62.5	59.0	63.2	283.5	1208.3
Hamilton	68.4	16.8	49.1	32.9	103.7	202.8	168.5	178.2	66.5	72.5	46.5	285.1	1291.0
Gemiddeld	50.6	17.3	51.5	30.7	121.0	186.3	168.6	154.9	63.9	58.8	46.9	289.1	1249.6
<i>Stroomgebied Saramacca</i>													
Carel François	82.0	8.4	40.4	70.6	210.1	335.1	300.2	184.9	53.2	160.7	68.4	307.3	1821.3
Groningen	93.4	7.7	40.1	138.7	256.9	435.8	195.8	291.6	45.1	59.9	76.2	226.5	1867.7
Kwakoegron	53.0	20.0	45.9	139.9	344.7	357.6	220.0	153.2	28.9	56.0	126.0	210.0	1755.2
de Jong Noord	74.0	16.5	58.5	132.5	322.0	416.0	224.0	193.0	63.0	59.5	126.5	192.0	1877.5
Kwattahede	52.8	—	97.5	146.5	362.0	—	195.0	156.0	32.0	45.5	—	274.8	—
Gemiddeld	71.0	13.2	56.5	125.6	299.1	386.1	227.0	195.7	44.4	76.3	99.3	242.1	1830.4
<i>Stroomgebied Suriname rivier</i>													
De Morgenstond	67.9	1.9	20.3	98.6	274.3	386.3	295.7	236.5	146.9	28.8	67.5	134.4	1759.1
Geyersvljht	71.3	5.9	18.7	91.6	309.3	419.6	268.6	247.8	150.6	60.8	88.6	116.6	1849.4
Nw Amsterdam	68.2	6.1	35.8	110.2	246.8	382.2	239.7	211.0	90.7	45.0	74.0	182.1	1691.8
Paramaribo (cultuur- tuin)	83.3	4.9	25.5	114.9	283.2	470.1	273.4	236.4	108.7	59.0	110.3	127.4	1897.1
Jagtlust	88.0	4.0	21.5	108.9	334.0	388.0	278.5	233.0	94.0	63.2	46.5	171.0	1830.6
Domburg	82.5	10.0	49.5	115.0	298.0	354.5	181.5	195.0	105.0	78.5	83.5	149.0	1702.0
Lelydorp	79.8	7.0	58.9	116.4	280.6	319.0	136.7	229.6	42.8	80.8	48.0	153.6	1553.2
Gr. Chatillon	62.3	7.3	50.0	120.7	419.0	181.5	225.8	294.7	103.6	81.0	57.7	267.8	1871.4
Republiek	87.0	11.5	20.0	94.0	278.5	307.0	358.5	141.0	62.0	147.0	53.0	145.2	1704.7
Zanderij I	57.0	4.5	43.8	139.5	373.0	294.5	240.5	110.6	57.0	152.9	44.1	176.4	1693.8
Sectie O	54.0	16.0	55.0	159.8	251.5	321.8	173.5	82.3	50.0	42.9	65.0	177.9	1449.7
Brownsweg	118.5	14.5	54.8	158.1	411.1	346.9	193.9	218.5	91.5	69.4	142.8	174.7	1994.7
Kabelstation	93.0	18.0	85.2	143.3	307.5	364.0	158.0	115.0	83.5	69.5	111.0	165.5	1713.5
Sikakamp	123.4	81.3	71.3	160.9	369.2	298.5	155.9	148.7	23.5	33.5	85.2	281.3	1832.7
Dam	97.5	46.5	71.5	213.0	423.7	330.5	70.0	107.0	77.5	44.0	76.5	213.5	1771.2
Batopasie	100.0	106.7	92.6	249.8	370.9	456.8	110.9	193.2	—	—	55.1	304.6	—
Gemiddeld	83.4	21.6	48.4	137.2	326.9	351.3	210.1	187.4	85.8	70.4	75.5	183.8	1754.3

1) — Betekent geen waarnemingen.

geen regen.

REGENVAL IN SURINAME UITGEDRUKT IN MM

1940	Jan.	Febr.	Mrt.	April	Mei	Juni	Juli	Aug.	Sept.	Oct.	Nov.	Dec.	Jaar
<i>Stroomgebied Commewijne</i>													
Berlijn	54.7	12.5	28.5	137.8	246.7	299.0	269.2	148.8	81.7	60.8	65.0	231.3	1636.0
de Maasstroom	66.8	7.2	37.3	133.4	254.3	324.5	265.3	190.3	81.0	56.5	57.2	231.1	1704.9
Mariënborg	66.0	5.5	15.5	117.0	275.0	386.0	310.0	197.0	102.0	66.0	144.0	184.0	1868.0
Wederzorg	88.9	2.0	21.7	129.8	372.7	429.9	360.5	165.2	91.0	80.7	110.0	183.3	2035.7
Alliance	75.5	2.0	48.0	147.4	321.4	391.0	278.4	149.7	46.3	46.6	104.2	201.6	1812.1
Slootwijk	94.5	10.3	16.7	169.6	316.5	422.1	223.4	198.6	94.3	171.3	95.0	252.4	2064.7
Moengo	159.7	12.2	55.0	103.9	396.5	348.1	262.2	235.0	72.4	62.4	87.6	256.0	2051.0
Gemiddeld	86.6	7.4	31.8	134.1	311.9	371.5	281.3	183.5	81.2	77.8	94.7	220.0	1881.8
<i>Stroomgebied Marowijne</i>													
Galibi	72.2	22.9	91.9	74.6	492.5	182.0	242.8	169.5	88.7	70.5	196.6	298.7	2002.9
Albina	78.8	13.1	81.2	41.0	365.5	249.5	135.5	61.0	100.0	10.2	169.4	176.5	1481.7
Placer Lawa	123.9	153.0	147.8	233.4	494.3	236.8	109.1	144.5	35.3	16.3	90.7	279.0	2064.1
Sajé	143.6	95.5	44.0	179.5	404.6	384.0	101.0	186.1	55.5	57.0	78.5	194.0	1923.3
Gemiddeld	104.6	71.1	91.2	132.1	439.2	263.1	147.1	140.3	69.9	38.5	133.8	237.0	1868.0
1941													
<i>Stroomgebied Corantijn</i>													
Kapoeri	179.4	64.5	105.4	147.5	338.4	285.4	136.4	116.4	38.0	160.5	109.3	246.5	1927.7
<i>Stroomgebied Nickerie</i>													
Nw. Nickerie	395.2	19.7	46.8	71.7	265.7	414.7	218.5	262.0	140.4	145.6	98.8	226.1	2305.2
Paradise	255.0	133.0	74.0	—	245.5	420.5	261.2	273.4	75.2	111.0	125.7	204.3	—
Gemiddeld	325.1	76.3	60.4	71.7	255.6	417.6	239.8	267.7	107.8	128.3	112.2	215.2	2277.7
<i>Noordkust tussen Nickerie en Coppename</i>													
Leasowes	310.4	36.6	72.2	126.1	199.1	337.4	98.3	191.8	14.3	106.4	4.3	209.1	1706.0
Totness (Coronie)	391.8	29.0	104.5	148.5	183.5	255.8	119.0	123.4	13.5	106.3	21.5	181.5	1678.3
Hamilton	362.9	23.5	87.5	184.8	158.0	356.9	190.9	225.0	15.9	143.0	24.8	240.0	2013.2
Gemiddeld	355.0	29.7	88.1	153.1	180.2	316.7	136.1	180.1	14.6	118.6	16.9	210.2	1799.2
<i>Stroomgebied Saramacca</i>													
Carel Francois	244.1	51.9	85.7	168.3	261.3	461.6	303.6	196.9	54.8	130.3	43.5	254.3	2256.3
Groningen	182.8	48.4	82.2	141.4	385.5	446.8	158.3	135.5	39.4	120.9	80.5	318.2	2139.9
Kwakoegron	203.5	154.5	63.5	133.6	260.6	495.0	195.5	169.0	35.0	118.0	14.0	251.0	2093.2
de Jong Noord	257.5	129.7	41.0	189.5	306.0	435.5	189.0	129.0	67.5	100.0	35.0	190.5	2070.2
Kwattahede	333.6	194.0	34.5	167.6	304.3	497.5	109.0	105.5	45.7	28.5	47.4	305.7	2173.3
Gemiddeld	244.3	115.7	61.4	160.1	303.5	467.3	191.1	147.2	48.5	99.5	44.1	263.9	2146.6

REGENVAL IN SURINAME UITGEDRUKT IN MM

1941	Jan.	Febr.	Mrt.	April	Mei	Juni	Juli	Aug.	Sept.	Oct.	Nov.	Dec.	Jaar
<i>Stroomgebied Surinamerivier</i>													
De Morgenstond	175.2	58.4	70.4	173.8	358.3	302.7	157.1	216.1	37.6	198.5	100.8	226.8	2075.7
Geyersvljht	165.4	37.1	66.2	171.1	369.1	252.9	142.8	154.8	25.8	229.7	106.9	219.9	1941.7
Nw. Amsterdam	187.2	44.4	66.0	144.2	432.9	251.0	152.9	213.0	18.0	174.1	54.4	221.1	1959.2
Paramaribo (cultuur- tuin)	186.2	45.2	72.7	187.1	439.9	258.0	177.9	145.2	44.4	167.3	77.3	247.3	2048.5
Jagtlust	180.5	35.5	66.5	205.5	331.0	304.5	198.0	113.2	25.0	176.0	69.0	219.0	1923.7
Domburg	191.0	62.0	62.5	192.5	413.0	387.5	177.5	144.0	5.0	113.5	69.5	227.0	2045.0
Lelydorp	137.9	36.2	61.4	210.8	448.9	540.5	157.6	199.4	13.9	149.2	55.6	230.9	2242.3
Gr. Chatillon	185.8	67.9	80.5	233.9	391.4	390.3	128.0	160.9	55.5	97.6	39.7	249.4	2080.9
Republiek	147.5	76.0	56.0	168.0	380.6	379.0	197.0	214.5	12.0	94.5	46.5	264.0	2035.6
Zanderij I	158.1	78.8	68.1	165.5	303.5	397.8	174.5	197.2	25.7	139.6	41.2	194.4	1944.4
Sectie 0	227.2	99.3	82.5	167.1	309.5	424.0	187.9	174.8	10.5	82.9	51.2	332.8	2149.7
Brownsweg	299.2	162.3	72.7	201.5	332.8	472.4	268.2	214.5	78.4	169.3	39.5	227.7	2538.5
Kabelstation	374.5	156.5	76.0	129.5	320.5	369.5	226.0	124.5	79.5	162.0	51.0	369.5	2439.0
Sikakamp	303.5	125.7	86.4	179.2	301.9	460.7	140.3	137.2	59.2	131.5	37.7	273.8	2237.1
Dam	314.5	72.5	71.0	157.0	364.5	495.5	139.0	196.5	88.5	140.5	39.0	302.0	2380.5
Botopasie	387.4	150.8	117.1	—	—	310.3	114.1	147.5	—	—	41.5	236.0	—
Sarakreek	—	—	—	—	—	—	317.4	158.9	91.8	98.7	38.6	298.0	—
Gemiddeld	226.3	81.8	73.5	179.1	366.5	374.8	179.8	171.3	41.9	145.3	56.4	255.3	2136.1
<i>Stroomgebied Commewijne</i>													
Berlijn	164.7	42.3	66.9	106.3	390.3	248.1	180.7	197.8	16.6	100.4	117.2	192.7	1824.0
de Maasstroom	162.9	37.5	65.6	135.0	421.6	272.8	179.2	172.6	17.6	79.4	82.6	222.6	1849.4
Marienburg	165.0	42.0	61.0	149.0	453.0	288.0	198.0	201.0	11.0	145.0	86.0	247.0	2046.0
Wederzorg	156.2	41.9	75.8	136.7	416.7	271.6	194.3	269.7	25.5	127.0	107.6	321.5	2144.5
Alliance	183.4	52.7	83.6	121.0	423.2	241.4	206.2	296.9	48.6	168.3	58.7	146.1	2030.1
Slootwijk	169.0	49.8	89.0	202.4	455.4	322.3	174.1	242.9	24.5	192.9	101.3	233.0	2256.6
Moengo	288.0	89.1	74.2	176.7	347.1	516.2	254.1	188.5	106.2	89.8	103.9	252.1	2485.9
Gemiddeld	184.2	50.8	73.7	146.7	415.3	308.6	198.1	224.2	35.7	129.0	93.9	230.7	2090.9
<i>Stroomgebied Marowijne</i>													
Albino	191.3	144.2	152.5	221.1	483.3	395.9	107.0	105.0	6.5	24.6	39.7	219.3	2090.4
Placer Lawa	307.9	106.4	55.7	205.7	306.6	324.9	136.8	124.9	54.5	144.7	64.3	176.0	2008.4
Sajé	403.5	102.0	85.0	151.5	315.0	513.0	168.0	143.5	52.5	141.0	77.8	78.5	2231.3
Gemiddeld	300.9	117.5	97.7	192.8	368.3	411.3	137.3	124.5	37.8	103.4	60.6	157.9	2110.0
1942													
<i>Stroomgebied Corantijn</i>													
Kapoeri	131.4	85.5	164.3	173.2	235.8	145.9	293.1	267.4	28.2	67.9	36.2	264.9	1893.8
<i>Stroomgebied Nickerie</i>													
Nw. Nickerie	73.8	90.8	36.3	104.4	246.2	339.0	392.7	139.3	29.8	35.4	12.7	294.2	1794.6
Paradise	45.0	121.5	60.3	134.4	261.8	365.0	415.2	163.3	40.0	99.2	—	397.3	—
Gemiddeld	59.4	106.2	48.3	119.4	254.0	352.0	404.0	151.3	34.9	67.3	12.7	345.8	1955.3

REGENVAL IN SURINAME UITGEDRUKT IN MM

1942	Jan.	Febr.	Mrt.	April	Mei	Juni	Juli	Aug.	Sept.	Oct.	Nov.	Dec.	Jaar
<i>Noordkust tussen Nickerie en Coppename</i>													
Leasowes	43.9	123.5	28.3	156.5	167.7	347.3	168.2	115.6	33.5	30.2	5.9	284.2	1504.8
Totness (Coronie)	28.7	145.2	21.5	157.6	181.7	357.3	219.4	55.2	14.5	47.0	—	328.6	—
Hamilton	25.5	128.0	25.1	184.5	162.8	382.1	162.0	—	—	—	—	303.5	—
Gemiddeld	32.7	132.2	25.0	166.2	170.7	362.2	183.2	85.4	24.0	38.6	5.9	305.4	1531.5
<i>Stroomgebied Saramacca</i>													
Carel François	56.9	112.2	60.0	327.9	294.6	312.5	224.4	168.9	130.4	25.2	23.3	213.1	1949.4
Groningen	61.9	123.7	92.1	366.1	363.1	334.1	210.0	127.0	110.3	29.5	37.4	326.4	2171.6
Kwakoegron	108.0	123.0	87.0	262.0	403.1	371.5	442.7	123.5	66.0	31.0	77.5	339.5	2434.8
de Jong Noord	47.5	90.0	147.0	221.5	364.0	342.0	419.0	164.0	54.0	57.0	15.0	228.0	2149.0
Kwattahede	64.7	81.0	137.6	215.8	358.2	242.1	285.5	117.5	92.0	6.5	20.0	357.1	1978.0
Gemiddeld	67.8	106.0	104.7	278.6	354.6	320.4	316.3	140.2	90.5	29.8	34.6	292.8	2136.3
<i>Stroomgebied Surinamerivier</i>													
De Morgenstond	42.2	102.0	43.1	227.7	306.0	483.2	268.0	194.9	134.5	93.0	24.4	186.5	2105.5
Geijersvljt	49.9	104.6	36.3	222.9	305.6	409.9	255.7	173.2	87.2	99.5	23.4	191.9	1960.1
Nw. Amsterdam	56.3	135.8	50.6	270.0	368.9	403.9	233.5	230.3	104.3	123.9	17.3	211.6	2206.4
Paramaribo (Cultuur- tuin)	52.5	112.8	46.3	233.3	353.1	407.7	259.8	143.2	95.7	94.9	44.7	247.3	2091.3
Jagtlust	66.0	101.5	76.0	241.5	296.0	354.0	337.5	239.0	102.0	118.0	22.5	309.5	2263.5
Domburg	100.5	89.0	69.0	189.0	341.0	316.0	292.0	227.0	97.5	103.5	42.5	383.5	2250.5
Lelydorp	197.4	271.5	205.5	445.1	543.7	352.7	327.7	438.1	167.3	152.1	35.5	283.4	3420.0
Gr. Chatillon	77.7	92.3	73.3	179.6	302.7	349.8	232.4	209.6	57.5	94.8	28.0	294.7	1992.4
Republiek	78.0	115.0	95.0	229.0	200.0	400.0	357.5	174.5	43.8	48.0	73.5	282.5	2096.8
Zanderij I	86.9	110.7	84.2	163.0	274.3	312.5	323.6	—	—	—	—	—	—
Sectie 0	32.8	96.3	128.0	256.3	281.2	—	279.6	104.2	68.4	29.3	30.5	265.3	—
Brownsweg	116.0	132.1	117.3	210.8	409.9	311.7	354.8	226.2	48.5	17.8	16.2	304.5	2265.8
Kabelstation	48.5	110.0	116.5	265.0	338.5	264.0	402.5	201.0	19.5	22.5	28.0	276.5	2092.5
Sikakamp	131.4	168.0	131.9	289.0	254.0	352.6	278.8	92.2	22.5	58.1	48.2	247.7	2074.4
Dam	44.5	174.5	119.5	334.5	312.0	275.0	278.5	195.5	60.5	89.5	36.0	247.0	2167.0
Botopasi	71.2	91.2	217.3	—	261.5	—	225.4	—	—	—	—	382.0	—
Sarakreek	122.7	109.8	234.3	239.2	341.0	260.3	—	—	—	—	—	—	—
Gemiddeld	80.9	124.5	108.5	249.7	322.9	350.2	294.2	203.5	79.2	81.8	33.6	274.3	2203.3
<i>Stroomgebied Commewijne</i>													
Berlijn	41.5	147.8	43.5	189.2	322.4	338.2	277.8	237.5	83.5	64.8	16.7	272.2	2035.1
de Maastroom	54.5	143.7	45.8	270.6	413.3	345.8	280.1	251.1	96.1	64.3	16.7	299.0	2281.0
Mariënborg	68.0	109.0	41.0	229.0	368.0	418.0	347.0	188.0	45.0	122.0	31.0	275.0	2241.0
Wederzorg	75.0	115.3	43.4	311.9	357.0	405.9	357.2	206.6	86.2	53.1	46.7	397.1	2455.4
Alliance	66.9	141.1	59.1	310.5	327.1	282.1	199.1	171.2	77.0	65.0	47.3	228.1	1974.5
Slootwijk	60.3	132.9	59.5	339.5	340.3	296.9	335.2	145.6	36.9	81.7	69.2	327.2	2225.2
Moengo	54.4	107.8	77.7	331.1	319.4	242.7	218.1	190.1	52.5	68.1	32.7	363.7	2058.3
Gemiddeld	60.1	128.2	52.9	283.1	349.6	332.8	287.8	198.6	68.2	74.1	37.2	308.2	2181.5

REGENVAL IN SURINAME UITGEDRUKT IN MM

1942	Jan.	Febr.	Mrt.	April	Mei	Juni	Juli	Aug.	Sept.	Oct.	Nov.	Dec.	Jaar
<i>Stroomgebied Marowijne</i>													
Galibi	67.2	72.3	59.8	303.4	514.1	325.5	309.2	94.1	23.5	49.0	18.0	435.9	2272.0
Albina	54.0	6.0	318.5	145.5	148.5	249.9	238.1	171.5	52.0	62.8	58.2	347.1	1852.1
Placer Lawa	106.9	194.3	367.9	388.7	480.1	300.8	218.6	143.9	36.0	28.6	6.5	353.3	2607.6
Sajé	59.5	223.0	311.5	241.0	318.5	278.5	267.0	138.5	94.0	55.5	5.0	269.5	2261.5
Gemiddeld	71.9	123.9	264.4	269.6	365.3	288.7	258.2	137.0	51.4	49.0	21.9	347.0	2248.3
1943													
<i>Stroomgebied Corantijn</i>													
Kapoeri	229.0	110.8	296.8	160.2	319.0	284.0	226.4	220.6	56.1	27.5	115.0	195.4	2240.8
<i>Stroomgebied Nickerie</i>													
Nw. Nickerie	299.8	67.2	234.2	163.7	255.4	247.5	223.5	133.3	24.2	54.0	113.6	169.5	1985.9
Paradise	266.1	89.7	244.8	167.6	248.0	198.7	328.3	113.4	25.8	20.5	180.1	173.2	2056.2
Gemiddeld	283.0	78.4	239.5	165.6	251.7	223.1	275.9	123.4	25.0	37.2	146.8	171.4	2021.0
<i>Noordkust tussen Nickerie en Coppename</i>													
Leasowes	183.6	147.8	228.6	85.7	192.4	178.6	257.3	51.6	4.7	42.2	126.7	141.7	1640.9
Hamilton	132.2	92.5	310.1	71.8	180.6	190.7	179.9	98.5	9.2	14.4	296.2	238.0	1814.1
Gemiddeld	157.9	120.2	269.4	78.8	186.5	184.6	218.6	75.0	7.0	28.3	211.4	189.8	1727.5
<i>Stroomgebied Saramacca</i>													
Carel François	169.4	222.9	266.2	101.3	285.4	300.5	168.8	119.7	20.6	27.5	189.4	179.9	2051.6
Groningen	249.2	246.4	319.0	106.4	225.4	173.8	333.0	77.0	71.5	2.1	161.6	259.5	2224.9
Kwakoegeon	352.0	307.0	578.0	208.5	277.0	273.0	291.5	72.0	149.0	19.5	133.0	301.5	2962.0
De Jong Noord	368.5	231.0	613.2	213.5	279.7	245.5	372.5	120.0	114.0	13.5	140.5	263.0	2974.9
Kwatahede	290.8	174.2	555.9	176.3	335.6	289.5	214.3	189.3	6.0	1.5	137.4	263.1	2633.9
Gemiddeld	286.0	236.3	466.5	161.2	280.6	256.5	276.0	115.6	72.2	12.8	152.4	253.4	2569.5
<i>Stroomgebied Surinamerivier</i>													
De Morgenstond	248.3	272.8	483.5	184.5	196.0	303.7	351.6	94.8	63.9	24.0	102.9	243.4	2569.4
Geijersvlijt	243.9	232.1	457.9	177.3	165.5	243.0	300.0	111.7	81.9	21.4	96.2	256.0	2386.9
Nw. Amsterdam	229.2	223.7	440.7	168.6	208.9	304.9	298.0	170.9	42.3	46.2	120.1	306.0	2559.5
Pparamaribo (Cultuur- tuin)	251.0	244.4	408.5	155.3	172.4	256.7	299.4	118.5	51.6	52.1	133.4	244.9	2388.2
Jagtlust	247.5	262.0	467.0	195.0	252.0	262.0	351.5	130.0	92.0	10.0	204.0	348.0	2821.0
Domburg	306.0	282.0	508.2	367.0	348.5	155.0	291.7	93.5	28.0	97.0	76.5	299.0	2852.4
Lelydorp	401.0	316.4	504.4	240.3	309.8	167.0	346.3	112.8	65.3	4.8	121.2	259.0	2848.3
Gr. Chatillon	301.8	259.7	350.1	276.7	308.5	208.9	301.9	96.7	89.6	19.1	92.0	212.8	2517.8
Republiek	290.5	211.5	467.5	225.0	239.5	207.0	171.0	196.0	111.0	15.0	249.5	228.0	2611.5
Sectie 0	402.6	263.3	559.0	171.0	246.5	273.4	215.0	121.1	91.5	34.0	130.9	284.2	2792.5
Bronsweg	287.6	197.2	565.1	223.5	225.8	237.5	312.1	150.7	124.7	10.7	217.2	318.5	2870.6
Sikakamp	337.6	196.0	509.0	216.2	243.0	389.1	171.1	157.6	62.0	10.1	94.8	196.3	2582.8
Kabelstation	448.0	257.0	558.0	164.5	250.0	224.5	200.5	92.5	53.5	33.0	95.5	292.5	2669.5
Dam	281.0	279.5	531.0	238.0	387.0	332.5	175.8	158.7	46.2	16.5	90.6	261.0	2797.8
Botopasie	207.7	344.5	470.5	320.0	—	358.5	200.5	—	—	—	—	—	—
Onverdacht	—	—	—	—	403.7	203.3	409.0	164.6	7.7	36.2	106.0	253.0	—
Gemiddeld	298.9	256.1	485.4	221.5	263.8	257.9	274.7	131.3	67.4	28.7	128.7	266.8	2681.2

REGENVAL IN SURINAME UITGEDRUKT IN MM

1943	Jan.	Febr.	Mrt.	April	Mei	Juni	Juli	Aug.	Sept.	Oct.	Nov.	Dec.	Jaar
<i>Stroomgebied Commewijne</i>													
Berlijn	214.3	210.1	449.0	188.0	219.1	306.0	264.0	138.1	47.9	24.5	189.8	266.6	2517.4
de Maasstroom	232.4	255.5	542.3	206.1	240.6	346.2	279.3	171.5	42.6	16.0	240.6	297.1	2870.2
Mariënborg	284.0	225.0	529.0	166.0	201.0	334.0	321.0	148.0	45.0	26.0	143.0	306.0	2728.0
Wederzorg	269.0	210.7	654.6	241.5	214.0	321.1	290.1	147.2	33.3	25.5	101.4	—	—
Alliance	291.3	207.5	455.8	227.0	286.3	327.3	290.3	101.3	43.0	25.3	177.5	252.3	2684.9
Paradijs	—	—	441.0	273.0	309.0	353.5	267.5	94.5	21.0	29.5	162.5	234.5	—
Slootwijk	215.8	343.8	616.0	214.0	251.3	362.7	264.0	128.1	43.5	36.1	229.4	271.2	2975.9
Moengo	428.5	299.7	484.8	222.9	334.5	328.2	234.7	100.4	68.5	17.3	153.0	273.3	2945.8
Gemiddeld	276.5	250.3	521.6	217.3	257.0	334.9	276.4	128.6	43.1	25.0	174.6	271.6	2776.9
<i>Stroomgebied Marowijne</i>													
Galibi	425.8	217.1	391.6	148.0	356.0	554.0	354.7	48.0	5.5	9.5	126.8	187.6	2824.6
Albina	367.8	333.5	654.7	334.7	444.0	217.0	152.0	82.5	57.3	33.3	—	—	—
Placer Lawa	349.1	432.2	—	340.6	261.8	204.7	153.3	320.6	81.0	45.6	99.8	221.7	—
Sajé	339.5	308.0	357.0	271.5	340.4	355.0	172.0	168.0	123.0	8.0	158.0	317.0	2917.4
Gemiddeld	370.6	327.7	467.8	273.7	350.6	332.7	208.0	154.8	66.7	24.1	128.2	242.1	2947.0
1944													
<i>Stroomgebied Corantijn</i>													
Kapoeri	117.9	194.1	237.9	254.6	284.3	270.9	264.8	333.1	85.8	1.9	84.0	103.4	2232.7
<i>Stroomgebied Nickerie</i>													
Nw Nickerie	88.9	86.1	87.2	135.5	208.3	407.5	334.7	137.6	128.2	5.2	103.9	120.5	1843.6
Paradise	132.9	161.2	94.5	142.0	199.0	324.5	334.1	—	120.5	9.0	—	—	—
Gemiddeld	110.9	123.6	90.8	138.8	203.6	366.0	334.4	137.6	134.4	7.1	103.9	120.5	1861.6
<i>Noordkust tussen Nickerie en Coppename</i>													
Leasowes	59.7	121.8	136.8	63.5	227.3	147.5	173.5	99.1	83.1	15.3	22.1	88.0	1237.7
Hamilton	57.4	132.4	344.8	92.9	205.4	117.0	311.7	98.1	58.8	—	5.9	—	—
Gemiddeld	58.6	127.1	240.8	78.2	216.4	132.2	242.6	98.6	71.0	15.3	14.0	88.0	1382.8
<i>Stroomgebied Saramacca</i>													
Carel François	146.9	195.2	188.0	122.5	173.6	326.2	349.3	96.3	180.9	8.0	30.5	145.8	1963.2
Groningen	150.6	267.5	365.9	158.9	210.9	293.9	285.6	101.8	215.5	42.6	76.9	95.4	2265.5
Kwakoegron	195.6	223.3	306.5	374.2	392.5	390.8	192.0	92.4	24.2	76.5	37.0	190.0	2495.0
De Jong Noord	170.0	140.0	350.0	246.0	337.0	263.0	125.5	85.5	59.0	90.5	82.0	114.0	2064.5
Kwattahede	131.2	180.5	207.1	218.1	362.1	214.1	125.8	109.0	—	55.0	11.0	61.0	—
Gemiddeld	158.9	201.3	283.5	223.9	295.2	298.0	215.6	97.0	119.9	54.5	47.5	121.2	2116.5

REGENVAL IN SURINAME UITGEDRUKT IN MM

1944	Jan.	Febr.	Mrt.	April	Mei	Juni	Juli	Aug.	Sept.	Oct.	Nov.	Dec.	Jaar
<i>Stroomgebied Surinamerivier</i>													
De Morgenstond . . .	147.6	250.0	227.4	207.6	254.3	298.9	325.3	65.0	109.3	53.3	98.4	66.2	2103.3
Geijersvlijt	123.6	245.6	231.0	250.8	290.4	277.9	331.9	67.5	28.0	35.9	89.3	62.5	2034.4
Nw. Amsterdam	133.9	294.1	208.6	260.5	229.0	363.0	246.4	97.3	87.0	35.0	81.5	66.2	2102.5
Paramaribo (Cultuur- tuin)	126.6	228.9	249.8	218.8	241.8	357.3	215.6	80.4	106.8	52.8	89.2	44.3	2012.3
Jagtlust	145.5	254.0	299.0	159.0	376.0	337.5	417.0	83.0	185.0	49.0	146.0	116.0	2567.0
Domburg	142.1	184.2	331.8	251.4	437.3	246.4	209.1	55.6	76.6	44.6	131.6	75.1	2185.8
Onverdacht	109.0	155.7	229.1	279.7	250.7	282.0	233.4	57.9	99.4	37.5	68.5	105.8	1908.7
Paranam	—	140.6	268.4	309.2	258.1	313.7	193.0	71.5	111.7	12.9	47.4	66.4	—
Lelydorp	149.0	217.1	336.9	289.7	362.4	318.2	243.8	110.4	109.9	18.2	18.8	99.1	2273.5
Gr. Chatillon	167.3	85.2	232.0	236.1	299.0	184.5	135.7	31.4	132.7	59.7	29.9	98.2	1691.7
Republiek	174.5	129.0	278.0	277.0	194.0	356.0	295.0	80.0	87.5	8.0	79.0	116.5	2074.5
Sectie 0	137.5	208.8	311.5	270.5	313.3	415.4	294.7	93.4	78.5	48.0	51.0	66.4	2289.0
Brownsweg	206.4	157.3	229.2	305.0	389.9	366.2	164.6	116.5	43.0	79.0	55.7	76.5	2189.3
Kabelstation	138.0	201.5	182.0	254.5	319.0	269.5	134.5	72.0	58.5	15.0	106.5	108.5	1859.5
Sikakamp	152.4	223.1	214.6	224.7	348.4	306.7	372.1	235.7	85.8	33.0	40.8	149.2	2386.5
Dam	129.4	218.0	225.6	263.3	341.2	344.1	232.0	303.0	91.8	8.7	76.9	128.6	2362.6
Gemiddeld	145.8	200.1	253.4	253.6	306.6	314.8	252.8	101.3	93.2	36.9	75.7	90.3	2124.5
<i>Stroomgebied Commewijne</i>													
Berlijn	117.0	208.8	219.1	163.8	202.5	335.2	301.0	60.9	70.1	26.7	17.5	73.6	1796.2
De Maasstroom	142.1	237.9	343.4	213.2	221.1	340.7	321.1	73.2	58.1	30.6	22.2	98.8	2102.4
Mariënborg	96.0	241.0	214.0	232.0	189.0	289.0	240.0	68.0	41.0	29.0	77.0	59.0	1775.0
Wederzorg	—	245.8	218.7	170.2	253.5	285.2	328.4	139.2	114.1	25.0	53.5	73.4	—
Alliance	142.2	247.2	213.6	176.9	254.7	320.5	249.6	56.3	172.0	13.3	25.1	58.3	1929.7
Paradijs	139.0	234.0	—	—	—	—	—	—	—	—	67.9	112.3	—
Slotwijk	134.7	262.3	210.7	163.8	238.9	353.1	261.5	122.7	83.4	26.0	70.5	85.4	2013.0
Moengo	173.6	198.3	268.1	246.8	273.3	290.1	181.5	78.4	239.6	40.7	52.1	105.1	2147.6
Gemiddeld	134.9	234.4	241.1	195.2	233.3	316.3	269.0	85.5	111.2	27.3	48.2	83.2	1979.6
<i>Stroomgebied Marowijne</i>													
Galibi	126.3	103.8	189.9	156.7	234.0	254.5	92.8	30.5	15.5	10.0	42.0	48.0	1304.0
Albina	163.1	225.6	221.9	263.5	274.8	—	194.5	—	—	—	—	—	—
Placer Lawa	150.1	285.0	140.4	340.7	270.7	196.6	151.0	168.7	106.6	4.9	39.9	—	—
Sajé	152.5	334.8	140.5	358.5	370.5	237.5	275.0	260.5	39.5	28.5	86.5	165.5	2449.8
Gemiddeld	148.0	237.3	173.2	279.8	287.5	229.5	178.3	153.2	53.9	14.5	56.1	106.8	1918.1
1945													
<i>Stroomgebied Corantijn</i>													
Kapoeri	344.6	176.3	146.9	155.5	408.0	495.5	264.7	138.2	75.3	54.2	99.0	153.8	2512.0
<i>Stroomgebied Nickerie</i>													
Nw. Nickerie	247.8	174.5	81.1	67.2	255.5	517.7	286.5	253.8	53.8	45.1	114.9	144.6	2242.5
Paradise	255.8	185.0	90.0	41.5	276.3	401.0	277.0	171.5	21.5	48.0	79.5	166.0	2013.1
Gemiddeld	251.8	179.8	85.6	54.4	265.9	459.4	281.8	212.6	37.6	46.6	97.2	155.3	2128.0

REGENVAL IN SURINAME UITGEDRUKT IN MM

1945	Jan.	Febr.	Mrt.	April	Mei	Juni	Juli	Aug.	Sept.	Oct.	Nov.	Dec.	Jaar
<i>Noordkust tussen Nickerie en Coppename</i>													
Leasowes	284.7	158.2	57.9	72.4	186.6	246.8	119.1	138.3	25.7	7.4	59.5	168.2	1524.8
Friendship	—	—	—	—	—	—	—	—	22.0	22.6	49.4	154.2	—
Hamilton	—	—	—	—	—	—	—	—	7.3	11.5	43.3	201.8	—
Gemiddeld	284.7	158.2	57.9	72.4	186.6	246.8	119.1	138.3	18.3	13.8	50.7	174.7	1521.5
<i>Stroomgebied Saramacca</i>													
Carel François	176.2	151.5	90.5	93.9	339.1	432.8	150.9	168.5	27.8	76.5	58.6	153.1	1919.4
Groningen	257.4	208.2	148.2	101.0	370.7	295.6	185.6	352.3	57.5	104.1	141.9	232.3	2454.8
Kwakoegron	284.2	169.9	190.2	153.4	269.9	342.0	203.5	70.7	28.0	3.5	170.5	362.7	2248.5
De Jong Zuid	266.0	200.4	207.5	153.0	279.5	496.2	289.5	105.8	34.5	34.0	71.5	185.6	2323.5
Gemiddeld	246.0	182.5	159.1	125.3	314.8	391.6	207.4	174.3	37.0	54.5	110.6	233.4	2236.5
<i>Stroomgebied Surinamerivier</i>													
De Morgenstond	287.0	255.6	224.7	116.1	520.7	565.9	247.6	220.6	13.7	102.5	159.3	224.2	2937.9
Geijersvljt	290.3	250.3	137.5	71.6	325.2	478.6	259.0	207.6	15.0	122.4	192.0	237.2	2586.7
Nw. Amsterdam	294.1	238.3	191.6	93.9	360.8	540.7	194.5	203.3	16.5	36.1	101.5	139.7	2411.0
Paramaribo (Cultuur- tuin)	270.9	223.1	155.1	97.8	364.0	463.7	201.2	166.6	12.9	38.4	135.2	224.5	2353.4
Jagtlust	267.0	203.5	198.5	68.5	321.0	505.0	289.0	231.0	64.0	83.0	130.2	231.4	2592.1
Domburg	260.6	235.5	109.0	127.5	302.4	266.1	320.1	151.6	5.5	39.5	97.5	192.5	2107.8
Onverwacht	246.9	161.9	157.5	136.3	324.2	324.3	149.3	126.2	48.9	46.4	134.5	278.2	2134.6
Paranam	218.0	177.9	118.4	134.2	330.6	364.7	229.9	167.0	39.5	106.3	104.1	283.8	2274.4
Lelydorp	223.0	159.9	234.1	92.9	391.3	242.6	371.7	186.0	34.6	46.5	146.7	215.8	2345.1
Gr. Chatillon	201.4	91.3	230.5	108.2	325.1	356.1	86.3	87.0	28.0	29.2	52.8	227.0	1822.9
Republiek	237.5	194.5	164.0	135.5	286.0	364.5	185.5	195.0	50.0	79.5	92.5	267.5	2252.0
Sectie O	211.8	200.4	136.3	117.0	354.0	401.0	239.3	149.5	.	8.5	182.0	418.5	2418.3
Brownsweg	232.1	125.5	221.7	195.8	322.4	667.6	261.6	147.3	81.5	16.0	142.3	225.3	2639.1
Kabelstation	211.6	69.5	113.5	257.7	342.9	527.2	229.0	94.2	48.5	70.5	39.0	368.5	2372.1
Sikakamp	268.5	170.5	128.5	289.6	255.9	478.6	171.0	155.3	9.0	48.7	59.4	353.1	2388.1
Dam	238.7	98.6	164.7	248.4	413.5	473.9	179.1	134.3	10.8	64.4	46.7	183.1	2256.2
Gemiddeld	247.5	178.5	167.8	143.2	346.3	438.8	225.9	163.9	29.9	58.6	113.5	254.4	2368.3
<i>Stroomgebied Commewijne.</i>													
Berlijn	263.1	260.0	182.8	102.0	403.0	516.5	147.4	209.7	33.2	115.9	40.5	187.7	2461.8
De Maasstroom	266.1	258.9	202.2	100.8	437.8	567.1	270.0	188.9	30.7	115.6	32.9	185.3	2656.3
Mariënborg	266.0	278.0	165.0	73.0	418.0	436.0	132.0	99.0	21.0	51.0	59.0	165.0	2163.0
Wederzorg	295.2	249.5	208.8	100.6	348.1	555.2	92.6	177.7	23.3	73.3	98.1	222.6	2445.0
Alliance	289.8	204.8	171.4	110.3	344.6	553.1	156.5	97.3	9.2	14.9	68.1	255.2	2275.2
Paradijs	343.5	254.7	125.4	110.1	318.9	304.6	186.1	161.0	18.5	47.0	33.0	233.1	2135.9
Slootwijk	277.0	215.0	163.4	125.9	308.8	415.6	99.6	99.1	1.9	89.6	121.0	222.9	2139.8
Moengo	267.2	307.5	200.2	166.3	350.3	282.0	225.2	191.9	30.5	89.0	134.9	410.7	2655.7
Gemiddeld	283.5	253.6	177.4	111.1	366.2	453.8	163.7	153.1	21.0	74.5	73.4	235.3	2366.6

REGENVAL IN SURINAME UITGEDRUKT IN MM

1945	Jan.	Febr.	Mrt.	April	Mei	Juni	Juli	Aug.	Sept.	Oct.	Nov.	Dec.	Jaar
<i>Stroomgebied Marowijne</i>													
Galibi	232.1	330.5	115.4	313.2	342.3	274.2	149.8	37.7	0.5	11.5	32.1	239.7	2079.0
Albina	—	—	—	—	245.4	281.0	289.1	135.0	78.5	1.2	143.2	344.2	—
Placer Lawa	230.2	247.3	256.1	268.9	592.8	230.8	296.2	79.7	43.7	37.4	96.5	305.0	2684.6
Sajé	211.5	144.5	90.5	241.9	400.0	412.5	174.0	164.0	45.0	51.0	69.0	233.0	2236.9
Gemiddeld	224.6	240.8	154.0	274.7	395.1	299.6	227.3	104.1	41.9	25.3	85.2	280.5	2353.1
1946													
<i>Stroomgebied Corantijn</i>													
Kapoeri	190.5	164.8	101.1	303.8	395.8	198.7	255.2	227.8	63.6	190.4	74.4	—	—
<i>Stroomgebied Nickerie</i>													
Nw. Nickerie	69.8	186.2	27.6	215.8	291.7	233.3	182.0	146.9	35.9	51.1	44.9	45.4	1530.6
Paradise	51.8	171.0	47.3	177.3	284.5	154.1	232.2	116.0	83.6	16.3	70.8	88.2	1493.1
Gemiddeld	60.8	178.6	37.4	196.6	288.1	193.7	207.1	131.4	59.8	33.7	57.8	66.8	1511.8
<i>Noordkust tussen Nickerie en Coppename</i>													
Leasowes	73.0	182.5	41.0	170.7	258.1	124.5	255.8	110.7	35.0	50.6	34.1	49.0	1385.0
Friendship	126.5	145.2	52.4	173.3	284.2	140.3	252.1	112.2	69.2	73.1	7.2	29.1	1464.8
Hamilton	135.7	71.2	51.6	167.7	309.2	104.1	298.7	197.3	26.1	84.2	37.9	17.7	1501.4
Gemiddeld	111.7	133.0	48.3	170.6	283.8	123.0	268.9	140.1	43.4	69.3	26.4	31.9	1450.4
<i>Stroomgebied Saramacca</i>													
Carel François	107.9	77.4	113.7	311.4	508.3	139.6	329.7	258.2	58.4	67.0	63.2	84.9	2119.7
Groningen	231.8	150.3	204.7	292.6	468.6	161.3	243.8	163.9	51.8	30.8	83.4	85.9	2168.9
Kwakoegron	210.2	94.5	181.6	274.8	417.1	262.2	261.0	200.4	54.0	—	—	—	—
De Jong Noord.	190.5	125.5	223.5	433.0	511.5	204.5	385.5	261.0	28.5	20.5	77.5	176.5	2638.0
Gemiddeld	185.1	111.9	180.9	328.0	476.4	191.9	305.0	220.9	48.2	39.4	74.7	115.8	2278.2
<i>Stroomgebied Surinamerivier</i>													
De Morgenstond	147.9	124.7	110.2	224.9	532.7	205.3	240.9	155.0	55.9	145.3	118.0	90.0	2150.8
Geijersvljht	174.2	121.4	148.6	225.6	556.0	234.4	259.8	146.4	68.2	117.6	101.8	96.3	2250.3
Nw. Amsterdam	157.4	136.3	84.7	293.7	636.7	176.3	275.1	90.4	10.2	120.2	101.7	108.3	2191.0
Paramaribo (Cultuur- tuin)	192.3	138.7	125.5	242.4	611.1	207.4	292.0	198.2	109.2	143.9	135.3	69.5	2465.5
Domburg	165.5	74.4	57.0	220.5	376.9	245.6	219.9	145.0	41.5	44.0	90.5	116.5	1797.3
Onverdacht	273.6	86.2	103.9	311.4	444.9	237.9	215.6	142.3	60.2	36.1	88.1	134.6	2134.8
Paramam	221.9	29.8	87.5	318.5	443.6	187.2	194.1	185.7	—	—	—	—	—
Lelydorp	204.3	98.2	66.6	329.0	542.0	369.1	309.1	256.9	79.7	46.5	80.8	87.1	2469.3
Gr. Chatillon	307.1	92.7	95.2	265.4	430.6	163.0	233.9	219.1	10.2	27.0	62.9	138.8	2045.9
Republiek	200.0	78.0	114.5	257.5	466.0	202.0	207.0	238.5	51.5	92.5	130.5	188.0	2226.0
Sectie 0	419.5	198.0	364.9	661.5	548.6	248.2	164.0	297.2	29.2	135.1	78.5	273.4	3418.1
Bronsweg	240.5	96.7	168.6	282.6	451.0	413.5	451.1	259.5	37.5	51.5	143.0	152.3	2747.8
Kabelstation	217.0	154.0	180.2	255.0	352.9	140.6	227.0	156.5	27.0	33.0	146.0	224.2	2113.4
Sikakamp	305.5	149.1	170.4	352.5	411.8	269.2	312.0	196.4	48.5	83.5	97.1	138.4	2534.4
Dam	358.6	275.5	202.5	675.1	446.7	296.2	271.9	165.4	46.8	44.2	76.5	104.8	2964.2
Gemiddeld	239.0	123.6	138.7	327.7	483.4	239.7	258.2	190.2	48.3	80.0	103.6	137.3	2369.7

REGENVAL IN SURINAME UITGEDRUKT IN MM

1946	Jan.	Febr.	Mrt.	April	Mei	Juni	Juli	Aug.	Sept.	Oct.	Nov.	Dec.	Jaar
<i>Stroomgebied Commewijne</i>													
Berlijn	148.9	114.9	127.1	242.6	648.0	178.3	370.5	81.5	30.2	53.5	105.9	78.2	2179.6
De Maasstroom	167.3	135.4	102.7	287.9	693.6	183.3	379.0	86.3	19.8	50.8	117.8	89.5	2313.4
Mariënborg	163.0	76.0	128.0	227.0	569.0	181.0	308.0	57.0	21.0	70.0	79.0	124.0	2003.0
Wederzorg	190.2	76.2	124.1	263.3	712.6	209.6	262.8	136.7	34.4	83.2	101.6	152.8	2347.5
Alliance	191.6	81.7	144.7	320.6	667.3	298.5	272.9	141.0	29.9	84.2	80.4	99.6	2412.4
Paradijs	190.6	71.7	156.8	358.6	719.0	235.7	306.6	182.0	22.5	35.5	64.0	151.0	2494.0
Slootwijk	195.1	72.0	148.8	259.5	643.9	208.5	286.1	156.0	82.0	34.6	130.5	97.1	2314.1
Moengo	267.5	70.9	148.9	367.5	453.7	327.4	232.4	115.1	105.3	29.4	105.2	108.6	2331.9
Gemiddeld	189.3	87.4	135.1	290.9	638.4	227.8	302.3	119.5	43.1	55.2	98.0	112.6	2299.6
<i>Stroomgebied Marowijne</i>													
Galibi	131.5	27.9	86.8	233.8	548.4	218.9	226.6	106.4	34.6	19.0	82.6	49.3	1765.8
Albina	272.7	57.2	158.9	402.6	475.5	398.0	256.5	211.5	61.0	5.3	72.2	144.2	2516.1
Placer Lawa	468.0	259.5	156.4	354.4	355.2	213.0	184.6	138.9	79.7	78.3	121.3	132.5	2541.8
Sajé	263.0	166.5	189.0	339.4	355.3	223.0	267.5	127.3	46.5	47.5	93.6	179.2	2297.8
Gemiddeld	283.8	127.8	147.8	332.6	433.6	263.2	233.8	146.0	55.4	37.5	92.6	126.3	2280.4

OVERZICHT VAN DE WAARNEMINGEN TE

	Temperatuur in graden Celsius									
	8	13 ¹⁾	18 ¹⁾	M	Maximum			Minimum		
					M	Abs.	Datum	M	Abs.	Datum
Januari	26.1	29.1	26.0	27.1	31.1	32.6	25	23.0	22.1	13
Februari	25.9	29.3	25.8	27.0	30.9	32.4	3	23.1	22.1	19, 20
Maart	26.2	29.8	26.4	27.5	31.7	33.8	11	23.4	21.3	3
April	27.0	30.3	26.7	28.0	32.0	34.5	22	23.9	22.9	16, 17
Mei	27.2	30.5	27.3	28.3	32.2	33.8	18	24.4	23.5	19
Juni	27.5	30.7	27.4	28.5	32.1	33.1	23	24.6	23.6	11, 12
Juli	27.0	30.7	27.5	28.4	32.0	33.5	7	24.3	23.1	11
Augustus	27.8	31.8	28.0	29.2	33.0	34.6	28	24.7	23.1	5
September	28.3	32.3	28.3	29.6	33.8	35.2	13	25.3	22.1	2
October	28.6	31.5	28.1	29.4	33.6	35.0	19	25.2	23.1	23, 24
November	27.5	29.4	27.1	28.0	32.0	35.1	9	23.9	21.5	22
December	26.3	28.7	26.3	27.1	30.3	31.2	18	23.4	21.3	21
Jaar	27.1	30.3	27.1	28.2	32.1	35.2	—	24.1	21.3	—

1) De waarnemingstijden waren in October 8, 14 en 19, in November en December 8, 14 en 18 uur

OVERZICHT VAN DE WAARNEMINGEN TE

	Temperatuur in graden Celsius									
	8	13 ¹⁾	18	M	Maximum			Minimum		
					M	Abs.	Datum	M	Abs.	Datum
Januari	25.8	29.2	26.0	27.0	30.7	32.4	11	22.8	21.1	24
Februari	26.1	29.6	26.2	27.3	31.0	31.7	21	23.8	23.0	28
Maart	26.5	30.0	26.4	27.6	32.2	33.6	1	23.4	22.0	15
April	26.3	29.5	26.3	27.4	31.6	32.8	29	23.5	20.6	14
Mei	28.1	31.2	27.8	29.0	32.5	34.8	5	24.9	23.1	12
Juni	27.9	31.2	27.8	29.0	32.5	33.9	4	24.8	23.4	26
Juli	27.3	30.9	27.6	28.6	31.9	32.6	25	24.4	23.0	27
Augustus	28.2	31.3	28.2	29.2	32.9	33.9	19	25.0	24.0	5
September	28.4	32.0	28.3	29.6	33.8	35.0	27	25.2	23.0	10
October	28.4	31.3	27.8	29.2	33.8	35.0	1	24.7	22.5	31
November	27.8	30.2	27.3	28.4	32.1	33.0	11	23.3	22.0	14
December	27.1	29.8	26.6	27.8	30.8	32.1	4	25.3	23.1	13
Jaar	27.3	30.5	27.2	28.3	32.2	35.0	—	24.3	20.6	—

1) De waarnemingstijden waren in Februari 8, 13 en 18 uur

WILLEMSTAD (FORT NASSAU) OP CURACAO IN 1940¹⁾

Dampdrukking in mm						Betrekkelijke vochtigheid in procenten					Bewolking (0—10)				Regenval in mm		
8	13 ¹⁾	18 ¹⁾	M	Max.	Min.	8	13 ¹⁾	18 ¹⁾	M	Min.	8	13 ¹⁾	18 ¹⁾	M	To-taal	Max.	Dat.
19.0	18.8	18.8	18.9	21.6	17.2	76	61	75	71	54	6.8	5.9	5.0	5.9	6.3	2.5	28
19.6	19.5	19.1	19.4	22.7	16.9	77	62	74	71	53	5.7	5.1	3.6	4.8	11.1	6.5	3
20.5	19.8	20.2	20.2	23.6	17.8	77	61	77	72	54	5.6	4.4	3.6	4.5	0.7	0.7	21
21.0	20.7	20.8	20.8	23.8	18.2	78	64	76	72	55	6.1	4.1	2.9	4.4	3.5	3.2	19
21.2	21.3	21.0	21.2	23.3	19.6	77	64	77	73	59	6.2	5.5	3.6	5.1	1.5	0.6	11
22.0	20.9	20.9	21.3	23.2	19.1	82	63	76	74	55	5.9	4.6	3.1	4.5	16.7	4.7	11
21.6	21.4	21.4	21.5	24.2	18.2	77	61	76	71	51	5.5	4.5	3.0	4.3	11.1	2.6	17
22.1	22.0	22.0	22.0	23.8	20.0	77	61	76	71	51	5.1	3.9	2.6	3.9	50.1	50.1	2
22.3	22.1	22.0	22.1	24.2	19.9	76	64	77	72	56	5.4	5.2	4.7	5.1	12.3	9.1	24
22.0	22.0	21.3	21.8	24.6	19.5	80	72	79	77	60	6.1	5.9	5.4	5.8	194.5	61.4	23
20.7	20.7	20.0	20.5	22.4	17.4	81	70	78	76	58	5.5	5.5	4.1	5.0	13.7	4.7	7
20.9	20.7	20.5	20.7	24.6	16.5	78	64	76	73	51	5.7	5.0	3.8	4.8	323.1	61.4	—

WILLEMSTAD (FORT NASSAU) OP CURACAO IN 1941¹⁾

Dampdrukking in mm						Betrekkelijke vochtigheid in procenten					Bewolking (0—10)				Regenval in mm		
8	13 ¹⁾	18	M	Max.	Min.	8	13 ¹⁾	18	M	Min.	8	13 ¹⁾	18	M	To-taal	Max.	Dat.
19.7	19.2	19.6	19.5	21.9	17.3	77	62	76	72	54	5.6	4.2	2.5	4.1	—	—	—
19.8	19.3	19.4	19.5	22.0	17.3	76	60	75	70	53	5.7	4.2	3.2	4.4	3.5	2.3	7
20.9	20.7	20.3	20.6	22.6	18.1	81	67	79	76	58	6.2	4.2	3.5	4.6	44.0	32.6	17
21.9	21.7	21.4	21.7	24.5	19.7	77	64	76	72	55	5.2	4.2	2.8	4.1	9.8	9.5	13
21.6	21.1	20.7	21.1	23.2	18.6	77	62	74	71	54	5.3	4.6	3.7	4.5	2.9	2.4	26
21.7	21.0	21.3	21.3	24.1	19.9	80	63	77	73	57	5.8	3.6	3.1	4.2	11.9	3.2	6
21.5	21.2	21.2	21.3	23.8	19.4	75	62	74	70	53	5.6	4.2	3.8	4.5	8.9	3.5	31
22.2	21.7	21.8	21.9	24.6	19.9	76	61	75	71	52	5.0	4.1	3.4	4.2	7.9	2.2	21
21.9	21.7	21.8	21.8	23.6	18.9	75	64	78	72	56	5.5	5.2	4.2	5.0	24.2	8.4	30
22.1	21.9	21.5	21.8	24.5	18.2	79	69	79	76	53	5.5	6.2	4.8	5.5	79.3	56.0	15
30.6	20.4	20.3	23.8	23.5	18.5	76	65	78	73	59	5.2	5.0	3.3	4.5	6.7	2.2	13
22.0	20.8	20.7	21.1	24.6	15.9	77	64	76	72	49	5.5	4.6	3.5	4.5	210.2	56.0	—

OVERZICHT VAN DE WAARNEMINGEN TE

	Temperatuur in graden Celsius									
	8	13	18	M	Maximum			Minimum		
					M	Abs.	Datum	M	Abs.	Datum
Januari	26.4	29.1	26.1	27.2	30.3	32.1	31	24.2	22.4	24
Februari	26.8	29.9	26.4	27.7	31.2	33.1	25	24.6	23.4	9
Maart	27.0	30.1	26.6	27.9	30.9	31.9	18	24.9	24.0	7
April	27.5	31.0	26.9	28.5	32.0	34.0	27	25.0	23.4	30
Mei	27.7	30.5	27.5	28.6	31.6	33.8	13	25.5	23.0	3
Juni	28.0	31.2	27.9	29.0	32.1	33.4	15	25.8	24.9	10
Juli	28.1	31.4	27.7	29.1	32.3	34.5	23	25.4	24.2	18
Augustus	28.7	31.6	28.2	29.5	32.6	34.0	15	25.9	23.6	1
September	28.7	31.2	28.1	29.3	32.7	33.9	13	25.6	24.5	16
October	28.7	30.6	28.1	29.1	32.5	33.9	3	25.6	24.0	23, 28
November	27.6	29.3	27.5	28.1	32.2	34.0	11	24.5	23.6	9
December	26.7	28.3	25.9	27.0	30.8	32.8	4	23.8	21.5	13
Jaar	27.7	30.4	27.2	28.4	31.9	34.5	—	25.1	21.5	—

WILLEMSTAD (FORT NASSAU) OP CURACAO IN 1942

Dampdrukking in mm						Betrekkelijke vochtigheid in procenten					Bewolking (0—10)				Regenval in mm		
8	13	18	M	Max.	Min.	8	13	18	M	Min.	8	13	18	M	To-taal	Max.	Dat.
20.3	19.9	19.9	20.0	23.4	17.2	77	63	77	72	51	5.3	4.6	4.1	4.7	1.0	0.8	5
20.0	19.4	19.4	19.6	21.7	15.4	75	60	75	70	49	5.2	3.5	2.4	3.7	0.6	0.6	7
21.4	20.9	20.7	21.0	24.8	17.4	78	62	78	73	51	4.9	3.8	3.4	4.0	44.2	28.5	28
22.1	22.1	22.0	22.1	25.5	19.1	80	68	80	76	59	7.0	5.7	4.0	5.6	2.1	0.8	19
21.9	22.1	21.7	21.9	24.3	18.4	77	65	77	73	53	5.2	4.3	2.9	4.1	3.2	1.4	25
21.2	20.9	21.5	21.2	24.1	17.3	75	61	77	71	47	4.4	3.3	2.4	3.4	6.6	4.0	2
21.7	21.1	21.5	21.4	23.6	18.2	74	60	75	70	50	4.9	3.5	2.6	3.7	17.3	15.5	19
22.2	22.0	22.0	22.1	24.5	19.5	75	65	76	72	57	5.3	4.8	3.9	4.7	40.3	32.5	17
22.9	22.6	22.4	22.6	25.2	19.5	78	69	79	75	56	5.9	5.8	4.1	5.3	121.1	20.3	27
23.1	23.1	22.6	22.9	25.6	20.3	83	76	82	80	61	6.7	6.7	5.0	6.1	202.9	73.5	4
21.8	21.5	21.1	21.5	24.5	19.0	83	75	84	81	62	5.8	6.1	4.8	5.6	181.9	65.7	13
21.6	21.3	21.2	21.4	25.6	15.4	78	66	78	74	47	5.6	4.8	3.6	4.7	628.5	73.5	—

OVERZICHT VAN DE WAARNEMINGEN TE

	Temperatuur in graden Celsius									
	8	13	18	M	Maximum			Minimum		
					M	Abs.	Datum	M	Abs.	Datum
Januari	26.0	28.3	25.5	26.6	30.6	32.0	11	23.2	22.3	19
Februari	26.2	28.8	26.0	27.0	30.7	31.6	28	23.7	22.2	6
Maart	26.2	28.6	25.4	26.7	31.0	32.0	7	23.9	23.0	9, 12
April	27.2	30.1	26.6	28.0	31.7	33.3	25	24.8	23.8	3
Mei	27.6	29.8	26.8	28.1	31.9	33.2	18	25.1	23.0	15
Juni	27.4	30.2	27.1	28.2	31.9	32.9	16, 17	25.2	24.0	6
Juli	27.9	30.6	27.5	28.7	32.5	34.0	29	25.4	24.5	3
Augustus	28.5	31.4	28.4	29.4	33.5	35.0	23	25.7	24.9	7
September	28.7	31.8	28.4	29.6	33.6	34.3	26	25.9	24.0	17
October	28.6	30.8	28.3	29.2	33.1	34.9	8	25.8	23.8	13
November	27.7	30.1	27.2	28.3	32.2	34.3	9	25.0	23.0	26
December	26.9	29.4	26.4	27.6	31.2	32.4	8	24.3	23.0	27, 28
Jaar	27.4	30.0	27.0	28.1	32.0	35.0	—	24.8	22.2	—

WILLEMSTAD (FORT NASSAU) OP CURACAO IN 1943

Dampdrukking in mm						Betrekkelijke vochtigheid in procenten					Bewolking (0—10)				Regenval in mm		
8	13	18	M	Max.	Min.	8	13	18	M	Min.	8	13	18	M	To-taal	Max.	Dat.
19.5	19.6	19.4	19.5	22.4	17.2	77	66	77	73	55	4.2	5.1	3.8	4.4	2.9	1.2	6
19.1	19.2	19.3	19.2	21.5	17.0	75	66	79	73	56	4.9	5.9	4.5	5.1	25.5	9.5	12
20.3	20.4	20.3	20.3	23.1	17.4	75	64	78	72	54	5.3	4.9	3.5	4.6	2.2	1.1	30
20.9	20.8	21.3	21.0	24.2	19.0	75	66	81	74	50	5.4	5.3	3.5	4.7	8.5	8.2	15
21.0	20.9	20.9	20.9	22.6	19.1	77	65	78	73	60	6.1	5.5	4.2	5.3	12.2	4.5	19
21.2	20.5	21.0	20.9	22.8	17.9	75	62	76	71	53	5.8	4.9	3.1	4.6	4.3	1.4	3
21.9	21.6	21.8	21.8	24.8	18.2	75	63	75	71	50	6.0	4.4	3.0	4.5	12.5	8.5	31
22.5	22.0	22.0	22.2	24.6	18.7	75	62	76	71	50	5.4	4.6	2.8	4.3	51.9	28.0	16
22.6	23.0	22.1	22.6	25.3	19.8	77	70	77	75	57	6.4	5.7	3.6	5.2	64.2	36.1	28
21.5	21.5	20.9	21.3	24.7	18.8	77	67	77	74	58	6.3	6.4	5.2	6.0	88.5	33.2	14
20.9	20.3	20.5	20.6	23.5	17.1	78	66	79	74	55	5.5	5.6	5.6	5.6	22.6	8.9	25
21.0	20.8	20.8	20.8	25.3	16.8	76	66	78	73	50	5.5	5.3	4.0	4.9	328.3	36.1	—

OVERZICHT VAN DE WAARNEMINGEN TE

	Temperatuur in graden Celsius									
	8 ¹⁾	13 ¹⁾	18 ¹⁾	M	Maximum			Minimum		
					M	Abs.	Datum	M	Abs.	Datum
Januari	26.3	28.9	26.0	27.1	30.5	32.0	6	23.7	21.7	12
Februari	26.0	29.2	26.2	27.1	30.6	32.1	5	23.7	22.1	6
Maart	26.4	29.4	25.9	27.2	30.8	31.9	13	23.9	22.2	12
April	26.8	29.4	26.4	27.5	31.5	32.1	21	24.5	23.5	30
Mei	26.9	29.1	26.5	27.5	30.5	33.9	30	24.7	22.0	8
Juni	27.6	30.0	27.4	28.3	31.4	33.6	2	25.5	22.7	12
Juli	28.0	30.7	28.0	28.9	32.5	33.5	30	25.6	24.5	20, 21
Augustus	27.6	31.2	27.5	28.8	32.9	34.1	20	25.7	24.0	12
September	27.8	31.8	27.9	29.2	33.5	35.5	12	26.3	24.1	15
October	27.4	30.6	27.7	28.6	32.9	34.8	2	25.8	22.9	30
November	25.9	28.0	26.4	26.8	30.6	32.8	9	24.0	22.1	13
December	25.3	26.8	24.9	25.7	28.7	31.1	3	22.9	19.5	27
Jaar	26.8	29.6	26.7	27.7	31.4	35.5	—	24.7	19.5	—

1) De waarnemingstijden waren van Augustus af 6.54, 12.54 en 18.54.

WILLEMSTAD (FORT NASSAU) OP CURACAO IN 1944

8 ¹⁾	13 ¹⁾	18 ¹⁾	M	Max.	Min.	Betrekkelijke vochtigheid in procenten					Bewolking (0—10)				Regenval in mm		
						8 ¹⁾	13 ¹⁾	18 ¹⁾	M	Min.	8 ¹⁾	13 ¹⁾	18 ¹⁾	M	To-taal	Max.	Dat.
20.0	19.4	19.3	19.6	22.0	17.1	78	65	77	73	53					21.8	12.0	29
18.5	18.3	18.6	18.5	21.2	16.0	73	60	73	69	50					6.1	3.0	6
19.4	18.7	19.3	19.1	22.6	16.2	75	61	77	71	49				9.0	3.8	14	
19.9	19.1	20.1	19.7	21.6	16.6	75	62	77	71	52				9.5	8.5	30	
21.9	21.8	21.7	21.8	24.8	18.2	83	73	83	80	60				162.7	40.5	5	
22.2	22.6	21.9	22.2	24.1	19.9	80	72	80	77	62				95.7	72.3	12	
21.9	21.7	21.5	21.7	24.8	18.5	78	65	76	73	52				8.5	3.2	10	
22.6	21.9	22.5	22.3	24.6	18.9	82	64	82	76	57				18.1	14.7	12	
22.5	21.6	22.4	22.2	24.2	19.4	80	61	79	73	53				1.6	1.6	16	
22.0	21.7	21.6	21.8	24.8	19.0	81	67	78	75	52				61.6	23.8	18	
21.3	21.6	21.2	21.4	23.6	17.9	86	78	83	82	63				242.6	48.4	14	
20.4	20.2	20.1	20.2	24.5	16.5	85	78	86	83	61				256.4	100.0	21	
21.0	20.7	20.8	20.8	24.8	16.0	80	67	79	75	49				893.6	100.0	—	

OVERZICHT VAN DE WAARNEMINGEN TE

	Temperatuur in graden Celsius									
	6.54	12.54	18.54	M	Maximum			Minimum		
					M	Abs.	Datum	M	Abs.	Datum
Januari	24.4	26.6	24.7	25.2	27.3	28.6	11	23.1	21.2	4
Februari	24.0	26.5	24.4	25.0	27.3	28.2	20	22.8	20.8	17
Maart	24.4	26.9	24.7	25.3	27.5	29.7	26	23.2	22.0	19
April	25.3	27.6	25.5	26.1	28.1	29.6	17	24.2	22.9	5
Mei	26.3	28.2	26.4	27.0	29.4	31.5	30	25.0	24.2	4
Juni	26.5	28.4	26.6	27.2	29.0	30.7	2	25.0	23.8	22
Juli	26.6	28.7	26.6	27.3	29.5	30.5	30	24.8	21.6	11
Augustus	26.9	29.5	27.4	27.9	30.2	31.7	7	25.4	22.4	30
September	27.6	29.3	27.6	28.2	30.3	31.1	11, 13	26.1	25.0	5, 6
October	27.1	28.9	27.1	27.7	30.3	31.5	16	25.7	23.9	25
November	26.2	28.4	26.4	27.0	29.6	31.2	27	25.0	23.2	24
December	25.5	27.6	25.9	26.3	29.3	30.9	1, 4	24.4	23.0	21
Jaar	25.9	28.0	26.1	26.7	29.0	31.7	—	24.6	20.8	—

WILLEMSTAD (FORT NASSAU) OP CURACAO IN 1945

6.54	12.54	18.54	M	Max.	Min.	Betrekkelijke vochtigheid in procenten					Bewolking (0—10)				Regenval in mm		
						6.54	12.54	18.54	M	Min.	6.54	12.54	18.54	M	To-taal	Max.	Dat.
18.2	18.2	18.5	18.3	21.4	15.3	80	71	81	77	60				14.7	5.5	3	
18.2	17.5	17.8	17.8	21.7	15.1	82	68	79	76	56				40.2	13.1	6	
18.2	17.3	18.1	17.9	19.7	15.6	80	66	79	75	58				20.1	5.1	19	
19.6	18.7	19.3	19.2	20.4	16.5	82	68	80	77	58				1.0	0.5	6	
20.8	19.9	20.7	20.5	25.1	15.7	82	70	81	78	53				5.8	3.1	26	
21.4	21.1	21.4	21.3	23.4	19.4	82	72	82	79	54				15.3	3.1	22	
21.6	20.7	21.8	21.4	23.2	18.6	87	70	81	79	61				21.0	4.3	10	
22.0	21.1	21.8	21.6	23.9	18.7	83	68	80	77	58				93.4	26.4	25	
22.1	21.3	21.5	21.6	23.9	17.1	80	70	78	76	52				13.9	4.1	17	
22.0	21.3	21.7	21.7	25.1	18.3	82	71	81	78	61				34.1	8.9	25	
21.0	20.7	20.8	20.8	22.8	17.9	82	71	80	78	62				40.9	7.9	6	
20.2	19.3	19.8	19.8	22.5	17.0	83	70	79	77	58				17.3	7.5	5	
20.4	19.8	20.3	20.2	25.1	15.1	82	70	80	77	52				317.7	26.4	—	

OVERZICHT VAN DE WAARNEMINGEN TE

	Temperatuur in graden Celsius									
	6.54	12.54	18.54	M	Maximum			Minimum		
					M	Abs.	Datum	M	Abs.	Datum
Januari	24.2	26.7	24.8	25.2	27.7	28.9	1	22.9	21.1	6
Februari	23.8	26.0	24.4	24.7	27.1	28.1	25	22.6	20.1	7
Maart	24.5	26.8	24.7	25.3	27.9	31.0	21	23.7	22.2	7
April	25.2	27.4	25.5	26.0	28.2	29.0	25	24.5	22.8	9
Mei	26.2	27.4	26.2	26.6	29.0	30.5	26	25.1	24.3	23
Juni	26.2	28.1	26.4	26.9	28.9	29.7	20	25.0	23.1	25
Juli	26.3	28.3	26.5	27.0	29.1	30.5	29	25.2	23.4	2
Augustus	26.9	29.4	27.0	27.8	30.0	31.5	31	25.7	24.1	2
September	27.1	29.4	26.9	27.8	30.2	32.2	5	26.1	25.8	13, 16, 19
October	27.3	29.7	27.3	28.1	30.6	31.8	31	25.5	23.6	20
November	26.4	28.1	26.5	27.0	29.5	31.0	1	24.8	22.5	20
December	25.8	27.5	25.9	26.4	28.7	30.9	4	24.7	23.0	27
Jaar	25.8	27.9	26.0	26.6	28.9	32.2	—	24.6	20.1	—

WILLEMSTAD (FORT NASSAU) OP CURACAO IN 1946

Dampdrukking in mm						Betrekkelijke vochtigheid in procenten					Bewolking (0—10)				Regenval in mm		
6.54	12.54	18.54	M	Max.	Min.	6.54	12.54	18.54	M	Min.	6.54	12.54	18.54	M	To-taal	Max.	Dat.
18.8	18.3	18.6	18.6	20.4	17.1	85	72	81	79	62					36.0	5.9	13
19.0	18.0	18.9	18.6	21.7	14.4	82	68	81	77	58					2.9	2.2	9
20.3	19.3	20.0	19.9	23.0	16.3	84	70	82	79	55					3.7	1.0	22
21.6	20.3	21.3	21.1	23.0	18.3	84	70	83	79	62					7.7	1.8	19
21.4	20.4	20.8	20.9	22.8	18.4	85	71	81	79	63					32.2	2.0	24
21.3	20.5	21.1	21.0	22.6	18.8	83	71	81	78	60					2.8	0.8	22, 24
21.5	20.4	21.1	21.0	23.4	18.6	81	66	79	75	60					6.8	3.7	2
21.6	21.0	21.3	21.3	23.0	18.0	80	68	79	76	58							
22.2	21.0	21.9	21.7	23.9	17.3	82	68	80	77	55					35.7	24.5	4
21.6	21.2	21.6	21.5	23.5	18.9	84	75	83	81	60					75.5	15.9	20
20.9	20.9	20.8	20.9	23.8	17.1	84	76	83	81	67					101.9	22.1	9
20.8	20.0	20.5	20.4	23.9	14.4	83	70	81	78	55					336.5	24.5	—

REGENVAL OP DE NEDERLANDSE ANTILLEN, UITGEDRUKT IN MM¹⁾

1940	Jan.	Febr.	Mrt.	April	Mei	Juni	Juli	Aug.	Sept.	Oct.	Nov.	Dec.	Jaar
BENEDENWINDSE EILANDEN													
<i>Curaçao</i>													
Westpunt			2.5	1.6	5.0	0.8		37.0		10.1	213.4	40.8	311.2
Barber	11.5		0.0	4.2	8.0		18.5	46.5			289.5	39.0	417.2
West-Sotto	11.0			5.5	7.0		12.0	50.0		50.0	296.0	25.0	456.5
Dokterstuin	10.0				7.0		4.0	59.5		22.6	237.4	29.8	370.3
St. Willebrordus		2.0			4.0			5.0	11.0	95.8	102.5	—	—
Kleine Berg	6.0	2.9	6.1	1.2	10.4	2.7	22.6	29.6	18.4	70.7	128.2	21.7	320.5
Blauw	0.0	2.5	6.0				30.4	12.0	11.0	26.0	322.0	19.0	428.9
Hato	6.0	6.0	5.5	4.5	3.5		18.0	37.0	2.5	38.5	251.0	23.0	395.5
Santa Maria			1.0					10.0		22.0	—	23.0	—
St. Thomas College	0.7	3.6	12.2	0.4	4.5	4.0	31.9	16.3	60.9	27.2	237.6	31.8	431.1
Fort Nassau	1.6	6.3	11.1	0.7	3.5	1.5	16.7	11.1	50.1	12.3	194.5	13.7	323.1
Rust		4.5	9.0		2.5		32.0	11.0	42.0	34.5	213.0	20.5	369.0
Klein Kwartier		7.5	10.0		2.0		18.0		31.5	29.0	166.1	26.0	290.1
Zuurzak		10.0	10.0				29.5	17.5	13.5	25.0	126.0	22.5	254.0
Scherpenheuvel	6.3	8.2	15.9		4.4	2.4	32.5	27.0	28.0	26.8	193.3	26.0	370.8
Santa Rosa		4.5	18.0		4.5		45.0	21.0	27.5	47.5	257.0	21.0	446.0
Montagne	2.8	11.0	15.8		2.5		19.3	28.5	10.9	10.5	198.0	22.7	322.0
Groot St. Joris	10.0		12.0		3.8		53.0	35.0	14.0	12.0	218.0	33.0	390.8
Newport	8.4	7.1	25.7		3.7		32.5	28.4	43.8	8.6	149.3	34.7	342.2
Gemiddeld	3.9	4.0	8.5	1.0	4.0	6.0	21.9	25.4	19.2	30.0	210.7	26.3	360.9
<i>Aruba</i>													
Noord							30.0	11.0		120.0	159.0	40.0	360.0
Arendterrein	7.7	2.3	2.0		5.6	4.8	10.3	20.0	0.5	60.7	110.5		224.4
Oranjestad	1.9		3.4		3.8	2.2	10.9	15.0		70.0	122.2	6.9	236.3
Santa Cruz		3.5			11.0	4.5	10.5	10.5	9.5	23.0	98.5	11.5	182.5
Savaneta											118.5		118.5
Lago	3.8	2.4	0.9	1.4	11.1	1.9	9.3	5.7	19.8	5.4	134.9	28.5	225.1
Gemiddeld	2.2	1.4	1.0	0.2	5.2	2.2	11.8	10.4	5.0	46.5	123.9	14.5	224.3
<i>Bonaire</i>													
Kralendijk	13.1	1.5	19.1		2.5	2.1	6.0	30.6	0.9	1.1	149.3	34.0	260.2
Bolivia			21.0					25.5	4.1		118.5		169.1
Rinçon	9.5	7.5	11.8	2.5	4.7	2.9	3.7	49.4	7.8	8.0	186.4	42.1	336.3
Gemiddeld	7.5	3.0	17.3	0.8	2.4	1.7	3.2	35.2	4.3	3.0	151.4	25.4	255.2
BOVENWINDSE EILANDEN													
<i>St. Eustatius</i>													
Oranjestad	30.0	31.5	83.0	49.0	62.0	82.5	92.0	84.0	136.5	65.0	84.0	55.0	854.5
<i>Saba</i>													
Bottom	44.8	69.5	55.6	27.4	98.3	82.8	98.9	91.1	122.0	141.2	136.0	79.2	1048.6
St. Johns	37.5	68.0	33.0	19.0	91.5	121.0	59.0	73.5	129.5	141.0	150.0	55.0	978.0
Windwardside	43.2	80.0	39.5	43.0	111.5	121.0	76.4	75.5	154.0	144.0	137.0	63.5	1088.6
Gemiddeld	41.8	72.5	42.7	29.8	100.4	108.3	78.1	80.3	135.2	142.1	141.0	65.9	1038.1
<i>St. Martin</i>													
Phillipsburg	96.2	71.3	55.4	193.6	270.3	80.5	43.9	166.7	119.6	114.7	116.3	72.8	1401.3

1) — betekent geen waarnemingen . geen regen

REGENVAL OP DE NEDERLANDSE ANTILLEN, UITGEDRUKT IN MM

1941	Jan.	Febr.	Mrt.	April	Mei	Juni	Juli	Aug.	Sept.	Oct.	Nov.	Dec.	Jaar
BENEDENWINDSE EILANDEN													
<i>Curaçao</i>													
Westpunt	22.2	.	.	44.9	45.0	84.3	.	196.4
Barber	14.8	.	.	38.8	7.7	.	.	.	5.6	51.2	84.7	14.2	217.0
West-Sotto	8.0	.	.	24.0	.	.	7.0	9.0	22.0	27.0	60.0	.	157.0
Dokterstuin	17.9	.	.	23.2	6.0	.	11.3	.	2.5	43.3	83.7	17.3	205.2
St. Willebrordus	—	.	.	29.8	8.3	1.8	.	9.8	.	41.8	31.8	.	—
Kleine Berg	15.3	.	.	46.7	16.1	.	10.2	22.2	4.9	49.2	87.3	8.2	260.1
Blauw	10.0	.	.	33.0	7.0	.	.	22.0	11.2	46.0	160.4	.	289.6
Hato	6.0	.	3.0	57.4	11.2	2.9	13.8	12.4	11.6	38.0	138.4	8.0	302.7
Santa Maria	23.0	8.0	.	16.5	5.5	11.0	35.0	102.0	12.0	213.0
St. Thomas College	22.6	0.9	4.1	70.4	13.4	4.9	12.9	5.8	16.2	35.4	95.3	5.9	287.8
Fort Nassau	11.1	.	3.5	44.0	9.8	2.9	11.9	8.9	7.9	24.2	79.3	6.7	210.2
Rust	4.0	47.8	.	4.0	8.5	9.5	—	—	99.2	9.8	—
Klein Kwartier	8.0	.	5.0	51.0	8.0	3.5	1.5	13.0	36.5	26.0	106.0	11.0	269.5
Zuurzak	16.0	.	.	68.1	.	1.5	6.3	9.8	35.0	20.0	105.5	.	262.2
Scherpenheuvel	17.1	.	3.9	56.9	.	2.8	12.1	19.1	48.6	34.6	151.3	11.8	358.2
Santa Rosa	19.0	.	10.0	57.0	11.5	3.5	20.0	18.4	25.3	33.7	137.6	11.4	347.4
Montagne	16.6	.	.	52.7	5.8	1.5	8.4	17.1	45.4	32.7	137.4	6.9	324.5
Groot St. Joris	18.0	.	7.0	49.0	8.0	4.0	8.0	12.0	20.0	27.1	83.0	7.0	243.1
Newport	24.9	.	5.5	47.0	2.2	8.3	8.3	13.7	19.1	28.9	126.2	16.0	300.1
Gemiddeld	13.8	0.0	2.4	45.5	6.5	2.2	8.2	11.0	17.9	35.5	102.8	7.7	253.5
<i>Aruba</i>													
Noord	20.0	20.0
Arendsterrein	1.8	0.4	32.6	40.8	75.6
Oranjestad	4.9	.	5.8	52.0	7.5	2.9	2.6	2.2	8.3	11.9	22.5	11.7	132.3
Santa Cruz	3.5	.	.	51.0	11.5	44.0	12.5	122.5
Saveneta	48.0	31.0	28.5	19.5	.	127.0
Lago	6.8	.	3.0	104.7	11.3	6.1	18.9	0.8	5.6	46.4	13.2	11.8	228.6
Gemiddeld	2.8	0.1	6.9	52.8	3.1	1.5	3.6	0.5	7.5	16.4	16.5	6.0	117.7
<i>Bonaire</i>													
Kralendijk	10.5	.	.	42.8	.	.	1.8	15.7	13.9	34.1	96.7	7.8	223.3
Bolivia	11.0	.	.	52.0	.	.	.	6.5	20.0	31.5	101.5	10.0	232.5
Rinçon	31.9	.	1.4	44.4	1.5	2.8	.	16.9	16.9	33.5	153.6	15.8	318.7
Gemiddeld	17.8	.	0.5	46.4	0.5	0.9	0.6	13.0	16.9	33.0	117.3	11.2	258.1
BOVENWINDSE EILANDEN													
<i>St. Eustatius</i>													
Oranjestad	59.1	25.1	14.4	37.8	270.5	108.4	104.8	101.7	101.6	87.1	83.2	71.1	1064.8
<i>Saba</i>													
Bottom	64.0	7.5	64.7	29.5	263.5	62.0	151.5	74.0	75.0	110.5	92.5	97.0	1091.7
St. Johns	96.5	11.0	43.5	—	263.5	63.0	148.5	73.5	72.5	113.5	93.0	96.5	—
Windwardside	139.0	29.0	16.0	30.0	261.5	61.0	150.5	77.0	75.5	191.0	97.0	110.0	1237.5
Gemiddeld	99.8	15.8	41.4	29.8	262.8	62.0	150.2	74.8	74.3	138.3	94.2	101.2	1144.6
<i>St. Martin</i>													
Phillipsburg	73.3	55.8	60.8	21.4	223.6	115.2	79.6	127.2	178.8	179.5	154.9	186.0	1456.1

REGENVAL OP DE NEDERLANDSE ANTILLEN, UITGEDRUKT IN MM

1942	Jan.	Febr.	Mrt.	April	Mei	Juni	Juli	Aug.	Sept.	Oct.	Nov.	Dec.	Jaar
BENEDENWINDSE EILANDEN													
<i>Curaçao</i>													
Westpunt	29.7	.	.	26.3	.	2.8	58.3	174.5	253.7	545.3
Barber	95.5	.	5.3	9.9	11.9	6.0	22.5	187.6	256.4	595.1
West-Sotto	75.8	.	3.0	30.0	.	34.0	45.5	191.3	205.3	584.9
Dokterstuin	44.8	.	.	18.3	13.8	8.5	9.5	190.5	234.9	520.3
St. Willebrordus	22.7	.	.	14.5	.	23.0	26.8	—	—	—
Kleine Berg	42.1	.	2.5	14.4	.	94.2	128.4	253.2	211.1	745.9
Blauw	33.0	12.0	.	17.0	.	.	24.0	11.0	7.0	91.8	246.6	292.0	734.4
Hato	14.8	12.2	.	38.1	11.9	3.0	16.7	8.5	93.9	242.7	229.1	229.9	900.8
Santa Maria	12.0	14.0	.	29.0	.	.	2.0	.	32.0	189.0	—	—	—
St. Thomas College	21.6	4.1	0.4	48.8	4.5	7.3	16.9	25.7	33.5	206.5	259.1	286.7	915.1
Fort Nassau	7.3	1.0	0.6	44.2	2.1	3.2	6.6	17.3	40.3	121.1	202.9	181.9	628.5
Rust	27.7	6.0	.	92.4	5.8	3.2	6.7	24.4	6.5	86.0	104.1	226.9	589.7
Klein Kwartier	12.0	10.0	.	83.0	10.0	3.1	13.0	20.5	15.5	93.0	129.0	240.0	629.1
Zuurzak	8.5	.	.	99.8	4.5	.	19.5	18.0	19.5	69.9	112.0	276.5	628.2
Scherpenheuvel	23.8	5.9	3.0	101.8	9.3	10.2	7.8	31.1	21.8	101.0	113.5	260.8	690.0
Santa Rosa	36.2	16.3	1.0	65.0	6.2	4.8	13.5	15.0	21.5	99.5	208.8	309.0	796.8
Montagne	19.1	9.4	2.5	115.0	11.1	1.9	9.3	26.4	25.3	60.4	159.3	335.8	775.5
Groot St. Joris	25.0	9.5	.	79.5	9.3	3.5	10.0	7.0	28.3	80.5	204.5	334.5	791.6
Newport	23.0	5.8	.	67.4	7.7	2.1	11.2	13.6	38.6	86.6	276.0	346.0	878.0
Gemiddeld	13.9	5.6	0.4	62.7	4.3	2.8	14.2	12.9	29.1	95.7	190.7	263.6	695.9
<i>Aruba</i>													
Noord	16.0	.	3.0	.	130.0	70.0	61.7	93.0	45.0	418.7
Arendterrein	12.9	2.8	.	20.3	1.6	3.8	9.2	20.2	96.1	61.7	74.3	120.4	423.3
Oranjestad	18.2	1.2	.	14.5	.	7.8	6.9	29.5	32.8	39.4	98.7	138.4	387.4
Santa Cruz	63.0	.	—	.	36.5	46.0	25.0	150.8	163.0	—
Saveneta	—	.	.	—	—	—	—	—
Lago	27.2	4.1	0.5	2.4	28.9	29.2	13.2	34.9	29.5	83.9	98.2	145.4	497.4
Gemiddeld	9.7	1.4	0.1	19.4	5.1	11.0	4.9	41.8	54.9	54.3	103.0	122.4	428.0
<i>Bonaire</i>													
Kralendijk	9.8	.	.	131.9	.	.	26.0	38.4	—	69.1	111.7	155.7	—
Bolivia	0.0	.	.	89.5	.	.	.	31.0	—	59.0	137.0	184.0	—
Rinçon	22.7	.	.	51.3	.	9.5	24.2	28.0	—	156.1	149.1	188.2	—
Gemiddeld	10.8	.	.	90.9	.	3.2	16.7	32.5	—	94.7	132.6	176.0	—
BOVENWINDSE EILANDEN													
<i>St. Eustatius</i>													
Oranjestad	135.0	56.9	27.8	61.4	312.5	191.4	65.6	221.8	69.3	186.9	263.5	78.8	1670.9
<i>Saba</i>													
Bottom	212.0	43.0	49.0	346.5	216.5	190.0	85.0	225.0	58.5	91.5	353.0	84.5	1954.5
St. Johns	211.0	43.0	48.5	347.5	222.0	191.0	85.0	226.5	58.5	91.0	352.0	84.5	1960.5
Windwardside	218.0	43.0	51.0	394.5	298.0	204.0	88.5	245.0	61.5	92.0	364.0	85.0	2144.5
Gemiddeld	213.7	43.0	49.5	362.8	245.5	195.0	86.2	232.2	59.5	91.5	356.3	84.7	2019.9
<i>St. Martin</i>													
Phillipsburg	41.0	31.2	47.7	153.0	89.5	129.7	110.0	115.2	224.0	75.3	447.3	104.5	1568.4

REGENVAL OP DE NEDERLANDSE ANTILLEN, UITGEDRUKT IN MM

1943	Jan.	Febr.	Mrt.	April	Mei	Juni	Juli	Aug.	Sept.	Oct.	Nov.	Dec.	Jaar
BENEDENWINDSE EILANDEN													
<i>Curaçao</i>													
Westpunt	63.4	.	15.8	34.4	5.8	.	.	.	78.5	151.7	113.6	62.2	525.4
Barber	59.0	54.3	28.3	46.7	10.5	.	34.3	86.0	56.8	58.9	124.6	26.5	585.9
West-Sotto	52.8	46.1	17.1	42.4	.	4.5	24.0	32.5	18.0	21.0	43.6	16.4	318.4
Dokterstuin	51.8	54.3	20.9	55.1	3.2	6.0	28.5	35.3	43.0	54.9	119.8	24.1	496.9
St. Willebrordus	47.2	—	—	—	—	—	—	—	—	—	—	—	—
Kleine Berg	46.0	11.5	25.6	63.8	18.8	12.7	8.5	46.1	6.6	42.0	100.3	29.3	411.2
Blauw	50.0	3.2	22.0	—	31.0	13.0	5.0	7.0	38.0	96.0	90.0	45.0	—
Hato	58.4	29.8	35.0	—	34.2	3.4	29.1	33.5	53.7	159.2	139.8	39.1	—
Santa Maria	—	—	—	—	—	—	—	—	—	—	—	—	—
St. Thomas College	45.6	5.3	35.3	7.0	19.4	18.4	4.7	14.3	72.7	114.3	85.5	30.2	452.7
Fort Nassau	33.0	2.9	25.5	2.2	8.5	12.2	4.3	12.5	51.9	64.2	88.5	22.6	328.3
Rust	50.7	3.5	38.5	.	5.5	4.0	4.5	18.6	42.5	34.9	135.1	20.5	—
Klein Kwartier	54.0	4.0	37.0	—	—	—	—	—	—	—	—	—	—
Zuurzak	41.0	—	—	—	—	—	—	—	—	—	—	—	—
Scherpenheuvel	59.2	6.3	12.9	10.0	21.3	8.2	8.2	48.6	31.5	54.3	111.6	24.4	396.5
Santa Rosa	53.1	4.5	—	—	—	—	—	—	—	—	—	—	—
Montagne	73.1	4.2	16.2	—	—	—	—	—	—	—	—	—	—
Groot St. Joris	54.0	1.3	6.0	—	17.0	8.5	2.8	36.0	54.5	46.2	126.5	26.3	—
Newport	43.0	13.2	14.7	—	7.9	27.2	14.0	45.5	51.6	65.3	87.1	34.3	—
Gemiddeld	52.0	14.5	23.4	32.7	14.1	9.1	12.9	32.0	46.1	74.1	105.1	30.8	446.8
<i>Aruba</i>													
Noord	—	—	—	—	—	—	—	—	—	65.0	—	—	—
Arendsterrein	48.6	10.2	14.2	5.4	8.8	11.8	12.7	—	37.6	—	—	—	—
Oranjestad	35.2	9.2	14.2	14.2	2.2	14.5	22.4	11.2	22.4	109.6	20.3	29.9	305.3
Santa Cruz	47.0	27.0	—	—	—	—	15.5	—	—	79.5	—	68.0	—
Saveneta	—	—	—	—	—	—	—	—	—	—	—	—	—
Lago	73.0	2.8	10.9	9.4	3.2	17.1	34.4	14.1	4.0	31.8	44.0	48.3	293.0
Gemiddeld	51.0	12.3	13.1	9.7	4.7	14.5	14.2	12.6	21.3	71.5	32.2	48.7	305.8
<i>Bonaire</i>													
Kralendijk	40.0	6.8	18.7	0.3	61.5	6.7	12.0	42.5	92.2	68.7	54.7	40.1	444.2
Bolivia	30.5	.	.	.	65.0	18.5	8.0	11.0	103.0	73.0	26.0	40.0	375.0
Rinçon	45.6	10.0	20.3	25.0	113.5	23.5	18.3	54.0	103.2	73.5	68.1	73.2	628.2
Gemiddeld	38.7	5.6	13.0	8.4	80.0	16.2	12.8	35.8	99.5	71.7	49.6	51.1	482.4
BOVENWINDSE EILANDEN													
<i>St. Eustatius</i>													
Oranjestad	51.0	36.3	42.8	26.1	236.2	75.8	106.3	129.0	160.0	60.6	160.0	98.8	1182.9
<i>Saba</i>													
Bottom	83.0	52.0	70.0	38.5	246.0	64.5	56.0	94.0	115.0	138.0	136.0	110.0	1203.0
St. Johns	83.0	52.0	70.0	38.5	246.5	65.0	56.5	94.0	115.0	138.0	137.0	110.0	1205.5
Windwardside	83.5	52.0	70.5	38.5	247.5	74.0	61.5	94.0	115.0	138.0	138.0	110.0	1222.5
Gemiddeld	83.2	52.0	70.2	38.5	246.7	67.8	58.0	94.0	115.0	138.0	137.0	110.0	1210.4
<i>St. Martin</i>													
Phillipsburg	133.0	24.7	123.0	117.9	206.5	103.1	149.9	63.7	69.3	86.5	431.3	176.3	1685.2

REGENVAL OP DE NEDERLANDSE ANTILLEN, UITGEDRUKT IN MM

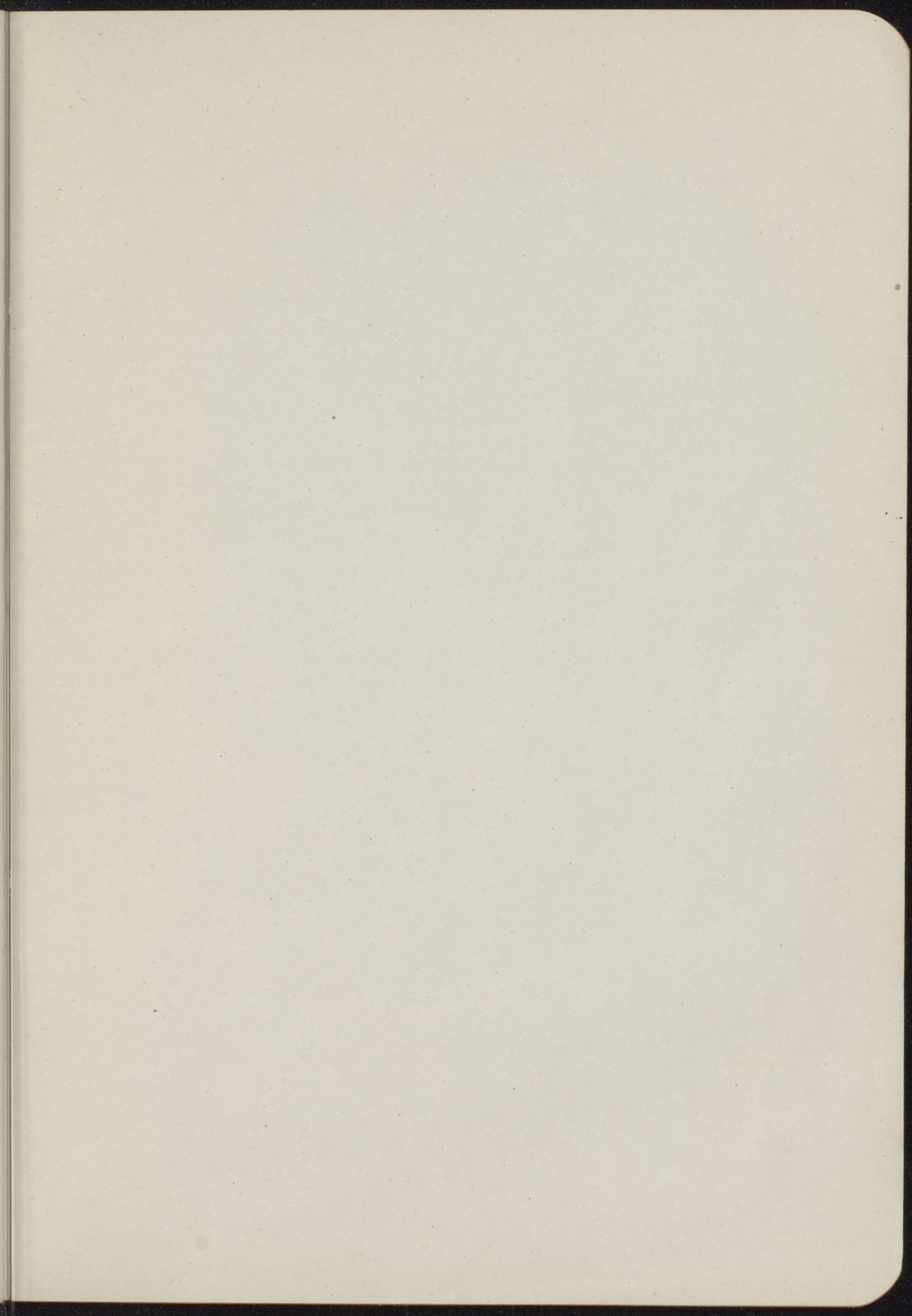
1944	Jan.	Febr.	Mrt.	April	Mei	Juni	Juli	Aug.	Sept.	Oct.	Nov.	Dec.	Jaar
BENEDENWINDSE EILANDEN													
<i>Curaçao</i>													
Westpunt				47.7	76.0	45.7			25.0	142.4	206.6	185.0	728.4
Barber	44.8	9.5		27.0	180.9	59.5	24.0	26.0		105.5	325.8	266.4	1069.4
West Sotro	28.4	11.5		16.6	156.0	68.4	48.5	18.2		167.9	324.2	303.0	1142.7
Dokterstuin	43.5	7.2		14.4	203.6	58.3	30.5	21.1		94.5	349.9	224.5	1047.5
St. Willebrordus	—	—	—	—	—	—	—	—	—	—	—	—	—
Kleine Berg	26.0	18.2	10.4	14.5	196.1	79.6	13.2	33.3	9.0	25.3	236.7	228.7	891.0
Blauw	9.8	21.7	7.0	17.0	248.4	184.0	15.0	10.0		91.8	336.6	349.3	1290.6
Hato	—	15.9	22.0	19.3	159.2	182.9	14.7	35.8	3.3	69.7	260.0	245.5	—
Santa Maria	—	—	—	—	—	—	—	—	—	—	—	—	—
St. Thomas College	40.7	10.5	16.1	12.7	231.2	111.8	25.1	27.5	4.6	75.7	276.2	288.4	1120.5
Fort Nassau	21.8	6.1	9.0	9.5	162.7	95.7	8.5	18.1	1.6	61.6	242.6	256.4	893.6
Rust	25.4	6.3	3.9	12.3	204.7	110.0	4.0	21.0		59.0	332.6	209.0	988.2
Klein Kwartier	29.6	8.4	13.1	11.5	193.5	117.5	13.0	17.6	7.5	75.5	334.0	202.0	1023.2
Zuurzak	—	—	—	—	—	—	—	—	—	—	—	—	—
Scherpenheuvel	31.4	9.7	13.8	26.0	169.3	131.2	12.4	27.6	11.5	91.2	299.4	208.9	1032.4
Santa Rosa	24.6	11.0	8.8	14.7	216.1	119.0	9.7	27.2	4.6	73.0	307.7	213.0	1029.4
Montagne	23.7	5.7	5.0	8.1	170.4	124.1	9.0	24.4	5.2	67.9	282.1	283.6	1009.2
Groot St. Joris	24.3	12.5	11.3	17.5	142.3	91.8	2.0	20.7		37.0	252.5	158.0	769.9
Newport	46.0	14.7	29.7	3.0	162.8	85.9	23.1	19.3	13.0	55.9	230.9	221.2	905.5
Gemiddeld	28.0	10.6	9.4	17.0	179.6	104.1	15.8	21.7	5.3	80.9	287.4	240.2	1000.0
<i>Aruba</i>													
Noord	—	—	—	78.0	121.0	56.0	—	—	—	67.0	134.0	—	—
Arendterrein	32.7	13.6	5.6	30.4	73.3	10.4	17.7	15.8	11.6	89.7	221.3	237.6	759.7
Oranjestad	46.3	11.6	10.1	36.5	69.5	46.9		20.0	7.3	65.2	216.5	224.7	754.6
Santa Cruz	48.0	—	—	55.3	43.0	35.5	—	—	—	41.5	198.0	269.5	—
Saveneta	—	—	—	—	—	—	—	—	—	—	—	—	—
Lago	23.0	9.6	7.7	7.3	155.5	18.3	19.9	8.5	13.1	39.2	300.7	183.9	786.7
Gemiddeld	37.5	11.6	7.8	41.4	92.5	33.4	12.5	14.8	10.7	60.5	214.1	228.9	765.7
<i>Bonaire</i>													
Kralendijk	44.6	17.0	5.0	9.2	110.3	37.0		33.5	9.4	86.9	316.4	262.6	931.9
Bolivia	20.5	11.0			172.0	75.5			32.0	92.0	376.0	206.0	985.0
Rinçon	71.0	25.4	17.7	10.8	171.3	48.6	7.2	32.4	8.6	75.6	230.5	238.6	937.7
Gemiddeld	45.4	17.8	7.6	6.7	151.2	53.7	2.4	22.0	16.7	84.8	307.6	235.7	951.6
BOVENWINDSE EILANDEN													
<i>St. Eustatius</i>													
Oranjestad	71.9	51.8	4.2	7.9	49.4	36.3	120.9	172.4	118.0	96.3	92.6	27.3	849.0
<i>Saba</i>													
Bottom	43.0	81.5	11.5	8.5	126.0	68.0	66.5	47.0	92.5	206.0	225.5	128.5	1104.5
St. Johns	43.0	81.5	11.5	8.5	124.5	64.5	67.0	47.0	92.5	206.0	—	—	—
Windwardside	43.0	81.5	11.5	8.5	124.5	64.5	66.5	47.0	92.5	206.0	233.0	133.0	1111.5
Gemiddeld	43.0	81.5	11.5	8.5	125.0	65.7	66.7	47.0	92.5	206.0	229.3	130.8	1107.5
<i>St. Martin</i>													
Phillipsburg	38.7	38.0	75.8	6.7	283.1	210.2	216.0	99.1	92.4	43.1	67.6	43.2	1213.9

REGENVAL OP DE NEDERLANDSE ANTILLEN, UITGEDRUKT IN MM

1945	Jan.	Febr.	Mrt.	April	Mei	Juni	Juli	Aug.	Sept.	Oct.	Nov.	Dec.	Jaar
BENEDENWINDSE EILANDEN													
<i>Curaçao</i>													
Westpunt	55.0	68.3	31.3	18.0	43.3	67.0	30.1	43.3	15.2	39.8	140.6	16.4	568.3
Barber	48.5	17.4	20.0	48.6	21.7	66.4	77.4	71.2	21.2	45.0	95.5	10.5	543.4
West Sotro	35.3	30.7	35.3	59.1	14.2	87.0	59.8	50.0	30.3	158.2	112.0	2.0	673.9
Dokterstuin	54.2	29.0	18.0	27.2	9.5	71.9	53.5	53.5	1.7	121.0	106.5	14.5	560.5
St. Willebrordus	36.5	35.4	17.6	22.5	8.5	2.5	9.0	26.0	5.2	42.8	79.5	0.4	285.9
Kleine Berg	29.7	31.1	15.5	27.2	16.9	38.3	11.0	39.7	13.0	42.2	51.5	2.7	318.8
Blauw	20.2	30.5	12.0	14.6	14.0	48.3	24.0	87.8	6.0	13.0	22.0	12.0	304.4
Hato	20.6	37.2	15.8	19.5	24.9	40.7	25.5	62.5	21.9	75.2	28.3	16.9	389.0
Santa Maria	—	—	—	—	—	—	—	—	—	—	—	—	—
St. Thomas College	14.2	66.4	23.5	2.1	23.8	39.9	24.4	94.0	13.1	26.3	57.9	15.6	401.2
Fort Nassau	14.7	40.2	20.1	1.0	5.8	15.3	21.0	93.4	13.9	34.1	40.9	17.3	317.7
Rust	6.5	26.5	—	—	16.5	30.4	13.0	62.5	42.5	31.0	50.0	11.2	290.1
Klein Kwartier	11.5	31.1	—	9.0	18.0	24.0	25.0	74.0	45.5	26.0	54.0	10.0	328.1
Zuurzak	—	—	—	—	—	—	—	—	—	—	—	—	—
Scherpenheuvel	21.7	46.8	16.9	2.4	25.7	28.6	34.5	73.8	53.4	45.6	70.2	16.0	435.6
Santa Rosa	20.2	31.9	11.2	—	23.2	32.8	21.8	80.3	34.8	53.6	72.9	12.1	394.8
Montagne	31.7	60.3	21.6	1.9	35.8	3.3	17.5	101.3	33.5	93.6	81.3	22.8	504.6
Groot St. Joris	6.8	42.0	7.0	—	29.3	39.0	15.8	66.0	34.8	120.0	97.2	10.5	468.4
Newport	1.4	76.2	26.0	35.6	46.0	27.7	71.4	79.5	35.6	37.9	59.4	7.7	504.4
Gemiddeld	25.2	41.2	17.2	17.0	22.2	39.0	31.5	68.2	24.8	59.1	71.7	11.1	428.2
<i>Aruba</i>													
Noord	—	—	—	—	26.0	11.7	8.8	50.1	2.0	43.5	5.5	3.9	—
Arendterrein	34.0	61.0	9.5	13.1	75.0	—	17.0	30.1	—	44.6	37.2	12.8	334.3
Oranjestad	40.8	60.4	—	12.5	112.0	14.9	15.5	15.0	1.1	109.5	32.8	17.2	431.7
Santa Cruz	70.0	60.0	—	—	—	—	—	—	—	36.0	38.0	—	—
Saveneta	—	—	—	36.0	—	2.9	3.1	27.5	—	60.2	—	—	—
Lago	15.1	59.1	16.8	20.4	5.7	29.8	13.4	28.4	5.8	74.9	18.0	4.1	291.5
Gemiddeld	40.0	60.1	6.6	20.5	54.7	9.9	11.6	30.2	2.2	61.4	26.3	9.5	333.0
<i>Bonaire</i>													
Kralendijk	21.5	55.9	30.6	5.0	—	57.5	11.0	70.7	18.5	34.5	89.9	13.5	408.6
Bolivia	14.0	14.0	20.6	—	—	41.0	—	76.5	16.0	16.0	51.0	24.0	273.1
Rinçon	29.1	33.2	51.3	9.2	37.0	80.4	29.0	92.4	52.0	56.2	127.8	10.6	608.2
Gemiddeld	21.5	34.4	34.2	4.7	12.3	59.6	13.3	79.9	28.8	35.6	89.6	16.0	429.9
BOVENWINDSE EILANDEN													
<i>St. Eustatius</i>													
Oranjestad	141.0	47.5	28.2	50.8	82.5	35.9	103.4	216.1	170.5	115.8	101.9	138.9	1232.5
<i>Saba</i>													
Bottom	97.0	27.0	69.0	65.0	118.0	—	107.4	136.9	76.5	126.5	76.0	117.0	—
St. Johns	—	—	—	—	—	—	—	—	—	—	—	—	—
Windwardside	97.0	27.0	70.0	65.0	119.0	—	109.2	137.9	79.0	128.5	—	—	—
Gemiddeld	97.0	27.0	69.5	65.0	118.5	—	108.3	137.4	77.8	127.5	76.0	117.0	—
<i>St. Martin</i>													
Phillipsburg	47.0	28.2	8.1	41.9	106.9	—	103.9	185.8	92.2	291.6	85.6	57.4	—

REGENVAL OP DE NEDERLANDSE ANTILLEN, UITGEDRUKT IN MM

1946	Jan.	Febr.	Mrt.	April	Mei	Juni	Juli	Aug.	Sept.	Oct.	Nov.	Dec.	Jaar
BENEDENWINDSE EILANDEN													
<i>Curaçao</i>													
Westpunt	37.0	89.5	6.0	2.0	62.8	23.9	36.0	4.5	.	182.8	142.9	170.9	758.3
Barber	28.6	50.2	.	.	57.6	37.0	42.6	.	.	172.2	146.0	209.1	743.3
Klein St. Martha	10.0	77.4	.	8.0	42.0	26.0	21.0	3.1	.	174.9	134.7	211.8	708.9
Dokterstuin	13.6	49.0	.	.	37.3	32.8	38.5	.	.	161.9	86.3	184.8	604.2
St. Willebrordus	30.4	67.0	.	.	5.0	22.4	16.4	.	.	91.4	146.7	175.1	554.4
Kleine Berg	44.0	28.3	.	8.7	15.5	32.0	34.3	0.3	11.2	70.6	107.3	95.1	447.3
Blauw	20.0	27.0	—	15.0	5.0	40.0	19.5	.	.	29.5	69.3	163.0	—
Hato	64.1	44.7	.	11.2	16.6	37.0	19.1	7.0	2.8	167.9	97.9	111.9	580.2
St. Thomas College	48.2	45.6	4.7	14.4	14.3	44.2	6.2	12.9	0.9	32.1	113.0	129.4	465.9
Fort Nassau	31.3	36.0	2.9	3.7	7.7	32.2	2.8	6.8	.	35.7	75.5	101.9	336.5
Rust	21.5	59.0	2.5	3.5	15.3	33.3	15.6	6.0	.	38.5	81.7	94.2	371.1
Suffivant	—	—	—	—	—	—	—	—	—	—	—	—	—
Cas Coraal	—	—	—	—	—	—	13.0	10.5	.	62.5	81.9	99.4	—
Ronde Klip	—	—	—	—	—	—	—	—	—	—	—	—	—
Klein Kwartier	34.0	33.5	7.0	5.6	25.5	28.5	14.5	7.0	.	36.5	120.5	95.1	407.7
Scherpenheuvel	54.2	42.1	4.4	15.3	13.2	34.3	9.4	9.7	0.1	33.1	122.5	95.3	433.6
Santa Rosa	47.1	39.9	.	11.5	13.7	43.3	15.0	2.7	.	40.9	95.8	90.1	400.0
Montagne	64.1	59.1	7.6	15.3	7.1	35.4	12.0	12.6	.	38.7	167.4	99.7	519.0
Groot St. Joris	44.5	48.0	5.1	6.8	6.8	33.0	22.0	5.2	.	35.8	102.5	98.5	408.2
Newport	49.0	93.2	5.3	20.8	10.9	40.6	13.7	41.4	.	12.5	230.6	116.3	634.3
Gemiddeld	37.7	52.3	2.8	8.3	21.0	33.9	19.5	7.2	8.3	78.7	117.9	130.1	517.7
<i>Aruba</i>													
Noord	18.3	19.4	4.8	.	7.8	19.3	10.8	0.5	.	20.0	33.8	73.5	208.2
Arendterrein	44.8	21.8	2.7	0.4	17.4	31.2	24.8	3.8	.	25.9	69.6	136.8	379.2
Oranjestad	18.9	30.8	.	.	19.7	39.3	3.2	.	.	49.5	96.5	193.6	431.5
Santa Cruz	35.0	—	.	.	—	48.0	.	.	.	27.0	67.0	183.0	—
Lagoterrein	29.5	47.9	2.4	6.0	18.0	41.0	10.6	5.8	0.4	13.8	173.8	220.6	569.8
Gemiddeld	29.3	30.0	2.0	1.3	15.7	35.8	9.9	2.0	0.1	27.2	88.1	161.5	402.9
<i>Bonaire</i>													
Kralendijk	33.0	40.5	16.9	2.6	5.1	33.7	13.7	9.7	.	51.4	57.5	105.6	369.7
Bolivia	32.0	39.0	20.0	.	.	31.0	.	.	.	48.0	42.0	69.0	281.0
Rinçon	47.2	82.3	7.0	.	12.7	30.4	17.0	0.5	.	49.9	206.2	108.4	561.6
Gemiddeld	37.4	53.9	14.6	0.9	5.9	31.7	10.2	3.4	.	49.8	101.9	94.3	404.0
BOVENWINDSE EILANDEN													
<i>St. Martin</i>													
Phillipsburg	29.8	11.2	13.0	33.3	60.0	37.4	72.4	107.4	76.0	114.8	192.8	26.9	775.0
<i>St. Eustatius</i>													
Oranjestad	37.8	52.2	27.0	52.6	31.2	24.9	64.3	124.5	99.3	93.5	79.3	16.8	703.4
Concordia	16.6	35.8	19.6	71.2	14.1	50.7	60.8	130.1	62.8	46.9	91.5	11.8	611.9
Gemiddeld	27.2	49.0	23.3	61.9	22.6	37.8	62.5	127.3	81.0	70.2	85.4	14.3	662.5
<i>Saba</i>													
Bottom	58.9	35.2	21.7	50.1	34.5	46.3	59.0	141.7	64.4	167.2	170.7	45.0	894.7



REPERTORY OF DEPARTMENTAL AND FIELD OFFICERS, 1919

NAME	CLASS	NO.	DATE	POST	STATUS	REMARKS
Wagner	114	1919	12	114	114	
Ward	115	1919	13	115	115	
Ward	116	1919	14	116	116	
Ward	117	1919	15	117	117	
Ward	118	1919	16	118	118	
Ward	119	1919	17	119	119	
Ward	120	1919	18	120	120	
Ward	121	1919	19	121	121	
Ward	122	1919	20	122	122	
Ward	123	1919	21	123	123	
Ward	124	1919	22	124	124	
Ward	125	1919	23	125	125	
Ward	126	1919	24	126	126	
Ward	127	1919	25	127	127	
Ward	128	1919	26	128	128	
Ward	129	1919	27	129	129	
Ward	130	1919	28	130	130	
Ward	131	1919	29	131	131	
Ward	132	1919	30	132	132	
Ward	133	1919	31	133	133	
Ward	134	1919	32	134	134	
Ward	135	1919	33	135	135	
Ward	136	1919	34	136	136	
Ward	137	1919	35	137	137	
Ward	138	1919	36	138	138	
Ward	139	1919	37	139	139	
Ward	140	1919	38	140	140	
Ward	141	1919	39	141	141	
Ward	142	1919	40	142	142	
Ward	143	1919	41	143	143	
Ward	144	1919	42	144	144	
Ward	145	1919	43	145	145	
Ward	146	1919	44	146	146	
Ward	147	1919	45	147	147	
Ward	148	1919	46	148	148	
Ward	149	1919	47	149	149	
Ward	150	1919	48	150	150	
Ward	151	1919	49	151	151	
Ward	152	1919	50	152	152	
Ward	153	1919	51	153	153	
Ward	154	1919	52	154	154	
Ward	155	1919	53	155	155	
Ward	156	1919	54	156	156	
Ward	157	1919	55	157	157	
Ward	158	1919	56	158	158	
Ward	159	1919	57	159	159	
Ward	160	1919	58	160	160	
Ward	161	1919	59	161	161	
Ward	162	1919	60	162	162	
Ward	163	1919	61	163	163	
Ward	164	1919	62	164	164	
Ward	165	1919	63	165	165	
Ward	166	1919	64	166	166	
Ward	167	1919	65	167	167	
Ward	168	1919	66	168	168	
Ward	169	1919	67	169	169	
Ward	170	1919	68	170	170	
Ward	171	1919	69	171	171	
Ward	172	1919	70	172	172	
Ward	173	1919	71	173	173	
Ward	174	1919	72	174	174	
Ward	175	1919	73	175	175	
Ward	176	1919	74	176	176	
Ward	177	1919	75	177	177	
Ward	178	1919	76	178	178	
Ward	179	1919	77	179	179	
Ward	180	1919	78	180	180	
Ward	181	1919	79	181	181	
Ward	182	1919	80	182	182	
Ward	183	1919	81	183	183	
Ward	184	1919	82	184	184	
Ward	185	1919	83	185	185	
Ward	186	1919	84	186	186	
Ward	187	1919	85	187	187	
Ward	188	1919	86	188	188	
Ward	189	1919	87	189	189	
Ward	190	1919	88	190	190	
Ward	191	1919	89	191	191	
Ward	192	1919	90	192	192	
Ward	193	1919	91	193	193	
Ward	194	1919	92	194	194	
Ward	195	1919	93	195	195	
Ward	196	1919	94	196	196	
Ward	197	1919	95	197	197	
Ward	198	1919	96	198	198	
Ward	199	1919	97	199	199	
Ward	200	1919	98	200	200	
Ward	201	1919	99	201	201	
Ward	202	1919	100	202	202	

