

C 1 1 3 7

1834

DEPARTEMENT VAN DEN LANDBOUW  
IN SURINAME.

METEOROLOGISCHE  
WAARNEMINGEN,

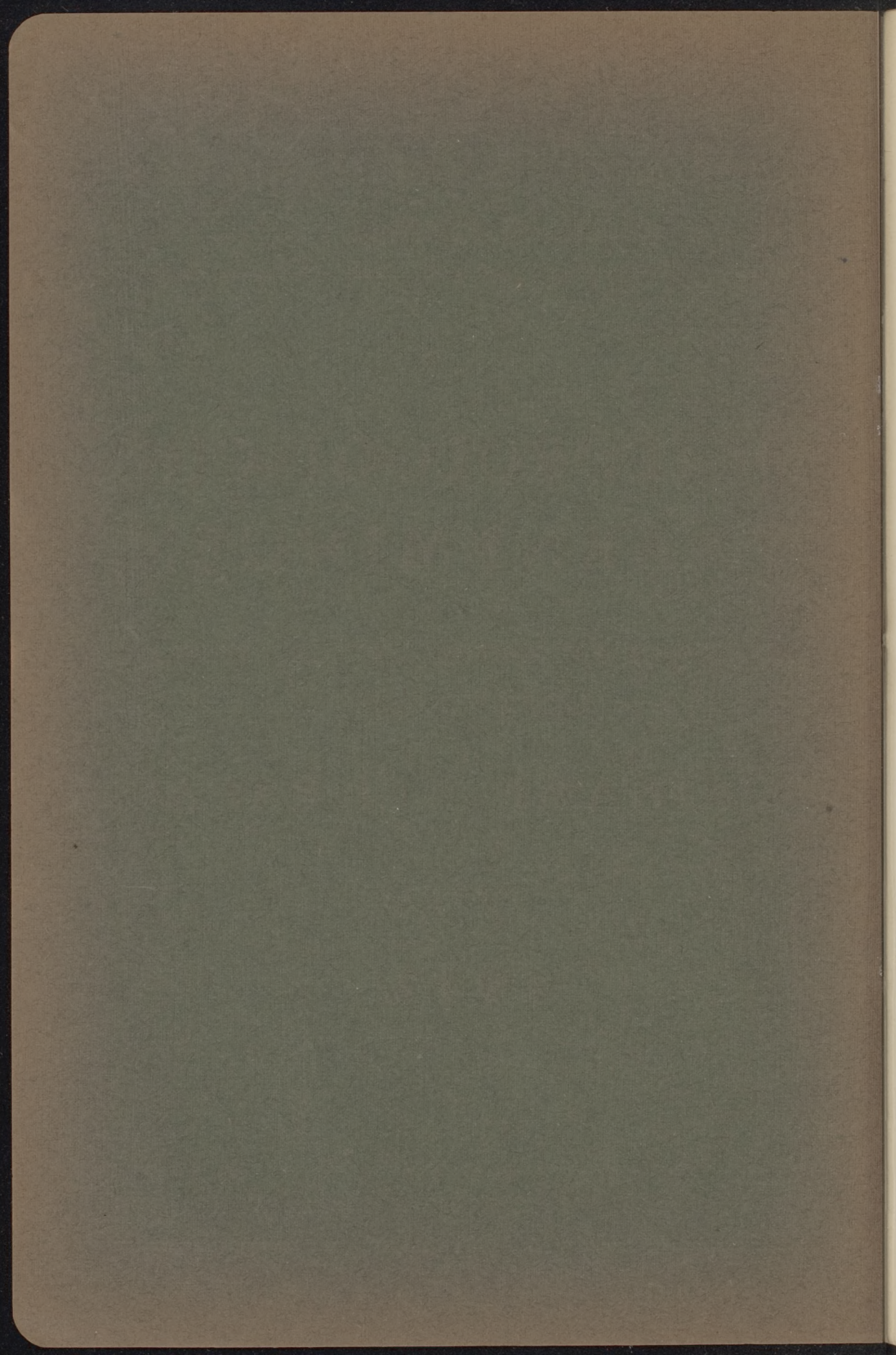
GEDAAN OP DE METEOROLOGISCHE STATIONS  
IN DE KOLONIËN

SURINAME EN CURAÇAO.

IN HET JAAR

1 9 1 2.

GEDRUKT BIJ DE FIRMA ROELOFFZEN-HÜBNER & VAN SANTEN  
TE AMSTERDAM.



DEPARTEMENT VAN DEN LANDBOUW  
===== IN SURINAME. =====  
=====

METEOROLOGISCHE  
WAARNEMINGEN,

GEDAAN OP DE METEOROLOGISCHE STATIONS  
===== IN DE KOLONIËN =====

SURINAME EN CURAÇAO.

IN HET JAAR

**1 9 1 2.**



## Weerkundige waarnemingen gedaan te Paramaribo in de maand Januari 1912.

DATUM.	LUCHTDRIKKING in mM. herleid op 0° C.			TEMPERATUUR. ° C.					DAMPDRUKKING in mM.			BETREKKELIJKE VOCHTIGHEID %.			WINDRICHTING EN KRACHT. Beaufort (0—12).			BEWOLKING (0—10)			Neerslag mM. afgetapt. 8 a.
	8 a.	2 p.	6 p.	8 a.	2 p.	6 p.	Max.	Min.	8 a.	2 p.	6 p.	8 a.	2 p.	6 p.	8 a.	2 p.	6 p.	8 a.	2 p.	6 p.	
	1	762.8	762.2	761.5	25.4	29.0	25.8	29.0	23.2	21.3	23.8	23.2	89	80	94	ENE 2	NNE 2	ENE 2	4	8	
2	62.8	62.2	61.5	22.8	28.2	25.8	29.4	23.0	20.1	23.2	22.7	97	82	92	E 2	NE 3	NE 2	10	8	8	1.5
3	63.0	62.2	62.2	24.1	28.6	26.4	28.2	20.1	19.3	25.1	21.7	87	86	85	ENE 1	ENE 3	ENE 3	2	6	8	0.2
4	63.0	62.2	62.3	23.5	28.4	25.2	29.2	20.8	19.3	25.0	22.4	90	87	94	ENE 2	NE 4	ENE 2	4	6	8	0.1
5	62.6	61.8	61.5	21.8	29.3	25.9	28.7	17.6	17.5	24.2	23.2	90	80	93	ENE 1	NE 3	NE 2	3	6	7	0.2
6	62.7	61.1	61.5	24.3	29.0	26.0	29.8	19.1	18.8	23.3	23.1	83	78	93	ENE 1	NE 2	ENE 1	2	6	8	—
7	63.5	62.3	62.2	22.8	28.8	26.0	29.2	20.0	18.6	24.5	22.7	91	83	91	ENE 1	NE 2	ENE 3	7	6	7	—
8	62.5	62.1	61.8	25.2	27.8	25.8	29.0	21.4	20.5	24.5	23.2	86	88	94	ENE 2	NE 3	ENE 2	6	7	8	0.5
9	64.5	62.5	62.3	24.4	27.6	25.2	28.4	21.4	20.4	23.6	20.9	90	86	88	ENE 1	NE 4	ENE 3	7	8	8	2.5
10	64.3	63.2	62.6	23.4	27.6	25.6	28.0	20.4	18.6	24.2	20.2	87	88	83	ENE 1	ENE 2	ENE 2	2	8	7	1.0
11	63.6	62.0	62.3	23.4	29.0	26.2	29.0	19.4	19.2	24.0	23.0	90	80	91	ENE 1	NE 2	NE 2	2	7	8	—
12	63.4	62.6	62.2	22.2	26.4	26.2	29.8	20.8	18.3	20.9	23.4	92	82	93	NE 1	ENE 2	ENE 2	8	9	8	—
13	63.6	62.3	62.5	23.8	29.0	25.6	28.0	20.4	19.3	24.2	22.2	88	81	91	NE 2	NE 3	NE 2	4	6	8	1.2
14	63.1	62.1	62.5	23.4	29.8	26.0	29.5	19.9	19.5	24.6	21.9	91	79	88	ENE 2	NE 2	NE 1	3	8	8	0.3
15	63.4	62.4	62.6	24.1	29.5	26.2	30.0	20.9	19.1	24.1	23.4	86	79	93	NE 1	NE 2	NE 2	2	8	7	—
16	62.6	62.1	61.5	23.2	29.6	25.8	29.8	19.6	19.1	23.6	22.7	90	77	92	ENE 2	NE 4	ENE 2	2	6	8	—
17	62.9	62.0	61.7	21.8	29.2	26.4	29.8	19.0	18.3	24.1	22.9	95	80	89	ENE 1	NE 2	NE 2	8	6	8	—
18	62.6	61.3	61.7	24.4	30.6	26.4	29.6	20.6	19.8	23.8	23.1	88	73	90	ENE 1	NE 3	NE 2	6	6	8	—
19	62.0	61.3	61.3	25.4	29.8	26.4	31.0	23.0	21.1	24.3	23.1	88	78	90	ENE 3	NE 3	NE 2	4	7	8	0.3
20	62.5	61.6	61.4	24.4	29.2	26.2	30.2	20.4	20.2	23.2	23.0	89	77	91	ENE 1	NE 4	NE 2	2	4	7	—
21	62.0	61.1	61.5	24.8	29.0	25.6	30.4	20.8	20.2	24.6	22.8	87	83	93	ENE 1	NE 3	ENE 2	2	6	7	0.5
22	62.5	62.3	62.5	24.0	27.2	25.7	29.6	21.2	19.3	20.7	20.6	87	77	84	NE 1	NE 2	ENE 1	7	7	8	0.3
23	62.0	61.5	61.5	25.0	27.8	27.4	27.8	22.4	20.6	25.6	22.3	87	92	82	NE 2	NE 3	NE 2	8	8	8	2.5
24	62.0	61.3	61.4	24.3	29.0	26.6	28.0	22.8	21.8	23.8	23.0	97	80	89	ENE 1	NE 4	ENE 3	7	7	8	4.5
25	62.0	61.6	61.6	25.0	29.0	25.6	29.8	22.6	21.4	22.9	22.8	91	77	93	ENE 2	ENE 3	NE 2	8	8	8	0.2
26	62.1	61.3	61.6	23.8	29.2	26.0	29.5	20.0	20.2	23.6	21.9	92	78	88	NE 2	NE 4	NE 2	4	3	8	4.5
27	61.8	61.2	61.5	26.2	28.8	26.4	29.2	23.0	22.6	23.5	22.9	90	80	89	NE 2	NE 2	ENE 3	7	7	8	—
28	62.0	61.5	61.5	25.4	30.4	26.4	29.2	22.9	20.0	23.8	22.3	83	73	87	NE 2	NNE 3	NE 2	2	6	8	—
29	62.8	62.4	61.6	25.8	29.8	26.0	29.8	24.8	22.9	24.1	22.1	93	77	89	ENE 2	NE 4	ENE 2	8	6	8	—
30	62.8	62.1	61.4	23.8	29.2	26.2	30.0	22.8	21.0	24.5	21.8	96	81	86	NE 1	NNE 4	NE 2	9	6	8	0.2
31	63.0	62.0	61.6	25.0	28.2	25.6	29.6	22.0	21.8	24.3	22.0	93	85	90	NE 1	NE 2	NE 1	8	7	8	—
Som	1946.4	1919.7	1916.9	746.9	894.0	806.6	908.5	656.3	620.1	739.6	696.5	2783	2507	2785	46	89	63	158	207	242	21.5
Gem.	62.8	61.9	61.8	24.1	28.8	26.0	29.3	21.2	20.0	23.9	22.5	90	81	90	1	3	2	5	7	8	0.7

## Weerkundige waarnemingen gedaan te Paramaribo in de maand Februari 1912.

DATUM.	LUCHTDRUKKING in mM. herleid op 0° C.			TEMPERATUUR. ° C.					DAMPDRUKKING in mM.			BETREKKELIJKE VOCHTIGHEID %.			WINDRICHTING EN KRACHT. Beaufort (0—12).			BEWOLKING (0—10)			Neerslag mM. afgetapt.	
	8 a.	2 p.	6 p.	8 a.	2 p.	6 p.	Max.	Min.	8 a.	2 p.	6 p.	8 a.	2 p.	6 p.	8 a.	2 p.	6 p.	8 a.	2 p.	6 p.		8 a.
	1	762.3	761.6	<b>761.3</b>	24.9	29.0	26.4	28.5	23.9	22.2	<b>25.0</b>	23.7	<b>95</b>	84	93	ENE 1	NNE 4	NE 3	8	6		7
2	62.3	61.2	<b>61.3</b>	25.8	29.6	26.9	29.5	23.0	20.1	24.0	23.8	82	78	90	ENE 2	NE 4	NE 3	6	7	7	—	
3	62.9	62.0	61.5	23.6	29.6	26.2	30.0	20.0	18.7	23.8	22.6	86	77	90	ENE 1	NE 4	NE 2	2	6	8	—	
4	62.8	62.0	61.7	<b>26.0</b>	29.2	<b>25.6</b>	30.0	22.0	19.6	24.9	22.2	<b>79</b>	83	91	NE 2	NNE 3	NE 2	4	7	8	—	
5	62.3	61.5	61.7	25.8	29.0	26.2	29.2	22.0	22.1	24.8	23.0	90	83	91	NE 2	NE 4	NE 2	7	6	7	0.8	
6	62.5	61.8	61.8	21.2	<b>26.2</b>	26.0	29.5	20.0	17.5	23.0	<b>20.9</b>	94	<b>91</b>	84	NE 1	NE 3	ENE 2	6	8	8	—	
7	63.0	62.4	61.5	24.2	29.4	26.2	<b>27.8</b>	21.6	20.7	24.4	23.4	92	80	93	ENE 1	NE 4	ENE 2	8	6	8	2.0	
8	63.4	62.4	61.4	23.0	29.8	26.2	29.8	19.4	18.9	24.6	23.0	91	79	91	ENE 1	ENE 2	NE 2	3	8	8	—	
9	63.1	62.4	62.5	24.1	29.2	26.2	30.2	19.3	19.3	24.1	23.4	87	80	93	NE 1	NE 4	NE 2	2	7	8	—	
10	62.5	61.5	61.5	24.0	28.8	26.8	30.6	21.2	19.3	23.5	<b>24.3</b>	87	80	93	NE 1	NE 3	NE 3	7	7	6	—	
11	62.5	<b>61.1</b>	<b>61.3</b>	25.0	29.4	27.2	30.0	21.0	20.2	24.4	24.0	86	80	90	NE 1	ENE 4	ENE 2	4	7	8	—	
12	63.4	62.3	<b>61.3</b>	24.2	29.6	26.6	31.0	20.6	19.6	24.7	22.8	88	80	88	ENE 1	NE 4	ENE 2	2	4	8	—	
13	63.5	62.4	61.4	22.2	29.8	26.2	31.0	19.0	17.8	21.6	22.2	89	69	88	ENE 1	NNE 3	NE 2	3	6	8	—	
14	63.0	62.3	62.1	<b>21.0</b>	30.2	<b>27.3</b>	30.0	18.0	<b>16.9</b>	24.3	23.1	92	76	86	NE 1	ENE 2	NE 1	3	4	8	—	
15	62.2	61.2	61.5	22.4	29.8	26.8	<b>31.2</b>	19.4	18.0	21.2	22.2	90	68	85	ENE 1	NE 4	NE 4	4	6	8	—	
16	62.7	61.3	61.5	23.6	29.8	26.3	30.0	18.4	17.2	20.8	21.5	80	66	85	ENE 2	NE 2	NE 2	2	6	8	—	
17	63.0	62.0	61.4	23.2	30.7	26.2	30.3	<b>17.6</b>	17.5	<b>18.6</b>	22.2	83	<b>56</b>	88	ENE 1	NE 3	ENE 2	3	4	8	—	
18	63.6	62.3	62.2	22.2	29.0	26.2	31.0	19.0	17.2	22.7	23.0	87	76	91	ENE 1	NE 4	ENE 2	4	6	8	—	
19	62.7	62.0	61.5	24.0	<b>30.8</b>	26.2	29.8	19.5	18.1	22.2	22.4	82	67	89	ENE 1	ENE 2	NE 2	2	6	<b>9</b>	—	
20	62.3	<b>61.1</b>	61.5	24.4	30.2	25.8	30.8	22.0	19.6	23.0	22.7	87	72	92	NE 1	NE 3	NE 2	3	6	8	—	
21	<b>62.1</b>	61.3	<b>61.3</b>	23.8	29.8	26.1	30.4	19.5	18.7	18.8	21.9	85	60	87	ENE 1	ENE 3	NE 2	4	<b>3</b>	8	—	
22	63.3	62.8	62.2	23.2	28.8	26.0	30.2	19.2	17.1	23.9	22.7	81	81	91	NE 2	NE 2	NE 2	4	7	8	—	
23	64.4	63.0	62.5	23.6	29.4	26.6	29.0	19.2	18.1	23.1	21.2	84	76	<b>82</b>	ENE 2	NE 3	ENE 4	7	8	8	—	
24	<b>65.0</b>	<b>64.2</b>	<b>63.4</b>	25.8	29.0	25.9	30.0	22.8	21.2	23.3	22.0	85	78	89	ENE 3	ENE 4	ENE 3	4	7	8	—	
25	62.8	61.9	61.7	25.5	27.8	25.9	29.6	23.9	22.2	23.5	22.4	92	84	90	ENE 2	NE 4	ENE 2	7	8	8	—	
26	62.3	61.9	61.4	25.8	28.0	<b>25.6</b>	29.4	22.8	21.1	21.5	21.4	85	77	88	ENE 3	NE 3	ENE 2	4	8	8	0.4	
27	63.0	62.4	62.4	25.2	28.8	26.2	28.2	23.6	21.6	21.0	23.0	91	71	91	ENE 2	NE 3	ENE 2	8	4	8	<b>0.2</b>	
28	62.6	62.0	62.0	25.8	29.2	26.0	29.8	<b>24.6</b>	<b>22.7</b>	23.4	23.5	92	78	<b>94</b>	NE 3	NNE 4	NE 2	8	7	<b>9</b>	—	
29	62.8	62.4	61.6	25.6	29.6	<b>56.6</b>	30.0	23.3	21.8	23.4	23.0	90	76	<b>94</b>	NE 2	ENE 4	NE 2	7	6	<b>9</b>	—	
Som	1824.3	1798.7	1790.5	697.1	849.5	761.4	867.0	605.8	564.9	667.5	657.5	2532	2206	2597	43	96	65	136	181	230	6.2	
Gem.	62.9	62.0	61.7	24.0	29.3	26.3	29.9	21.0	19.5	23.0	22.7	87	76	90	2	3	2	5	6	8	0.2	

## Weerkundige waarnemingen gedaan te Paramaribo in de maand Maart 1912.

DATUM.	LUCHTDRIKKING in mM. herleid op 0° C.			TEMPERATUUR. ° C.					DAMPDRUKKING in mM.			BETREKKELIJKE VOCHTIGHEID %.			WINDRICHTING EN KRACHT. Beaufort (0—12).			BEWOLKING (0—10)			Neerslag mM. afgetapt.	
	8 a.	2 p.	6 p.	8 a.	2 p.	6 p.	Max.	Min.	8 a.	2 p.	6 p.	8 a.	2 p.	6 p.	8 a.	2 p.	6 p.	8 a.	2 p.	6 p.		8 a.
	1	763.5	762.3	761.7	25.0	28.8	25.8	29.8	22.8	22.2	23.5	21.7	94	80	88	ENE 2	NE 4	ENE 2	6	8		8
2	63.0	62.4	62.1	25.0	28.4	<b>25.2</b>	29.0	21.4	20.0	24.6	21.6	85	85	91	NE 2	NE 3	NE 2	4	6	9	—	
3	63.3	62.4	62.5	24.6	28.2	25.8	28.8	22.6	21.2	24.3	23.2	92	85	94	ENE 2	NE 4	ENE 3	8	8	9	0.3	
4	63.6	63.2	62.5	25.6	28.2	25.8	28.5	24.0	21.4	23.8	22.9	88	84	93	NE 3	NNE 4	ENE 3	7	8	8	—	
5	63.9	<b>64.3</b>	<b>63.1</b>	25.8	28.0	25.4	28.5	22.5	20.9	24.6	21.9	85	88	91	ENE 2	NE 4	NE 2	4	6	8	—	
6	63.9	63.2	63.0	25.8	29.0	25.8	28.8	22.8	21.7	23.8	23.2	88	80	94	NE 2	NE 4	NE 3	4	4	9	—	
7	63.3	63.6	63.0	25.4	29.2	26.2	29.4	23.2	21.3	21.1	22.4	89	70	89	E 3	ENE 4	NE 3	6	7	7	—	
8	63.4	62.8	63.0	25.2	29.8	25.6	29.5	<b>19.2</b>	18.4	22.8	22.2	77	73	91	NE 3	NE 4	NE 4	3	6	7	—	
9	63.4	62.9	62.5	25.2	29.0	26.4	30.2	19.4	17.9	23.1	23.3	95	78	91	ENE 2	ENE 3	NE 3	2	8	8	—	
10	63.1	63.5	62.2	23.2	29.6	26.0	29.2	19.8	18.7	23.4	23.1	89	76	93	ENE 1	NE 4	NE 3	6	6	7	—	
11	62.9	61.9	61.6	22.6	29.6	26.0	30.0	19.8	18.8	24.7	22.5	92	80	90	ENE 1	NE 3	NE 2	6	6	7	—	
12	63.3	62.9	62.4	25.2	28.8	25.8	<b>30.8</b>	21.6	20.5	23.5	22.9	86	80	93	ENE 2	NNE 3	NE 3	4	9	9	—	
13	<b>64.1</b>	63.8	62.4	26.0	29.7	26.2	30.1	24.0	21.9	<b>19.8</b>	22.6	88	64	90	ENE 3	ENE 3	NE 2	6	5	7	—	
14	62.8	61.9	61.7	25.9	29.2	25.6	30.2	23.5	21.6	23.2	22.8	87	77	93	ENE 2	NE 4	NE 3	4	3	7	0.1	
15	62.1	61.3	61.1	24.4	<b>30.4</b>	25.6	30.0	19.7	<b>17.3</b>	20.4	21.4	<b>76</b>	<b>63</b>	88	ENE 1	NE 3	NE 1	2	4	9	—	
16	62.9	<b>61.1</b>	61.3	23.0	30.2	25.9	<b>30.8</b>	19.4	18.1	23.0	<b>23.6</b>	88	72	<b>95</b>	ENE 1	ENE 2	NE 2	4	6	8	—	
17	62.5	62.5	61.3	24.0	29.8	26.0	30.5	20.9	18.6	23.9	23.1	84	77	93	NE 2	NE 3	NE 2	6	8	8	—	
18	62.6	62.0	61.8	<b>22.2</b>	29.0	26.5	30.2	20.0	18.1	23.3	22.4	91	78	87	NE 1	NE 2	ENE 1	6	6	9	—	
19	62.3	62.1	61.3	24.6	28.2	26.1	29.2	22.2	20.5	21.8	21.1	89	77	84	ENE 1	ENE 2	ENE 1	8	9	9	—	
20	62.3	62.1	60.9	26.4	29.5	26.6	28.3	24.2	21.7	22.0	22.8	85	71	88	ENE 2	ENE 2	ENE 3	6	6	9	—	
21	63.8	62.2	61.4	26.4	26.6	26.0	30.0	24.0	22.1	21.6	21.9	86	83	88	NE 2	NNE 3	ENE 2	8	8	8	—	
22	63.0	62.0	61.6	24.6	<b>25.7</b>	25.4	28.1	23.4	21.1	22.3	21.5	94	<b>91</b>	90	E 1	ENE 1	NE 1	10	8	9	4.8	
23	62.8	62.0	62.1	25.8	29.6	26.1	<b>26.4</b>	24.2	21.1	23.0	23.5	85	75	93	ENE 2	NE 3	ENE 3	8	6	8	9.0	
24	63.3	61.8	61.4	23.8	30.2	26.4	30.2	22.6	20.8	23.4	21.9	95	73	85	ENE 1	NE 3	NE 2	8	6	8	8.8	
25	62.6	62.1	61.6	26.5	29.8	26.0	30.2	23.8	<b>22.8</b>	24.1	21.9	89	77	88	NE 2	NE 3	NE 1	7	6	8	—	
26	62.8	62.3	61.6	26.4	29.6	26.2	30.4	<b>24.8</b>	21.1	<b>24.7</b>	23.4	82	80	93	E 2	ENE 2	ENE 2	7	5	8	—	
27	62.6	61.2	61.5	<b>26.8</b>	30.2	26.6	30.2	24.2	22.6	23.4	21.6	86	73	83	ENE 2	ENE 3	NE 2	7	6	8	—	
28	61.8	61.2	61.1	25.2	30.0	26.6	<b>30.8</b>	23.8	22.0	21.5	<b>20.8</b>	93	68	<b>80</b>	NE 2	NE 4	NE 2	8	6	8	5.0	
29	<b>61.6</b>	61.3	<b>60.4</b>	26.2	27.8	26.2	30.2	22.6	20.6	23.5	21.8	92	84	86	ENE 2	NNE 2	NE 1	6	8	9	1.7	
30	62.2	61.9	61.5	25.2	29.0	<b>26.8</b>	29.0	23.4	21.6	21.3	24.1	91	71	92	NE 1	NE 2	NE 2	9	6	8	15.5	
31	62.6	61.8	61.3	23.2	29.6	26.4	29.2	23.0	20.6	23.0	23.3	<b>97</b>	75	91	E 1	NNE 2	NNE 1	10	8	8	<b>22.5</b>	
Som	1915.3	1932.0	1916.4	774.8	900.7	807.0	916.1	692.8	637.2	712.4	696.4	2728	2388	2785	56	93	68	190	202	252	67.8	
Gem.	62.9	62.3	61.8	25.0	29.5	26.0	29.6	22.3	20.6	23.0	22.5	88	77	90	2	3	2	6	7	8	2.2	

## Weerkundige waarnemingen gedaan te Paramaribo in de maand April 1912.

DATUM.	LUCHTDRIKKING in mM. herleid op 0° C.			TEMPERATUUR. ° C.					DAMPDRUKKING in mM.			BETREKKELIJKE VOCHTIGHEID %.			WINDRICHTING EN KRACHT. Beaufort (0—12).			BEWOLKING (0—10)			Neerslag mM. afgetapt.
	8 a.	2 p.	6 p.	8 a.	2 p.	6 p.	Max.	Min.	8 a.	2 p.	6 p.	8 a.	2 p.	6 p.	8 a.	2 p.	6 p.	8 a.	2 p.	6 p.	
1	<b>761.7</b>	761.3	761.3	<b>23.0</b>	27.2	26.0	30.2	22.8	20.0	21.6	21.5	<b>96</b>	80	86	N 1	NE 1	NE 1	<b>10</b>	7	<b>9</b>	<b>37.0</b>
2	<b>61.7</b>	61.3	61.3	24.4	29.6	26.8	28.0	22.5	20.4	23.2	23.5	90	75	90	ENE 1	NE 2	NNE 2	9	7	8	18.0
3	62.8	61.8	61.7	26.0	29.8	26.7	30.0	23.2	21.3	23.5	24.1	85	75	93	NE 2	NNE 2	ENE 1	8	7	8	<b>0.2</b>
4	63.0	62.2	61.5	24.2	27.2	25.4	30.8	23.6	21.5	22.8	22.3	<b>96</b>	85	93	E 1	NNE 1	NE 1	<b>10</b>	<b>9</b>	<b>9</b>	17.0
5	63.0	62.0	61.3	25.4	30.2	26.8	28.8	21.2	20.9	23.0	22.6	87	72	86	ENE 2	E 3	ENE 2	3	6	8	2.2
6	62.0	62.3	61.1	24.2	29.8	<b>28.0</b>	30.6	21.0	20.3	23.7	24.4	91	<b>66</b>	87	NE 1	NNE 3	ENE 3	<b>2</b>	4	6	—
7	<b>61.7</b>	<b>60.9</b>	<b>59.4</b>	25.6	30.6	26.6	30.4	21.4	21.8	23.4	23.2	90	72	89	ENE 1	NE 3	NE 2	<b>2</b>	6	8	—
8	61.8	61.0	60.4	26.8	31.2	27.2	31.0	22.6	21.0	23.7	23.8	80	70	89	E 2	NE 4	ENE 2	4	4	8	—
9	62.1	61.8	61.2	26.0	30.0	27.6	31.6	24.6	22.7	22.7	<b>24.5</b>	91	72	92	NE 1	NE 2	ENE 2	8	4	8	—
10	62.1	61.2	61.5	24.6	29.0	27.0	<b>31.8</b>	24.0	22.0	22.7	23.7	<b>96</b>	76	90	E 1	NNE 2	NNE 1	<b>10</b>	8	8	9.5
11	62.1	61.9	61.3	<b>27.6</b>	28.2	26.2	29.2	24.2	20.9	<b>21.4</b>	23.0	77	75	91	E 2	NE 1	NE 2	4	8	8	0.5
12	62.3	61.3	61.3	25.6	29.8	26.2	30.4	21.2	19.9	24.1	23.0	82	77	91	NE 2	NNE 2	NNE 2	6	6	8	—
13	62.3	61.8	61.3	25.6	30.5	27.0	30.2	20.8	20.6	22.2	23.9	85	68	90	ENE 2	NE 2	NNE 2	7	4	8	—
14	62.6	61.5	61.2	26.6	31.0	26.8	31.0	23.0	21.2	23.8	24.1	82	71	92	ENE 2	NE 3	ENE 2	6	6	8	—
15	63.0	62.1	61.8	25.4	30.2	26.8	31.0	20.2	20.4	23.9	24.1	85	75	92	NE 2	NNE 2	ENE 2	7	6	7	—
16	62.3	61.6	61.6	26.2	28.6	25.6	30.2	<b>20.0</b>	20.2	23.0	22.8	80	79	93	ENE 1	NE 2	NE 2	3	<b>9</b>	8	—
17	62.1	61.5	61.5	26.4	30.0	26.4	29.6	24.2	<b>23.3</b>	23.4	22.3	91	74	87	ENE 2	ENE 2	NE 2	7	5	7	1.5
18	63.1	62.5	62.0	26.8	29.2	26.2	31.0	23.2	23.0	22.8	22.2	88	76	88	E 1	ENE 2	ENE 2	7	4	6	—
19	63.1	<b>63.4</b>	61.9	24.8	29.4	26.3	31.0	22.5	21.9	23.1	22.9	94	76	90	ENE 1	NE 1	NNE 2	8	4	8	—
20	62.3	62.0	61.5	25.6	30.4	26.4	30.0	22.0	20.2	21.6	22.9	83	67	89	NE 2	ENE 1	NE 1	4	<b>3</b>	8	—
21	62.3	61.5	61.3	25.8	<b>30.8</b>	27.2	31.2	21.0	21.3	23.7	23.8	86	72	89	NNE 2	NE 2	NNE 2	<b>2</b>	6	6	—
22	62.8	61.8	61.3	25.6	30.0	26.2	31.0	21.4	21.2	22.3	23.8	87	70	<b>94</b>	ENE 2	NNE 2	NE 1	8	4	7	—
23	62.3	62.5	62.3	26.4	30.5	26.2	30.8	20.4	<b>20.1</b>	23.5	23.4	79	72	93	NE 2	NNE 2	NE 2	4	5	8	—
24	62.8	62.7	62.3	26.8	27.4	25.6	31.2	22.0	22.6	22.7	<b>21.4</b>	86	84	88	NE 2	NNE 2	NE 1	4	6	7	—
25	<b>64.2</b>	63.0	62.5	27.4	29.0	26.5	32.0	23.2	20.7	22.7	22.4	<b>76</b>	76	87	ENE 1	NE 2	NE 2	4	<b>9</b>	8	—
26	64.1	63.1	<b>62.7</b>	25.2	28.2	<b>25.5</b>	30.0	<b>25.0</b>	22.4	23.0	21.5	94	81	89	ENE 1	ENE 1	NNE 1	8	6	7	3.5
27	62.6	61.2	61.5	25.7	28.8	25.6	28.4	23.1	22.3	23.9	22.8	91	81	93	ENE 1	NE 2	NNE 2	4	8	8	12.5
28	62.3	61.5	61.5	24.0	<b>27.0</b>	26.0	29.0	23.2	21.2	23.5	21.7	<b>96</b>	<b>89</b>	87	ENE 2	NE 2	NE 2	<b>10</b>	8	8	6.0
29	62.3	62.0	61.3	26.4	29.8	26.4	<b>27.4</b>	21.8	21.1	23.7	21.7	82	76	<b>85</b>	NE 2	ENE 2	ENE 1	<b>2</b>	<b>3</b>	<b>2</b>	1.6
30	62.8	62.1	61.7	24.6	28.4	26.0	30.8	24.2	21.6	<b>24.6</b>	23.5	94	85	<b>94</b>	ENE 2	NE 2	NE 2	<b>10</b>	8	8	17.0
Som	1875.6	1855.8	1844.5	768.7	781.8	793.2	898.4	683.7	637.9	693.2	690.8	2620	2167	2697	47	60	52	181	180	225	126.5
Gem.	62.5	61.5	61.5	25.6	26.0	26.4	29.9	22.8	21.2	23.1	23.0	87	72	89	2	2	2	6	6	7	4.2

## Weerkundige waarnemingen gedaan te Paramaribo in de maand Mei 1912.

DATUM.	LUCHTDRIKKING in mM. herleid op 0° C.			TEMPERATUUR. ° C.					DAMPDRUKKING in mM.			BETREKKELIJKE VOCHTIGHEID %.			WINDRICHTING EN KRACHT. Beaufort (0—12).			BEWOLKING (0—10)			Neerslag in mM. afgetapt.
	8 a.	2 p.	6 p.	8 a.	2 p.	6 p.	Max.	Min.	8 a.	2 p.	6 p.	8 a.	2 p.	6 p.	8 a.	2 p.	6 p.	8 a.	2 p.	6 p.	
	1	762.8	762.6	761.3	24.4	27.4	26.8	28.8	23.6	22.1	23.1	22.6	<b>97</b>	85	86	ESE 1	ENE 1	NE 2	<b>10</b>	<b>10</b>	
2	62.8	62.1	61.3	26.8	29.4	27.2	29.0	24.0	21.8	24.4	23.8	<b>83</b>	80	89	ENE 2	ENE 2	NE 1	6	6	8	12.0
3	62.6	62.0	61.8	25.2	27.4	26.2	29.8	23.0	22.0	<b>25.2</b>	22.6	93	93	90	ENE 1	NE 1	ENE 2	6	6	8	<b>0.5</b>
4	61.8	61.5	61.6	26.6	31.0	26.4	28.8	22.8	21.6	23.8	22.3	<b>83</b>	71	87	ENE 1	ENE 2	NE 2	<b>4</b>	<b>3</b>	8	5.7
5	62.8	61.8	61.5	26.4	31.0	26.9	31.0	22.8	<b>23.3</b>	23.8	23.4	91	71	89	ENE 1	NE 2	NE 2	8	6	<b>7</b>	—
6	62.5	61.5	61.5	25.0	29.0	26.6	31.2	23.6	22.5	24.6	21.8	96	83	84	ESE 2	NE 2	NNE 1	<b>10</b>	8	8	0.8
7	62.6	61.2	60.2	25.4	28.8	26.6	29.4	24.4	22.3	24.5	22.8	93	83	88	NE 1	NNE 1	NE 1	<b>10</b>	7	8	32.0
8	62.2	61.3	<b>60.1</b>	27.0	27.8	27.0	29.0	25.0	<b>23.3</b>	24.1	22.1	88	87	83	ENE 2	NE 2	ENE 2	9	8	8	4.5
9	62.9	62.1	62.1	26.6	31.2	26.8	29.2	23.0	21.6	23.7	23.2	<b>83</b>	<b>70</b>	89	ENE 1	NE 2	NNE 1	6	6	8	11.0
10	<b>61.5</b>	<b>61.1</b>	61.5	26.4	30.0	26.8	<b>31.6</b>	21.8	21.7	24.0	23.5	85	76	90	ENE 1	NNE 3	NE 2	<b>4</b>	<b>4</b>	<b>7</b>	—
11	62.0	61.3	61.3	24.6	30.0	27.2	30.8	21.8	21.8	22.7	23.2	95	72	87	NE 1	NE 4	NE 2	8	6	<b>7</b>	<b>0.5</b>
12	62.3	61.2	61.3	27.2	<b>30.4</b>	27.4	30.6	23.0	22.4	24.2	22.3	<b>83</b>	75	<b>82</b>	ENE 1	NE 3	ENE 2	7	4	<b>7</b>	—
13	63.3	62.3	62.5	25.6	28.6	26.2	30.8	23.2	21.6	24.7	23.0	89	85	91	NE 2	NE 3	NE 1	8	9	9	1.5
14	63.0	61.6	61.6	24.0	26.2	25.6	29.2	20.4	21.2	23.0	22.0	96	91	90	ENE 2	ENE 2	NE 1	8	8	8	42.0
15	62.3	61.6	61.6	25.2	25.6	25.2	27.6	23.8	22.0	<b>21.8</b>	21.6	93	90	91	ENE 1	ENE 1	ESE 1	8	9	8	12.0
16	61.8	<b>61.1</b>	61.6	<b>27.4</b>	29.0	26.2	28.4	23.6	22.7	24.0	23.4	84	80	93	ENE 2	NE 2	NE 2	6	7	8	10.5
17	62.8	62.2	62.3	24.6	27.0	25.2	29.2	24.0	20.8	23.5	22.0	94	89	93	ENE 1	NE 2	ENE 1	<b>10</b>	9	<b>10</b>	16.0
18	62.0	61.3	60.4	24.4	28.2	26.6	27.2	23.8	21.4	23.4	21.6	94	82	83	ENE 1	NE 4	NE 2	8	8	9	8.5
19	62.5	61.3	60.4	24.6	28.8	27.0	28.6	<b>20.2</b>	21.4	23.9	22.5	93	81	85	E 2	NE 2	NE 2	7	8	8	9.5
20	62.8	62.3	61.6	24.4	26.6	25.6	29.6	24.2	21.9	22.8	22.2	<b>97</b>	88	91	ENE 1	ENE 2	NE 2	<b>10</b>	9	<b>10</b>	37.0
21	62.1	61.5	61.5	26.0	29.0	26.8	26.8	23.4	21.9	24.4	<b>23.7</b>	88	82	90	ENE 1	NE 2	ENE 2	<b>4</b>	7	8	6.5
22	62.2	61.3	61.5	26.6	28.0	25.9	29.4	<b>25.6</b>	23.2	24.4	23.6	89	87	95	NE 1	NE 2	NE 1	9	7	8	0.6
23	61.6	61.2	61.3	25.4	29.6	<b>27.6</b>	28.2	24.2	21.9	23.8	22.6	91	77	<b>82</b>	ENE 1	ENE 2	ENE 1	6	5	<b>7</b>	9.2
24	61.6	61.5	60.6	25.0	27.0	25.8	29.8	24.2	21.8	25.0	22.1	93	<b>94</b>	90	ENE 1	NE 2	NE 1	<b>10</b>	8	9	12.0
25	62.6	<b>62.7</b>	61.6	24.6	25.8	25.6	27.8	24.0	21.6	23.0	22.2	94	93	91	ENE 1	ENE 2	NE 2	8	8	9	8.5
26	<b>63.8</b>	62.2	<b>62.7</b>	25.4	27.0	25.6	29.4	23.6	21.5	23.5	23.4	90	89	<b>96</b>	ENE 1	NE 2	ENE 1	7	9	8	11.5
27	62.5	61.6	61.6	<b>23.2</b>	25.6	24.1	28.4	23.0	<b>19.8</b>	<b>21.8</b>	<b>19.8</b>	94	90	89	ENE 1	NE 2	ENE 1	<b>10</b>	9	8	22.5
28	62.0	61.5	61.6	24.2	27.0	<b>24.0</b>	<b>26.0</b>	22.6	21.1	23.5	21.0	94	89	95	NNE 1	NE 2	NE 1	9	9	<b>10</b>	4.5
29	63.0	61.5	61.0	24.4	28.2	25.2	29.2	23.5	21.4	24.5	21.6	94	86	91	NNE 1	NE 2	NE 1	9	8	<b>10</b>	30.5
30	62.8	62.1	62.2	23.5	30.0	24.6	29.6	22.8	20.3	24.0	21.6	94	76	94	E 1	SW 2	ENE 1	9	7	<b>10</b>	34.5
31	62.5	61.8	61.6	23.8	<b>25.0</b>	24.8	30.8	22.0	20.6	22.2	21.7	94	<b>94</b>	93	E 1	E 2	NE 2	9	<b>10</b>	8	<b>46.0</b>
Som	1936.6	1912.3	1905.3	783.3	875.6	809.5	905.2	720.9	674.5	735.3	695.2	2825	2589	2767	38	65	46	242	228	257	401.3
Gem.	62.4	61.7	61.5	25.3	25.0	26.1	29.2	23.3	21.8	23.7	22.4	91	83	89	1	2	1	8	7	8	12



## Weerkundige waarnemingen gedaan te Paramaribo in de maand Juni 1912.

DATUM.	LUCHTDRUKKING in mM. herleid op 0° C.			TEMPERATUUR. ° C.					DAMPDRUKKING in mM.			BETREKKELIJKE VOCHTIGHEID %.			WINDRICHTING EN KRACHT. Beaufort (0—12).			BEWOLKING (0—10)			Neerslag in mM. afgetapt.
	8 a.	2 p.	6 p.	8 a.	2 p.	6 p.	Max.	Min.	8 a.	2 p.	6 p.	8 a.	2 p.	6 p.	8 a.	2 p.	6 p.	8 a.	2 p.	6 p.	
	1	762.5	761.5	761.5	24.6	27.0	25.6	29.2	23.2	20.9	<b>25.0</b>	22.8	91	<b>94</b>	93	ESE 2	NE 2	NE 1	4	8	
2	62.3	61.7	61.8	25.2	27.0	25.2	28.4	23.6	22.2	24.6	21.4	93	93	90	E 2	E 2	E 1	6	<b>10</b>	<b>10</b>	12.5
3	62.5	62.2	62.2	24.0	28.2	26.6	30.0	23.0	21.2	23.6	22.8	<b>96</b>	83	88	ESE 1	N 1	NNE 2	<b>9</b>	8	8	11.5
4	62.8	62.2	62.3	24.2	28.4	24.6	28.4	23.8	21.5	23.7	22.0	<b>96</b>	82	96	E 1	NE 2	NE 2	<b>9</b>	8	<b>10</b>	9.5
5	62.5	<b>61.0</b>	<b>61.3</b>	25.6	29.0	27.0	28.8	23.2	22.2	24.2	23.5	91	81	89	ENE 1	NE 2	NE 2	7	7	8	16.5
6	62.3	61.1	61.4	25.8	30.0	25.8	29.2	23.6	21.7	24.5	23.2	88	78	94	E 1	NE 2	ENE 1	4	8	9	0.4
7	62.3	61.3	61.5	24.8	28.0	25.2	30.6	<b>24.2</b>	21.9	<b>25.0</b>	22.4	94	89	94	NE 1	ENE 1	ENE 2	<b>9</b>	8	<b>10</b>	7.0
8	62.8	62.0	62.2	24.2	29.0	26.6	28.4	23.0	21.3	23.3	23.8	95	78	92	ENE 1	NE 2	NE 2	<b>9</b>	8	8	7.5
9	62.5	62.2	61.6	24.8	25.2	24.6	29.4	23.8	21.5	22.0	21.6	92	93	94	ENE 1	ENE 1	NE 1	8	9	8	1.0
10	62.5	61.3	61.6	25.4	30.0	<b>27.8</b>	28.2	23.4	21.5	24.2	25.2	90	77	90	ESE 2	ENE 2	NE 2	4	6	<b>7</b>	21.5
11	63.3	61.7	62.2	24.6	31.0	27.2	30.8	23.0	21.0	23.8	24.5	92	71	91	ENE 1	NE 2	NE 2	4	6	7	<b>0.2</b>
12	63.0	62.0	62.2	25.2	29.0	26.4	31.2	22.8	21.6	24.6	21.9	91	83	85	NE 1	ENE 2	ENE 2	4	8	8	1.5
13	62.8	61.8	62.1	26.2	29.2	27.0	29.8	23.4	21.8	24.1	23.5	<b>86</b>	80	89	E 1	NNE 2	NE 2	<b>2</b>	8	8	4.0
14	63.0	62.1	62.1	24.2	29.4	27.3	29.2	22.8	20.7	23.1	22.7	92	76	<b>84</b>	SE 1	NE 3	ENE 1	8	6	8	15.0
15	62.8	62.1	62.3	24.8	27.0	25.4	29.4	22.8	21.7	22.9	21.9	93	86	91	ENE 1	NE 3	NE 2	6	<b>10</b>	8	4.6
16	63.3	62.0	61.7	25.6	31.0	27.1	<b>27.4</b>	22.4	22.2	23.4	23.3	91	<b>70</b>	87	ENE 1	NE 3	N 2	7	6	9	<b>56.5</b>
17	62.8	62.0	62.3	26.2	<b>31.2</b>	25.2	31.2	23.8	<b>23.0</b>	23.7	21.6	91	<b>70</b>	91	S 3	S 1	NE 2	4	6	8	—
18	63.3	61.7	<b>61.3</b>	26.0	30.2	27.2	31.8	23.2	21.9	23.9	<b>25.3</b>	88	75	94	ENE 3	NNE 2	ENE 2	4	8	8	1.5
19	63.1	62.1	62.2	26.2	<b>31.2</b>	27.0	30.8	23.2	21.8	23.7	24.6	<b>86</b>	<b>70</b>	93	ENE 3	ENE 2	ENE 2	<b>2</b>	7	8	4.0
20	64.3	62.8	63.0	25.8	<b>31.2</b>	25.8	31.6	23.2	22.5	23.5	22.7	91	<b>70</b>	92	ESE 2	E 1	ENE 2	<b>2</b>	<b>4</b>	8	—
21	<b>64.5</b>	62.8	<b>63.3</b>	24.4	30.0	23.8	<b>32.0</b>	22.6	20.2	23.8	21.0	89	76	96	ENE 1	NE 2	NE 2	6	6	8	3.7
22	<b>64.5</b>	62.8	62.5	25.4	30.0	25.2	30.2	22.4	21.5	24.0	22.4	90	76	94	ENE 1	NE 2	NE 1	6	9	8	35.0
23	<b>64.5</b>	<b>63.0</b>	62.2	25.0	29.0	26.2	30.2	22.0	21.0	24.2	23.0	89	81	91	ENE 1	NE 2	NE 2	3	7	8	39.5
24	63.0	62.3	61.6	23.8	29.2	27.0	29.4	22.0	21.0	24.3	22.5	<b>96</b>	81	85	ENE 1	N 2	NE 1	<b>9</b>	6	8	—
25	63.5	62.1	61.4	26.0	29.4	26.6	30.2	23.2	21.9	23.9	23.4	88	79	90	NE 1	NE 3	NE 2	7	6	8	8.0
26	62.5	61.3	61.6	23.4	29.0	24.2	29.8	22.2	20.5	23.3	21.7	<b>96</b>	78	<b>97</b>	ENE 1	NNE 3	ENE 1	8	6	<b>10</b>	3.0
27	62.8	61.2	61.5	<b>26.4</b>	29.0	26.6	29.0	23.0	22.9	24.2	23.2	89	81	89	ENE 1	NE 2	NE 1	<b>2</b>	8	9	14.0
28	62.0	61.8	61.7	24.8	<b>22.0</b>	<b>22.2</b>	30.6	22.2	21.9	<b>18.7</b>	<b>18.6</b>	94	96	94	ENE 1	E 2	ESE 1	4	<b>10</b>	<b>10</b>	4.0
29	<b>61.3</b>	61.2	61.5	<b>22.2</b>	29.0	26.2	28.6	<b>20.0</b>	<b>18.6</b>	24.8	21.8	94	83	86	E 2	NE 2	NE 2	4	8	<b>10</b>	12.5
30	61.7	<b>61.0</b>	61.5	25.6	29.8	27.2	29.2	22.2	21.4	24.3	24.0	88	78	90	S 2	NNE 3	NE 2	3	8	8	8.5
Som	1887.0	1856.3	1857.0	750.4	868.6	779.8	893.0	687.2	645.0	712.3	682.3	2740	2402	2729	42	61	50	164	223	253	325.4
Gem.	62.9	61.9	61.9	25.0	29.0	25.9	29.7	22.9	21.5	23.7	22.7	91	80	91	1	2	2	5	7	8	10.8

## Weerkundige waarnemingen gedaan te Paramaribo in de maand Juli 1912.

DATUM.	LUCHTDRUKKING in mM. herleid op 0° C.			TEMPERATUUR. ° C.					DAMPDRUKKING in mM.			BETREKKELIJKE VOCHTIGHEID %.			WINDRICHTING EN KRACHT. Beaufort (0—12).			BEWOLKING (0—10)			Neerslag mM. afgetapt.	
	8 a.	2 p.	6 p.	8 a.	2 p.	6 p.	Max.	Min.	8 a.	2 p.	6 p.	8 a.	2 p.	6 p.	8 a.	2 p.	6 p.	8 a.	2 p.	6 p.		8 a.
	1	761.7	761.3	761.4	23.4	28.0	25.8	30.4	22.0	20.3	24.0	23.2	95	85	94	NE 1	NE 2	S 1	7	8		8
2	63.3	62.1	61.9	24.6	29.4	<b>27.8</b>	<b>28.8</b>	<b>21.8</b>	22.4	24.6	23.7	<b>97</b>	81	85	S 1	NE 2	NE 1	2	8	8	3.0	
3	62.8	62.0	<b>61.3</b>	26.2	30.4	26.8	29.8	22.0	21.8	24.0	23.0	86	74	88	ESE 2	NE 3	NE 3	4	8	8	<b>0.5</b>	
4	62.5	62.2	61.5	24.2	<b>25.6</b>	25.8	31.4	22.8	21.1	23.0	22.1	94	94	90	NE 1	NNE 3	NNE 1	3	<b>10</b>	8	2.0	
5	62.3	61.8	62.0	25.4	29.8	26.2	29.0	<b>23.8</b>	21.9	23.7	22.6	91	76	90	E 2	S 2	NE 1	2	6	8	2.5	
6	63.1	61.8	62.0	25.8	28.8	26.4	31.2	23.2	22.9	24.3	22.9	93	83	89	E 2	NE 2	ENE 2	3	8	8	6.0	
7	62.8	61.8	61.6	24.6	29.0	24.1	29.4	22.6	21.6	24.6	21.2	94	83	95	ENE 1	NE 2	ENE 1	8	8	<b>10</b>	10.5	
8	63.3	61.6	61.7	24.2	28.4	26.2	30.2	22.2	21.1	24.1	23.0	94	84	91	NNE 1	NNE 2	NNE 1	7	8	8	8.0	
9	63.5	62.0	62.1	26.0	29.0	26.8	30.2	22.4	21.9	24.2	23.0	88	81	88	NE 1	NE 2	NE 1	3	8	8	7.2	
10	63.3	62.1	62.3	24.0	28.2	<b>24.0</b>	29.8	22.8	<b>19.9</b>	24.3	20.8	90	85	94	E 1	NE 2	NE 1	4	8	8	7.5	
11	62.8	61.3	61.5	24.5	29.2	24.6	29.8	22.7	22.1	24.1	21.8	<b>97</b>	80	95	NE 1	ENE 2	ESE 1	6	6	8	10.0	
12	62.8	61.3	61.5	25.2	27.2	26.8	30.0	23.2	21.6	<b>24.7</b>	22.6	91	92	86	SW 1	S 1	ENE 1	8	8	8	3.0	
13	62.8	62.1	61.5	<b>26.4</b>	26.2	24.8	30.6	23.0	21.3	24.0	21.5	<b>83</b>	95	92	ENE 2	S 2	NE 1	4	8	8	5.8	
14	61.7	61.2	61.6	25.2	28.0	25.6	30.2	22.4	22.4	24.4	23.4	94	87	96	ENE 1	NE 1	NE 1	6	8	<b>10</b>	4.0	
15	<b>61.6</b>	<b>61.0</b>	61.6	24.8	30.6	25.6	29.2	<b>23.8</b>	21.9	23.4	22.6	94	72	93	ENE 1	NE 2	NE 2	8	7	8	19.0	
16	<b>61.6</b>	61.1	61.5	24.8	29.6	26.1	31.2	<b>23.8</b>	21.7	23.0	22.3	93	75	89	ENE 1	NE 2	ENE 2	7	8	8	11.0	
17	62.9	61.1	<b>61.3</b>	25.8	29.6	27.0	30.0	22.8	22.5	23.8	<b>23.9</b>	91	77	90	ENE 1	NE 2	NE 1	4	8	8	4.5	
18	63.0	61.8	61.7	24.6	<b>31.5</b>	26.3	30.5	22.8	21.2	22.4	22.9	92	<b>65</b>	90	ENE 1	SW 1	ENE 1	8	6	8	2.5	
19	63.1	62.3	62.1	25.8	29.3	25.1	<b>31.5</b>	23.2	21.1	21.1	22.1	85	69	93	E 1	ENE 4	SW 1	6	8	8	0.6	
20	<b>63.8</b>	<b>62.8</b>	<b>62.4</b>	24.8	28.8	26.2	29.8	22.8	21.7	<b>20.6</b>	<b>20.0</b>	93	69	79	ENE 1	NE 2	E 1	8	8	7	5.3	
21	63.5	62.4	61.8	25.5	28.2	26.6	29.2	21.9	21.5	21.8	22.0	89	77	85	ENE 1	NE 3	NE 1	3	9	<b>6</b>	0.9	
22	63.3	<b>62.8</b>	62.1	26.2	27.2	27.0	30.0	<b>21.8</b>	22.6	22.2	22.1	90	83	83	ENE 1	SW 1	NE 1	2	6	8	9.5	
23	63.1	62.0	61.5	25.0	26.0	24.9	30.0	23.0	21.6	20.8	21.2	92	83	91	ENE 1	NE 2	ENE 1	6	6	8	3.0	
24	63.1	61.9	61.4	25.4	31.0	25.2	<b>28.8</b>	22.6	21.9	23.4	21.6	91	70	91	ENE 1	E 2	ENE 1	2	6	8	1.6	
25	62.6	61.8	61.4	26.2	29.2	26.8	32.0	23.2	22.0	24.5	23.5	87	81	90	E 1	N 2	ENE 1	2	4	7	2.9	
26	62.3	61.9	62.1	<b>23.8</b>	29.4	25.6	30.2	22.6	20.8	23.1	22.2	95	76	91	E 1	N 2	ENE 1	6	8	8	<b>38.0</b>	
27	62.7	61.8	61.3	25.0	30.0	27.6	29.8	23.0	20.4	24.5	20.9	87	78	<b>77</b>	E 2	ENE 2	ENE 2	4	6	8	12.0	
28	63.1	61.8	61.7	26.2	28.0	27.3	31.2	22.4	21.8	23.7	22.1	86	85	82	ENE 2	E 2	ENE 2	2	8	<b>6</b>	10.0	
29	62.3	61.5	62.0	25.1	29.3	25.1	29.9	23.3	21.5	24.0	23.1	91	79	<b>97</b>	NE 1	SW 1	W 1	8	6	<b>6</b>	—	
30	63.4	62.0	62.0	25.8	30.6	24.3	29.8	22.0	<b>23.2</b>	23.4	21.4	94	72	95	S 1	ENE 2	E 1	4	6	8	2.6	
31	62.6	61.8	61.8	25.0	29.0	25.0	31.6	22.0	21.2	23.8	21.2	90	80	90	E 1	ENE 2	E 1	4	6	8	10.1	
Som	1946.7	1916.3	1913.7	779.6	894.5	783.4	935.7	683.9	650.8	707.5	689.9	2817	2501	2779	37	63	38	151	226	244	220.5	
Gem.	62.8	61.8	61.7	25.2	28.9	25.2	30.2	22.1	20.9	22.8	22.3	91	81	90	1	2	1	5	7	7	7.1	

## Weerkundige waarnemingen gedaan te Paramaribo in de maand Augustus 1912.

DATUM.	LUCHTDRIUKING in mM. herleid op 0° C.			TEMPERATUUR. ° C.					DAMPDRUKKING in mM.			BETREKKELIJKE VOCHTIGHEID %.			WINDRICHTING EN KRACHT. Beaufort (0—12).			BEWOLKING (0—10)			Neerslag mM. afgetapt.	
	8 a.	2 p.	6 p.	8 a.	2 p.	6 p.	Max.	Min.	8 a.	2 p.	6 p.	8 a.	2 p.	6 p.	8 a.	2 p.	6 p.	8 a.	2 p.	6 p.		8 a.
	1	<b>763.8</b>	762.1	762.1	23.3	29.0	27.0	30.0	22.3	20.3	22.5	22.7	96	76	86	ENE 1	NNE 2	N 1	8	6		6
2	62.4	62.1	62.1	24.1	<b>25.8</b>	26.0	29.6	23.1	21.7	22.7	20.8	<b>97</b>	92	83	NE 1	NE 1	NNE 1	8	8	6	2.1	
3	62.7	62.0	61.8	24.0	31.0	26.0	28.8	22.2	20.1	23.8	<b>19.4</b>	91	71	<b>78</b>	NE 1	S 2	W 1	6	6	8	0.4	
4	62.5	61.9	61.9	24.0	31.0	27.8	31.0	23.0	19.9	23.6	24.3	90	71	87	SW 1	NNE 2	E 3	4	7	4	<b>56.0</b>	
5	63.5	<b>63.0</b>	<b>62.6</b>	26.3	30.0	26.9	<b>32.8</b>	24.1	22.3	24.5	22.2	88	78	84	E 2	E 3	NE 2	4	4	6	<b>0.1</b>	
6	62.5	61.8	61.8	25.0	30.0	28.0	31.0	23.2	21.2	24.0	22.1	90	76	79	E 2	N 2	ENE 1	4	6	8	9.5	
7	62.1	62.1	61.8	25.0	26.0	24.6	31.2	22.8	<b>23.0</b>	<b>21.3</b>	20.9	<b>97</b>	85	91	ENE 1	W 1	NE 1	8	6	<b>10</b>	—	
8	62.8	62.1	61.3	24.2	29.0	27.4	<b>28.0</b>	<b>21.4</b>	21.1	22.9	23.3	94	77	86	NNE 1	N 2	NNE 1	4	6	8	38.0	
9	62.3	61.2	<b>61.2</b>	<b>26.6</b>	29.8	28.0	29.6	23.8	22.4	24.1	22.7	86	77	81	ENE 2	NE 1	ENE 1	2	8	8	—	
10	62.1	62.8	<b>61.2</b>	26.0	29.2	26.6	32.0	23.0	21.7	24.9	22.8	87	83	88	E 1	NE 1	ENE 1	2	<b>10</b>	7	—	
11	<b>61.5</b>	60.9	<b>61.2</b>	25.4	30.8	27.2	31.6	22.2	21.1	23.5	24.7	88	71	92	ENE 1	NE 2	S 1	6	7	8	<b>0.1</b>	
12	62.3	62.2	62.0	25.0	29.3	24.3	31.1	23.2	21.0	24.0	21.4	89	79	<b>95</b>	S 1	E 2	ENE 1	8	6	8	—	
13	62.3	61.9	61.4	25.2	29.0	25.0	30.8	23.2	21.2	25.0	21.8	89	84	93	E 1	NNE 1	SSE 1	8	8	8	3.0	
14	62.0	61.6	61.3	24.6	29.8	28.0	30.2	22.0	21.2	24.3	24.0	92	78	85	ESE 1	N 2	ENE 1	7	4	7	10.5	
15	62.0	61.6	61.4	25.0	29.0	26.0	30.4	22.2	21.4	24.8	22.3	91	83	90	NNE 1	ENE 2	NE 1	4	6	8	—	
16	61.8	61.0	61.4	25.6	30.0	26.4	30.6	24.2	23.0	24.0	23.7	94	76	93	ENE 1	NE 2	ENE 1	7	6	8	—	
17	62.6	62.0	61.3	25.4	<b>25.8</b>	27.4	30.6	23.0	21.9	22.9	23.1	91	<b>93</b>	85	ESE 2	E 1	ENE 3	4	8	6	9.0	
18	63.3	62.0	61.7	25.4	31.0	28.0	31.4	23.2	21.1	23.4	24.8	88	70	88	ESE 2	NE 2	ENE 2	2	6	6	8.5	
19	62.3	62.8	61.6	25.0	29.0	27.6	31.4	22.0	21.2	23.8	22.6	90	80	82	ENE 1	N 1	NNE 2	4	8	4	—	
20	62.3	61.0	61.4	26.2	29.2	25.6	31.2	22.4	21.8	23.6	23.0	86	78	94	ENE 1	NE 2	NE 1	2	8	8	—	
21	62.5	61.3	61.4	25.8	30.0	26.2	31.0	22.0	21.7	24.5	23.4	88	78	93	NE 1	N 2	SE 1	3	6	8	2.8	
22	62.3	61.8	<b>61.2</b>	25.4	31.0	26.4	31.6	22.2	21.7	23.8	22.9	90	71	89	SE 1	NE 2	NE 2	3	6	8	7.5	
23	63.1	61.5	61.3	26.2	30.6	28.0	31.6	22.6	22.2	23.8	<b>25.0</b>	88	73	89	NE 1	NE 3	ENE 1	2	6	7	—	
24	62.3	61.9	61.7	25.8	28.0	26.8	31.0	22.8	22.1	25.3	21.8	90	90	83	ESE 1	NE 1	NNE 2	2	<b>10</b>	8	1.0	
25	61.8	61.1	61.3	24.4	29.8	27.2	31.2	23.0	21.5	23.7	24.5	95	76	91	NE 1	NE 2	ENE 1	8	9	8	10.0	
26	62.1	61.5	61.3	25.0	<b>32.0</b>	27.0	31.0	22.4	<b>19.5</b>	24.1	23.9	83	<b>68</b>	90	E 2	NNE 1	NE 2	6	4	8	31.5	
27	62.3	61.3	<b>61.2</b>	25.4	30.0	27.2	32.2	24.2	22.7	24.5	23.6	94	78	88	ENE 2	E 3	NE 2	8	8	8	—	
28	62.8	61.5	61.5	25.4	31.3	26.8	32.3	22.8	21.2	23.6	23.9	88	70	91	SE 1	ENE 1	NE 2	3	8	8	1.5	
29	62.1	61.9	61.4	25.2	28.2	<b>24.0</b>	31.6	<b>24.6</b>	22.0	<b>25.5</b>	20.8	93	90	94	SSW 1	N 1	NE 2	9	<b>10</b>	<b>10</b>	5.5	
30	62.0	61.2	61.3	23.2	29.0	27.0	30.6	22.2	20.2	23.1	22.5	96	73	85	NN 1	NE 2	NE 1	7	8	8	22.0	
31	62.3	<b>60.8</b>	<b>61.2</b>	26.0	31.4	<b>28.2</b>	29.8	23.4	20.6	23.3	24.3	<b>82</b>	<b>68</b>	85	E 1	NE 2	ENE 2	4	8	7	3.0	
Som	1934.7	1913.9	1907.3	759.1	915.0	828.6	957.2	708.7	663.9	738.8	719.2	2801	2373	2718	38	57	45	157	214	230	270.3	
Gem.	62.7	61.7	61.6	24.5	29.5	26.7	30.9	22.8	21.4	23.8	23.2	90	77	88	1	2	1	5	7	7	8.7	

## Weerkundige waarnemingen gedaan te Paramaribo in de maand September 1912.

DATUM.	LUCHTDRIKKING in mM. herleid op 0° C.			TEMPERATUUR. ° C.					DAMPDRUKKING in mM.			BETREKKELIJKE VOCHTIGHEID %.			WINDRICHTING EN KRACHT. Beaufort (0—12).			BEWOLKING (0—10)			Neerslag mM. afgetapt.
	8 a.	2 p.	6 p.	8 a.	2 p.	6 p.	Max.	Min.	8 a.	2 p.	6 p.	8 a.	2 p.	6 p.	8 a.	2 p.	6 p.	8 a.			
	1	762.6	761.6	761.3	25.4	31.4	27.6	31.8	23.8	21.9	23.6	23.0	91	69	84	ENE 2	NE 2	ENE 1	8	6	
2	62.3	62.0	61.5	25.2	<b>26.4</b>	26.7	31.8	23.4	22.0	22.9	21.5	<b>93</b>	<b>89</b>	83	ENE 1	ENE 1	NE 1	8	8	8	<b>0.3</b>
3	62.3	62.6	60.3	25.8	28.2	27.4	30.8	23.6	22.5	24.7	23.1	91	87	85	SE 1	E 1	NE 1	8	8	8	3.5
4	62.6	61.8	61.2	25.4	31.0	28.4	<b>29.0</b>	24.2	21.1	23.8	<b>25.4</b>	88	71	88	E 3	E 1	NE 1	7	4	6	—
5	63.1	62.0	61.5	26.2	32.0	28.1	31.8	23.8	21.8	23.8	23.5	86	67	83	ESE 1	SE 1	NE 1	4	4	8	—
6	63.1	62.3	61.8	25.2	31.2	28.2	32.8	<b>24.8</b>	21.4	24.6	22.8	90	73	80	ENE 1	ENE 1	NE 1	6	8	8	—
7	62.1	61.3	61.3	25.4	32.0	27.4	32.0	23.8	21.9	<b>25.0</b>	23.1	91	70	85	ENE 1	E 1	NE 2	4	4	8	—
8	63.1	61.5	61.1	26.0	31.0	28.4	32.2	23.2	21.1	23.6	24.8	85	71	86	ESE 2	NE 2	NE 2	4	6	8	—
9	62.6	61.8	61.3	26.0	29.3	27.4	32.3	24.0	21.5	24.9	22.3	86	82	82	ENE 2	E 1	NE 1	4	<b>10</b>	8	<b>7.5</b>
10	62.5	61.6	61.3	26.6	30.4	27.4	31.0	22.2	22.8	23.8	23.1	88	73	85	ENE 1	SE 1	NNE 1	2	6	8	2.5
11	62.0	61.1	61.3	26.2	31.8	27.4	30.8	22.2	21.8	<b>21.8</b>	22.3	86	62	82	NE 1	NNE 1	NE 1	3	4	8	—
12	62.0	61.6	61.3	27.2	30.4	28.2	32.0	24.2	22.4	24.2	23.4	83	75	82	E 2	N 1	NE 2	2	4	8	—
13	62.0	61.5	61.3	25.8	32.2	27.6	32.0	24.8	22.5	23.7	21.7	91	66	80	ESE 1	E 1	ENE 2	8	8	8	1.2
14	62.6	61.5	61.5	26.8	31.2	27.2	32.2	23.8	22.6	23.7	22.4	86	66	83	ENE 2	NE 3	ENE 2	6	8	8	1.2
15	62.2	61.0	61.3	26.2	30.6	27.4	32.4	24.4	22.6	23.4	24.3	90	72	90	ENE 1	NE 2	NE 1	8	6	8	—
16	61.8	61.3	61.2	25.4	31.4	28.0	31.2	22.8	22.3	23.1	24.8	<b>93</b>	68	88	E 1	ENE 2	NE 1	7	4	6	—
17	61.8	61.5	61.3	26.2	29.8	27.8	32.0	23.4	22.0	24.3	24.1	87	78	87	ENE 2	NE 2	NE 2	3	4	8	—
18	62.3	61.8	61.4	25.4	31.9	<b>26.4</b>	31.3	22.8	21.9	22.8	22.9	91	65	89	ENE 2	S 1	ENE 1	2	4	8	—
19	<b>63.2</b>	<b>62.7</b>	<b>62.2</b>	<b>27.3</b>	31.2	27.6	32.0	23.1	21.5	24.3	24.2	90	72	88	E 1	NNE 2	NE 2	4	6	8	—
20	61.8	61.3	61.7	26.4	30.8	27.9	32.0	<b>22.0</b>	<b>22.9</b>	23.5	<b>21.2</b>	89	71	<b>76</b>	ENE 1	N 1	NNE 1	4	6	6	—
21	62.5	61.6	62.0	<b>24.3</b>	32.4	26.6	32.2	22.1	<b>19.5</b>	22.5	22.8	87	62	88	NNE 1	NE 1	NNE 1	4	<b>3</b>	8	—
22	<b>61.4</b>	<b>60.5</b>	<b>60.1</b>	27.0	32.8	<b>29.4</b>	33.2	24.0	22.5	24.9	24.8	85	68	81	E 3	NE 1	NE 2	3	4	7	—
23	62.3	60.9	61.0	26.0	32.8	28.0	33.2	23.4	20.9	22.3	23.1	84	<b>60</b>	82	ESE 2	SE 1	NNE 1	2	4	7	—
24	63.0	62.2	61.1	24.8	32.6	28.6	33.0	23.0	21.7	23.2	23.6	<b>93</b>	64	81	ENE 1	NNE 2	NE 1	7	4	7	—
25	62.1	61.2	61.2	27.0	32.2	28.4	33.0	23.0	21.9	22.6	24.6	83	64	85	ENE 1	NNE 2	NNE 1	3	4	8	—
26	62.1	61.4	61.2	26.2	32.6	28.6	33.0	23.0	21.2	24.6	25.1	84	67	86	E 1	ENE 1	NNE 1	4	4	8	—
27	62.3	61.5	61.5	26.0	<b>33.0</b>	28.4	33.2	23.4	20.8	23.9	23.7	83	64	82	ENE 2	ENE 1	NNE 1	4	6	7	—
28	62.1	61.6	61.8	27.0	31.4	28.2	<b>33.4</b>	22.4	19.8	23.1	25.1	<b>75</b>	68	88	NNE 1	N 2	NNE 1	3	<b>3</b>	<b>4</b>	—
29	62.1	61.6	61.3	26.2	29.6	27.6	31.4	23.8	22.6	24.2	24.9	90	79	<b>90</b>	NNE 2	NNE 1	NE 1	4	5	8	—
30	62.6	61.6	61.2	25.4	32.0	28.4	32.4	23.2	21.9	23.8	23.7	91	67	82	ENE 2	NNE 2	NE 2	4	6	8	4.0
Som	1870.5	1847.9	1839.5	780.0	934.6	834.7	961.8	701.6	653.3	710.6	705.3	2630	2110	2531	46	41	39	140	161	226	20.2
Gem.	62.2	61.6	61.3	26.0	31.1	27.8	32.0	23.3	21.8	23.7	23.5	88	73	84	2	2	1	5	5	8	0.7

## Weerkundige waarnemingen gedaan te Paramaribo in de maand October 1912.

DATUM.	LUCHTDRIKKING in mM. herleid op 0° C.			TEMPERATUUR. ° C.					DAMPDRUKKING in mM.			BETREKKELIJKE VOCHTIGHEID %.			WINDRICHTING EN KRACHT. Beaufort (0—12).			BEWOLKING (0—10)			Neerslag mM. afgetapt.
	8 a.	2 p.	6 p.	8 a.	2 p.	6 p.	Max.	Min.	8 a.	2 p.	6 p.	8 a.	2 p.	6 p.	8 a.	2 p.	6 p.	8 a.	2 p.	6 p.	
	1	763.1	761.5	761.2	25.4	31.8	28.4	32.8	22.4	20.4	22.9	<b>25.2</b>	85	65	88	SE 2	S 1	ENE 1	4	4	
2	62.1	61.5	61.3	26.4	31.0	27.6	33.0	23.0	22.1	23.4	24.2	86	70	88	ENE 1	N 2	NE 1	4	3	8	—
3	61.8	61.0	60.1	26.2	31.8	27.0	32.2	<b>24.0</b>	21.4	24.0	23.7	85	68	90	S 2	SE 1	NE 2	4	4	8	—
4	62.4	61.5	61.3	25.0	31.8	27.4	32.0	23.0	21.0	22.9	23.7	89	65	87	ENE 2	NNE 2	NE 2	6	6	8	<b>0.4</b>
5	62.3	61.4	61.0	24.8	<b>32.3</b>	26.4	32.1	22.5	<b>20.0</b>	23.6	22.1	86	66	86	ENE 2	SSW 1	NE 2	2	3	8	—
6	62.6	61.0	61.3	26.4	30.8	26.6	<b>33.6</b>	22.0	22.1	23.1	23.6	86	70	91	ENE 1	NE 2	NE 2	4	8	8	—
7	62.1	61.1	61.5	26.0	32.0	28.0	31.6	23.8	21.1	22.8	24.4	85	64	87	ESE 3	E 1	ENE 2	4	4	8	1.8
8	63.0	61.8	61.3	26.4	30.0	27.0	33.0	23.4	21.9	24.0	23.7	85	76	90	ESE 2	NNE 1	NE 1	1	4	8	—
9	<b>63.3</b>	<b>62.0</b>	61.3	26.0	<b>26.3</b>	27.0	31.3	<b>21.0</b>	21.9	<b>22.4</b>	22.5	88	87	85	ENE 1	N 1	NE 1	4	8	8	2.0
10	62.5	61.4	61.3	26.0	30.8	25.2	31.4	21.4	21.9	23.9	21.6	88	72	91	NE 1	NNE 1	NE 2	4	8	8	3.0
11	62.3	61.9	61.9	26.6	29.3	27.3	32.1	22.2	21.6	24.4	<b>21.5</b>	<b>83</b>	80	<b>80</b>	ENE 1	E 1	ENE 1	3	6	<b>4</b>	<b>25.0</b>
12	61.7	61.2	60.1	26.0	30.0	27.3	31.2	21.4	21.3	23.8	22.3	85	76	83	ENE 1	N 1	ENE 2	4	6	8	1.0
13	62.4	60.8	61.2	26.4	32.2	28.2	31.8	22.4	21.7	23.5	24.7	85	66	87	ENE 1	NE 2	NE 2	2	4	7	3.0
14	62.2	61.6	<b>62.1</b>	26.4	28.0	<b>24.2</b>	32.6	23.8	<b>23.3</b>	<b>25.3</b>	<b>21.5</b>	91	<b>90</b>	<b>96</b>	E 3	NNE 1	SE 2	2	8	<b>10</b>	—
15	62.5	61.6	61.3	25.0	29.3	27.0	32.3	21.2	21.4	24.4	22.9	91	80	86	SE 1	E 2	ENE 1	4	8	8	10.5
16	61.8	60.8	61.4	26.6	31.8	27.1	32.2	22.2	22.8	23.3	23.7	88	67	89	ENE 2	NE 1	NE 1	2	6	8	—
17	61.6	61.1	<b>59.9</b>	26.2	30.8	28.2	32.0	23.2	<b>23.3</b>	23.9	24.3	91	72	85	E 2	NNE 1	NE 2	2	6	8	—
18	<b>60.9</b>	<b>60.2</b>	<b>59.9</b>	26.4	<b>32.3</b>	28.4	32.3	<b>24.0</b>	21.3	22.6	24.8	<b>83</b>	<b>63</b>	86	ENE 3	E 2	ENE 2	2	4	9	—
19	62.3	61.5	60.0	25.8	31.0	<b>29.2</b>	32.8	23.0	22.1	23.4	24.7	90	70	82	ENE 2	ENE 1	ENE 1	2	6	7	—
20	62.0	60.8	61.2	26.2	32.2	27.0	32.2	23.2	22.6	23.5	23.9	90	66	90	E 2	NE 2	NE 2	2	6	7	—
21	61.6	61.2	60.1	26.2	29.0	26.0	32.8	22.8	21.8	24.6	22.7	86	83	91	ENE 1	N 1	NE 1	2	8	9	—
22	61.6	61.1	61.1	26.0	29.8	27.4	31.2	22.4	21.5	24.1	22.3	86	77	82	ENE 1	NE 1	NE 1	2	8	8	11.0
23	61.6	61.0	60.0	26.2	31.3	27.6	32.1	23.0	21.8	23.6	22.1	86	70	80	E 2	N 2	ENE 2	2	6	9	<b>0.4</b>
24	61.8	61.0	60.1	26.2	31.0	26.2	32.2	21.8	21.4	23.6	23.4	85	71	93	ENE 2	NNE 1	NE 1	4	6	7	1.5
25	62.1	61.8	61.2	26.4	29.0	27.4	32.2	22.8	22.7	24.6	23.7	89	83	87	ENE 1	NE 1	NE 2	4	8	7	1.8
26	61.6	61.1	60.4	25.4	31.3	26.6	31.9	23.0	22.3	23.6	22.8	93	70	88	ENE 1	N 2	NE 2	8	6	8	10.0
27	61.5	60.8	60.0	<b>27.2</b>	32.0	28.4	32.0	23.8	22.8	23.8	25.0	85	67	87	ENE 3	NE 2	NE 2	4	6	8	—
28	62.0	61.6	61.9	26.0	31.0	28.3	32.8	23.4	21.9	23.6	25.0	88	71	88	ESE 1	E 1	ENE 1	6	4	8	—
29	62.5	61.2	61.3	25.4	31.3	27.4	32.3	22.2	20.4	23.6	24.3	85	70	90	ENE 1	S 1	NE 2	2	8	8	—
30	61.7	61.4	61.6	<b>24.6</b>	28.0	25.2	32.0	22.6	22.2	23.1	22.8	<b>97</b>	82	<b>96</b>	E 1	N 1	NE 2	9	4	<b>10</b>	21.5
31	61.7	61.2	61.5	25.2	30.0	27.3	<b>28.8</b>	22.8	20.5	24.0	<b>21.5</b>	86	76	<b>80</b>	ENE 2	NNE 1	ENE 1	6	6	7	4.0
Som	1924.6	1899.1	1889.8	805.2	949.2	842.3	994.8	703.7	674.5	733.0	724.6	2706	2253	2699	51	41	49	111	182	244	96.9
Gem.	62.8	61.3	61.0	26.0	30.6	27.2	32.1	22.7	21.8	23.6	23.4	87	73	87	2	1	2	4	6	8	3.1

## Weerkundige waarnemingen gedaan te Paramaribo in de maand November 1912.

DATUM.	LUCHTDRIKKING in mM. herleid op 0° C.			TEMPERATUUR. ° C.					DAMPDRUKKING in mM.			BETREKKELIJKE VOCHTIGHEID %.			WINDRICHTING EN KRACHT. Beaufort (0—12).			BEWOLKING (0—10)			Neerslag mM. afgetapt.
	8 a.	2 p.	6 p.	8 a.	2 p.	6 p.	Max.	Min.	8 a.	2 p.	6 p.	8 a.	2 p.	6 p.	8 a.	2 p.	6 p.	8 a.	2 p.	6 p.	
	1	761.9	761.3	761.5	25.6	31.3	27.2	31.5	21.6	21.2	24.3	23.6	87	71	88	E 2	ENE 1	NE 2	4	3	
2	62.2	61.2	61.3	25.2	32.0	27.4	32.2	23.0	20.5	23.8	24.6	86	67	90	E 2	ESE 1	NE 1	3	4	9	—
3	61.6	61.0	60.0	<b>26.6</b>	31.0	27.6	32.8	23.6	<b>22.8</b>	23.6	24.2	88	71	88	E 2	NE 2	NE 1	4	6	9	—
4	61.5	61.0	61.3	25.2	30.1	27.4	32.1	<b>24.0</b>	21.6	24.4	24.3	91	73	90	ENE 3	NNE 2	NE 1	6	4	<b>6</b>	—
5	61.9	61.0	60.0	25.8	32.0	27.8	31.0	22.8	21.5	23.8	24.3	87	67	87	E 1	E 2	ENE 1	4	<b>3</b>	<b>6</b>	—
6	<b>60.2</b>	<b>59.3</b>	<b>59.6</b>	26.2	<b>32.3</b>	27.4	32.3	23.8	20.6	20.5	<b>25.2</b>	82	<b>57</b>	93	ENE 3	NE 2	NE 1	<b>2</b>	<b>3</b>	<b>7</b>	—
7	62.1	61.0	60.0	25.0	31.8	28.2	<b>33.0</b>	22.0	<b>19.3</b>	21.8	25.1	82	62	88	S 1	ESE 2	NE 2	4	6	8	—
8	61.6	60.8	61.0	25.8	32.0	27.4	32.6	23.2	20.7	23.7	24.8	84	66	91	ESE 2	NNE 1	NE 1	<b>2</b>	4	7	—
9	61.6	61.1	61.4	25.8	31.2	27.4	32.0	23.8	22.7	<b>25.4</b>	21.5	82	75	<b>79</b>	E 3	N 2	NNE 2	8	4	6	—
10	<b>62.4</b>	61.3	61.6	26.4	31.8	26.8	31.8	22.4	21.7	23.3	23.9	85	67	91	ENE 1	NE 3	NE 4	<b>2</b>	6	8	0.6
11	62.2	61.3	61.3	26.0	31.8	26.2	32.2	23.4	21.9	24.0	21.0	88	68	83	ENE 3	NNE 2	ENE 3	6	6	9	—
12	62.0	61.6	61.5	<b>23.0</b>	29.0	26.6	32.2	22.8	20.3	22.5	23.2	<b>97</b>	76	89	NE 1	NNE 3	NE 1	<b>10</b>	4	9	16.0
13	61.5	61.6	60.3	24.0	<b>24.4</b>	24.2	30.0	23.0	21.2	20.5	21.1	96	<b>96</b>	94	ENE 1	NE 1	NE 1	<b>10</b>	<b>10</b>	9	2.5
14	61.5	61.3	60.3	24.6	25.4	25.0	<b>27.2</b>	22.5	21.2	21.7	22.2	92	90	94	ENE 1	N 1	NE 1	8	<b>10</b>	<b>10</b>	8.0
15	61.7	61.1	60.3	25.0	30.8	26.6	28.2	22.0	21.6	23.3	22.8	92	71	88	ENE 2	E 1	ENE 1	6	8	8	<b>30.5</b>
16	62.1	61.6	<b>62.6</b>	26.0	29.8	<b>28.4</b>	31.2	23.4	21.9	24.3	23.9	88	78	83	ENE 1	NE 1	NE 1	4	6	7	2.0
17	61.6	61.0	60.3	25.2	31.0	24.8	31.4	22.0	21.6	23.4	22.3	91	70	<b>96</b>	ENE 2	NE 2	NE 1	4	6	<b>10</b>	12.0
18	61.5	61.0	60.8	26.0	29.3	<b>24.0</b>	31.3	21.8	21.9	24.9	<b>19.7</b>	88	82	89	ENE 2	N 2	NNE 1	4	6	8	19.0
19	62.0	61.1	61.3	25.8	30.8	27.0	31.4	21.2	21.1	23.5	23.1	85	71	87	ENE 2	NNE 2	NE 2	<b>2</b>	8	8	12.0
20	62.3	<b>61.8</b>	61.3	25.4	30.3	27.6	31.1	23.0	22.3	22.7	23.0	93	70	84	E 2	NNE 2	ENE 2	3	4	8	1.0
21	61.8	61.2	60.6	26.2	29.0	26.4	30.8	23.0	21.8	23.6	22.9	86	79	89	ENE 1	NE 1	NE 1	7	6	8	2.0
22	61.6	61.2	<b>59.9</b>	26.2	29.2	27.2	30.0	23.4	21.8	24.3	24.7	<b>62</b>	81	92	ENE 1	NE 1	NE 1	3	6	8	2.5
23	61.6	61.6	60.3	26.2	26.0	26.2	31.2	23.8	22.6	23.1	23.0	90	93	91	ENE 2	NE 1	NE 1	4	8	9	4.0
24	61.6	61.0	60.6	24.6	30.6	26.2	30.8	23.2	21.6	23.4	23.0	94	72	91	ENE 1	NE 1	NE 1	8	6	9	13.5
25	61.6	61.2	61.6	25.2	30.4	24.8	31.0	23.0	21.6	22.7	21.1	91	70	91	ENE 1	E 1	ENE 1	7	8	9	0.8
26	61.7	61.3	60.4	25.4	29.6	24.1	31.0	21.8	22.3	<b>20.1</b>	20.8	93	65	93	ENE 2	N 1	S 1	4	7	9	6.5
27	60.5	60.3	60.4	24.6	27.4	24.1	36.0	<b>20.8</b>	21.8	21.5	21.3	95	79	<b>96</b>	S 1	N 1	NE 1	<b>2</b>	8	9	26.5
28	62.5	61.1	60.1	25.2	30.8	27.2	30.8	23.8	21.8	23.9	23.2	92	72	87	NE 1	NNE 2	NE 2	3	4	7	2.5
29	61.7	61.3	60.3	24.0	27.8	26.4	31.0	23.2	20.5	21.2	22.9	92	77	89	ENE 1	N 2	NE 1	8	8	9	<b>0.5</b>
30	61.7	61.5	60.3	23.8	27.4	26.2	29.2	22.8	20.6	21.5	22.0	94	79	87	ENE 1	N 1	NE 1	8	8	9	7.0
Som	1851.7	1834.1	1822.2	760.0	896.3	793.8	933.3	684.1	644.0	690.7	688.7	2653	2205	2668	49	47	41	144	180	246	169.4
Gem.	61.7	61.1	60.7	25.3	29.9	26.4	31.1	22.8	21.5	23.6	22.9	88	73	89	2	2	1	5	6	8	5.6

## Weerkundige waarnemingen gedaan te Paramaribo in de maand December 1912.

DATUM.	LUCHTDRIKKING in mM. herleid op 0° C.			TEMPERATUUR. ° C.					DAMPDRUKKING in mM.			BETREKKELIJKE VOCHTIGHEID %.			WINDRICHTING EN KRACHT. Beaufort (0—12).			BEWOLKING (0—10)			Neerslag mM. afgetapt.	
	8 a.	2 p.	6 p.	8 a.	2 p.	6 p.	Max.	Min.	8 a.	2 p.	6 p.	8 a.	2 p.	6 p.	8 a.	2 p.	6 p.	8 a.	2 p.	6 p.		8 a.
	1	761.7	759.9	760.3	25.2	29.6	26.6	29.0	22.2	19.7	24.2	23.2	83	79	89	S 1	NE 2	NNE 1	4	6		8
2	61.7	61.5	60.3	25.0	26.8	25.2	30.0	22.4	21.6	21.8	22.4	92	83	94	ENE 1	E 1	NE 1	7	8	9	0.5	
3	61.7	61.2	60.3	25.6	29.4	26.8	29.2	22.8	21.4	22.5	22.6	88	74	86	ENE 1	E 3	NE 1	4	8	8	5.0	
4	61.7	61.5	60.3	26.0	26.8	27.0	29.6	22.4	22.3	21.8	22.9	90	83	86	NE 1	N 1	NE 1	4	8	9	3.5	
5	60.5	60.1	60.1	25.2	29.0	27.0	29.6	23.0	22.0	24.6	22.9	93	83	86	ENE 1	NNE 1	N 1	2	6	8	1.8	
6	60.5	60.3	60.3	25.0	27.4	26.6	30.4	22.2	21.4	24.6	22.8	91	90	88	ENE 1	S 1	NE 2	6	8	8	—	
7	60.8	60.0	60.4	25.6	28.8	25.6	29.4	22.6	21.8	22.6	22.2	90	77	91	ENE 1	NE 2	NE 1	2	6	10	7.0	
8	60.7	59.9	60.3	25.4	29.8	26.6	29.0	23.6	21.5	24.3	22.8	90	78	88	SE 2	NE 2	ENE 1	7	4	8	0.8	
9	61.6	61.1	60.1	25.6	29.8	27.2	30.0	23.0	20.6	24.6	22.8	85	79	85	S 1	N 2	NE 1	4	8	8	3.8	
10	62.0	61.7	62.0	26.0	26.0	25.3	31.0	23.0	21.3	22.3	20.8	85	90	87	NE 1	ENE 1	NNE 1	4	8	8	—	
11	62.3	61.3	61.7	25.8	29.8	25.8	32.6	22.0	20.5	24.3	21.5	83	78	87	NNE 1	E 4	NNE 1	2	4	8	9.5	
12	61.7	61.6	61.3	25.2	25.8	27.6	31.4	22.0	21.6	22.5	24.2	91	91	88	ENE 1	N 1	NE 1	3	8	8	10.0	
13	62.6	61.9	62.0	25.2	28.4	26.3	29.0	28.0	20.9	23.9	21.2	88	83	83	NNE 1	NNE 2	NNE 1	4	6	6	5.5	
14	62.0	61.8	62.0	25.8	25.8	24.3	30.0	23.0	22.5	21.5	22.1	91	87	95	NE 2	N 1	NE 1	4	8	6	1.5	
15	60.8	59.8	60.3	24.2	30.2	25.6	28.4	22.2	21.1	24.1	22.2	94	76	91	ENE 1	NE 2	NE 4	4	4	8	12.0	
16	61.7	61.0	60.6	25.8	31.3	26.6	31.1	23.4	21.7	23.4	22.2	88	69	85	ENE 1	E 1	NE 2	2	6	8	1.0	
17	61.7	61.3	60.3	26.0	27.6	26.8	31.4	23.0	22.9	21.3	21.8	92	78	83	ENE 1	ESE 1	NE 1	3	6	9	2.3	
18	62.0	61.5	61.2	23.5	28.0	24.4	29.2	21.9	20.8	23.1	21.5	96	82	95	ENE 1	N 1	ENE 1	8	8	10	1.8	
19	62.0	61.6	60.7	24.8	25.8	24.2	30.0	22.0	21.1	21.5	21.1	91	87	94	ENE 2	NNE 1	NE 2	2	8	10	13.0	
20	61.8	61.3	60.7	23.4	28.0	24.4	28.0	22.2	20.5	24.0	20.6	96	85	91	ENE 1	NNE 1	NE 2	6	7	10	18.5	
21	61.8	61.5	60.4	23.6	26.4	25.0	28.4	22.8	20.7	22.1	22.5	96	86	96	ENE 1	NE 1	NE 1	6	8	7	30.5	
22	61.7	61.1	60.5	25.0	29.0	26.6	29.0	21.8	22.5	24.2	24.0	96	81	93	ENE 1	NE 2	NE 2	7	8	9	12.5	
23	61.7	60.1	60.1	25.8	30.0	26.4	30.0	22.6	21.7	24.5	22.9	88	78	89	ENE 2	NE 1	NE 3	6	6	8	0.5	
24	61.7	60.2	60.4	25.2	29.4	26.2	30.2	23.2	21.6	23.3	22.6	91	76	90	ENE 1	NNE 2	ENE 2	3	6	10	—	
25	61.6	61.0	60.6	24.4	28.6	26.4	29.2	24.0	21.4	24.0	22.9	94	83	89	ENE 1	NE 2	NE 1	9	7	8	8.5	
26	62.0	61.1	61.5	24.2	29.4	26.2	29.0	23.0	21.1	24.1	23.8	94	79	94	ENE 1	NE 1	NE 2	7	8	8	2.2	
27	62.4	61.8	60.5	22.0	28.0	26.6	30.0	22.0	18.7	23.1	22.8	96	82	88	E 2	NNE 1	ENE 1	10	8	8	47.0	
28	61.7	61.1	60.5	24.2	30.0	26.4	28.2	22.0	21.5	24.5	22.5	96	78	88	ENE 2	NNE 2	ENE 1	8	6	9	0.5	
29	62.5	61.3	60.5	24.0	27.0	26.0	30.0	23.2	20.8	23.3	22.7	94	88	91	ENE 2	NE 2	NE 1	10	8	9	8.0	
30	61.7	61.2	60.5	25.2	28.6	25.4	27.2	22.8	21.6	24.2	22.3	91	83	93	ENE 2	NE 2	NE 2	6	8	8	3.5	
31	61.7	61.2	60.5	24.6	29.3	25.2	29.1	22.8	22.0	24.4	21.4	96	80	90	NE 1	NE 2	NE 2	6	4	7	2.25	
Som	1910.0	1891.9	1881.2	772.5	880.6	806.8	918.6	702.1	671.8	725.6	699.2	2829	2526	2773	39	49	45	160	212	259	237.2	
Gem.	61.6	61.3	60.7	24.3	28.4	26.0	29.6	22.5	21.7	23.4	22.6	91	81	89	1	2	1	5	7	8	7.7	

REGENVAL, uitgedrukt in m.M. in Suriname.

	"Cultuurtuin" te Paramaribo distr. Ben. Surin.	Pl. "Jagtlust" district Ben. Comm.	Plantage "Susanna's-daal" distr. Ben. Comm.	Pl. "Berlijn" district Ben. Comm.	Pl. "Alliance" district Cottica.	Pl. "Slootwijk" a d Connewijne distr. Bov. Comm.	Pl. "Slootwijk" a d Commetewane distr. Bov. Comm.	Pl. "Boxel" district Bov. Para.	"St. Domburg" district Bov. Para.	Pl. "Accaribo" district Bov. Suriname.	Pl. "Waterland" district Bov. Suriname.	"Berg en Dal" district Bov. Suriname.	"Lelydorp" district Ben. Para.	"Republiek" district Ben. Para.	"Settle O" district Ben. Para.	"Kwakoebron" district Bov. Saramacca	"Halte Gros" district Bov. Saramacca.	"Bronsweg" district Bov. Suriname.	"Kabelstation" district Bov. Suriname.	"Sikakamp" district Bov. Suriname.	"Dam" district Bov. Suriname.	Pl. "Caledonia" district Ben. Saramacca.	"Post Groningen" district Ben. Saramacca.	"Leasowes" district Coronie.	"Friendship" district Coronie.	"Hague" district Coronie.	"Nw. Nickerie" district Nickerie.	Placer "R' Awg" district Marowijne.
JAN. . .	21.5	21.5	18.6	12.5	22.6	16.0	17.0	28.5	35.5	5.0		41.5	—	18.9	26.3	24.1	48.0	39.0	44.7	7.0	4.7	18.0		31.0	27.3		38.0	92.5
FEB R. . .	6.2	—	5.3	11.5	5.7	14.0	9.0	0.2	0.5	3.0		1.5	5.0	8.1	2.9	11.0	10.0	—	6.1	8.0	4.7	3.0	8.8	20.5	11.0		7.0	49.0
MAART	67.8	62.0	43.8	67.5	67.3	42.0	40.2	44.0	55.0	34.9		27.5	80.5	86.6	86.0	129.7	40.0	38.0	85.6	71.0	70.3	14.5	30.6	33.0	32.0		10.5	133.5
APRIL .	126.5	77.2	114.6	100.5	119.5	160.0	162.5	124.5	104.0	102.5		189.0	126.5	158.1	206.0	134.0	206.5	202.0	145.0	217.0	189.6	76.0	117.9	92.0	128.7		92.5	178.0
MEI . . .	401.3	369.1	459.3	440.0	494.6	439.0	416.0	320.3	245.5	224.1		300.0	356.5	274.6	355.4	357.7	390.4	396.5	322.0	580.0	360.3	253.8	462.7	266.0	241.0		235.5	462.0
JUNI . .	325.4	324.7	284.9	347.0	408.9	301.0	328.5	244.6	265.5	242.9	174.2	325.0	326.5	345.6	356.6	379.8	294.9	325.0	222.5	267.0	278.6	341.5	335.5	154.0	233.7		288.5	345.0
JULI . . .	220.5	222.7	290.1	377.0	357.9	305.0	287.0	289.3	300.0	267.1	275.3	246.0	256.5	247.9	290.7	309.4	333.4	264.5	210.9	295.7	172.1	318.5	297.2	366.5	380.0		276.5	235.3
AUG. . .	270.1	291.3	254.3	215.0	217.8	330.0	310.0	186.1	212.0	216.9	242.9	175.0	184.5	206.4	125.3	196.5	81.1	114.8	112.0	97.2	56.9	225.5	263.3	84.0	77.3		67.0	112.0
SEPT. . .	20.2	31.2	51.6	40.5	35.8	90.5	78.5	65.6	77.0	18.7	57.0	61.0	89.5	48.8	28.7	93.8	34.1	62.0	34.9	106.9	117.7	91.6	71.7	40.5	35.0		72.0	70.0
OCT. . .	96.9	113.8	102.6	66.0	91.7	60.0	65.0	59.2	44.5	49.2	84.8	79.5	51.0	78.8	56.6	80.0	53.0	37.0	49.5	61.3	49.6	52.8	47.6	39.0	48.5	25.0	10.0	75.5
NOV. . .	169.4	199.1	134.4	146.5	118.5	141.5	133.0	113.9	137.7	156.6	150.7	62.5	100.5	95.5	98.1	97.6	64.0	101.6	127.9	88.7	92.5	94.0	163.4	87.5	153.5	194.0	103.0	76.5
DEC. . .	135.7	262.7	242.2	300.0	269.5	239.0	324.5	196.9	219.5	247.7	172.5	234.7	220.0	239.4	199.8	172.6	127.4	298.3	391.1	273.0	228.0	220.5	221.2	224.0	263.0	268.5	213.0	161.5
TOTAAL	1861.5	1975.3	2001.7	2124.0	2209.8	2138.0	2171.2	1673.1	1696.7	1568.6		1743.2	1797.0	1808.7	1832.4	1986.2	1682.8	1878.7	1752.2	2072.8	1625.0	1709.7	2019.9	1438.0	1631.0		1413.5	1990.8



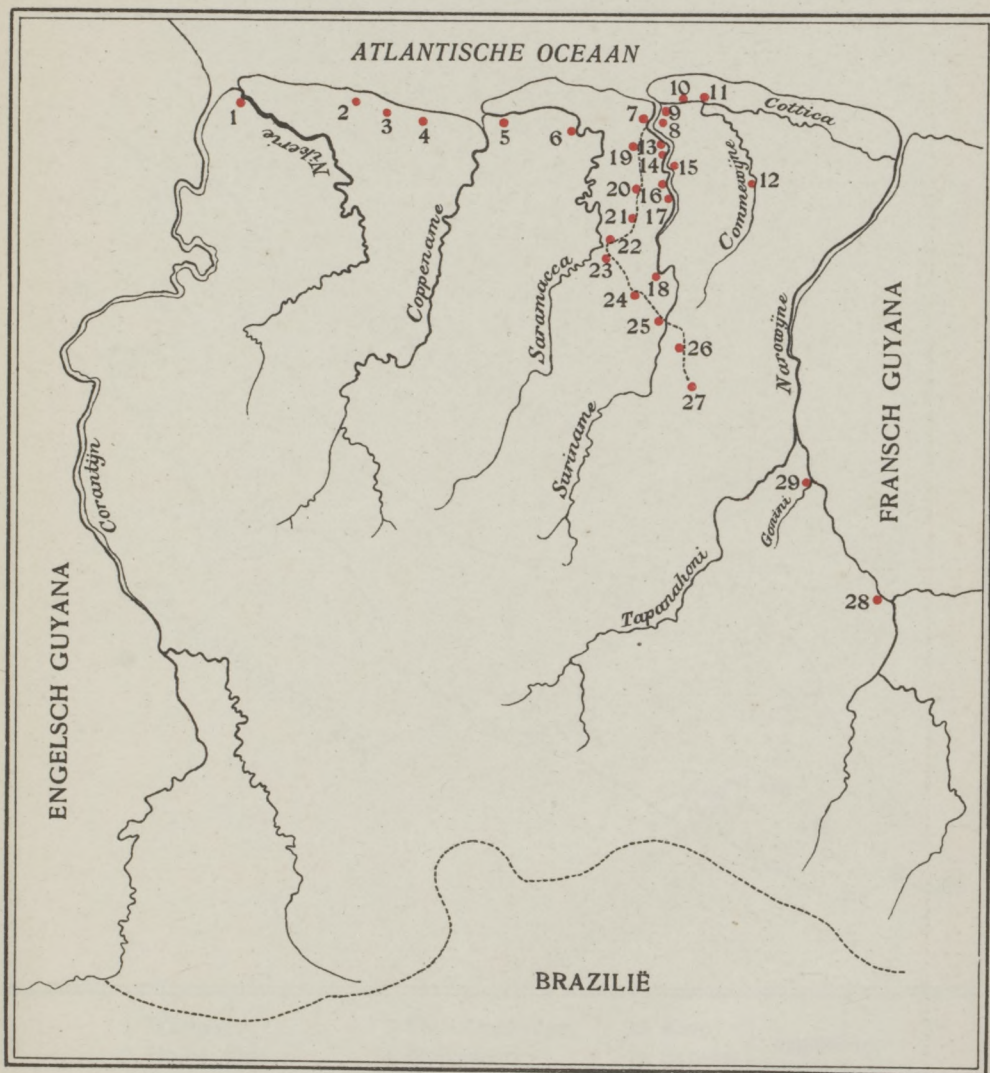
REGENVAL, uitgedrukt in m.M. op het eiland Curaçao.

	Fort „Amster- dam”.	Plantage „Klein St. Martha”.	Plantage „Siberië”.	Plantage „Caas Chikitoe”.	Plantage „Groot St. Joris”.	Plantage „Hoffie- aban”.	Plantage „Sta Rosa”.	Quaran- taine inrichting „Beeken- burg”.	Plantage „Noord- kant”.	Plantage „West- punt”.
JANUARI.....	9.3	12.7	5.0	7.5	8.0	7.5	12.0	12.8	4.0	5.1
FEBRUARI.....	1.4	7.2	1.3	—	—	13.5	—	—	4.0	2.0
MAART.....	2.1	7.6	7.6	2.5	5.0	11.1	3.0	2.1	—	1.8
APRIL.....	3.4	4.5	16.3	—	—	20.7	6.5	—	2.5	5.2
MEI.....	6.8	—	7.5	—	3.0	—	9.6	—	—	—
JUNI.....	4.5	—	3.0	—	4.0	—	4.7	—	2.5	2.0
JULI.....	25.3	34.4	12.1	21.0	35.0	22.7	35.2	24.8	28.0	19.8
AUGUSTUS.....	27.0	30.5	16.0	22.0	15.5	24.5	24.2	15.9	19.0	25.1
SEPTEMBER.....	17.5	44.0	35.0	27.0	25.5	69.3	28.0	4.6	18.5	36.1
OCTOBER.....	109.4	222.7	171.1	113.5	151.0	161.6	226.5	92.8		166.1
NOVEMBER.....	61.8	163.0	109.2	78.5	58.5	203.9	51.3	48.6	50.0	87.5
DECEMBER.....	94.2	108.9	75.1	131.0	80.5	109.5	87.5	85.5	87.5	106.9
TOTAAL.....	362.7	635.5	459.2	403.0	386.0	644.3	488.5	287.1	216.0	457.6

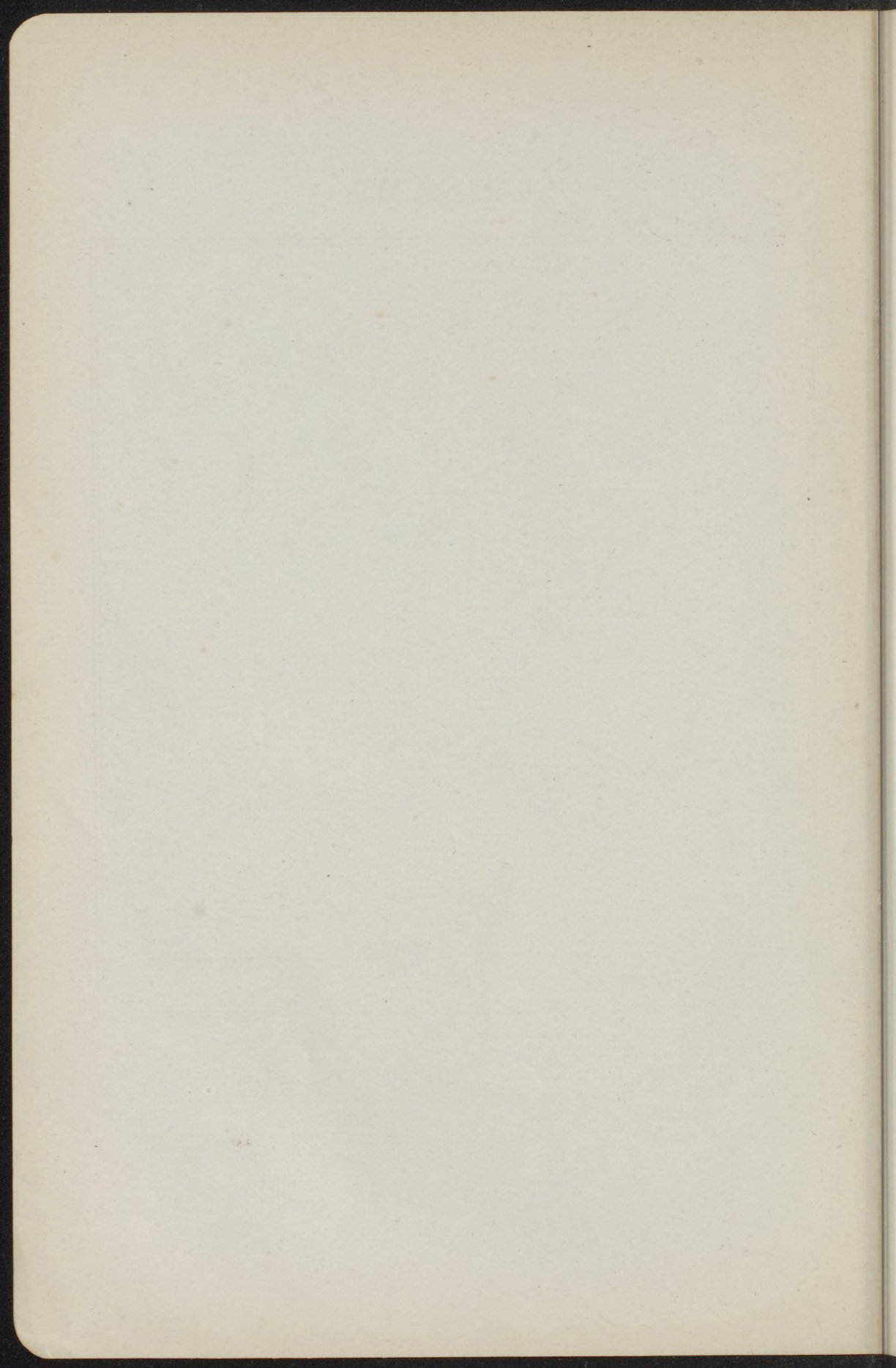
REGENVAL, uitgedrukt in m.M. op de overige Nederlandsche Antillen.

	BOVENWINDSCHE EILANDEN.								BENEDENWINDSCHE EILANDEN.		
	ST. MARTIN. PHILIPSBURG.	SABA.			ST. EUSTATIUS.				BONAIRE.		ARUBA.
		BOTTOM.	WINDWARD-SIDE.	ST. JOHN.	ORANJE-STAD.	BEN-GALEN.	ZEE-LANDIA.	THE FARM.	KRALENDIJK.	RINCON.	
JANUARI.....	47.1	72.5	60.9	69.5	54.8	98.0	49.7	52.6	3.0	—	2.5
FEBRUARI.....	14.6	61.8	52.5	49.5	29.8	21.1	23.6	41.2	—	0.5	—
MAART.....	41.2	42.7	32.6	35.0	37.1	21.4	31.9	42.8	2.8	7.0	—
APRIL.....	37.5	50.9	44.5	31.0	70.5	105.0	75.3	99.5	—	6.0	0.5
MEI.....	26.5	30.9	41.1	34.0	65.0	47.5	64.1	61.2	—	6.0	—
JUNI.....	83.4	33.7	31.4	29.5	82.2	50.0	60.5	80.6	—	1.2	1.0
JULI.....	53.0	63.9	51.6	56.0	103.1	150.0	112.3	113.9	61.5	45.3	25.5
AUGUSTUS.....	61.7	48.0	34.5	49.0	43.9	30.0	39.2	52.9	28.9	24.0	26.5
SEPTEMBER.....	47.3	104.0	51.4	63.0	85.8	82.0	107.5	99.8	6.1	1.0	26.0
OCTOBER.....	141.1	170.8	152.8	139.0	207.6	187.0	238.9	185.2	57.8	92.5	88.5
NOVEMBER.....	251.8	214.8	157.4	203.0	103.9	142.0	134.7	130.5	117.9	202.6	84.0
DECEMBER.....	66.1	62.9	51.4	66.0	75.7	32.7	80.2	85.0	72.5	54.1	77.0
TOTAAL....	871.3	956.9	762.1	824.5	959.4	966.7	1017.9	1045.2	350.5	440.2	331.5

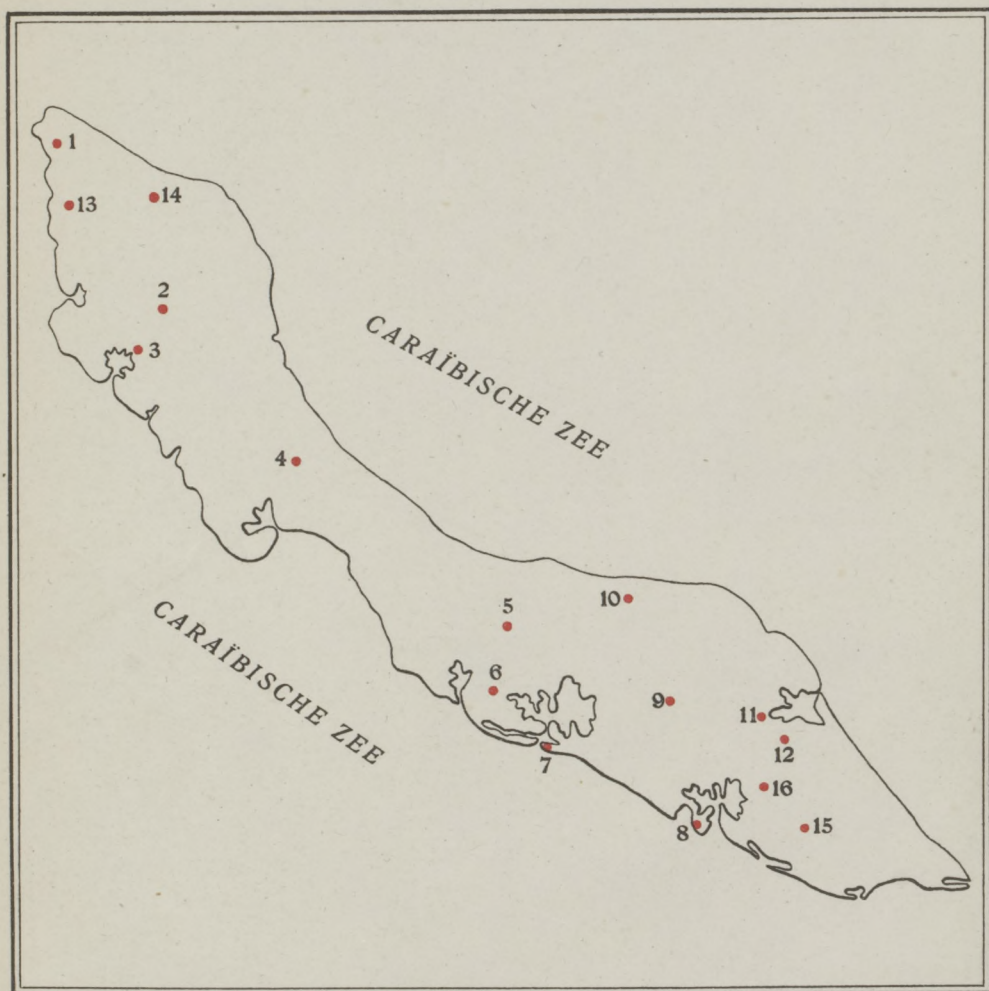
# SURINAME



- |              |                  |                |                  |
|--------------|------------------|----------------|------------------|
| 1 Nickerie   | 9 Sussannasdaal  | 16 Accaribo    | 23 Halte Gros    |
| 2 Leasowes   | 10 Berlijn       | 17 Waterland   | 24 Bronsweg      |
| 3 Friendship | 11 Alliance      | 18 Berg en Dal | 25 Kabelstation  |
| 4 Hague      | 12 Slootwijk     | 19 Lelydorp    | 26 Sikakamp      |
| 5 Caledonia  | 13 Boxel         | 20 Republiek   | 27 Dam           |
| 6 Groningen  | 14 Domburg       | 21 Sectie O    | 28 R'Awa         |
| 7 Paramaribo | 15 Gr. Chatillon | 22 Kwakoegron  | 29 Goninimonding |
| 8 Jagtlust   |                  |                |                  |



# CURAÇAO



- 1 Westpunt
- 2 Hoffie Abau
- 3 Klein St. Martha
- 4 Siberie
- 5 Santa Maria
- 6 Cas Chikito

- 7 Fort Amsterdam
- 8 Beekenburg
- 9 Santa Rosa
- 10 Noordkant
- 11 Groot St. Joris
- 12 Klein St. Joris

- 13 Knip
  - 14 Savonet
  - 15 Fuik
  - 16 Wilhelminatuin
- } opgeheven  
} regenstations

OLYMPIA



OLYMPIA  
WASHINGTON  
1892

